

Retail Space for Lease

624 Metropolitan Ave

Williamsburg, Brooklyn, NY

Location:

Entrance on Metropolitan Avenue

Retail Space:

Ground Floor: 986 SF

Frontage:

10 FT on Metropolitan Avenue

Ceiling Heights:

11 FT

Price:

Upon request

Highlights:

- Newly developed Retail Space available in a mixed-use building with luxury residences above
- Very Strong Foot Traffic
- Private Rear Yard
- Located 2 minutes walking distance from the Graham Avenue L-train & Metropolitan Ave G-train subway stops
- Landlord can deliver a custom build-out for Tenant



Local Attractions:



**SLOAN
REAL
ESTATE**

**Call/Text:
516 350 2621**

624 Metropolitan Ave

Ground Floor Photos

Williamsburg, Brooklyn, NY

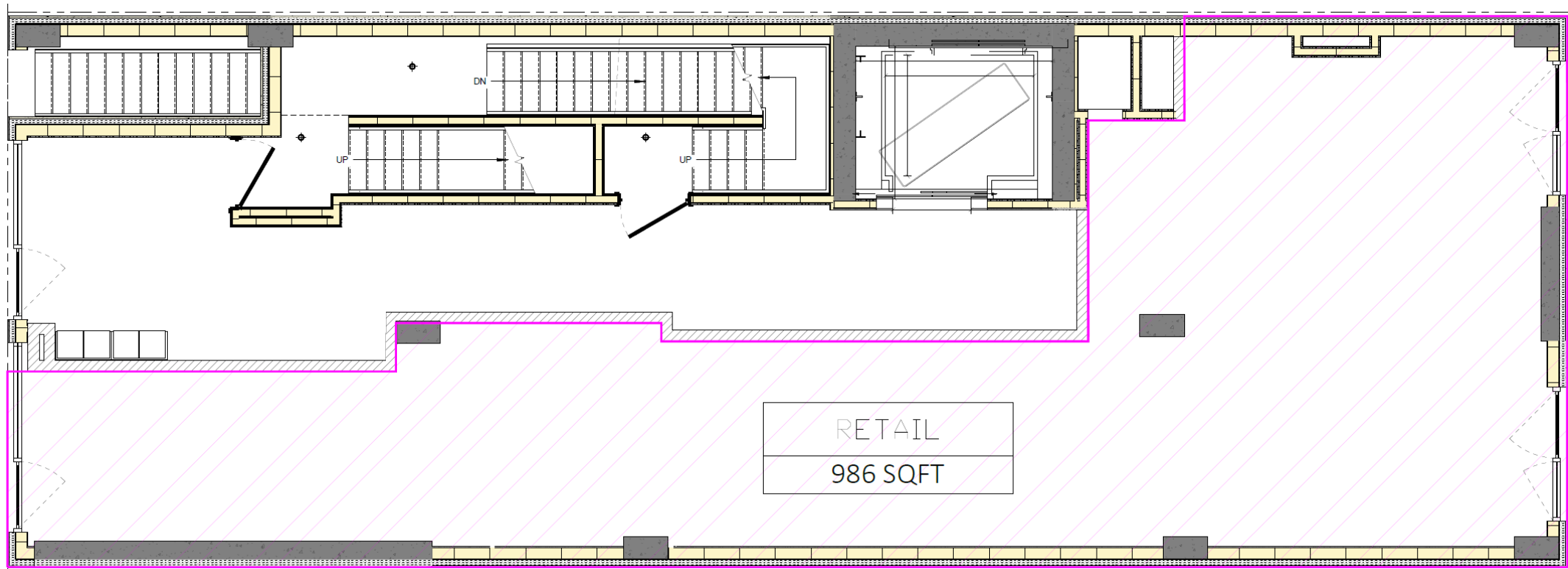


624 Metropolitan Ave

Ground Floor Retail Floorplan

Williamsburg, Brooklyn, NY

Metropolitan Avenue



CONTACT

JOSH SLOAN

516-350-2621

JS@SLOAN-RE.COM