

Saufley Station

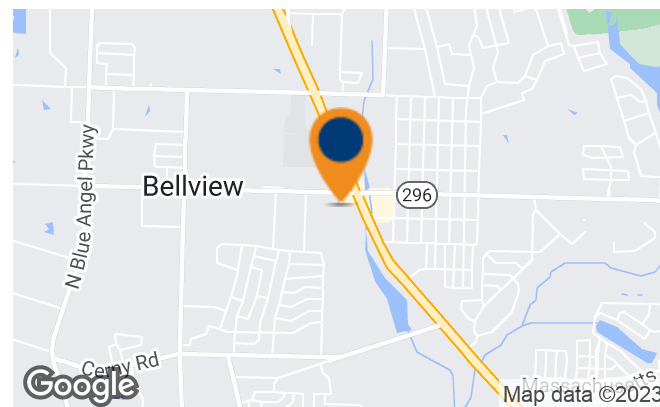
5975 Mobile Hwy
Pensacola, FL 32526



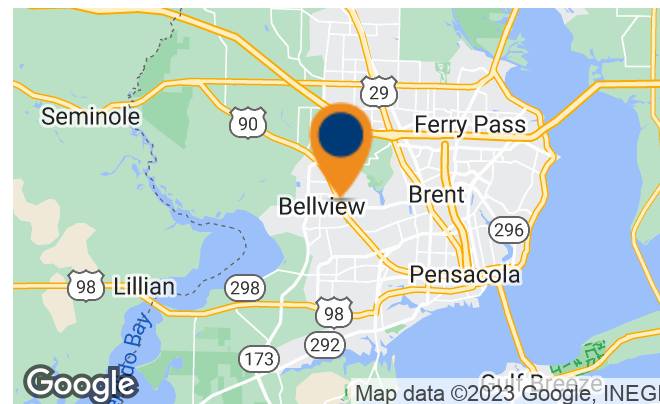
21,282 SF AVAILABLE

Property Highlights

- Anchor space available adjacent to a brand new Planet Fitness
- Terrific monument signage opportunities on two thoroughfares with traffic counts of 32,000 and 35,000 VPD
- In close proximity to Saufley Field U.S. Naval Base and Navy Federal Credit Union's new 6-story office, bringing 10,000 employees to the market daily.
- Multiple points of access including signaled intersections with ample parking.



Demographics	1 Mile	3 Miles	5 Miles
Total Households	2,791	20,497	44,907
Total Population	7,355	54,569	121,624
Average HH Income	\$53,759	\$50,170	\$47,584



Kim Moore

404.751.3355
kmoore@skylineseven.com

Josh Wulz

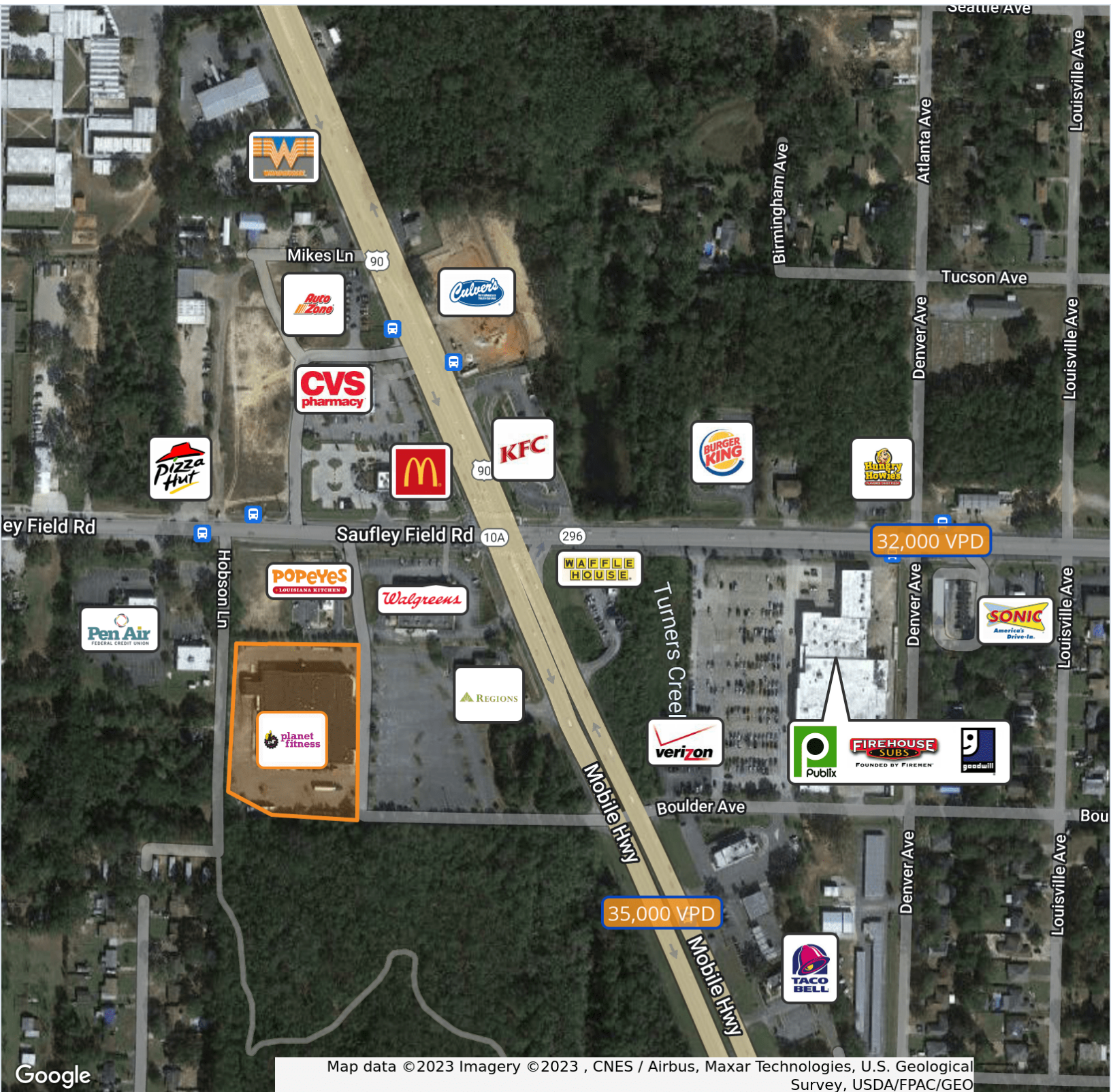
404.812.8922
jwulz@skylineseven.com

800 Mt. Vernon Highway NE, Suite 425, Atlanta, GA 30328 | skylineseven.com



Saufley Station

5975 Mobile Hwy
Pensacola, FL 32526



Kim Moore

404.751.3355
kmoore@skylineseven.com

Josh Wulz

404.812.8922
jwulz@skylineseven.com

800 Mt. Vernon Highway NE, Suite 425, Atlanta, GA 30328 | skylineseven.com

