

GENERAL NOTES

1. ALL FINISHES SHOWN TO COMPLY WITH THE 2009 IBC AND 2009 IRC.
2. ALL FINISHES SHALL BE PERFORMED BY THE TRADE CONTRACTOR.
3. ALL FINISHES SHALL BE PERFORMED IN ACCORDANCE WITH THE 2009 IBC AND 2009 IRC.
4. ALL FINISHES SHALL BE PERFORMED IN ACCORDANCE WITH THE 2009 IBC AND 2009 IRC.

DOOR SCHEDULE

1. COMPLY WITH THE 2009 IBC AND 2009 IRC.
2. COMPLY WITH THE 2009 IBC AND 2009 IRC.
3. COMPLY WITH THE 2009 IBC AND 2009 IRC.
4. COMPLY WITH THE 2009 IBC AND 2009 IRC.
5. COMPLY WITH THE 2009 IBC AND 2009 IRC.
6. COMPLY WITH THE 2009 IBC AND 2009 IRC.
7. COMPLY WITH THE 2009 IBC AND 2009 IRC.
8. COMPLY WITH THE 2009 IBC AND 2009 IRC.
9. COMPLY WITH THE 2009 IBC AND 2009 IRC.
10. COMPLY WITH THE 2009 IBC AND 2009 IRC.

WALL SCHEDULE

1. COMPLY WITH THE 2009 IBC AND 2009 IRC.
2. COMPLY WITH THE 2009 IBC AND 2009 IRC.
3. COMPLY WITH THE 2009 IBC AND 2009 IRC.
4. COMPLY WITH THE 2009 IBC AND 2009 IRC.
5. COMPLY WITH THE 2009 IBC AND 2009 IRC.
6. COMPLY WITH THE 2009 IBC AND 2009 IRC.
7. COMPLY WITH THE 2009 IBC AND 2009 IRC.
8. COMPLY WITH THE 2009 IBC AND 2009 IRC.
9. COMPLY WITH THE 2009 IBC AND 2009 IRC.
10. COMPLY WITH THE 2009 IBC AND 2009 IRC.

CEILING SCHEDULE

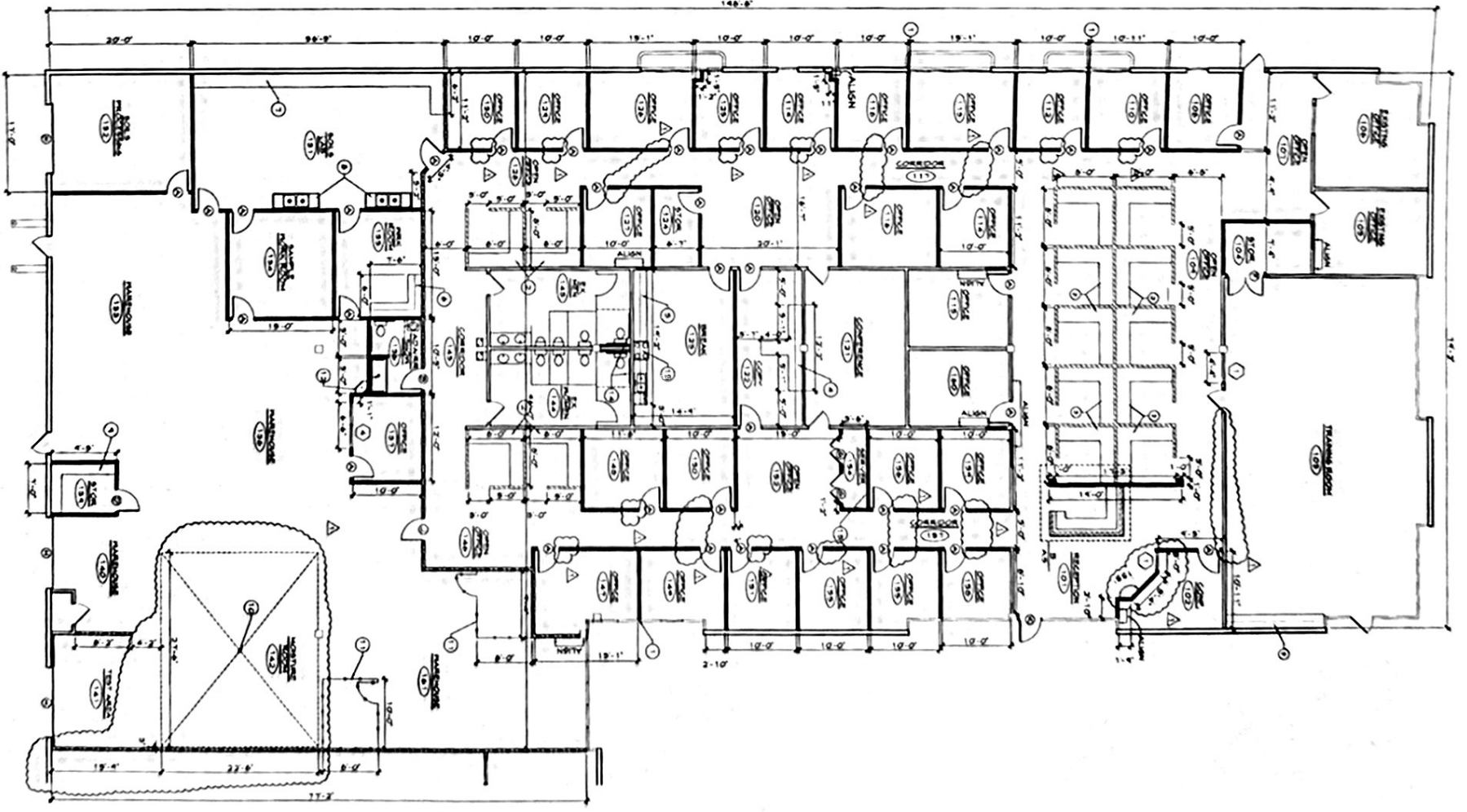
1. COMPLY WITH THE 2009 IBC AND 2009 IRC.
2. COMPLY WITH THE 2009 IBC AND 2009 IRC.
3. COMPLY WITH THE 2009 IBC AND 2009 IRC.
4. COMPLY WITH THE 2009 IBC AND 2009 IRC.
5. COMPLY WITH THE 2009 IBC AND 2009 IRC.
6. COMPLY WITH THE 2009 IBC AND 2009 IRC.
7. COMPLY WITH THE 2009 IBC AND 2009 IRC.
8. COMPLY WITH THE 2009 IBC AND 2009 IRC.
9. COMPLY WITH THE 2009 IBC AND 2009 IRC.
10. COMPLY WITH THE 2009 IBC AND 2009 IRC.

MECHANICAL SCHEDULE

1. COMPLY WITH THE 2009 IBC AND 2009 IRC.
2. COMPLY WITH THE 2009 IBC AND 2009 IRC.
3. COMPLY WITH THE 2009 IBC AND 2009 IRC.
4. COMPLY WITH THE 2009 IBC AND 2009 IRC.
5. COMPLY WITH THE 2009 IBC AND 2009 IRC.
6. COMPLY WITH THE 2009 IBC AND 2009 IRC.
7. COMPLY WITH THE 2009 IBC AND 2009 IRC.
8. COMPLY WITH THE 2009 IBC AND 2009 IRC.
9. COMPLY WITH THE 2009 IBC AND 2009 IRC.
10. COMPLY WITH THE 2009 IBC AND 2009 IRC.

ELECTRICAL SCHEDULE

1. COMPLY WITH THE 2009 IBC AND 2009 IRC.
2. COMPLY WITH THE 2009 IBC AND 2009 IRC.
3. COMPLY WITH THE 2009 IBC AND 2009 IRC.
4. COMPLY WITH THE 2009 IBC AND 2009 IRC.
5. COMPLY WITH THE 2009 IBC AND 2009 IRC.
6. COMPLY WITH THE 2009 IBC AND 2009 IRC.
7. COMPLY WITH THE 2009 IBC AND 2009 IRC.
8. COMPLY WITH THE 2009 IBC AND 2009 IRC.
9. COMPLY WITH THE 2009 IBC AND 2009 IRC.
10. COMPLY WITH THE 2009 IBC AND 2009 IRC.



Bradlow, Keith & Todd, Inc.
 Architectural/Interior Engineering
 918.744.4270
 918.744.7849
 200 South Ulaco Place, Suite 200
 Tulsa, Oklahoma 74114
 www.ktforchitects.com

TERRACON

MINGO TRADE CENTER
 9522 E. 47TH
 UNIT D

Levy Beffort



NO.	DATE	REVISION
1	11/12	ISSUE FOR PERMIT
2	11/12	ISSUE FOR PERMIT
3	11/12	ISSUE FOR PERMIT

A FLOOR PLAN
 SCALE: 1/8" = 1'-0"

ARCHITECTURAL FLOOR PLAN A.2

1-A-A
 1/8" = 1'-0"

EXHIBIT A

OUTLINE AND LOCATION OF PREMISES

This Exhibit is attached to and made a part of the Lease dated June 1, 2016 by and between Advanced Ultrasound Electronics, an Oklahoma corporation, ("Landlord") and Terracon Consultants, Inc., a Delaware corporation ("Tenant"). Current/accurate floor plan must be provided.

