



160 ELY STREET

INDUSTRIAL BUILDING FOR SALE

160 NE Ely Street, Fridley, MN 55432

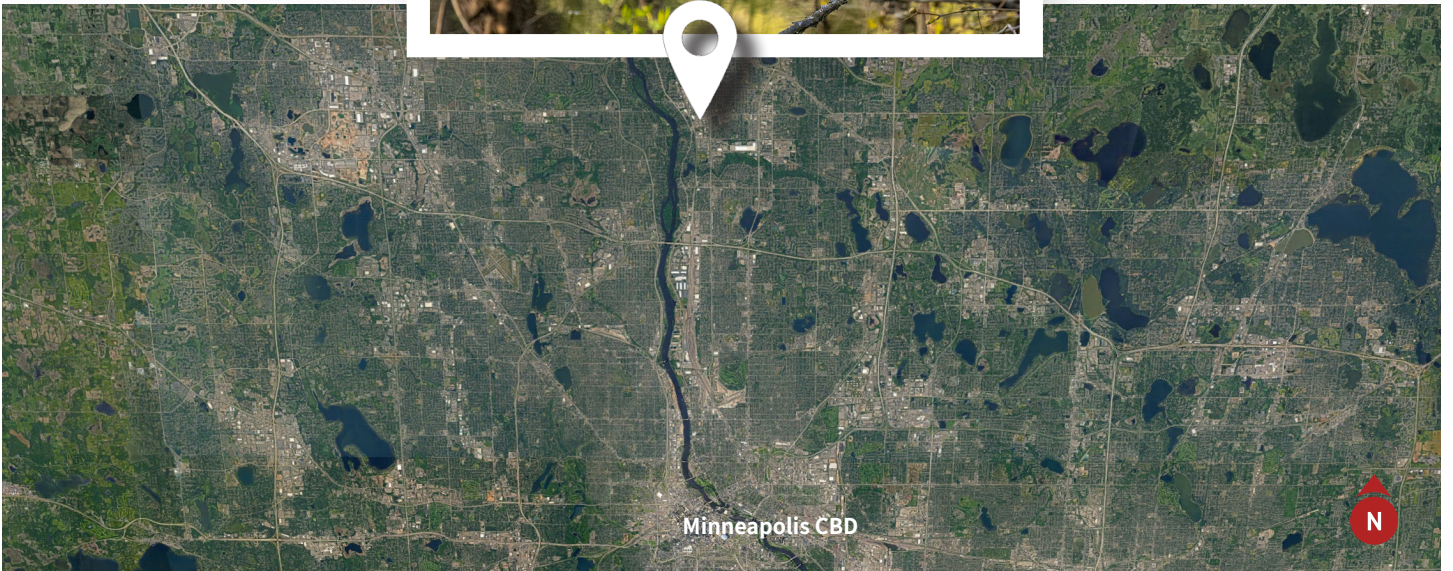
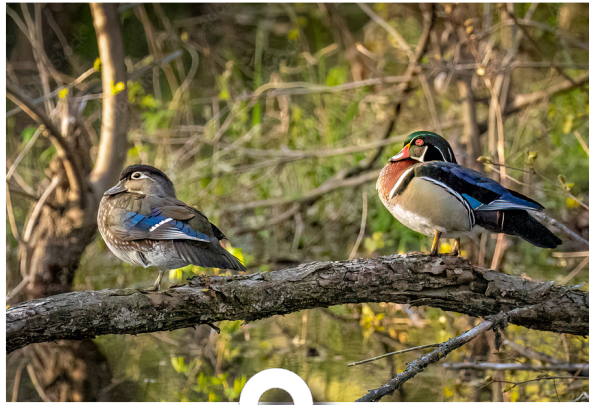
DETAILS

SITE SIZE	Building: 6,256 SF / Land: 17,279 SF/.40 acres
FLOORS	1
YEAR BUILT	1962
ZONING	M-1 Light Industrial District
PARKING	Surface Lot - approximately 9 vehicles
DRIVE-INS	One drive-in, approximately 8' wide by 10' high
CEILING HEIGHTS	Varying from 10' TO 12' 3"
SALE PRICE	\$700,000.00

AMENITIES

Located in Fridley, Minnesota, just off East River Road
Close to Trunk Highway 610 and MN Hwy 47
Building will be 100% Vacant Upon Sale
Close to Mississippi River, Fridley has a robust park system: Springbrook Nature Center, 39 neighborhood parks, three county parks, and two Regional Trails
Building has had the same owner for over 40 years
Property will require some maintenance/repairs
Additional land parcels available - see aerial view on page 3 of this brochure

The information contained in this Marketing Brochure has been obtained from sources we believe to be reliable; however, Kenwood Commercial has not verified, and will not verify, any of the information contained herein, nor has Kenwood Commercial conducted any investigation regarding these matters and makes no warranty or representation whatsoever regarding the accuracy or completeness of the information provided. All potential buyers must take appropriate measures to verify all of the information set forth herein.



Local Knowledge

Allows us to uncover unique opportunities for our clients in Minneapolis | St. Paul.



Independent Advantage

We provide personalized service and take the time to fully invest in our clients.



Full-Service

From start to finish: we're directly involved every step of the way.

CONTACT US

Mike Doyle

612.242.8820

mdoyle@kenwoodcommercial.com

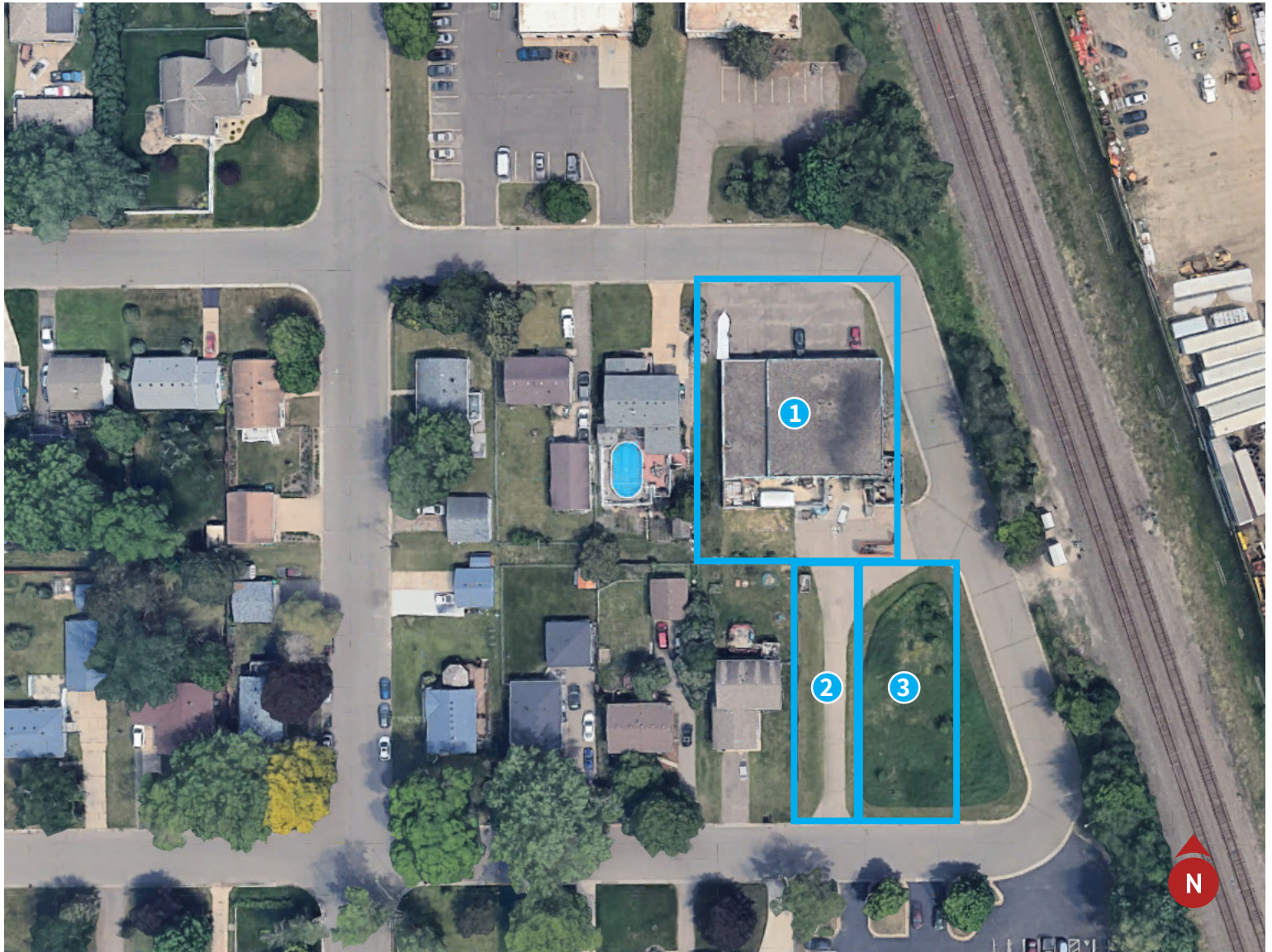
Holly Becker

651.666.8516

hbecker@kenwoodcommercial.com

AERIAL VIEW

Property Parcels



- ① Property ID 03-30-24-42-0126 - 160 NE Ely Street - .4 acre - Main Property
- ② Property ID 03-30-24-42-0100 - unassigned address - .1 acre
- ③ Property ID 03-30-24-42-0161 - unassigned address - .2 acre

FLOOR PLAN

6,256 RSF

