

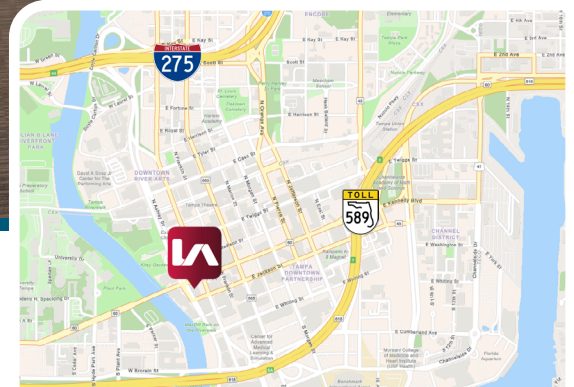
2,676 SF OFFICE SPACE FOR SUBLEASE

BANK OF AMERICA PLAZA

101 E. KENNEDY BLVD. SUITE 3140 TAMPA, FL 33602



CLICK OR SCAN TO
VIEW BUILDING
WEBSITE



SPACE OVERVIEW - FOR SUBLEASE

- AVAILABLE SF:** 2,676 SF
- EXPIRATION:** 2/31/2029
- AVAILABILITY:** Now
- LAYOUT:** 6 Private Offices, 1 Conference Room, 1 Breakroom
- PARKING:** 4 Unreserved Parking spaces
1 Reserved parking space
Dedicated parking garage
EV charging stations
- AMENITIES:** Fitness Center, ATM, Security Desk, Tenant Conference Room, Dining

Located within Tampa's CBD-2 zoning district, the property benefits from immediate access to the city's top amenities, including walkable dining, hospitality, and proximity to the Tampa Riverwalk.

The Bank of America Plaza is widely recognized as one of Tampa's premier office towers, offering a highly institutional environment with strong tenancy, professional management, and a central location that connects seamlessly to the greater Tampa Bay region.

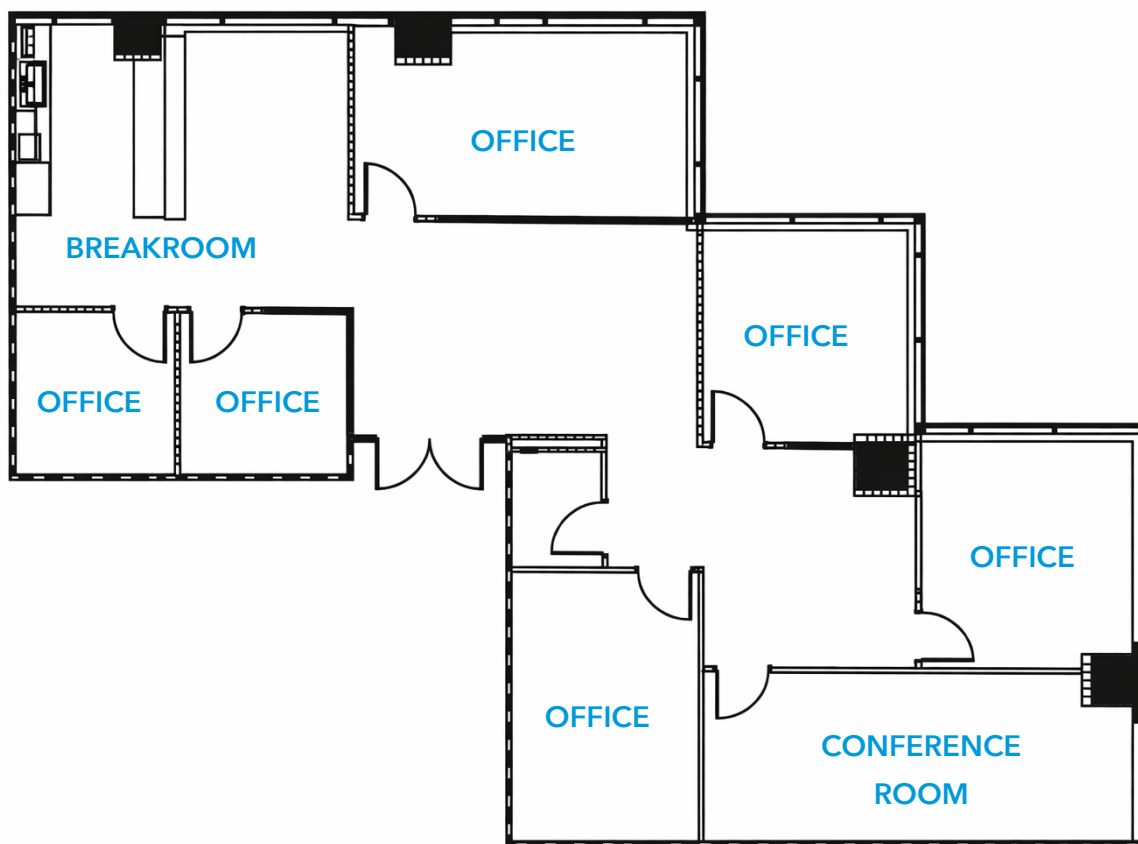
Cody Conti
cconti@lee-associates.com
D 727 698 7645

Kevin Hunt
kphunt@lee-associates.com
D 813 647 6001



2,676 SF OFFICE SPACE FOR SUBLEASE
BANK OF AMERICA PLAZA
101 E. KENNEDY BLVD. SUITE 3140 TAMPA, FL 33602

FLOOR PLAN - 2,676 SF



Cody Conti
cconti@lee-associates.com
D 727 698 7645

Kevin Hunt
kphunt@lee-associates.com
D 813 647 6001



2,676 SF OFFICE SPACE FOR SUBLEASE BANK OF AMERICA PLAZA 101 E. KENNEDY BLVD. SUITE 3140 TAMPA, FL 33602



Cody Conti
cconti@lee-associates.com
D 727 698 7645

Kevin Hunt
kphunt@lee-associates.com
D 813 647 6001

