

3500 Alameda

3500 ALAMEDA DE LAS PULGAS MENLO PARK, CA 94025



Offering Summary

Lease Rate:	Negotiable
Building Size:	9,080 SF
Available SF:	3,354 SF
Number of Units:	1
Year Built:	2002
Zoning:	C1-WMP

Property Overview

The front half of the building with strong visibility and presence onto Alameda de las Pulgas is in Class A condition and built-out with glass walled offices and conf rooms that can be removed for a more retail oriented user. The building is well parked and accessible from all directions. There are limited buildings in this sub-market that have this type of street presence and image for a top notch tenant.

Property Highlights:

- *High image building
- *Great street visibility
- *Good on-site parking
- *Must be "Ground Floor Dependent Use"
- *Main North-South arterial through Atherton-Menlo Park-Stanford

Brian Bokman

650.566.2200

bbokman@bokmanrock.com

David Rock

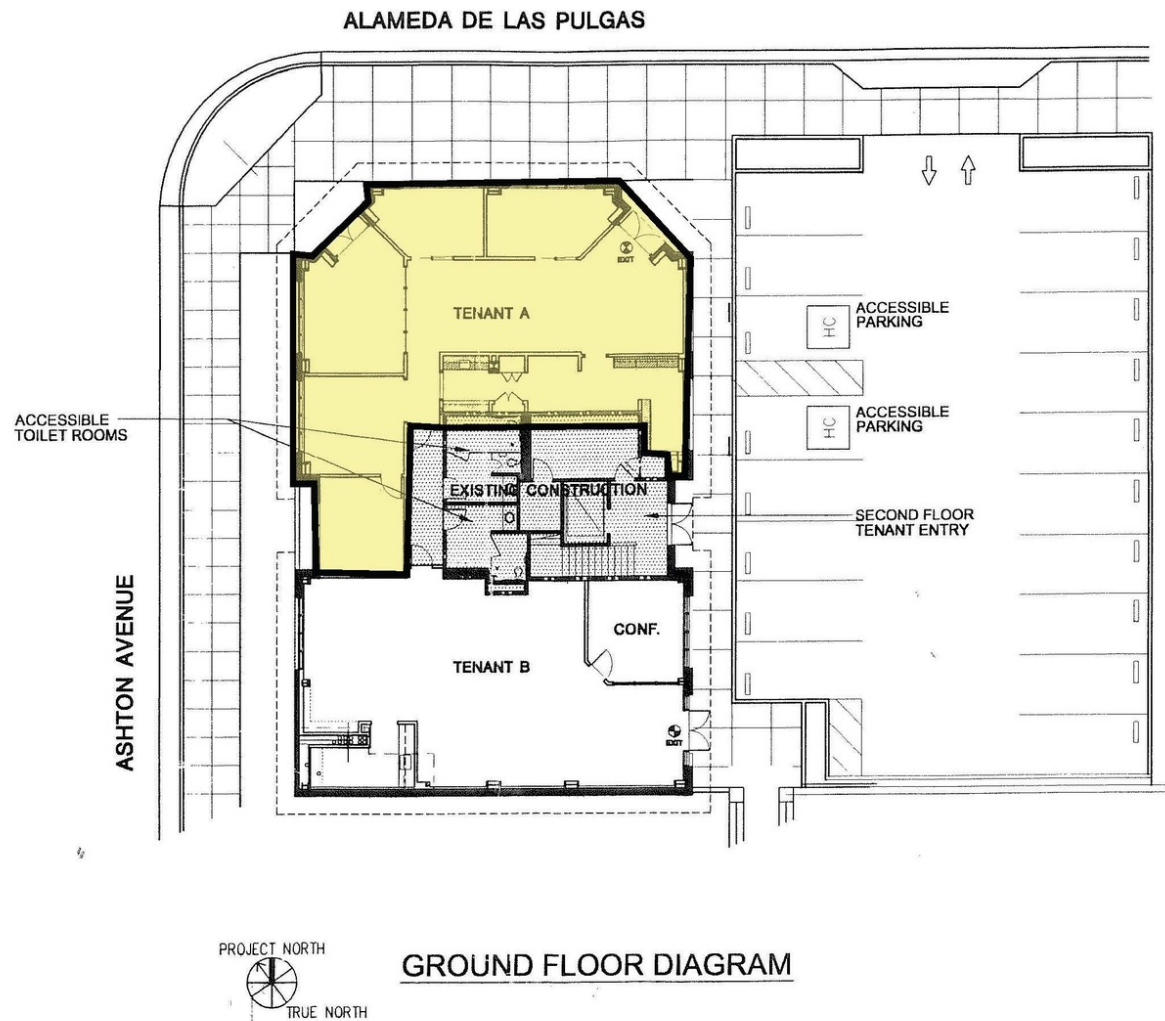
650.566.2202

drock@bokmanrock.com



3500 Alameda

3500 ALAMEDA DE LAS PULGAS MENLO PARK, CA 94025



Brian Bokman

650.566.2200

bbokman@bokmanrock.com

David Rock

650.566.2202

drock@bokmanrock.com



3500 Alameda

3500 ALAMEDA DE LAS PULGAS MENLO PARK, CA 94025



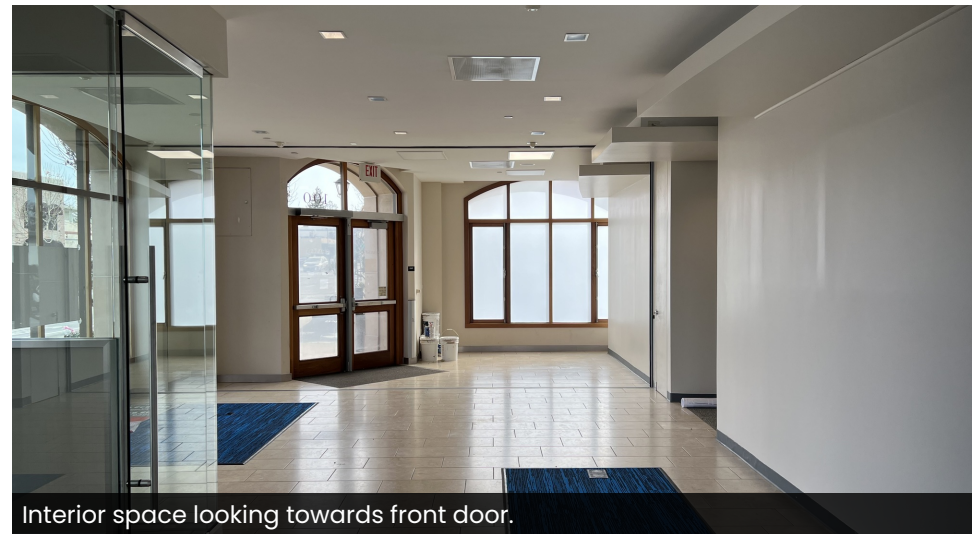
Building view with adjacent parking lot



Interior photo. Great windows and natural light.



Rear offices with glass walled offices.



Interior space looking towards front door.

Brian Bokman

650.566.2200

bbokman@bokmanrock.com

David Rock

650.566.2202

drock@bokmanrock.com



Bokman Rock
COMMERCIAL REAL ESTATE

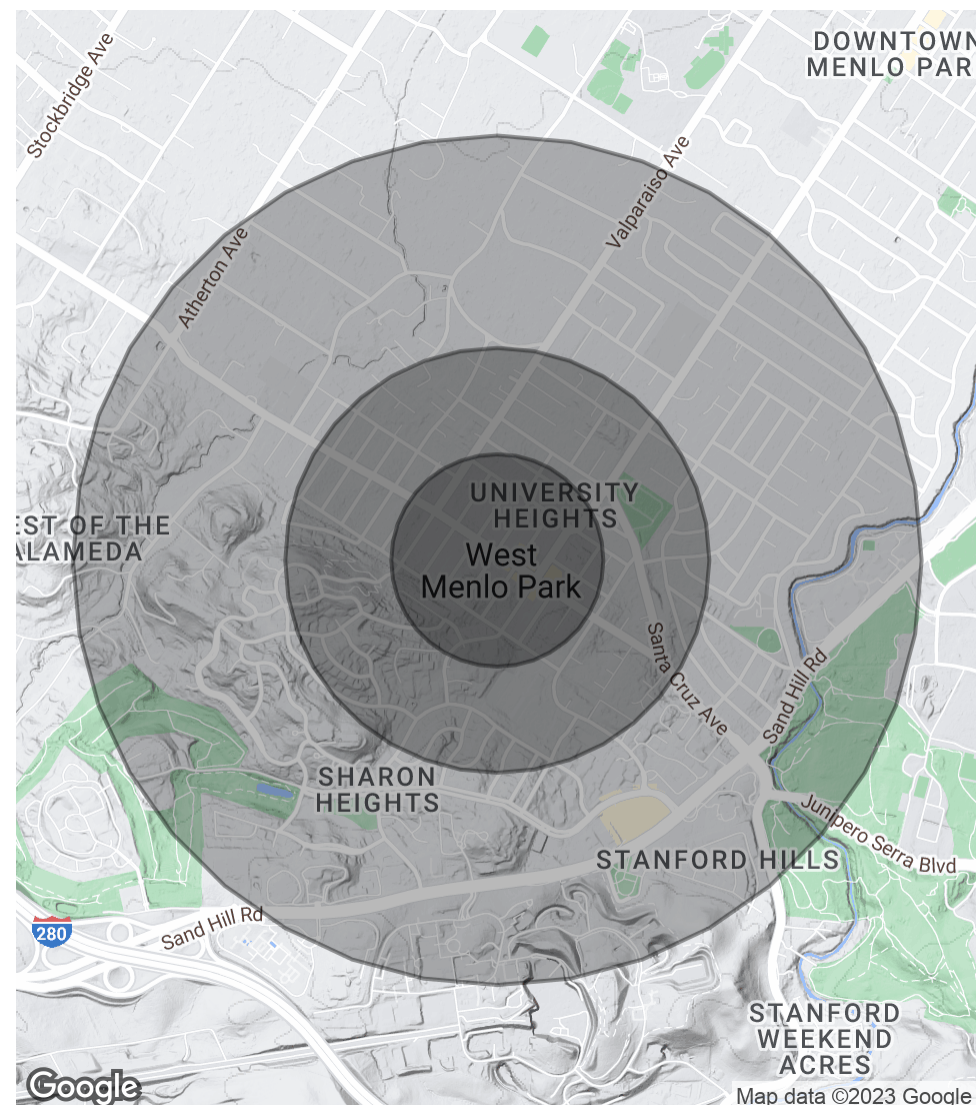
3500 Alameda

3500 ALAMEDA DE LAS PULGAS MENLO PARK, CA 94025

Population	0.25 Miles	0.5 Miles	1 Mile
Total Population	1,404	5,261	12,279
Average Age	42.1	40.4	41.4
Average Age (Male)	40.3	38.8	39.7
Average Age (Female)	43.1	41.8	43.4

Households & Income	0.25 Miles	0.5 Miles	1 Mile
Total Households	541	2,034	4,724
# of Persons per HH	2.6	2.6	2.6
Average HH Income	\$265,524	\$272,127	\$285,562
Average House Value	\$2,182,130	\$2,198,922	\$2,582,871

* Demographic data derived from 2020 ACS - US Census



Brian Bokman

650.566.2200

bbokman@bokmanrock.com

David Rock

650.566.2202

drock@bokmanrock.com

