

# OFFICE FOR LEASE

## 2638 PATRIOT BLVD.

### GLENVIEW, IL 60026

JAMESON.

RICK GARDELLA  
VICE PRESIDENT  
312.296.9669  
RGARDELLA@JAMESON.COM





# EXECUTIVE SUMMARY



## SPACE SIZE

1,500 SF

## YEAR BUILT

2005

## SPACE AVAILABLE

SUITE 200

## MARKET

GLENVIEW

## FOR LEASE

\$25.00/SF NNN

## PROPERTY HIGHLIGHTS:

WELCOME TO YOUR MOVE-IN READY OFFICE CONDO IN GLENVIEW, ILLINOIS, CONVENIENTLY SITUATED ACROSS FROM "THE GLEN" WITH RESTAURANTS, RETAIL, A MOVIE THEATRE, HOTELS, AND MEDICAL FACILITIES AT YOUR DOORSTEP. NESTLED IN AN AESTHETIC FOREST PRESERVE SETTING ON WEST HIGGINS ROAD NEAR BARRINGTON ROAD AND I-90, THIS RECENTLY RENOVATED SPACE BOASTS NATURAL LIGHT, MODERN OFFICE SPACE, A SPACIOUS CONFERENCE ROOM, AMPLE PARKING AND SUPERB LANDSCAPING. SEIZE THE OPPORTUNITY TO ESTABLISH YOUR BUSINESS IN THIS PRIME LOCATION, OFFERING BOTH TRANQUILITY AND CONNECTIVITY!

## AREA & TRANSPORTATION HIGHLIGHTS:

EASY ACCESS TO TO PUBLIC TRANSPORTATION WITH THE FOLLOWING TRANSIT STOPS NEARBY:

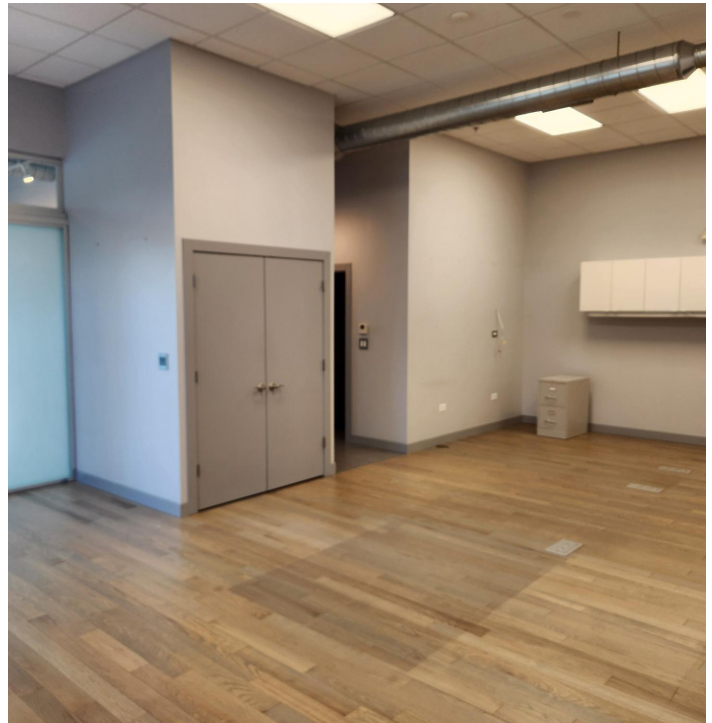
*NORTH GLENVIEW STATION (MILWAUKEE DISTRICT NORTH LINE - NORTHEAST ILLINOIS) - 4 MINUTE DRIVE*

*NORTHBROOK STATION (MILWAUKEE DISTRICT NORTH LINE - NORTHEAST ILLINOIS) - 6 MINUTE DRIVE*

JAMESON.

RICK GARDELLA  
VICE PRESIDENT  
312.296.9669  
RGARDELLA@JAMESON.COM

**INTERIOR PHOTOS**  
2638 PATRIOT BLVD.  
GLENVIEW, IL



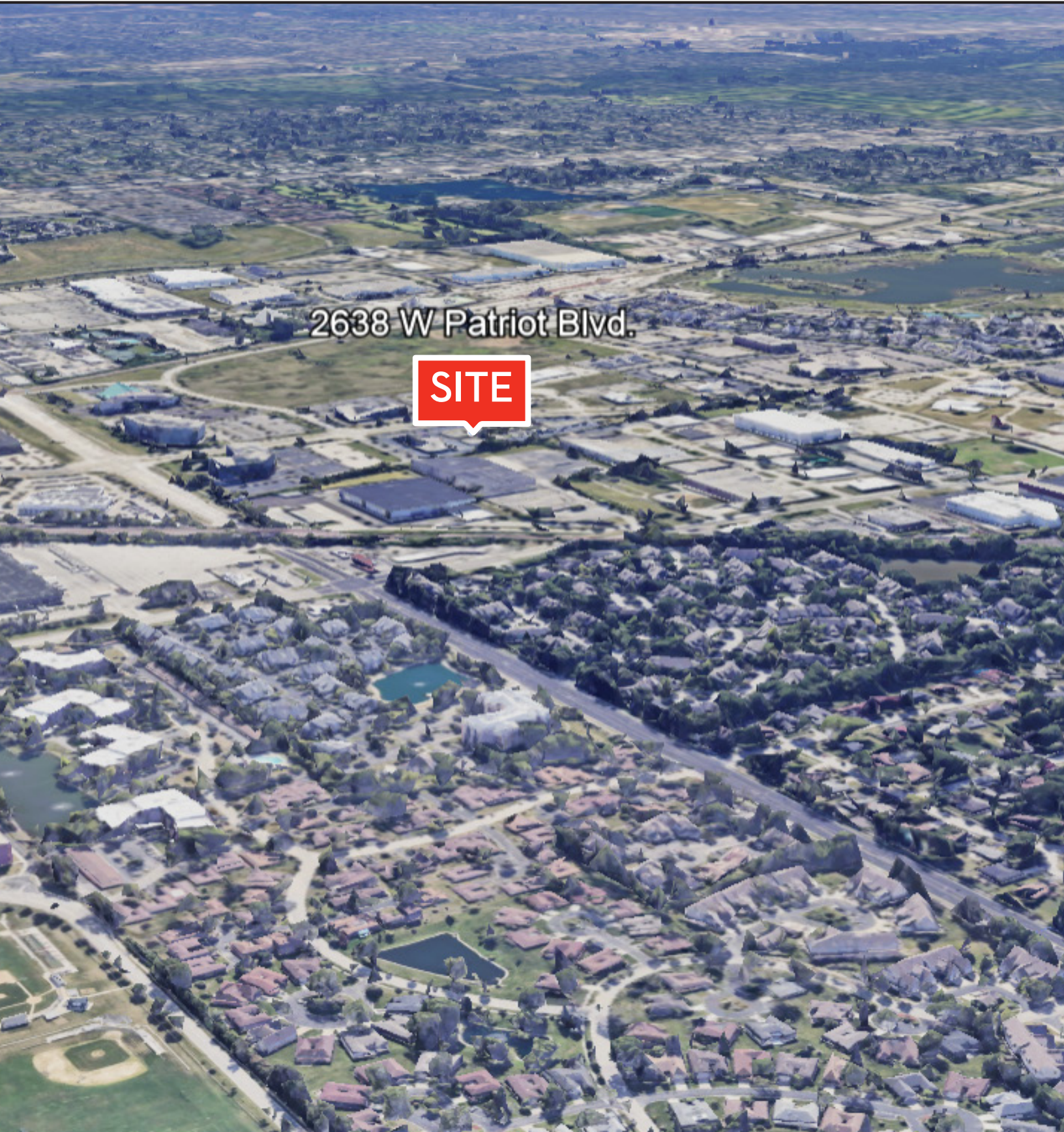
**RICK GARDELLA**  
VICE PRESIDENT  
312.296.9669  
RGARDELLA@JAMESON.COM



AERIAL MAP

2638 PATRIOT BLVD.

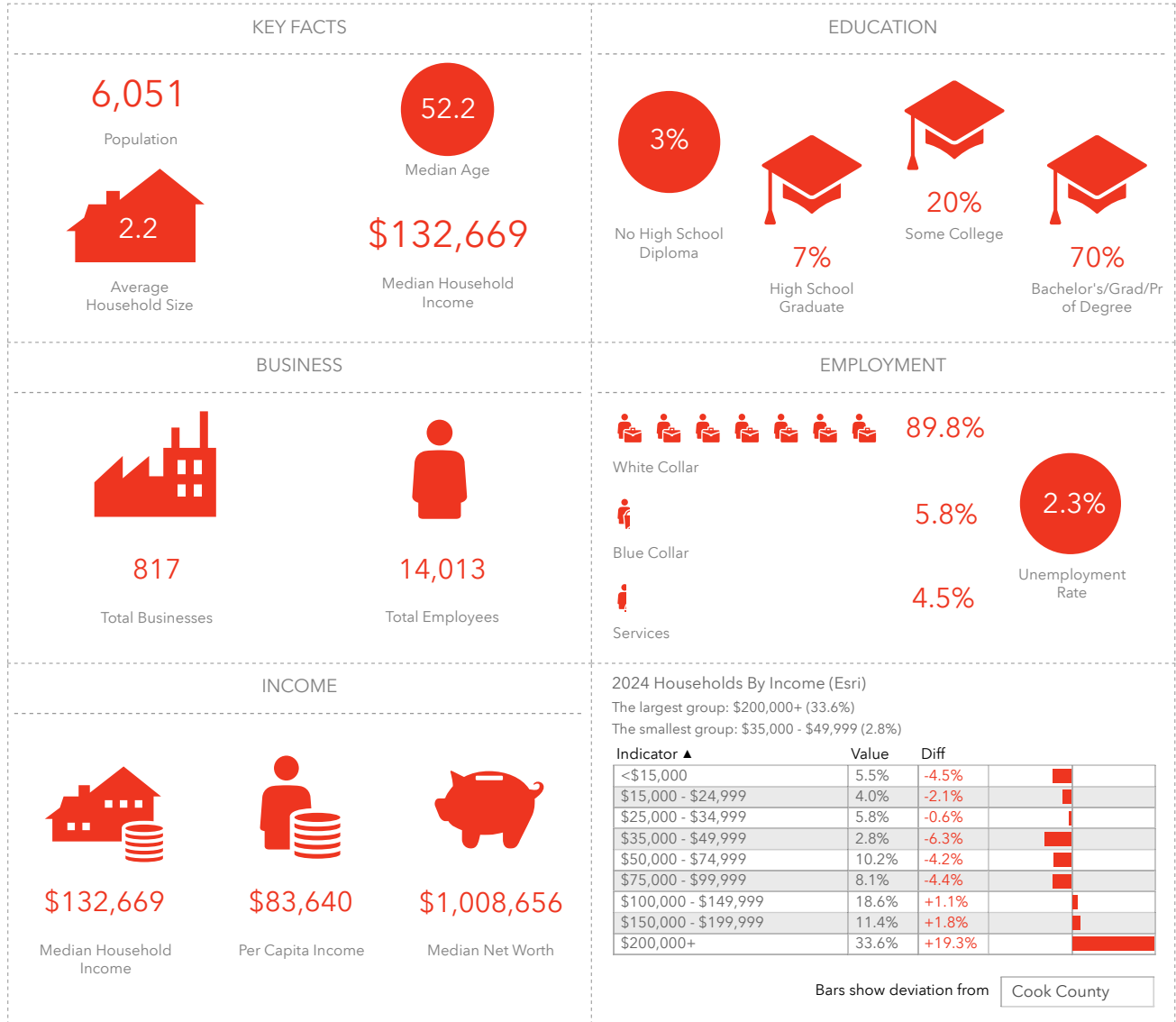
GLENVIEW, IL



# DEMOGRAPHIC INSIGHTS

2638 PATRIOT BLVD.

GLENVIEW, IL



This infographic contains data provided by Esri, Esri-Data Axle. The vintage of the data is 2024, 2029.

© 2024 Esri



**RICK GARDELLA**  
 VICE PRESIDENT  
 312.296.9669  
 RGARDELLA@JAMESON.COM



JAMESON.

**RICK GARDELLA**

VICE PRESIDENT

312.296.9669

[RGARDELLA@JAMESON.COM](mailto:RGARDELLA@JAMESON.COM)