



241 N Superior St

Toledo, Ohio 43604

Property Highlights

- Historic building with modern functionality
- Prominent location adjacent to the Huntington Center and Downtown Toledo's Entertainment District
- Ideal for office or commercial use
- 23,600 SF on 3 floors
- Zoned CD - Commercial Development District

Property Overview

This impressive 23,600 SF building, originally constructed in 1927, offers timeless architectural appeal with many updates. Zoned CD, the property could accommodate many different uses, providing excellent access to business and community amenities. Ideal for retail, office, or office building investors seeking a historic yet adaptable space, this property presents an exciting canvas for redevelopment or expansion. Perfect for a first-floor coffee shop and lounge. The second and third floors would be great for an accounting firm, attorney and financial advisors.

Offering Summary

Sale Price:	\$850,000
Lease Rate:	\$12.50 SF/yr (MG)
Building Size:	23,600 SF
Available SF:	23,600 SF

For More Information

Joshua D. Payzant

O: 419 960 4410 x323

jpayzant@naitoledo.com | OH #SAL.2016003142

Jason Westendorf, SIOR

O: 419 960 4410 x334

jwestendorf@naitoledo.com | OH #SAL.2006007466

Sale Price	\$850,000
Lease Rate	\$12.50 SF/Yr

Location Information

Street Address	241 N Superior St
City, State, Zip	Toledo, OH 43604
County	Lucas

Building Information

Building Size	23,600 SF
Building Class	C
Number of Floors	3
Year Built	1927
Year Last Renovated	2024
Number of Buildings	1

Property Information

Property Type	Office/Retail
Zoning	CD - Commercial Development District
Lot Size	4,568 SF
APN #	1215118

Parking & Transportation

Street Parking	Paid street and garage
----------------	------------------------

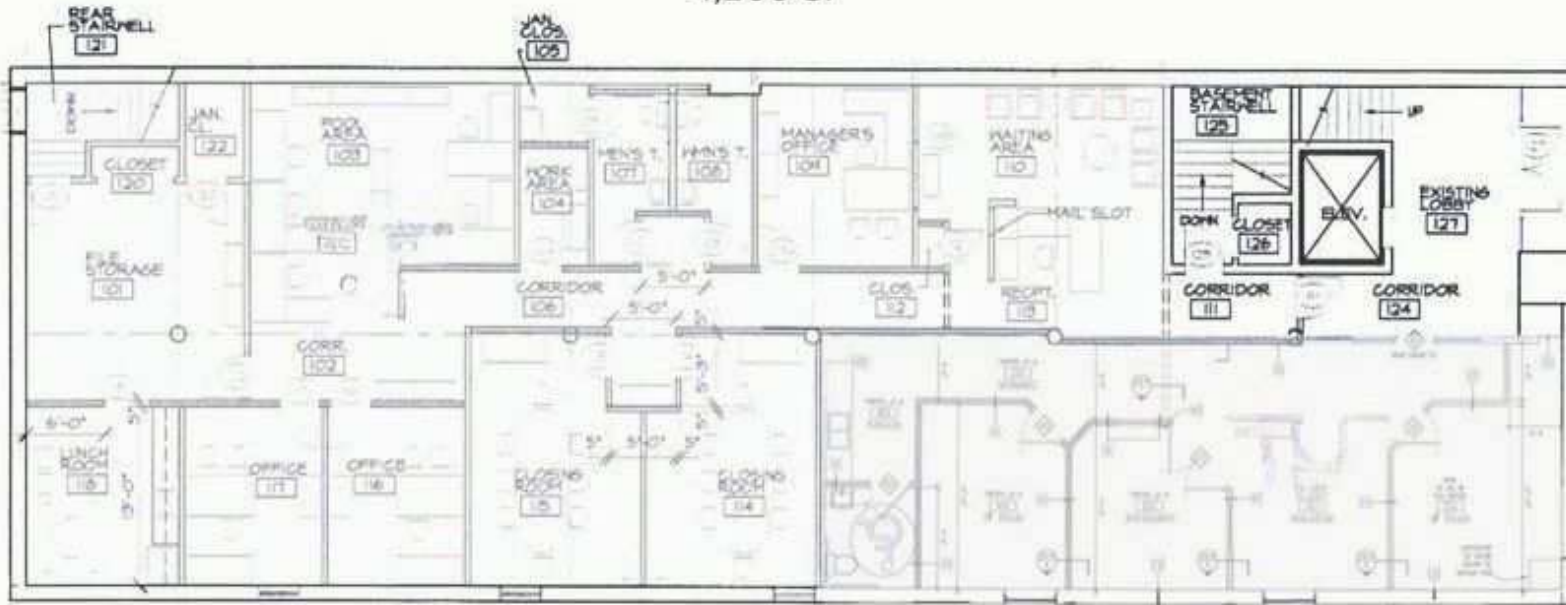
Utilities & Amenities

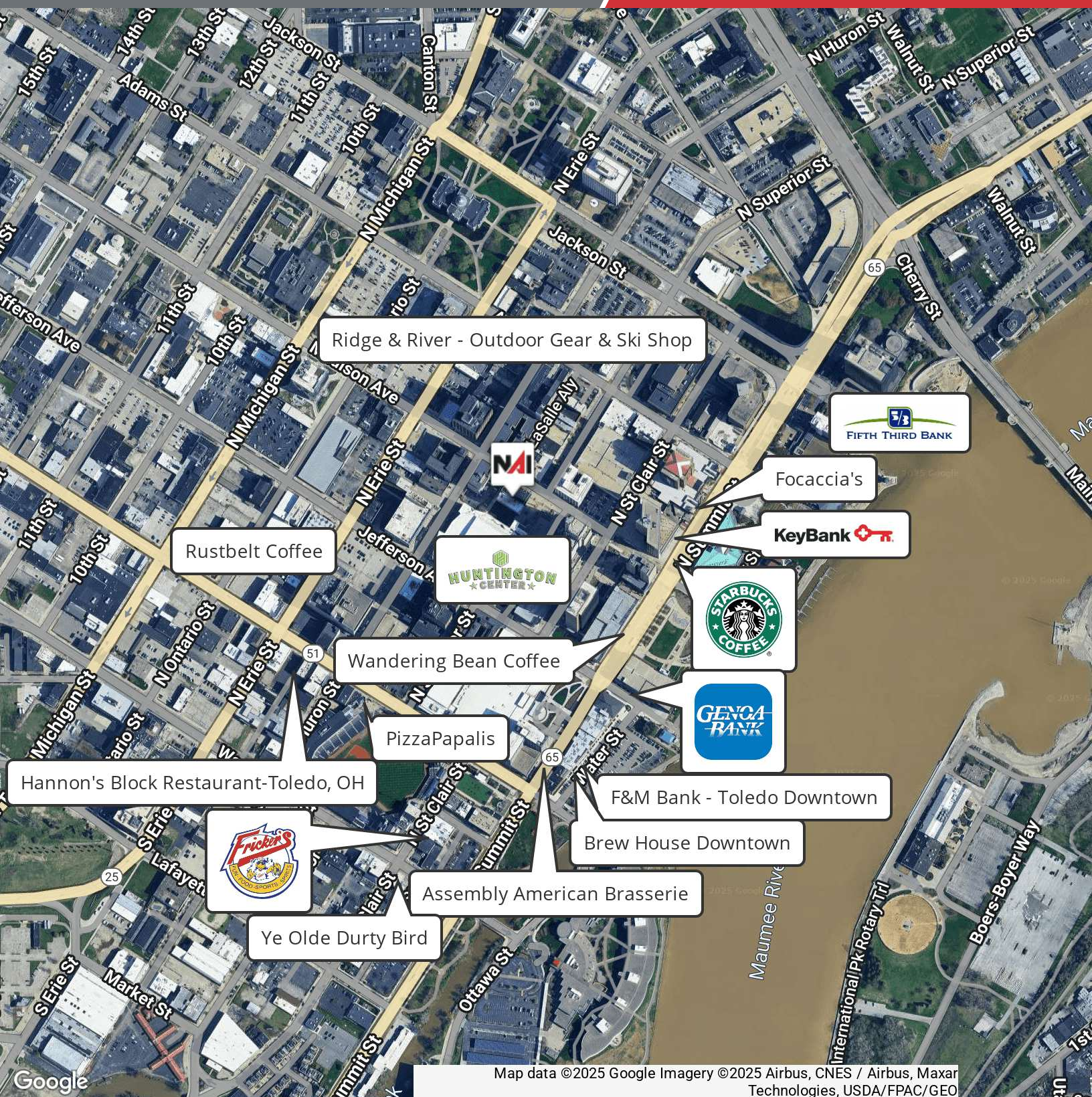
Handicap Access	Yes
Number of Elevators	1
Central HVAC	Yes





4,200 SF

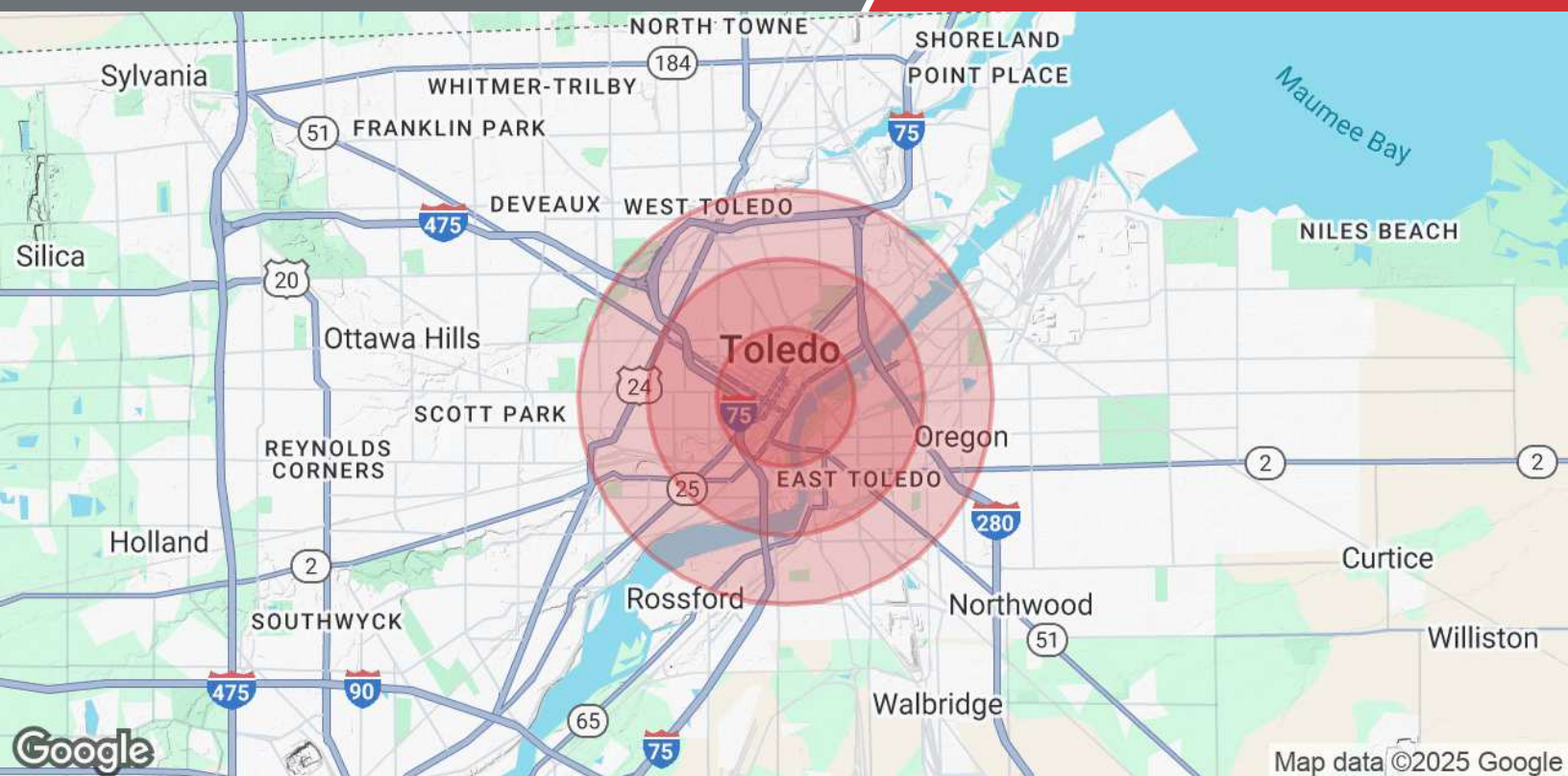




Map data ©2025 Google Imagery ©2025 Airbus, CNES / Airbus, Maxar Technologies, USDA/FPAC/GEO

NO WARRANTY OR REPRESENTATION, EXPRESS OR IMPLIED, IS MADE AS TO THE ACCURACY OF THE INFORMATION CONTAINED HEREIN, AND THE SAME IS SUBMITTED SUBJECT TO ERRORS, OMISSIONS, CHANGE OF PRICE, RENTAL OR OTHER CONDITIONS, PRIOR SALE, LEASE OR FINANCING, OR WITHDRAWAL WITHOUT NOTICE, AND OF ANY SPECIAL LISTING CONDITIONS IMPOSED BY OUR PRINCIPALS NO WARRANTIES OR REPRESENTATIONS ARE MADE AS TO THE CONDITION OF THE PROPERTY OF ANY HAZARDS CONTAINED THEREIN ARE TO BE IMPLIED.

4427 Talmadge Rd, Suite A
Toledo, OH 43623
419 960 4410 tel
naiharmon.com



Population	1 Mile	2 Miles	3 Miles
Total Population	9,402	42,765	84,526
Average Age	37	37	38
Average Age (Male)	36	37	37
Average Age (Female)	37	38	38
Households & Income	1 Mile	2 Miles	3 Miles
Total Households	4,612	18,467	35,590
# of Persons per HH	2	2.3	2.4
Average HH Income	\$32,864	\$40,347	\$47,441
Average House Value	\$106,524	\$87,046	\$95,113

Demographics data derived from AlphaMap