



Brady Sullivan Properties
 670 N. Commercial Street
 Manchester, nh 03101
 603.622.6223



Owner
**BRADY SULLIVAN
 PROPERTIES**

Project
1230 ELM STREET
 MANCHESTER NH

SUITE 100
1,370 USF

Seals

Issues	Date	Description

Revisions	No.	Date	Description

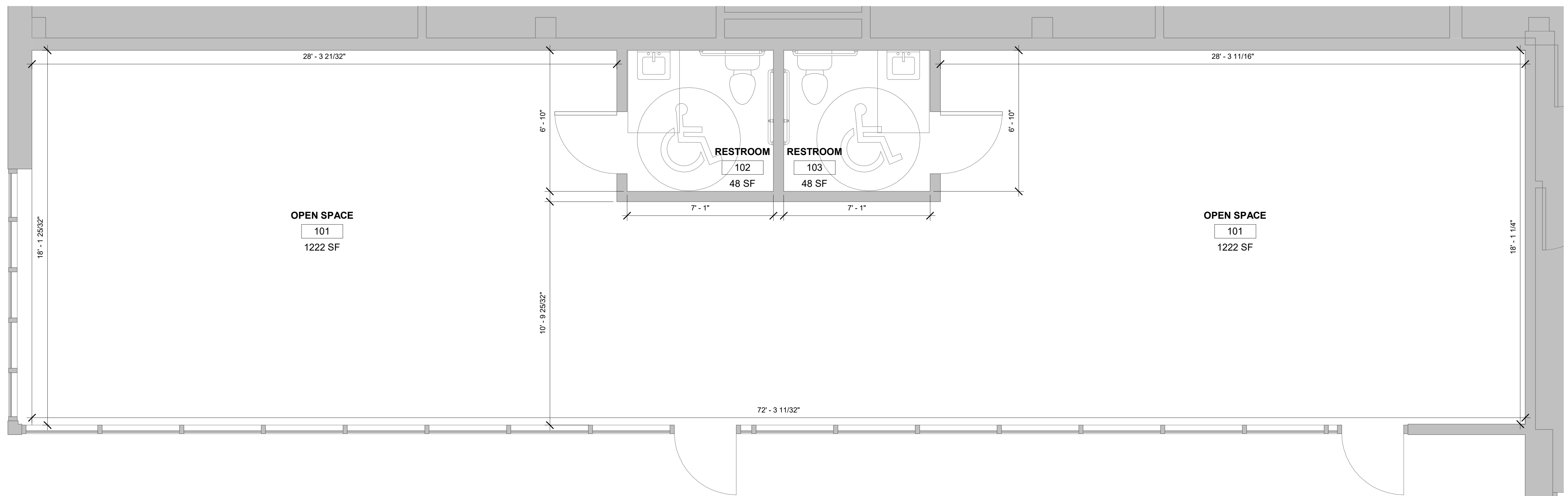
Drawing Title
EXISTING PLAN

Issue Date:	11-03-2023
Project No: Project Number	Scale: As Indicated
Project Manager:	Production Leader:
Project Architect:	Peer Reviewer:

Drawing Number
A101

LEGEND

	NOT IN SCOPE		PROPOSED ITEMS (HEAVY LINE WEIGHT)
	EXISTING ITEMS		EXISTING DOOR AND FRAME TO REMAIN
	NEW DOOR AND FRAME		DEMO ITEMS



① EXISTING SOUTH SUITE
 3/8" = 1'-0"

11/3/2023 2:15:55 PM