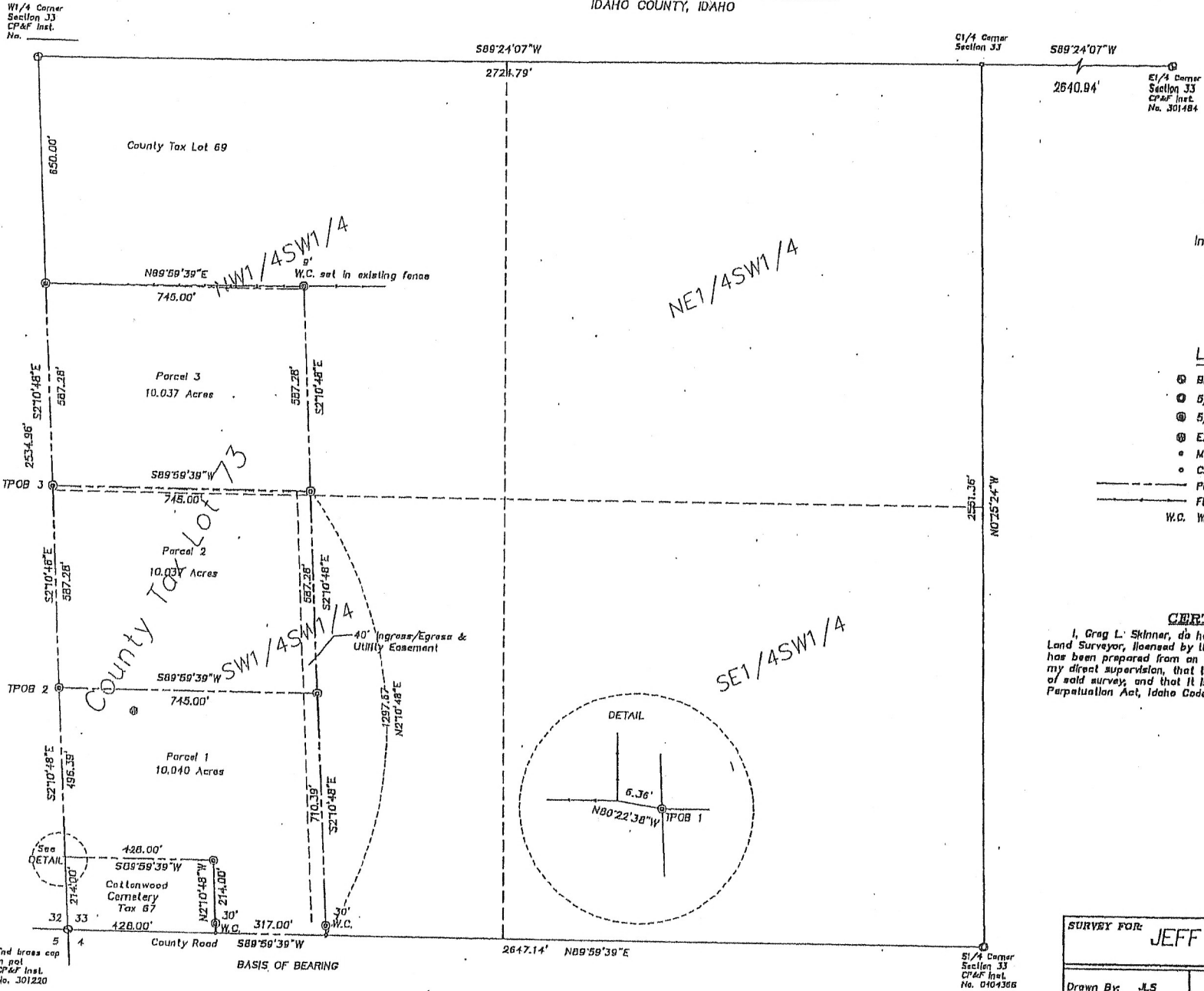


RECORD OF SURVEY

A PORTION OF THE SW1/4 SW1/4 AND THE NW1/4 NW1/4 OF SECTION 33,
TOWNSHIP 32 NORTH, RANGE 1 EAST, BOISE MERIDIAN
IDAHO COUNTY, IDAHO

A.S.
J.S.

EXHIBIT B



Reference Survey:
Inst. No. 428170 (S-2020)

SCALE: 1" = 200'

LEGEND

- ⊙ BRASS CAP MONUMENT - FOUND
- ⊙ 5/8" REBAR W/ALUMINUM CAP - FC
- ⊙ 5/8" x 30" REBAR - SET
- ⊙ EXISTING WELL
- MAG NAIL & ALUMINUM WASHER - S
- CALCULATED POINT
- PROPERTY BOUNDARY LINE
- FENCE LINE
- W.C. WITNESS CORNER

CERTIFICATION

I, Greg L. Skinner, do hereby certify that I am a Professional Land Surveyor, licensed by the State of Idaho, and that this map has been prepared from an actual survey made on the ground in my direct supervision, that this map is an accurate representation of said survey, and that it is in conformity with the Corner Perpetuation Act, Idaho Code 55-1801 through 55-1812.



SURVEY FOR: **JEFF SEUBERT**

Drawn By: JLS

Date: Feb. 12, 2009

Surveyed By: GLS

**Skinner Land
Survey Co. Inc**

312 W Fourth Street
Grangerville, Idaho 83409
(208) 303-3217

Find brass cap in pot CP&F Inst. No. 301220

SE1/4 Corner Section 33 CP&F Inst. No. 0104365

BASIS OF BEARING