

EASTON WAY ONE

4449 Easton Way, Columbus, OH 43219



PROPERTY DETAILS

Up to 8,349 SF Contiguous **\$15.85 SF Net**

- Four-story office building located on the southwest corner of Easton Way and Stelzer Road.
- 110,614 rentable SF
- 27,654 SF average floor plate
- Parking ratio of 4 spaces per 1,000 SF
- Features a single story lobby with 12' high ceilings, granite tile flooring and wood accents
- Dining, shopping, lodging, banking and other amenities at Easton Town Center and elsewhere around the expansive region
- Easy access to John Glenn Airport and I-270

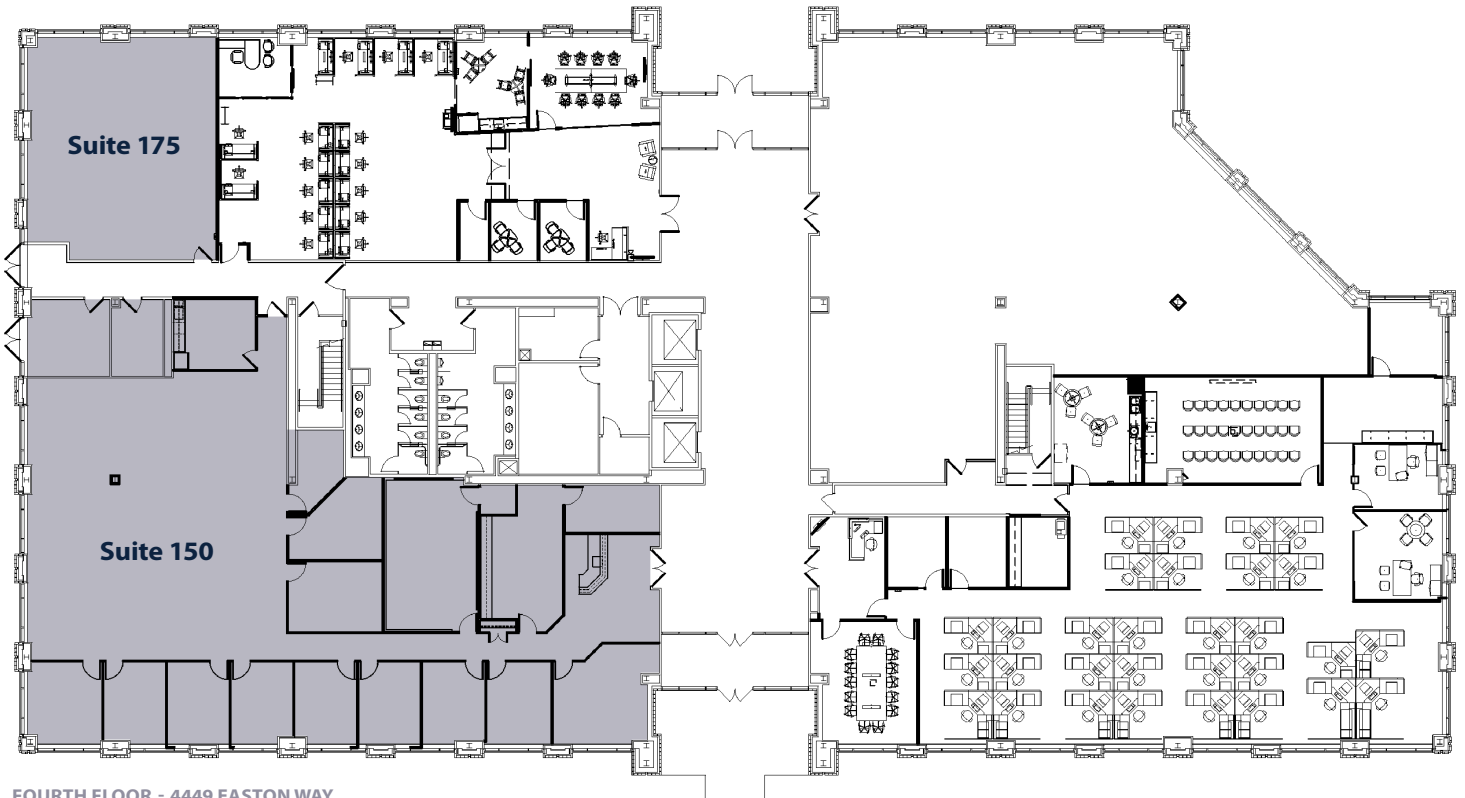
FOR MORE INFORMATION CONTACT

Mike Whitman | (614) 783-7202



EASTON WAY ONE

4449 Easton Way, Columbus, OH 43219



FOURTH FLOOR - 4449 EASTON WAY

Suite 150 - 6,919 SF

Suite 175 - 1,430 SF

Total Available 8,349 SF

PROPERTY DETAILS

- Excellent infrastructure to I-270 through two interchanges, Easton Way and Morse Road
- Less than five-minute commute to John Glenn International Airport
- Retail at Easton Town Center includes more than 24 restaurants, 35 movie screens, Nordstrom and Macy's



FOR MORE INFORMATION CONTACT

Mike Whitman | (614) 783-7202



THE GEORGETOWN COMPANY