

FOR LEASE

1081 WESTWOOD BLVD, LOS ANGELES



OFFICE SUITES FOR LEASE

Historic Westwood Dome building

Landmark building with exquisite architecture

Very well maintained

High arched ceilings with dramatic molding throughout

Tremendous visibility in the heart of Westwood Village

Westwood Boulevard secured access

Adjacent to city parking structure on Broxton

Suite has operable windows

Ideal psychotherapy/psychologist/attorney suite

SUZANNE LAFF

424.653.1853 | suzanne.laff@kidder.com

LIC N° 01058946

KIDDER.COM

This information supplied herein is from sources we deem reliable. It is provided without any representation, warranty, or guarantee, expressed or implied as to its accuracy. Prospective Buyer or Tenant should conduct an independent investigation and verification of all matters deemed to be material, including, but not limited to, statements of income and expenses. Consult your attorney, accountant, or other professional advisor.





Charming small offices in well maintained Westwood Village's iconic building. 2nd Floor offices.

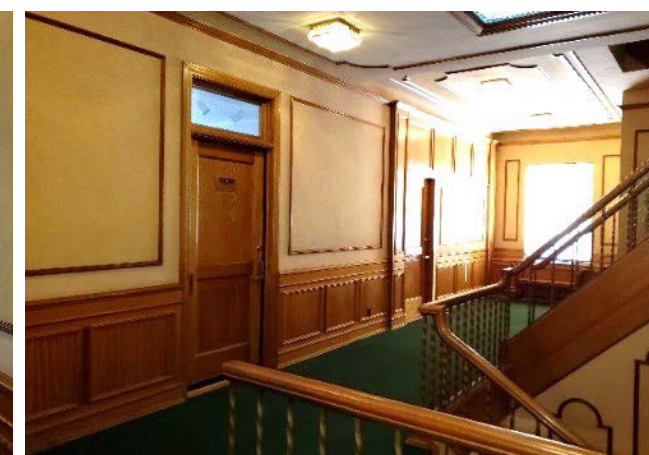
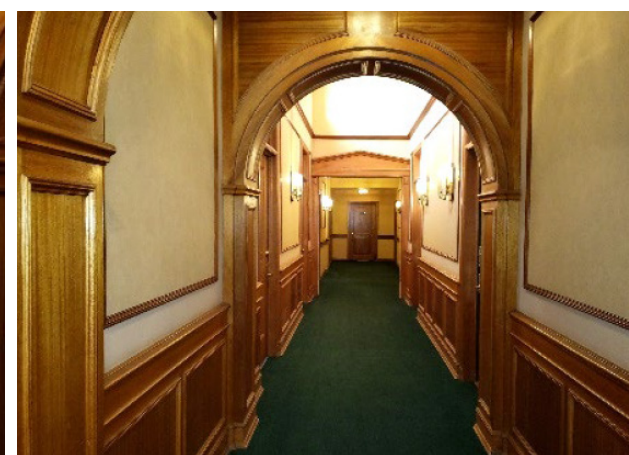
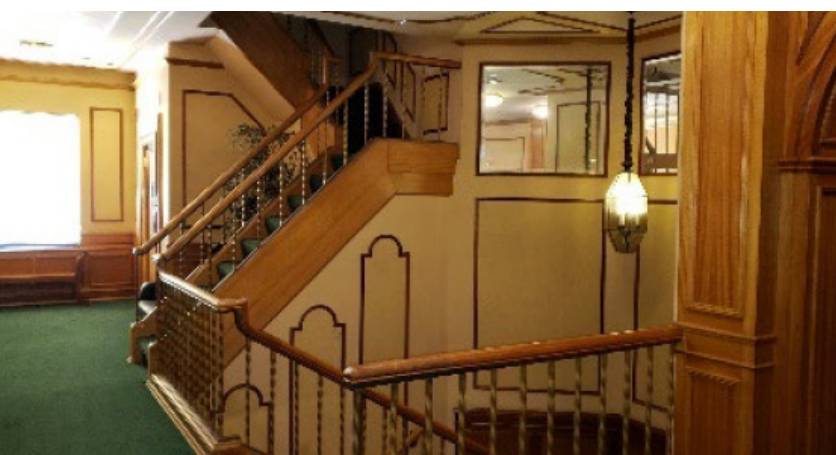
AVAILABILITIES

Suite	Size	Rate
214	Approx 203 SF	\$820 per mo FSG
220	Combined for approx 423 SF	\$1,700 per mo FSG
221		
222		

DEMOGRAPHICS

	1 Mile	2 Miles	3 Miles
2023 POPULATION	51,389	135,724	220,690
AVG HH INCOME	\$140,175	\$167,495	\$177,306
DAYTIME POPULATION	172,167	311,861	464,846

FOR LEASE



KIDDER.COM

This information supplied herein is from sources we deem reliable. It is provided without any representation, warranty, or guarantee, expressed or implied as to its accuracy. Prospective Buyer or Tenant should conduct an independent investigation and verification of all matters deemed to be material, including, but not limited to, statements of income and expenses. Consult your attorney, accountant, or other professional advisor.

