

For Sale



16,585 SF Industrial Space

4700 W. Ryan Rd., Franklin, WI 53132



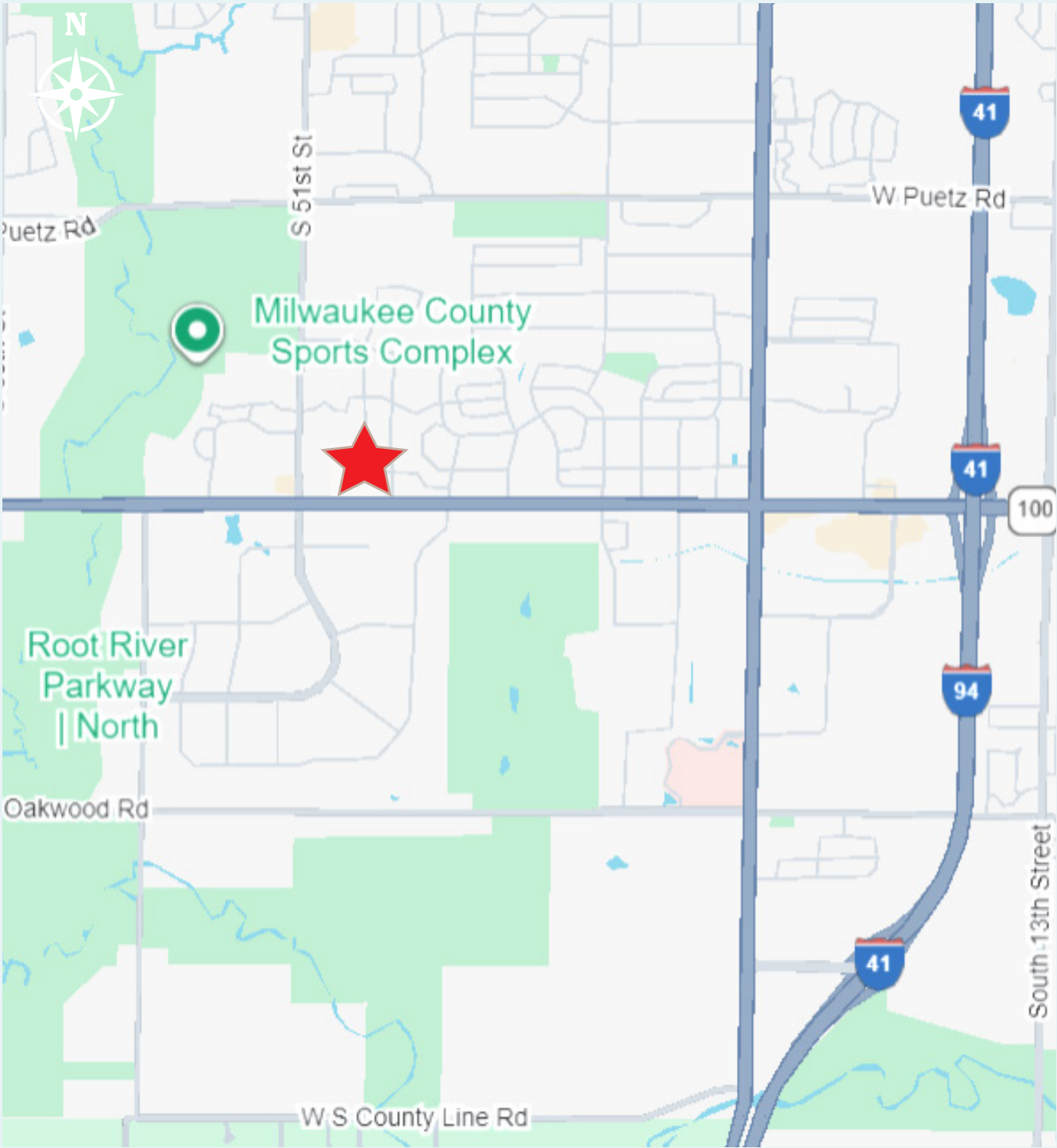
Jones Lang LaSalle Brokerage, Inc. a licensed real estate broker.

Property overview



Key Property Facts

Address	4700 W. Ryan Rd.
City, State	Franklin, WI
County	Milwaukee
Total building size	16,585 s.f.
Tenant	Mimaki USA
Built	2007
Current use	Office, Showroom, and Warehouse
Zoning	B3
Parking	60 spaces
Stories	One (1)



Property details

SALE PRICE

\$2,650,000

CONSTRUCTION

Masonry

CLEAR HEIGHT

16'

PARKING

Ample surface parking available

Lease details

TENANT

MIMAKI USA, INC.

LEASE EXPIRATION

June 30, 2028

BASE RENT

Contact broker

ANNUAL ESCALATION

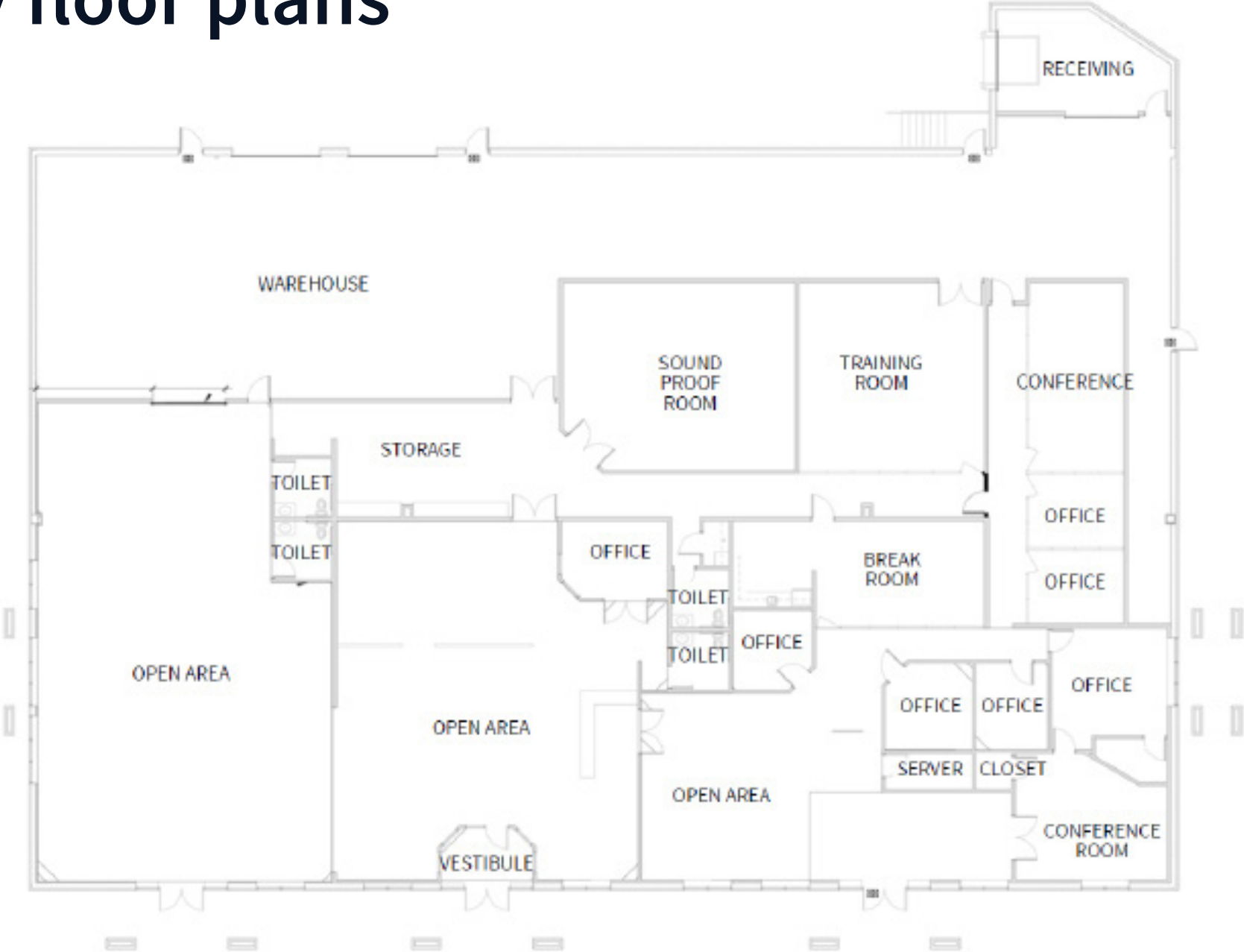
Contact broker

NOTES:

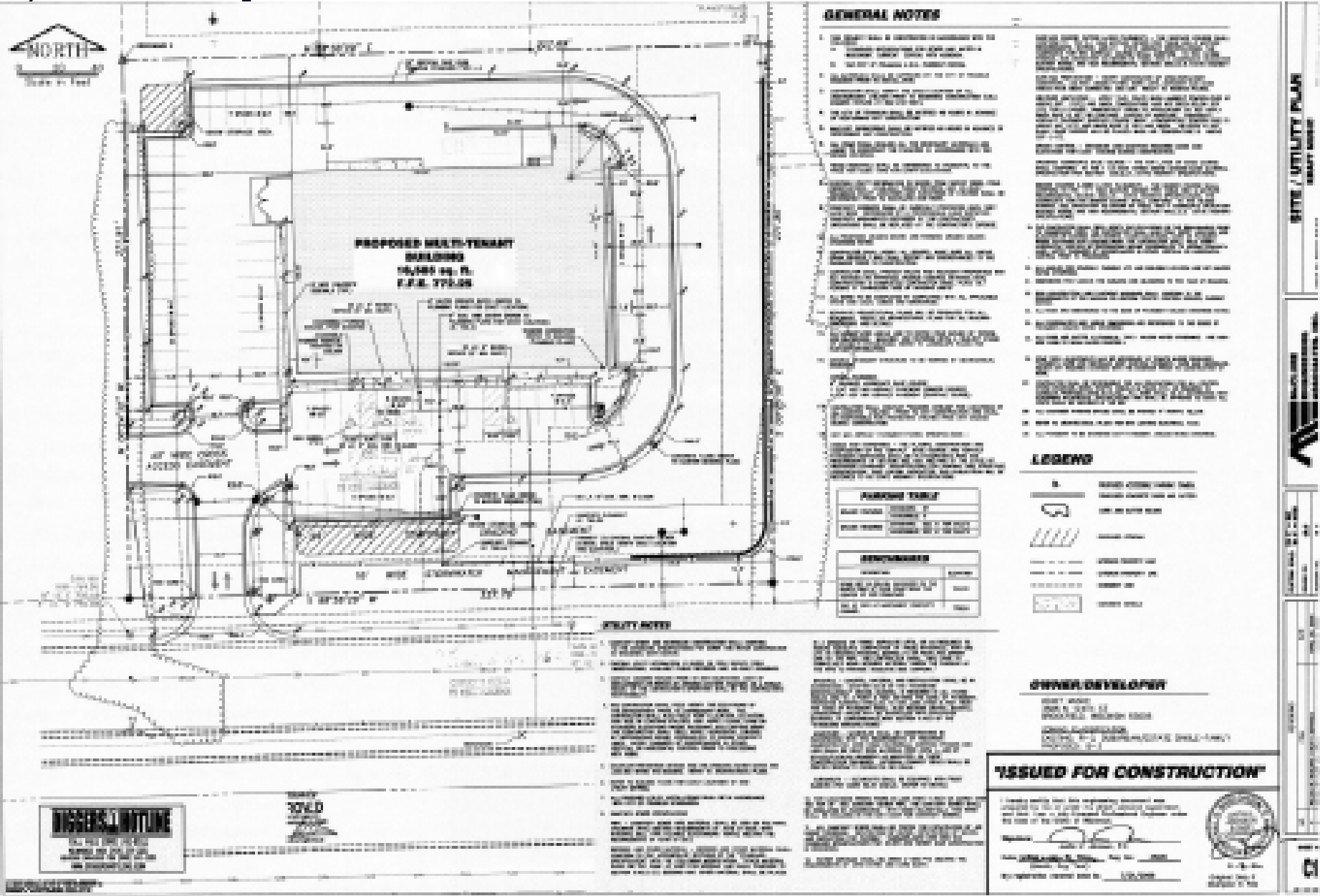
Tenant has vacated the premises and has put the space on the market for sublease presenting an opportunity for both investors and users.



Property **floor plans**



Property floor plans



Property **floor plans**

Site Data

BUILDING INFORMATION:

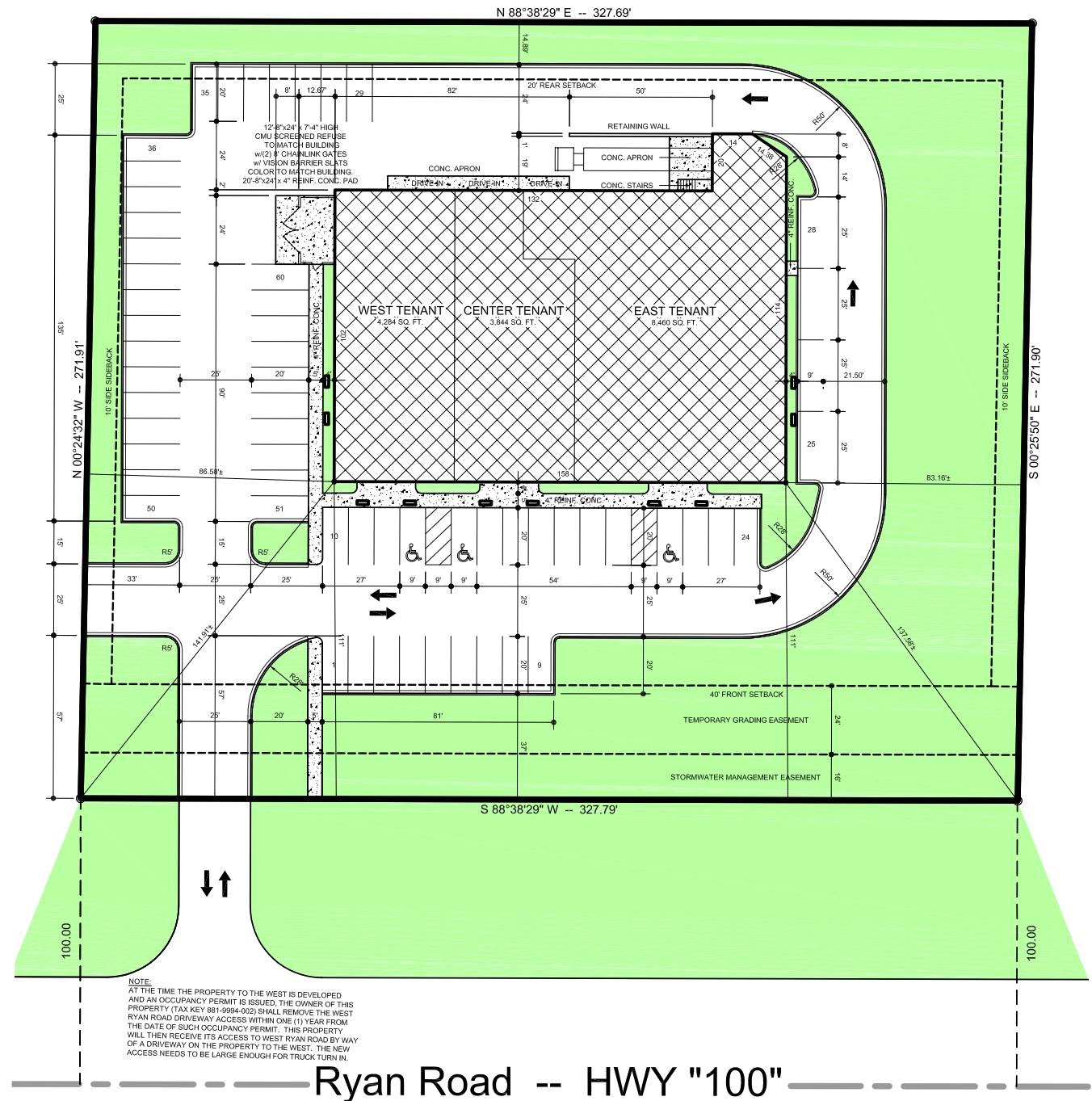
- Proposed Building Footprint: 16,588 SQ.FT.

SITE INFORMATION

- Site Area: 89,103 s.f. | 2.05 AC
- Impervious Area Ratio: 53,453 s.f. | 59.99%
- Pervious Area Ratio: 35,650 s.f. | 40.01%

PARKING INFORMATION:

- Number of parking spaces proposed: 60 stalls
- Number of parking spaces required: 60 stalls
- Warehouse 35% of building 5,806 x .05/1000 s.f. + 3 stalls
- Retail 65% of building 10,782 x 5/1000 s.f. = 54 stalls
- (3) H.C. Stalls required between 51-75 stalls



Local market



Get in touch

Joe Carollo

Vice President

+1 414 412 3363

joe.carollo@jll.com

Jim Young

Senior Vice President

+1 262 853 4002

james.young@jll.com

JLL Milwaukee

250 E. Wisconsin Ave.

Suite 1700

Milwaukee, WI 53202

Although information has been obtained from sources deemed reliable, JLL does not make any guarantees, warranties or representations, express or implied, as to the completeness or accuracy as to the information contained herein. Any projections, opinions, assumptions or estimates used are for example only. There may be differences between projected and actual results, and those differences may be material. JLL does not accept any liability for any loss or damage suffered by any party resulting from reliance on this information. If the recipient of this information has signed a confidentiality agreement with JLL regarding this matter, this information is subject to the terms of that agreement. ©2025 Jones Lang LaSalle Brokerage, Inc. All rights reserved.