



3201 E. PIONEER PARKWAY

SUITE 40 | 1,000 SF

GRAND PRAIRIE, TEXAS 75050

HIGHLIGHTS

- Situated prominently on E. Pioneer Parkway, this versatile commercial property offers an ideal location for businesses seeking accessibility, visibility, and growth potential. With flexible layouts suitable for retail, service operations, or office use, the property features ample parking, convenient access, and proximity to major thoroughfares, making it perfect for businesses ready to thrive in Arlington.
- 1,000 SF Available
- Flex Space & Storage Opportunities
- 12' Deck Height
- 10' Clear Height
- Close access to HWY-360



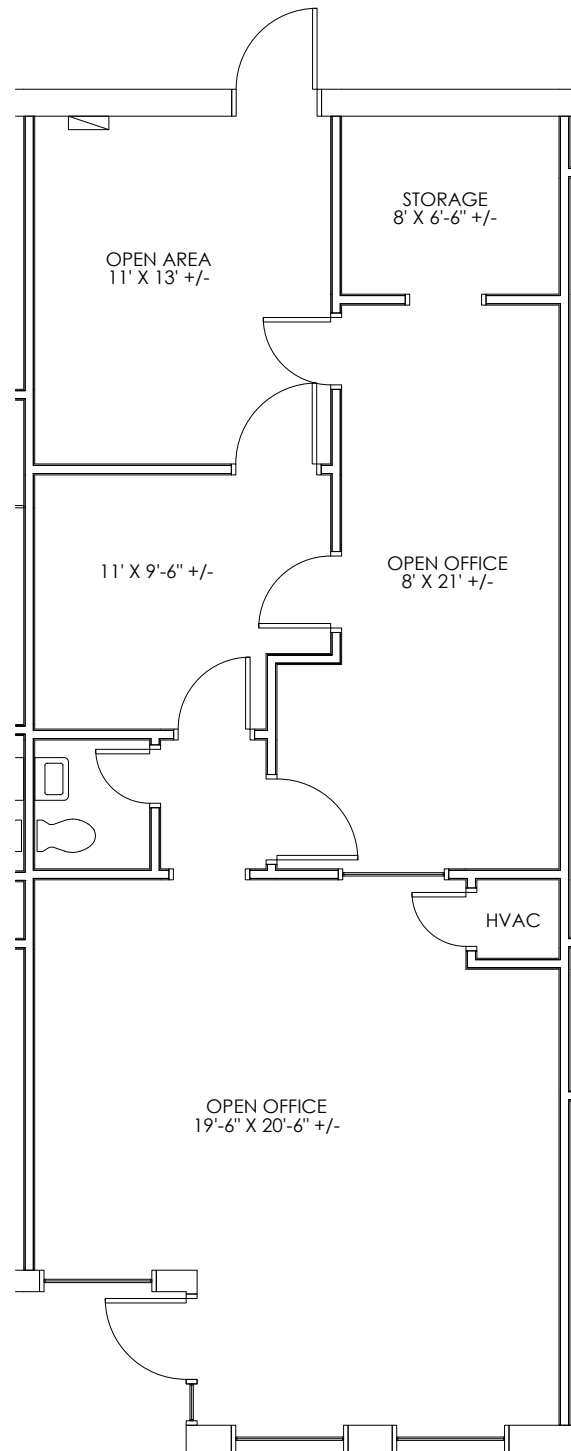
SAM HARRELL
214.305.6720
SAM.HARRELL@STREAMREALTY.COM

GIOVANNI SCARDINO
847.612.8488
GIOVANNI.SCARDINO@STREAMREALTY.COM

3201 E. PIONEER PARKWAY

SUITE 40 | 1,000 SF

GRAND PRAIRIE, TEXAS 75050



SAM HARRELL
214.305.6720
SAM.HARRELL@STREAMREALTY.COM

GIOVANNI SCARDINO
847.612.8488
GIOVANNI.SCARDINO@STREAMREALTY.COM

