



## Property Specifications

±700 SF  
TOTAL BUILDING SPACE

Ideal Use Includes Retail Store,  
Office, Beauty / Nail Salon,  
Coffee Shop, Deli / Sandwich,  
Smoke Shop, Restaurant, Pet Care  
IDEAL USE

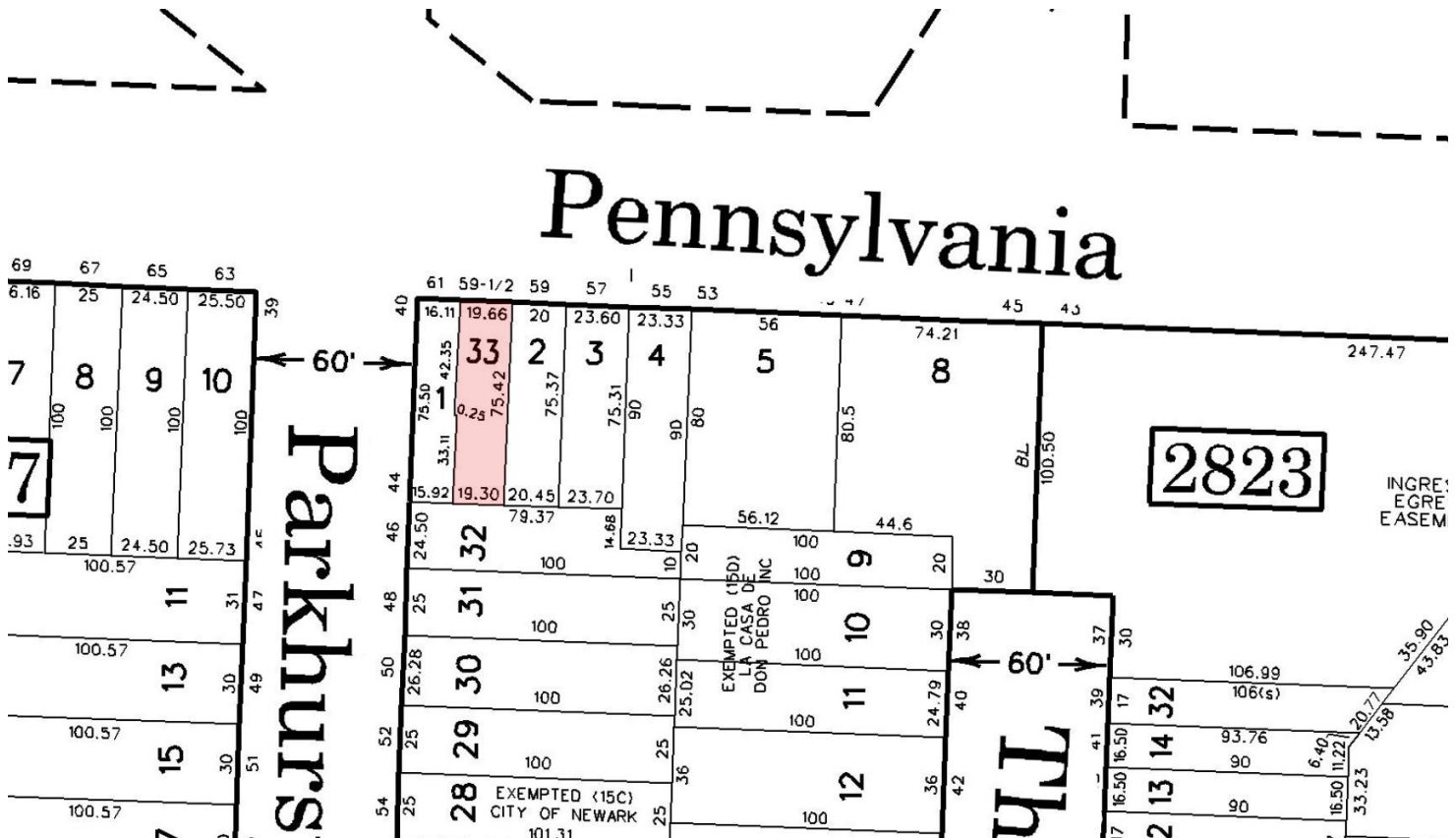
1 Block to NJ Transit Bus 24, 62, 67  
PUBLIC TRANSPORTATION

0.8 Miles to I-78  
1.1 Miles to US Hwy 1 & 9  
1.4 Miles to Penn Station  
3.9 Miles to Newark Airport  
ACCESSIBILITY

For additional property information or to arrange an inspection,  
please contact the exclusive broker:

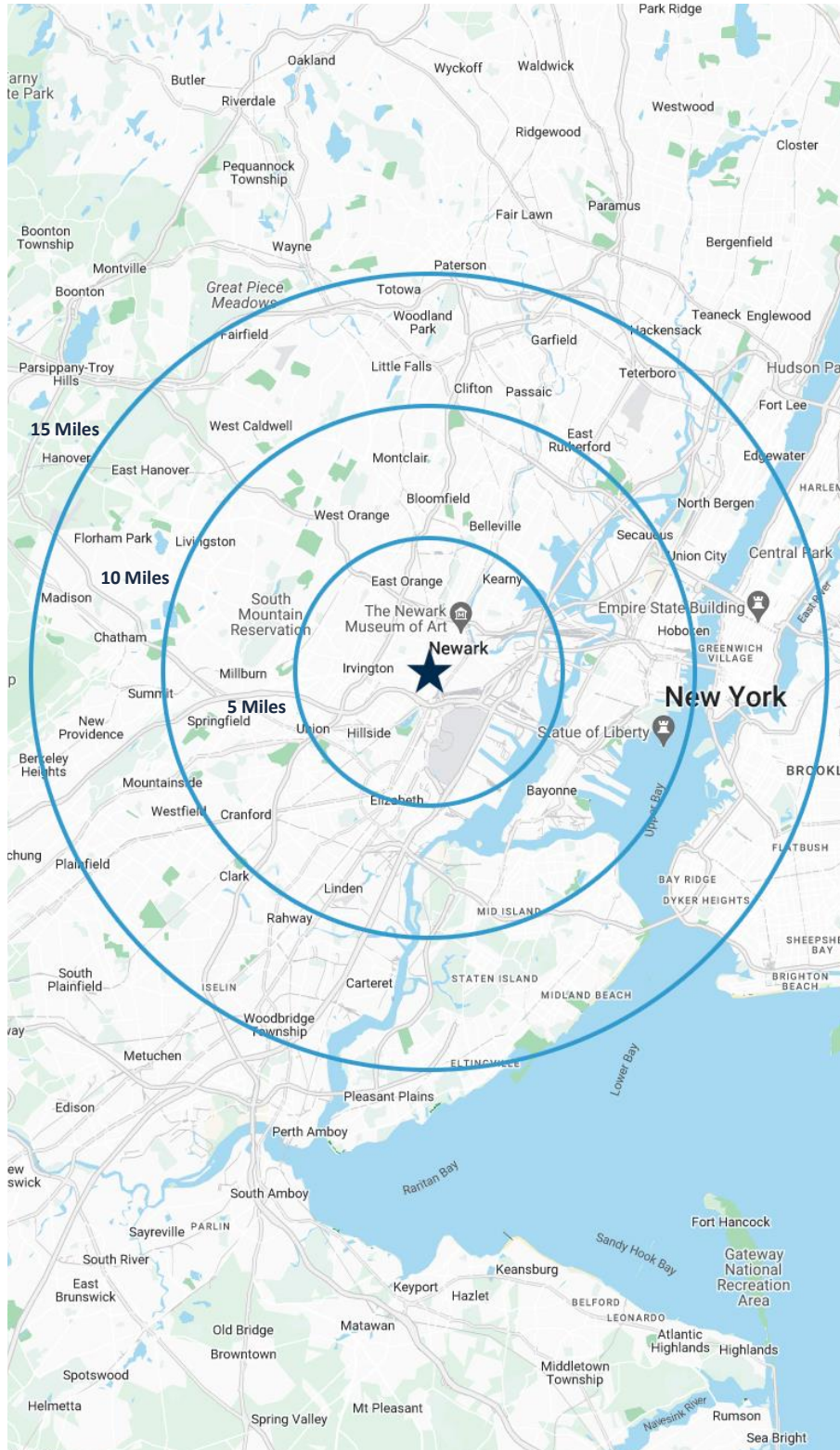
Juan Disla  
Director  
973.379.6644 x 153  
JD@blauberg.com





For additional property information or to arrange an inspection,  
please contact the exclusive broker:

Juan Disla  
Director  
973.379.6644 x 153  
JD@blauberg.com



### 5 MILES

- Total Population: 841,284
- Households: 310,987
- Median Household Income: \$71,549
- Average Household Size: 2.6
- Transportation to Work: 407,146
- Labor Force: 669,875

### 10 MILES

- Total Population: 2.67M
- Households: 1.06M
- Median Household Income: \$107,890
- Average Household Size: 2.5
- Transportation to Work: 1.38M
- Labor Force: 2.17M

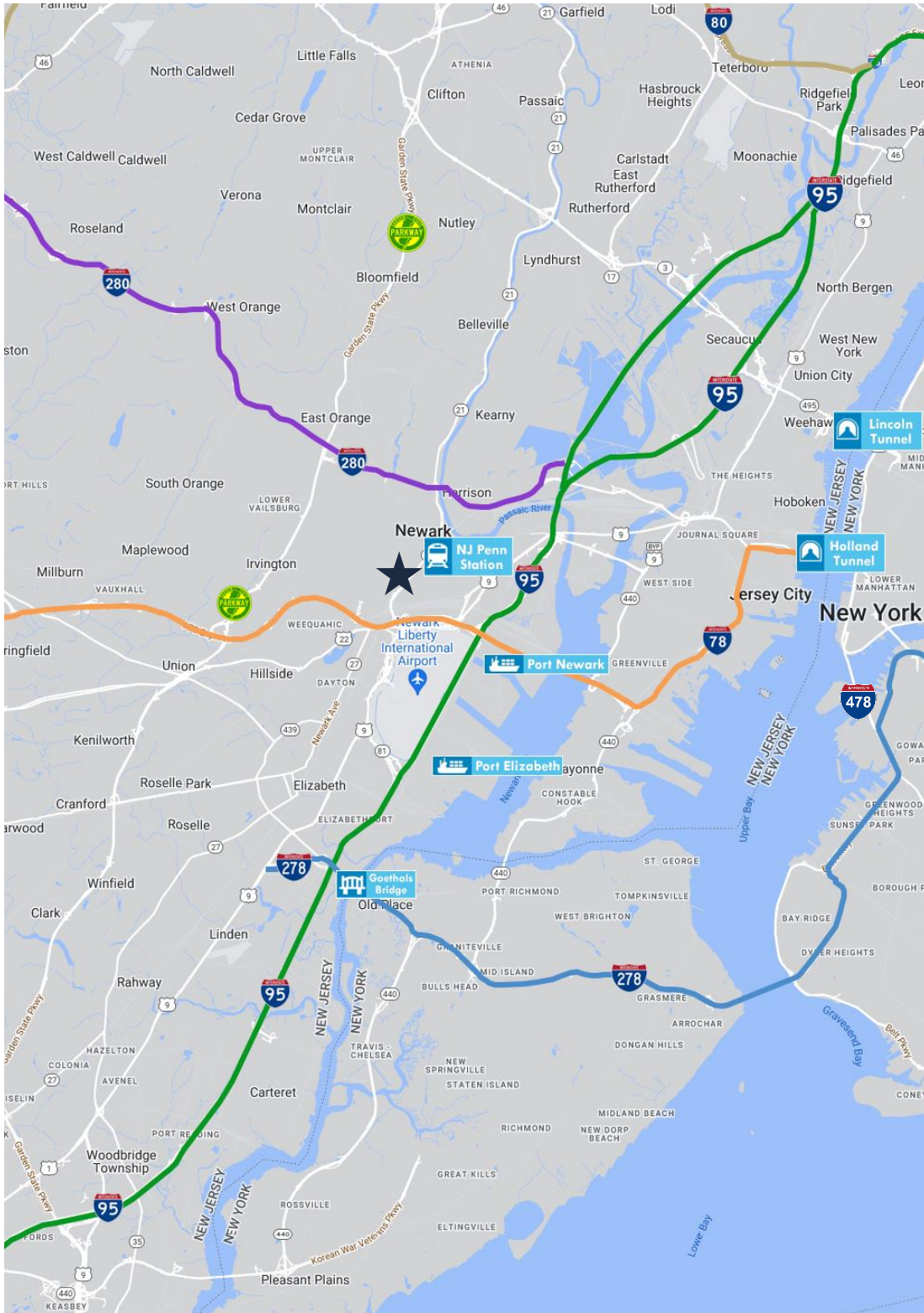
### 15 MILES

- Total Population: 7.82M
- Households: 3.17M
- Median Household Income: \$104,806
- Average Household Size: 2.4
- Transportation to Work: 4.04M
- Labor Force: 6.42M

For additional property information or to arrange an inspection, please contact the exclusive broker:

Juan Disla  
Director  
973.379.6644 x 153  
JD@blauberg.com





**ACCESSIBILITY**

- 

0.8 MI  
I-78
- 

1.1 MI  
US Hwy 1 & 9
- 

1.4 MI  
Penn Station
- 

3.9 MI  
EWR
- 

4.2 MI  
Ports Newark  
and Elizabeth
- 

5.1 MI  
I-95 Exit 14
- 

6.8 MI  
I-278
- 

13.39 MI  
Holland Tunnel
- 

13.3 MI  
Lincoln Tunnel

For additional property information or to arrange an inspection,  
please contact the exclusive broker:

Juan Disla  
Director  
973.379.6644 x 153  
JD@blauberg.com

The information contained herein has been obtained from sources considered to be reliable, but no guarantee of its accuracy is made by this company. In addition, no representation is made respecting zoning, condition of title, dimensions, or any matters of a legal or environmental nature. Such matters should be referred to legal counsel for determination. Terms and conditions are subject to change without prior notice. Subject to errors and omissions.