

# BEACON EXECUTIVE CENTER

8600 NW 17TH STREET | DORAL, FL 33126

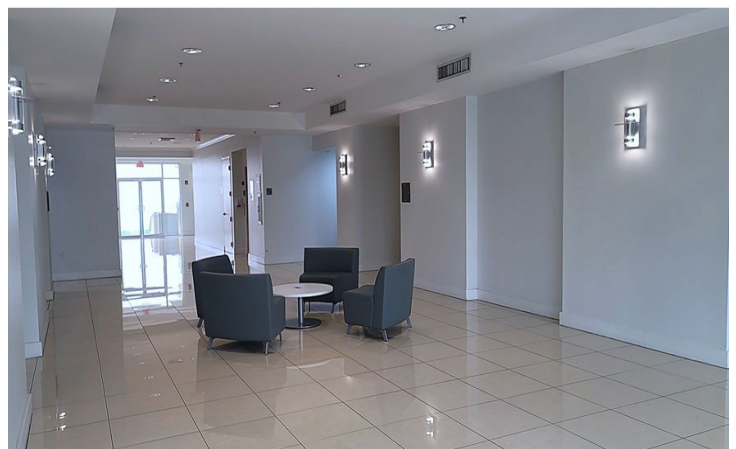
## OFFICE SPACE FOR LEASE



### PROPERTY IMAGES



FRONT ENTRANCE



LOBBY - ELEVATORS

**MATTHEW A. BITTEL, SIOR**  
Senior Director  
+1 305 805 3032  
[matthew.bittel@cushwake.com](mailto:matthew.bittel@cushwake.com)

**STUART GORDON, SIOR**  
Executive Director  
+1 305 805 5427  
[stuart.gordon@cushwake.com](mailto:stuart.gordon@cushwake.com)



9960 NW 116<sup>th</sup> Way, Ste. 2  
Miami, FL 33178  
[cushmanwakefield.com](http://cushmanwakefield.com)



# BEACON EXECUTIVE CENTER

8600 NW 17TH STREET | DORAL, FL 33126

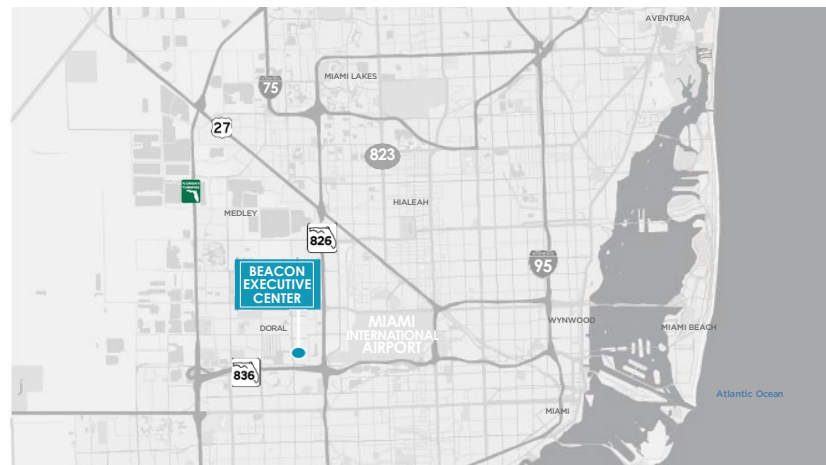
## OFFICE SPACE FOR LEASE

### AERIAL VIEW



### LOCATION HIGHLIGHTS

- Easy access to Dolphin Expressway SR-836 and Palmetto Expressway SR-826
- Strategically located within proximity to numerous restaurants and other retailers
- Miami International Airport - 2 miles east
- Florida's Turnpike - 3 miles west



**MATTHEW A. BITTEL, SIOR**  
Senior Director  
+1 305 805 3032  
[matthew.bittel@cushwake.com](mailto:matthew.bittel@cushwake.com)

**STUART GORDON, SIOR**  
Executive Director  
+1 305 805 5427  
[stuart.gordon@cushwake.com](mailto:stuart.gordon@cushwake.com)

**CUSHMAN & WAKEFIELD**  
9960 NW 116th Way, Ste. 2  
Miami, FL 33178  
[cushmanwakefield.com](http://cushmanwakefield.com)