

# Flex Buildings off Interstate 85

Southern Business Park | 516 & 518 Teague Street | Greensboro, NC 27406



- ♦ Available For Lease or Sale
- ♦ Two Buildings: 7,225 SF & 8,225 SF
- ♦ Office and Warehouse Space
- ♦ Dock High and Drive-in Doors
- ♦ Nicely Built Office Space
- ♦ Ceiling Heights: 15' - 19' clear
- ♦ Zoned Light Industrial

Well maintained office warehouse buildings conveniently located in the Southern Business Park located off Randleman Road and minutes from Interstate 85.

Both buildings have about 50% office space and will be available January 1, 2026.

Call for more details.

**JJ Joubran, CCIM, SIOR**  
(336) 270-9775  
JJ@JoubranCommercial.com



# Flex Buildings off Interstate 85

Southern Business Park | 516 & 518 Teague Street | Greensboro, NC 27406



**JJ Joubran, CCIM, SIOR**

(336) 270-9775

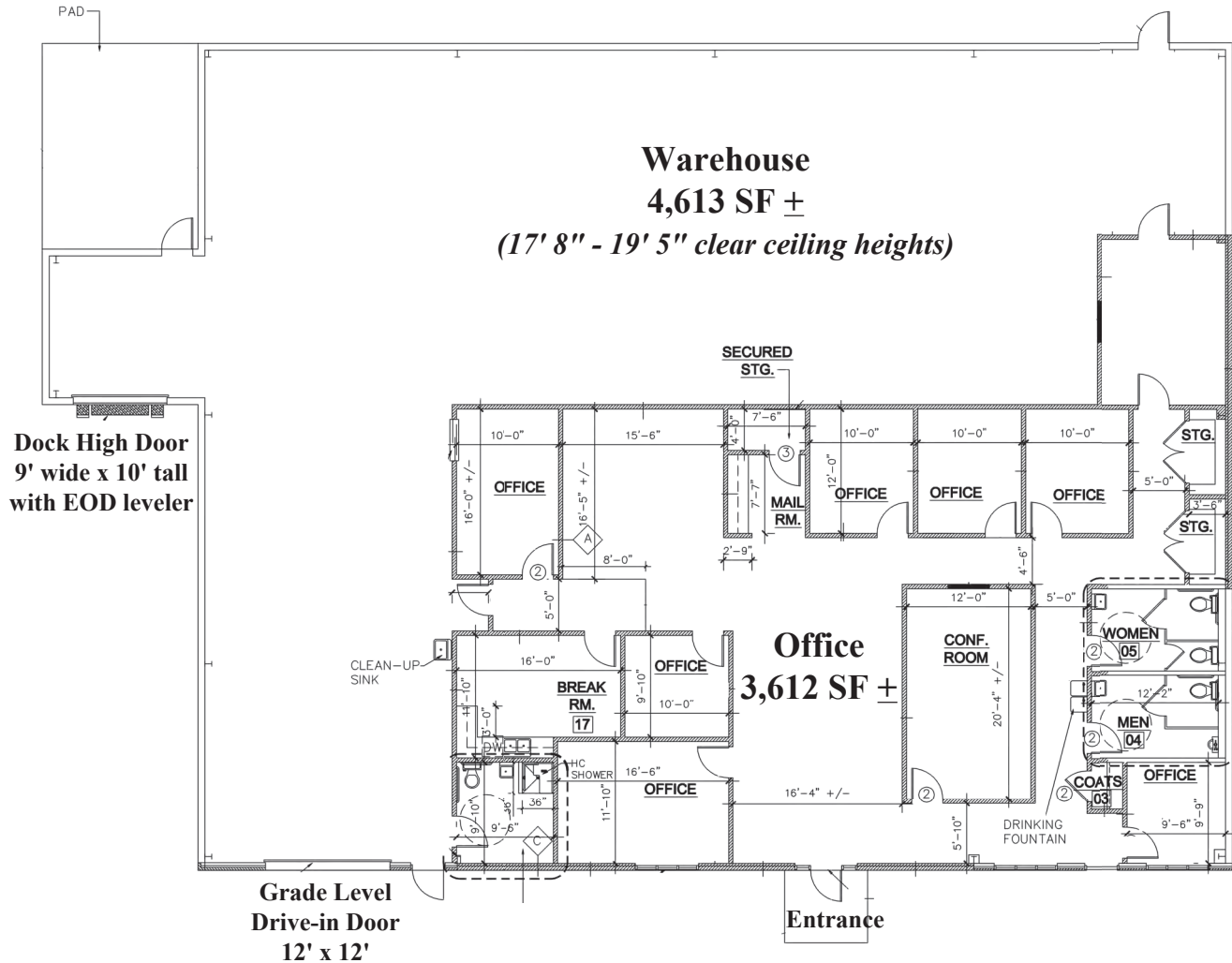
JJ@JoubranCommercial.com



# 518 Teague Street

## 8,225 SF ±

### Floor Plan

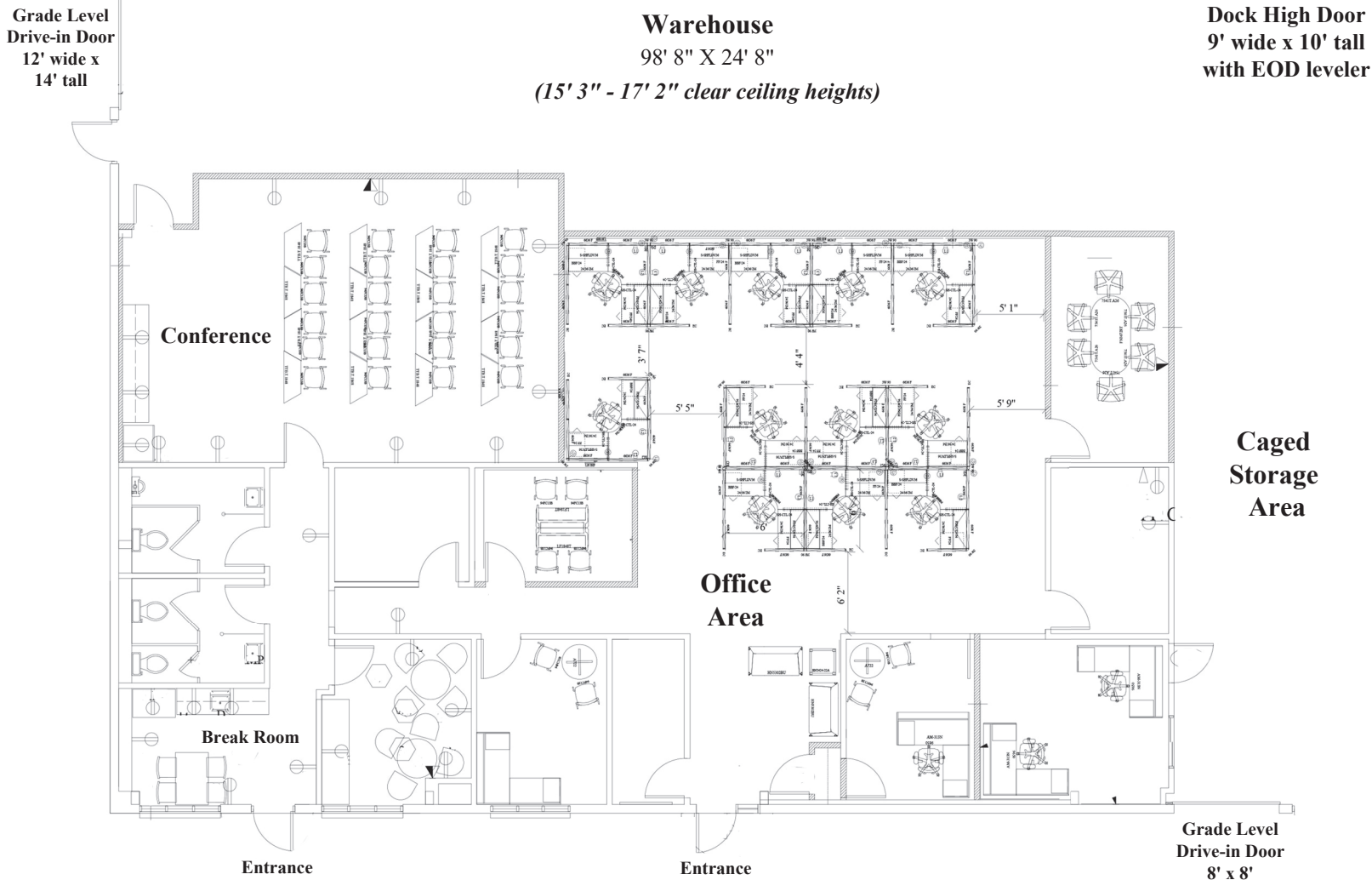


**Contact:**  
**JJ Joubran, CCIM, SIOR**  
**Joubran Commercial Properties**  
**(336) 270-9775**  
[JJ@JoubranCommercial.com](mailto:JJ@JoubranCommercial.com)  
[JoubranCommercial.com](http://JoubranCommercial.com)

# 516 Teague Street

## 7,225 SF ±

### Partial Floor Plan



**Contact:**  
**JJ Joubran, CCIM, SIOR**  
**Joubran Commercial Properties**  
**(336) 270-9775**  
[JJ@JoubranCommercial.com](mailto:JJ@JoubranCommercial.com)  
[JoubranCommercial.com](http://JoubranCommercial.com)