



130 DIAMOND CREEK PLACE

*±3,438 SF Available
Suite A*

ROSEVILLE, CA 95747



One of a kind office space featuring a gorgeous build out with very high ceilings and a window line looking out into the oak tree preserve.

AVAILABLE SF	±3,438 SF
LEASE RATE	\$2.15/SF
LEASE TYPE	Full Service Gross

Conference room with wet bar, fridge and doors leading to the patio

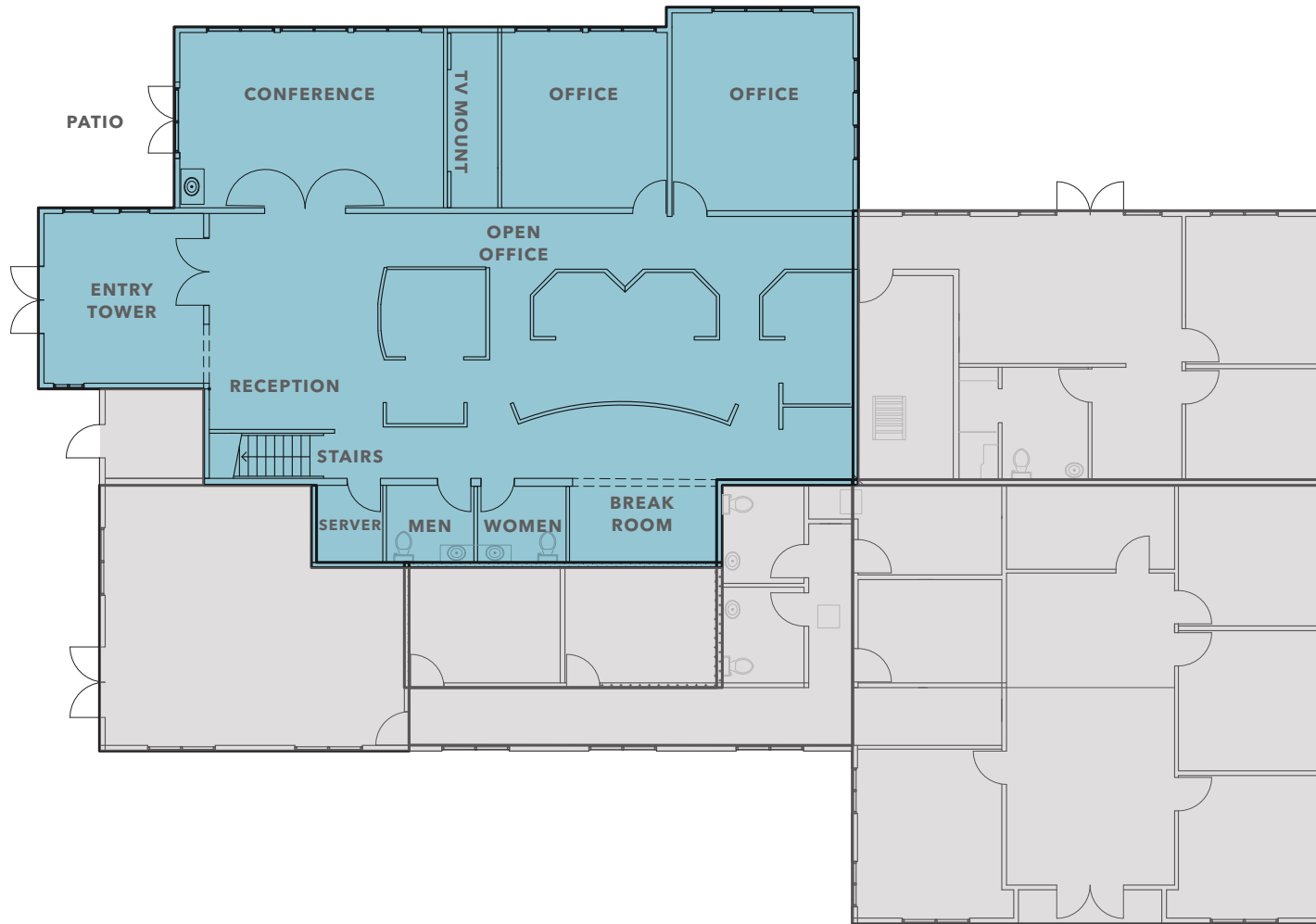
Built in reception desk, work stations, and file cabinets

Full custom kitchen with high end appliances

Mens and Womens restrooms inside the suite

Stair access to a 3rd floor lookout

SUITE A FLOOR PLAN



±3,438 SF

AVAILABLE

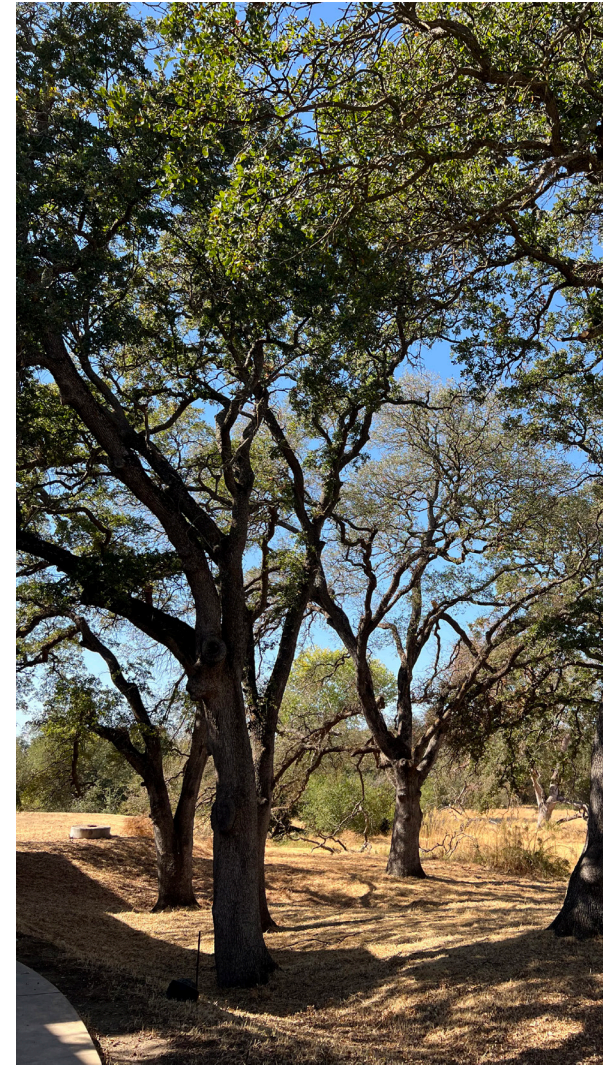
\$2.15/SF FS

LEASE RATE/SF

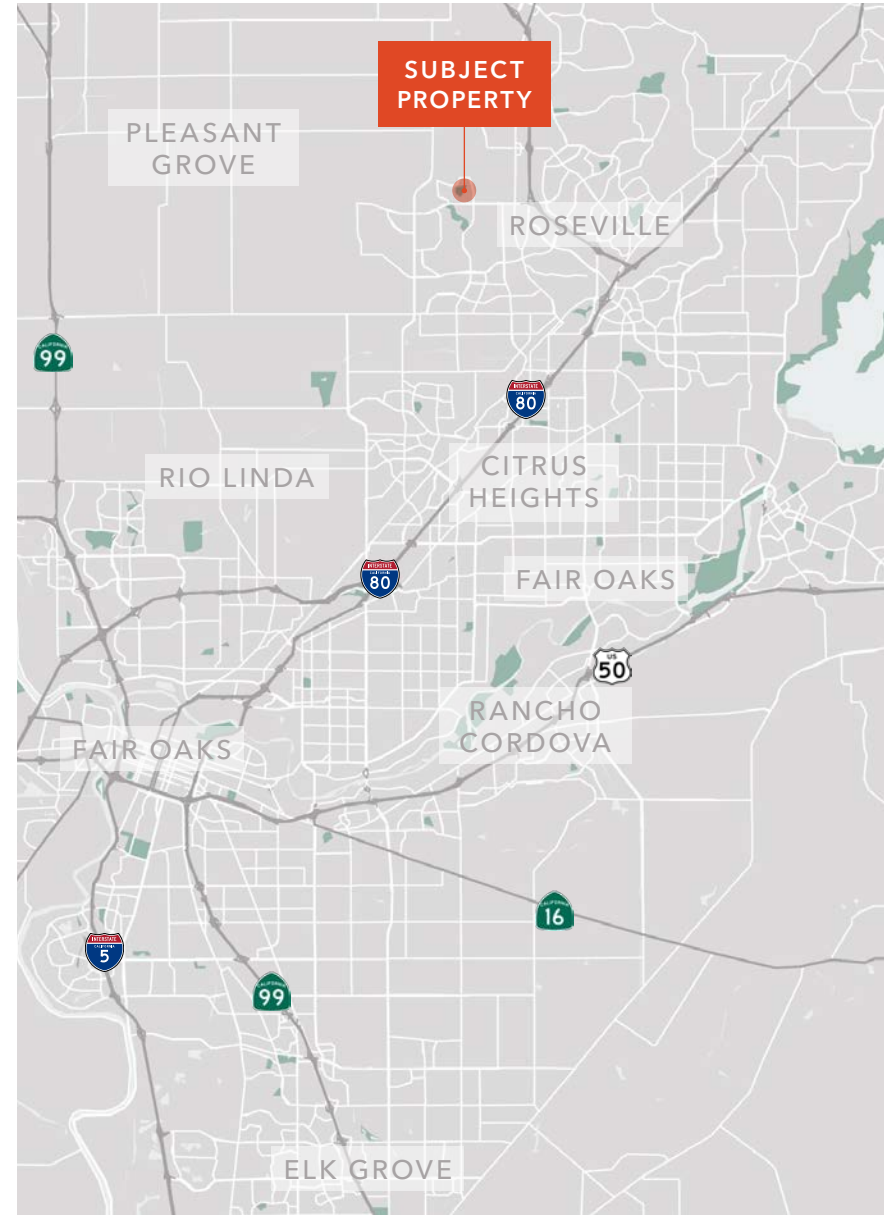
NOW

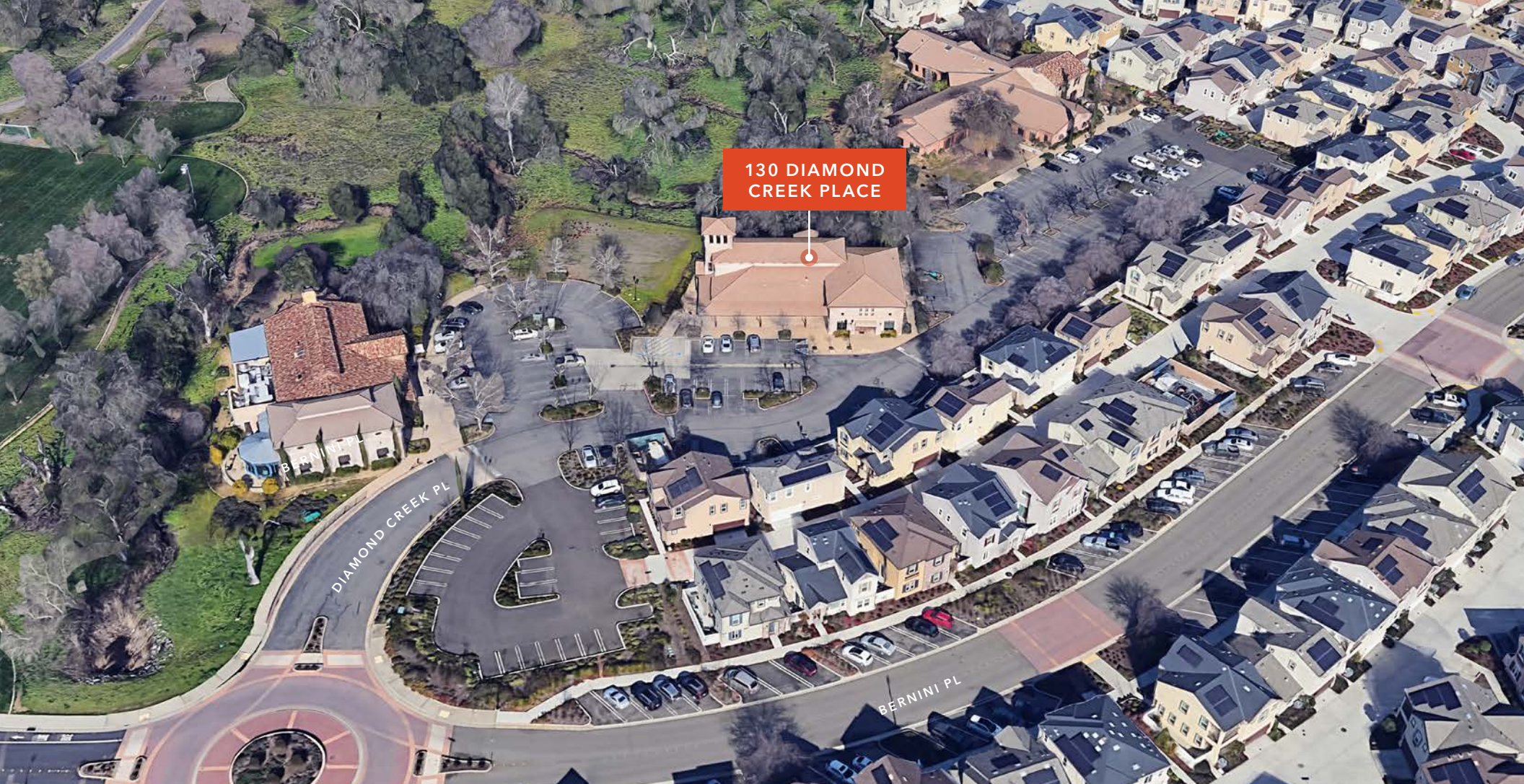
AVAILABLE

PHOTOS



130 DIAMOND CREEK PLACE





130 DIAMOND
CREEK PLACE

130 DIAMOND CREEK PLACE

*For more information on
this property, please contact*

JON WALKER
916.751.3631
jon.walker@kidder.com
LIC N° 01204666

KIDDER.COM

This information supplied herein is from sources we deem reliable. It is provided without any representation, warranty, or guarantee, expressed or implied as to its accuracy. Prospective Buyer or Tenant should conduct an independent investigation and verification of all matters deemed to be material, including, but not limited to, statements of income and expenses. Consult your attorney, accountant, or other professional advisor. All Kidder Mathews designs are the sole property of Kidder Mathews. Branded materials and layouts are not authorized for use by any other firm or person.

