

Union 222 *Square*
STOCKTON



maven
RETAIL

2,600 GROUND + 1,690 LOWER LEVEL

RARELY AVAILABLE UNION SQUARE LOCATION

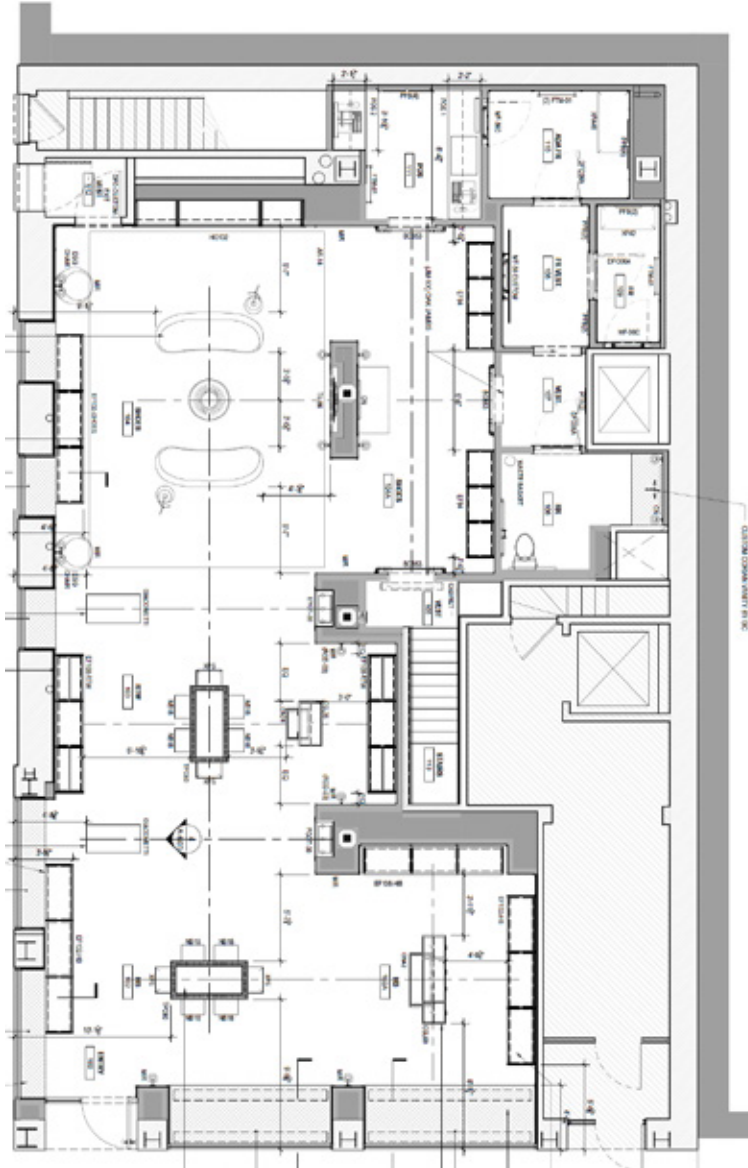
Features

- 2,600 SF on ground
- 1,690 SF Lower Level
- Prominent corner located on Union Square at the intersection of Maiden Lane and Stockton Street
- Over 100 feet of wraparound store frontage
- High volume foot traffic
- Recent full renovation
- Customer parking nearby
- Elite neighbors including Gucci, Moncler, Bvlgari, Neiman Marcus, Loro Piana, Louis Vuitton, Apple, and Chanel

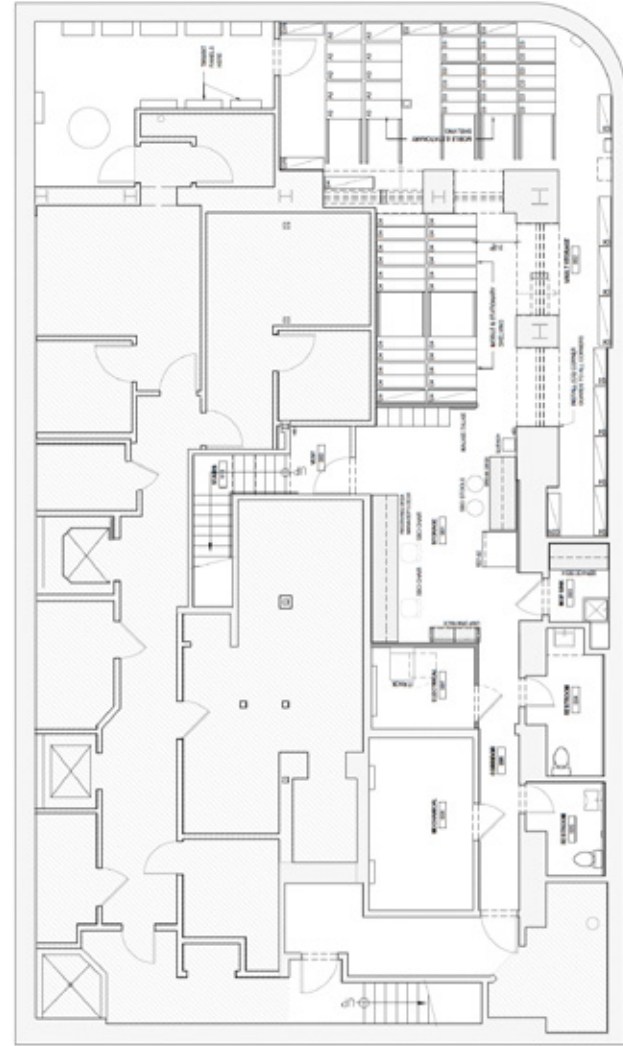




Floor Plans



GROUND LEVEL



LOWER LEVEL

Our Neighbors

Dior

VALENTINO


CHANEL

DITA

FENDI


LOUIS VUITTON

DOLCE & GABBANA


BRUNELLO
CUCINELLI

**MONT
BLANC**

BOTTEGA VENETA

Neiman Marcus

MONCLER


BREITLING
1884

Acne Studios



Van Cleef & Arpels

GUCCI



HARRY WINSTON

SAINT LAURENT

TIFFANY & CO.


OMEGA


GOYARD

Maison Margiela

RIMOWA®

Cartier

 *Loro Piana*

Neighborhood



..... Union Square

222 Stockton Street is located on a bustling block in San Francisco's historic Union Square. The building is located on a street filled with trending shops and unique boutiques, many of them longtime destinations for Bay Area shoppers and tourists. This retail space also enjoys the proximity to major touristic landmarks such as the Powell St. Cable Car, Chinatown, and Union Square, as well as a multitude of nearby hotels and boarding accommodations. Several parking garages and public transportation are located nearby.



TIFFANY & CO



LOUIS VUITTON



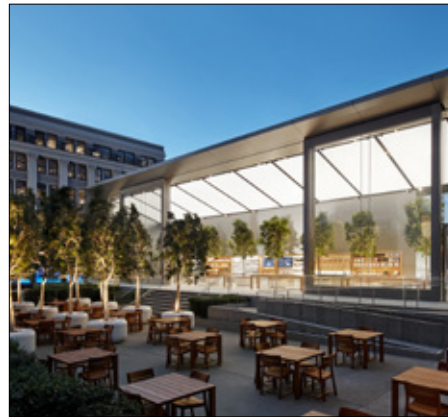
NEIMAN MARCUS



VALENTINO



BOTTEGA VENETA



APPLE



ACNE STUDIOS



DOLCE&GABBANA



MAISON MARGIELA



GUCCI



MONCLER



BRUNELLO CUCINELLI

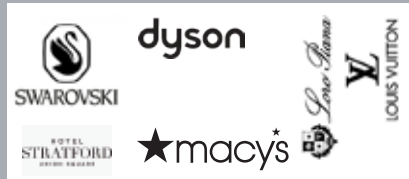
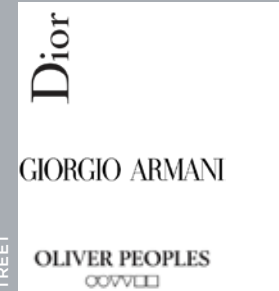
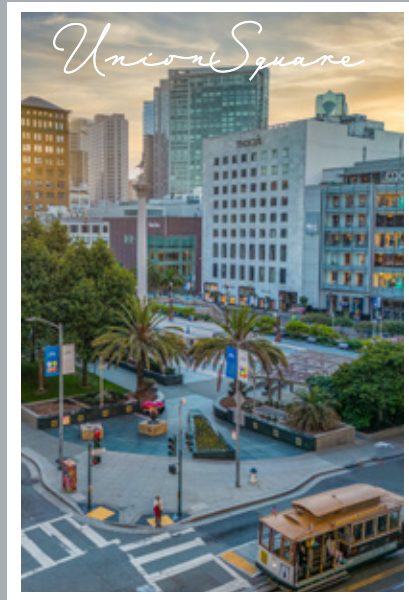
MASON STREET

POWELL STREET

STOCKTON STREET

GRANT STREET

KEARNY STREET



99
WALK SCORE

90
BIKE SCORE

100
TRANSIT SCORE



maven
RETAIL

PAMELA MENDELSON

office 415.404.6650
pam@mavenproperties.com
DRE #00953050

GLORIA NORDBAKK

office 415.225.0626
gloria@mavenproperties.com
DRE #02207407

SAGE MIRSKY

office 907.821.1049
sage@mavenproperties.com
DRE #02238781

222 STOCKTON — FOR LEASE

NOTICE: This information has been secured from sources we believe to be reliable but we make no representations, warranties, express or implied, as to the accuracy of the information. Listing broker has been given enough information to provide only a preliminary interest in the property. The materials are not to be considered fact. The information contained herein is not a substitute for thorough due diligence investigation. References to square footage, zoning, use, or age are approximate. Please contact the San Francisco Planning Department to verify zoning at (415) 558-6378, as neither broker or landlord represent that this space is suitable for your use. Tenant or Buyer must verify the information at their own expense and bears all the risk for any inaccuracies. By receiving these materials you are agreeing to the disclaimers set forth herein. DRE#01878802

466 Green Street Suite #203 | San Francisco, CA 94133 | 415-781-7700 | www.mavenproperties.com