

Princeton Mall Spaces for lease



114 S Rum River Dr,
Princeton, MN 55371



Spaces available for Lease in Princeton Mall. Space sizes vary from 518 SQF to 1835 SQF

- Available spaces 518-1835 SQF
- Fully Sprinklered Single Story Building
- 154 parking spaces

Co-tenants

NAPA auto Parts	H&R Block
Dominos	PeopleReady
Twice New Clothing Center	TheMark
Brains and Games	and many more



7401 Bush Lake Rd Edina, MN 55439.



sean@caspianrealty.com



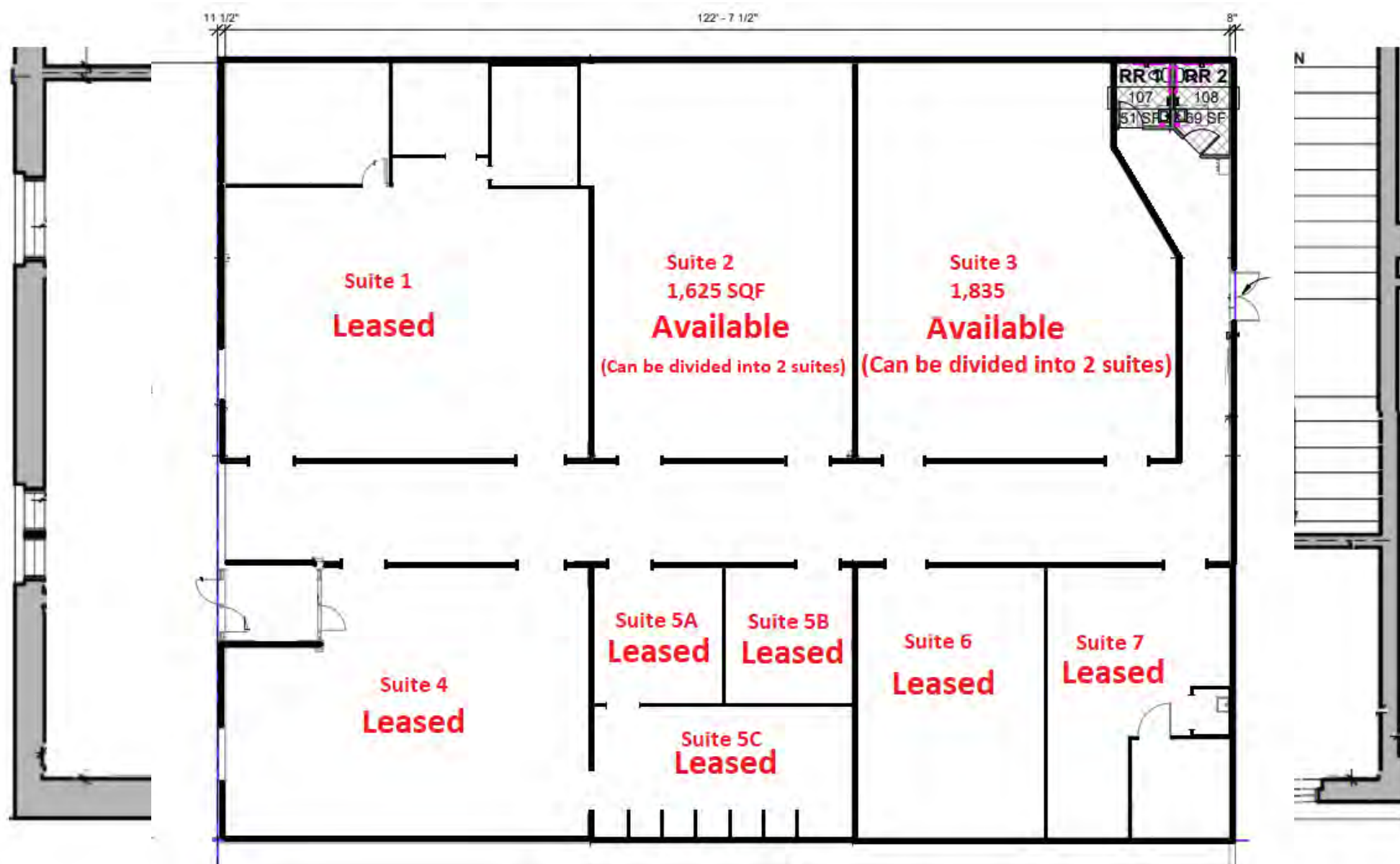
www.caspianrealty.com

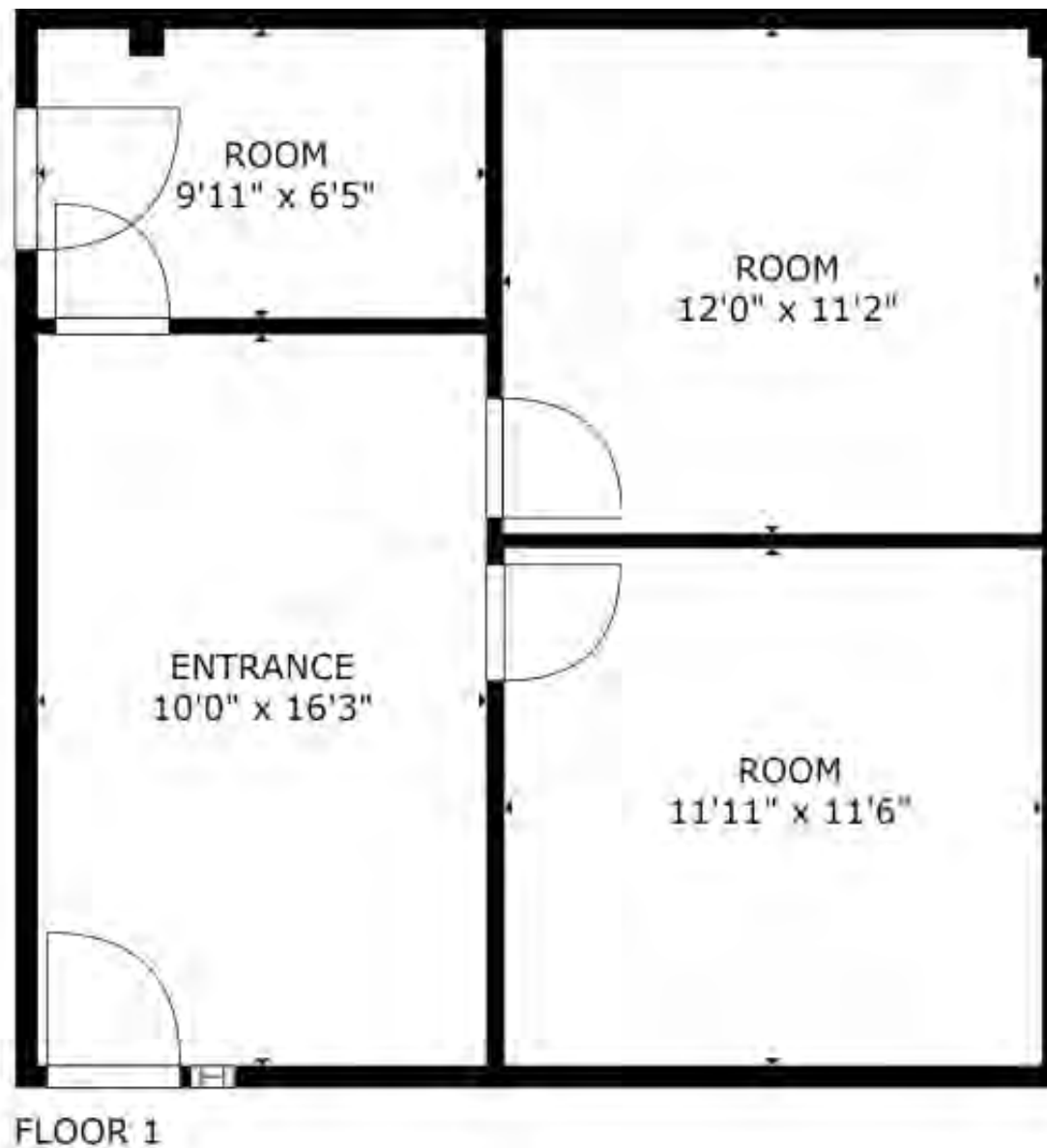
County	Mille Lacs County
Lease Price	\$12/sqft
Year Built	1981
Property Type	Retail
Traffic Count	13,000 VPD on S Rum River Drive
HWY VPD	18,300 hwy 169 NW

All Units and Sizes

Unit 145 (Office space)	518 SQF
Unit 2 (Retail space)	1625 SQF (can be divided)
Unit 3 (Retail space)	1835 SQF (can be divided)
Unit 6 (Retail space)	800 SQF













Income

Median Household Income

\$61,995

National \$69,021

Median Individual Income

\$29,704

National \$34,429

Household Income Brackets

<\$25k	18%
\$25-\$44k	19%
\$45-\$74k	23%
\$75-\$149k	32%
\$150k+	8%

Individual Income Brackets

<\$15k	25%
\$15-\$34k	32%
\$35-\$64k	28%
\$65k+	15%



Mille Lacs County

In 2020, Mille Lacs County, MN had a population of 26k people with a median age of 40.4 and a median household income of \$57,173. Between 2019 and 2020 the population of Mille Lacs County, MN grew from 25,865 to 25,963, a 0.379% increase and its median household income grew from \$56,135 to \$57,173, a 1.85% increase.

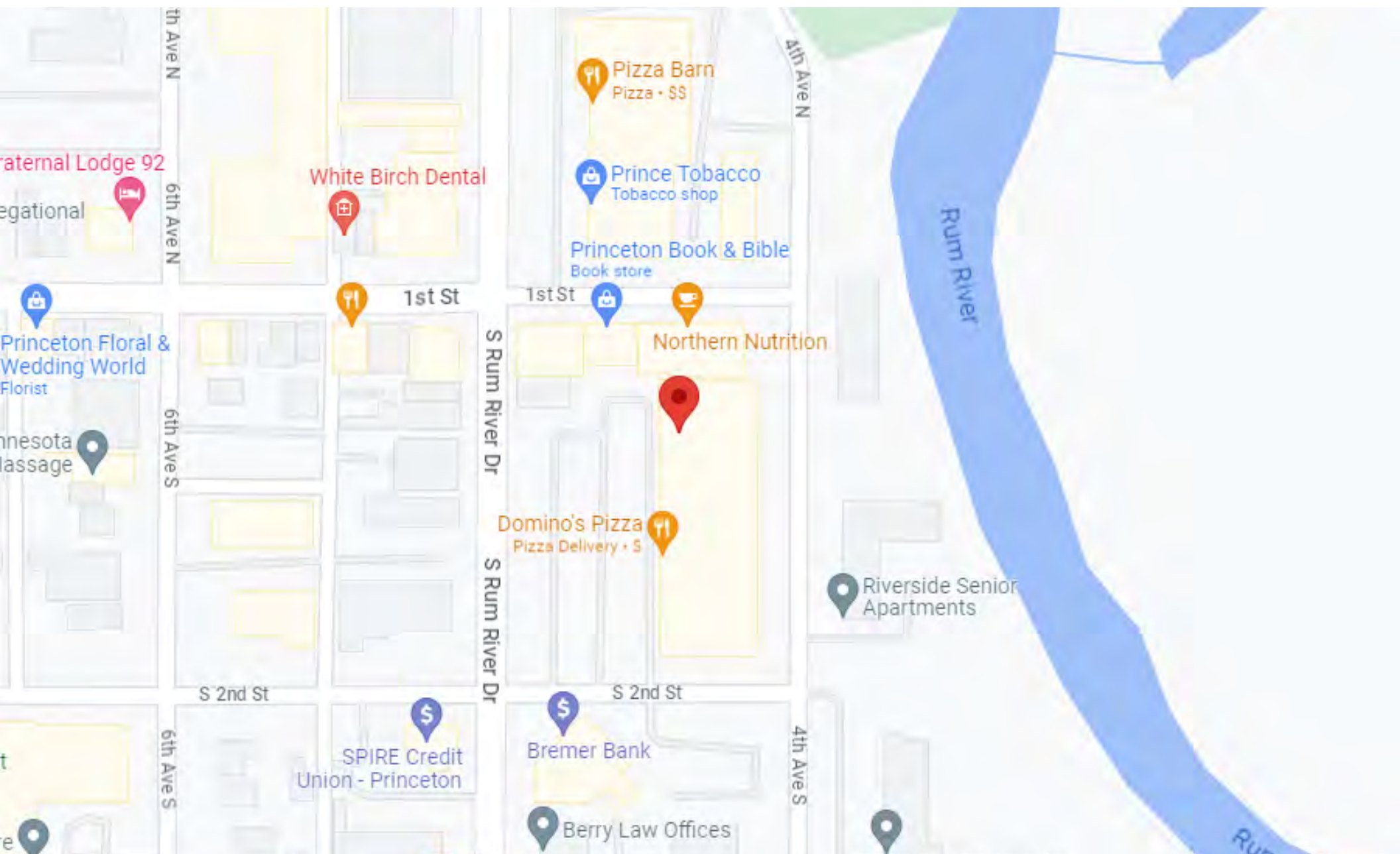
The 5 largest ethnic groups in Mille Lacs County, MN are White (Non-Hispanic) (88.6%), American Indian & Alaska Native (Non-Hispanic) (4.56%), Two+ (Non-Hispanic) (3.09%), White (Hispanic) (0.832%), and Two+ (Hispanic) (0.62%).

None of the households in Mille Lacs County, MN reported speaking a non-English language at home as their primary shared language. This does not consider the potential multi-lingual nature of households, but only the primary self-reported language spoken by all members of the household. 99.4% of the residents in Mille Lacs County, MN are U.S. citizens.

In 2020, the median property value in Mille Lacs County, MN was \$170,500, and the homeownership rate was 75.8%.

Most people in Mille Lacs County, MN drove alone to work, and the average commute time was 30.6 minutes. The average car ownership in Mille Lacs County, MN was 2 cars per household.

Mille Lacs County, MN borders Aitkin County, MN, Benton County, MN, Crow Wing County, MN, Isanti County, MN, Kanabec County, MN, Morrison County, MN, and Sherburne County, MN.



Whether you are looking to buy, sell, lease, or rent, our agents will work hard to find you what you need. Our team becomes your team when you choose to do business with us.

At Caspian, we strive to provide the best service possible, and our group of talented brokers are enthusiastic about getting the best deal for our clients. Our brokers are specialized in retail, industrial, and office spaces and know the local market conditions needed to negotiate the best terms for our clients.

Our client relationships are the most important part of our business. Through consistent communication and updates, we ensure that our clients are always aware of what is going on and are in front of the transaction.



SEAN STARK | Director



sean@caspianrealty.com



651-353-1266