

Turnkey Medical Office For Lease

5726
La Jolla
Blvd



La Jolla | ±1,500 SF

Office.Medical.Retail Space

in the Coastal Enclave of Bird Rock, La Jolla

Address : 5726 La Jolla Blvd

Space Use : Office/Medical/Retail

Available Space : ±1,500 SF

Lease Rate : \$3.35 PSF + NNN



The Space

Turnkey medical office opportunity in coastal enclave of Bird Rock, La Jolla

Additional Uses

Flexible layout supports additional uses, including retail or office

Space Features

Space features 5 treatment rooms, private offices, reception/entrance areas, and a restroom

Parking

Dedicated parking behind premises and in parking garage

Neighbors

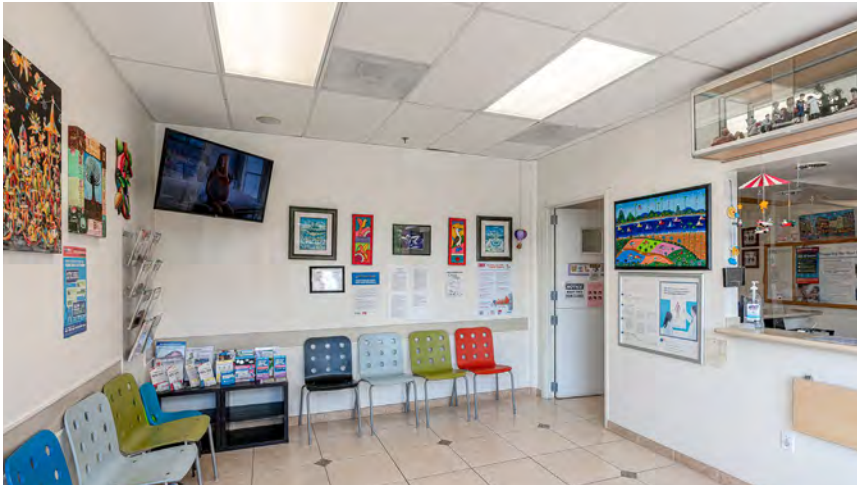
Neighbors include Waylon, The Sugaring Place, Sola Salons, Sharpe Fit, Wheat & Water, and many more!

Prime Location

Unmatched location with strong daytime demographics, affluent residential base, premier retail & dining, and year-round tourism

Space

Photos



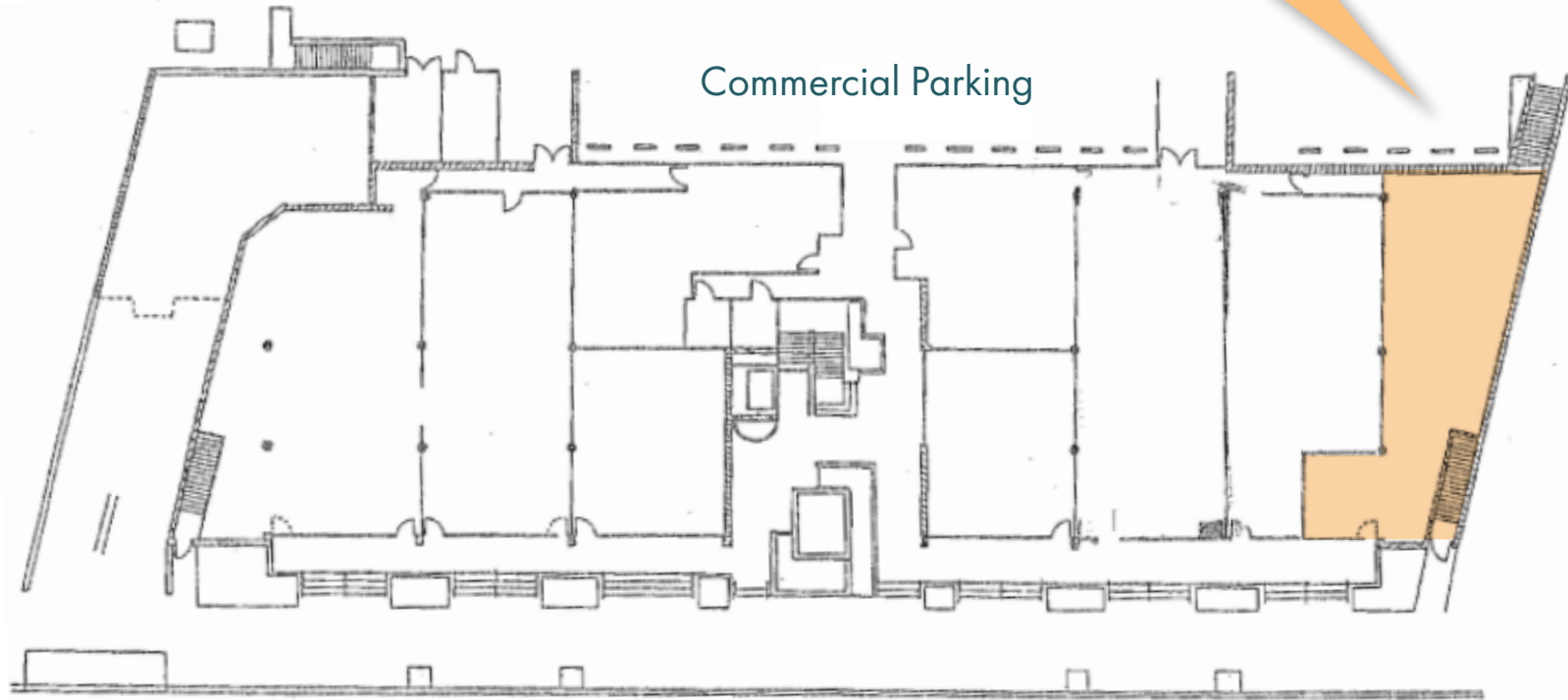
Available

Space

Suite 107

±1,500 SF | Available Now

Commercial Parking

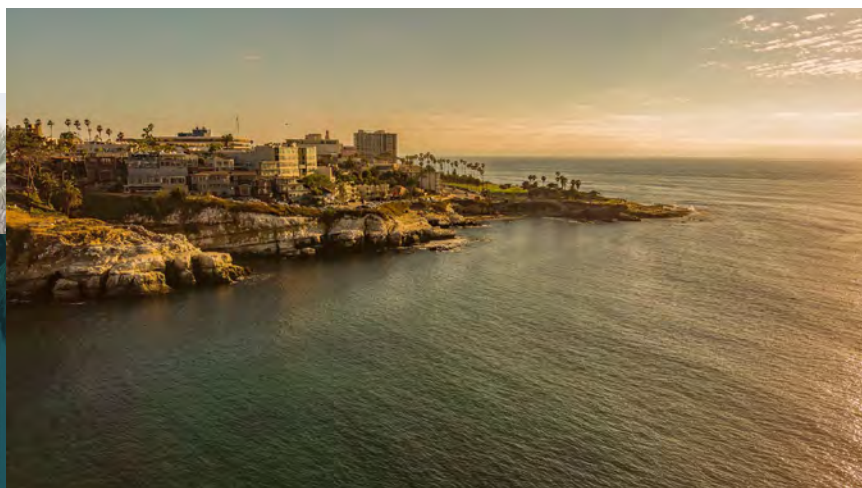
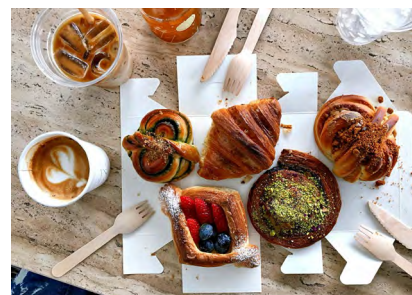


La Jolla Blvd

Feel the

Bird Rock Energy

Bird Rock is a hidden coastal gem where surf culture meets an elevated food and craft-coffee scene. Just minutes from La Jolla Village, this micro-neighborhood centers around a walkable four-block stretch of La Jolla Boulevard with its own distinct vibe. By day, coffee aficionados, pastry lovers, and surfers fill the streets; by evening, local restaurants and wine bars draw steady crowds. With the beach and some of San Diego's most scenic lookout points steps away, Bird Rock blends relaxed coastal living with a refined neighborhood energy.



The

Demographics

Bird Rock is an affluent, well-established coastal enclave with a distinct demographic profile. The neighborhood stands well above national benchmarks in education and income, with a predominantly owner-occupied housing base, a strong mature-adult presence, and a tight-knit coastal village character that defines its appeal.



	1 Mile	2 Mile	3 Mile
Population (2024)	11,254	38,200	78,108
Project Population (2029)	11,384	38,694	79,181
Total Daytime Employment	2,407	17,256	40,538
Total Households	4,854	17,423	36,569
Avg. Household Income	\$169,759	\$157,549	\$144,619
Total Consumer Spending	\$219.4M	\$736M	\$1.4B

La Jolla

By the Numbers

Beyond its coastal beauty, La Jolla thrives on strong economic fundamentals. With more than **30 walkable village blocks** and **20+ annual events**, the area attracts a high-spending visitor base and maintains some of San Diego's strongest tourism performance. A wealthy residential population, steady year-round travel, and a robust calendar of cultural attractions all reinforce La Jolla's standing as one of the region's most vibrant and economically powerful coastal destinations.



266

Sunny Days



1,200+

Merchants



100+

Restaurants to Try



2,800+

Hotel Rooms

Discover

La Jolla

La Jolla pairs its dramatic coastline with the charm of a vibrant seaside village, offering an experience that feels both elegant and effortlessly relaxed. The area is defined by its blend of natural beauty, cultural institutions, boutique retail, and destination dining—all set within a walkable, community-oriented environment. From coastal trails and coves to galleries, cafés, and year-round attractions, La Jolla draws a diverse mix of residents and visitors who come for its lifestyle, scenery, and enduring sense of place.



Dine

La Jolla's dining scene blends oceanfront elegance with neighborhood charm, offering everything from chef-driven restaurants to casual cafés and gourmet grab-and-go options throughout the Village.

Play

Explore La Jolla's coastal trails, beaches, galleries, boutiques, and lively event calendar—where outdoor adventure, cultural experiences, and local shopping create endless ways to spend the day.

Stay

With boutique hotels, historic icons, and luxury oceanfront resorts, La Jolla offers a range of inviting places to unwind, each providing easy access to the Village and the community's signature coastal beauty.

Turnkey Medical Office For Lease

Cam Lacey

cam@upgsocal.com

Lic No 01955796

