



Tenant Signage

±2,598 SF

236 Castro Street

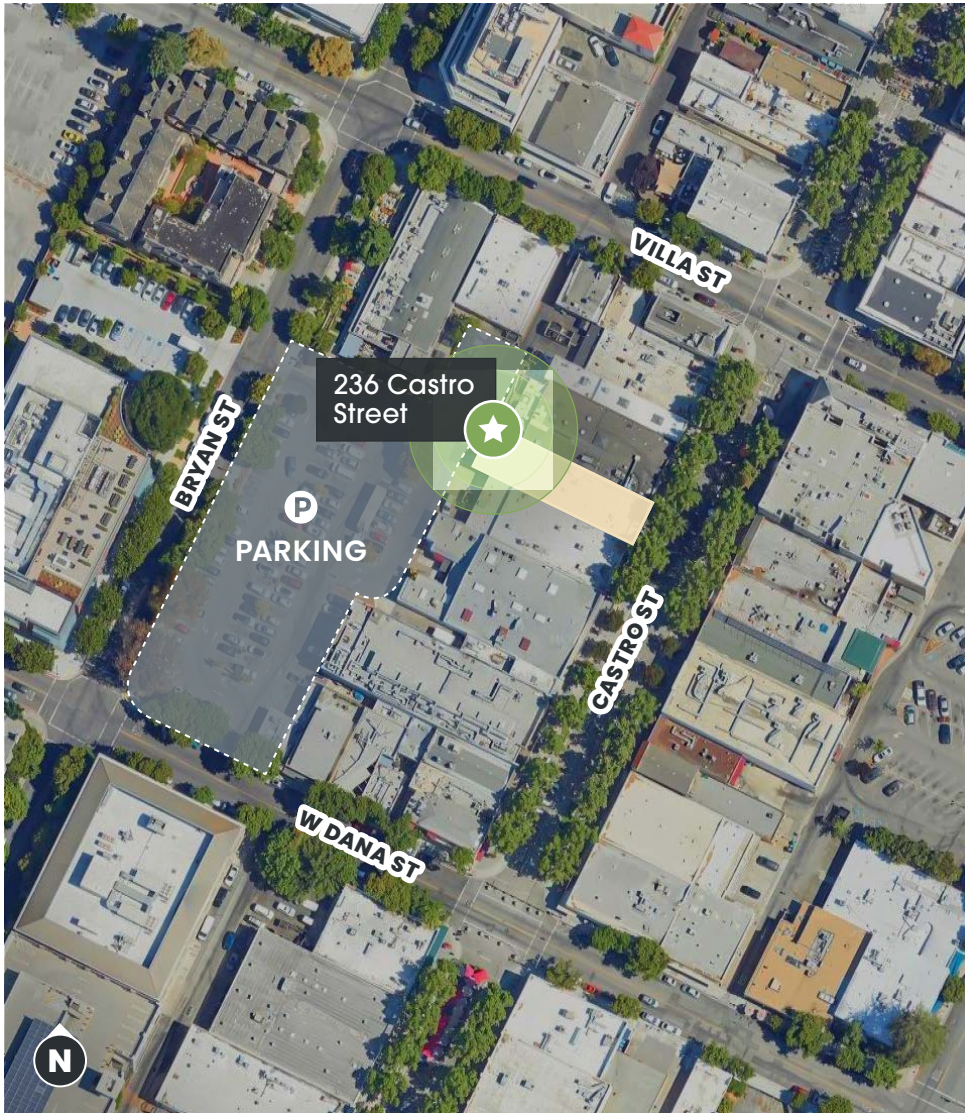
Mountain View, CA 94041

Retail Space Available **FOR LEASE**

 the eonic company®

PROPERTY
HIGHLIGHTS

236 Castro Street
Mountain View, CA



Central position in downtown Mountain View



2nd generation restaurant space



Direct access to public parking



Façade upgrade in progress



Affluent demographics and dense daytime population

DEMOGRAPHICS

	1 MILE	3 MILES	5 MILES
Population	34,472	164,051	358,999
Avg. Household Income	\$238,181	\$255,118	\$251,890
Daytime Population	41,607	212,316	419,664

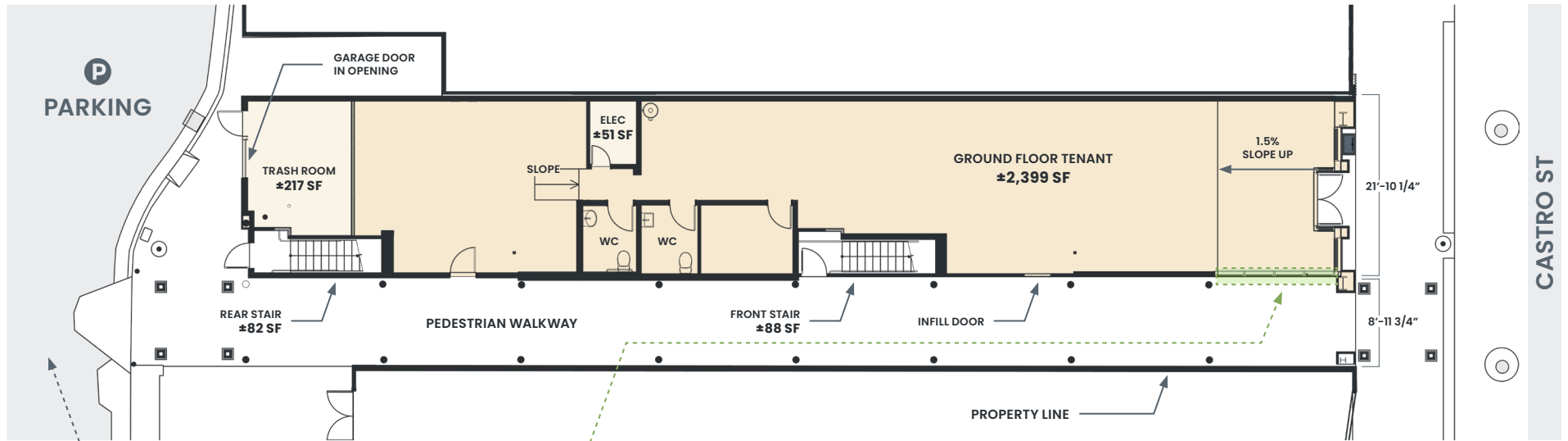
TRAFFIC COUNTS

Source: 2024 Esri.

Castro Street	9,000 ADT
Central Expressway	28,100 ADT
S Shoreline Blvd	26,800 ADT

PROPERTY
FLOOR PLAN

236 Castro Street
 Mountain View, CA



PEDESTRIAN WALKWAY
 CONNECTED TO CITY
 PARKING

GLAZING ALONG THE PEDESTRIAN
 WALKWAY FOR VISIBILITY FROM FOOT
 TRAFFIC COMING FROM THE PARKING LOT

LEGEND

NAME	AREA SF	LOAD	GROUND TENANT SF
Ground Floor Area	2,399		2,399.0
Trash Room	217	80%	173.6
Elec	51	50%	25.5
Front Stair	88		
Rear Stair	82		
Ground Floor Tenant Area Total			2,598.1





236 Castro Street

📍 Mountain View, CA 94041

MIKE CONROY

mconroy@theeoniccompany.com
408) 400-7061 | LIC. 02046912

JAMES CHUNG

jchung@theeoniccompany.com
(408) 400-7017 | LIC. 01408190



RON MILLER

ron.miller@cushwake.com
(650) 320-0207 | LIC. 01811036

