

RETAIL SPACE

2131 NOSTRAND AVENUE

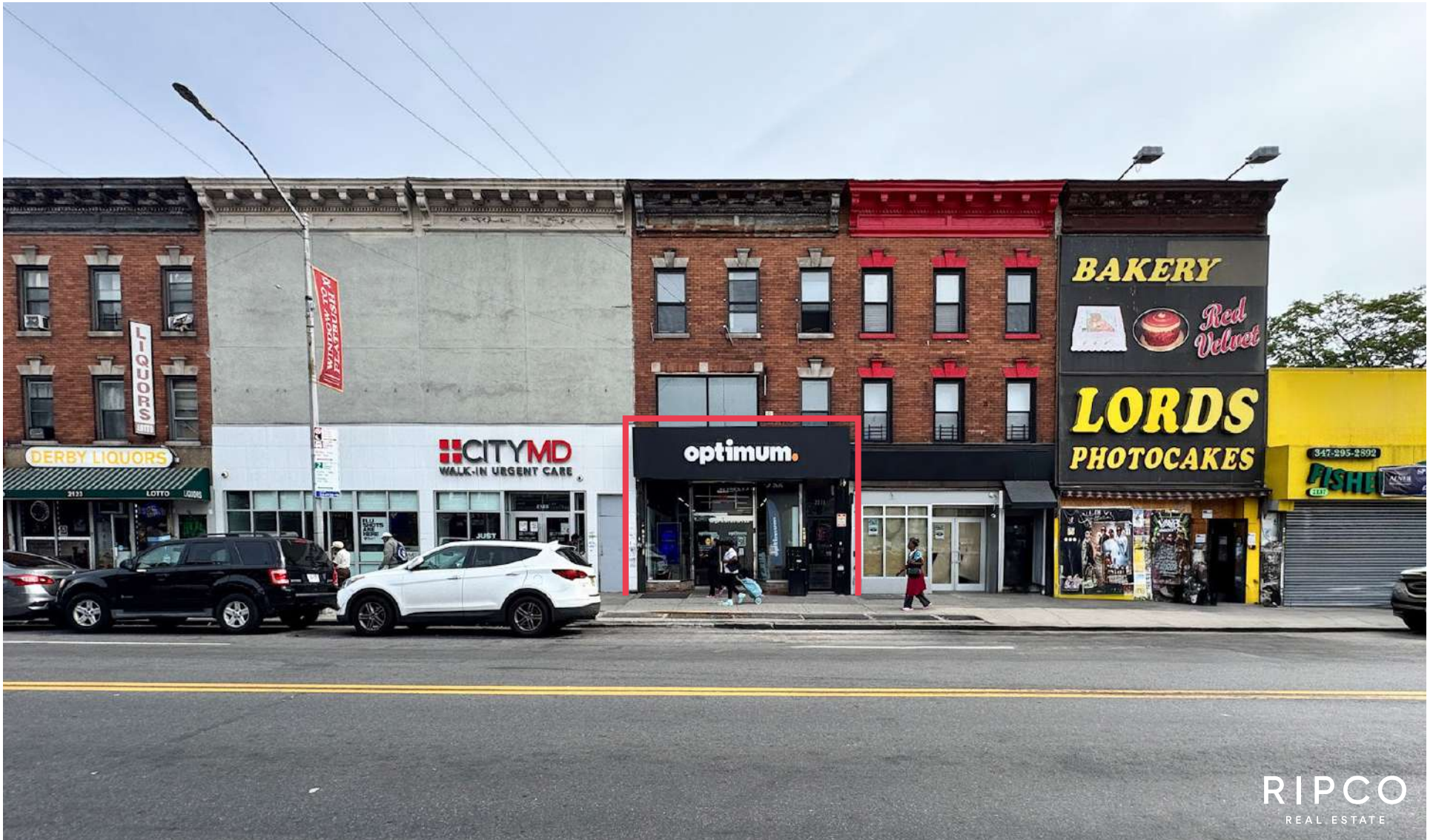
East block between Flatbush Avenue and Glenwood Road

BROOKLYN JUNCTION

BROOKLYN | NY

2,000 SF

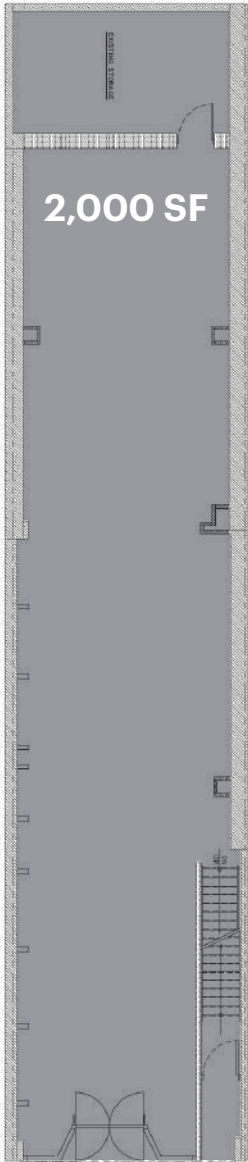
For Lease



RIPCO
REAL ESTATE

SPACE DETAILS

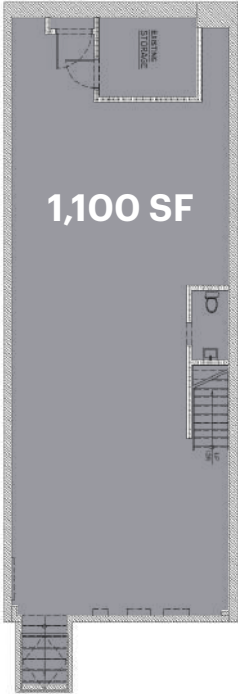
GROUND FLOOR



20 FT

NOSTRAND AVENUE

LOWER LEVEL



LOCATION

East block between Flatbush Avenue and Glenwood Road

SIZE

Ground Floor	2,000 SF
Lower Level	1,100 SF

FRONTAGE

Nostrand Avenue	20 FT
-----------------	-------

STATUS

Currently Optimum

POSSESSION

Arranged

RENT

Upon request

NEIGHBORS

Chick-fil-A, Foot Locker, CityMD, Target, HomeGoods, Aldi, Citizens Bank, Panda Express, Brooklyn College

COMMENTS

Street retail located at Brooklyn Junction

Restaurant / QSR uses can be accommodated with black-iron venting

Highly visible storefront and signage directly across from the MTA Subway 2 & 5 trains

TRANSPORTATION

2024 Ridership Report

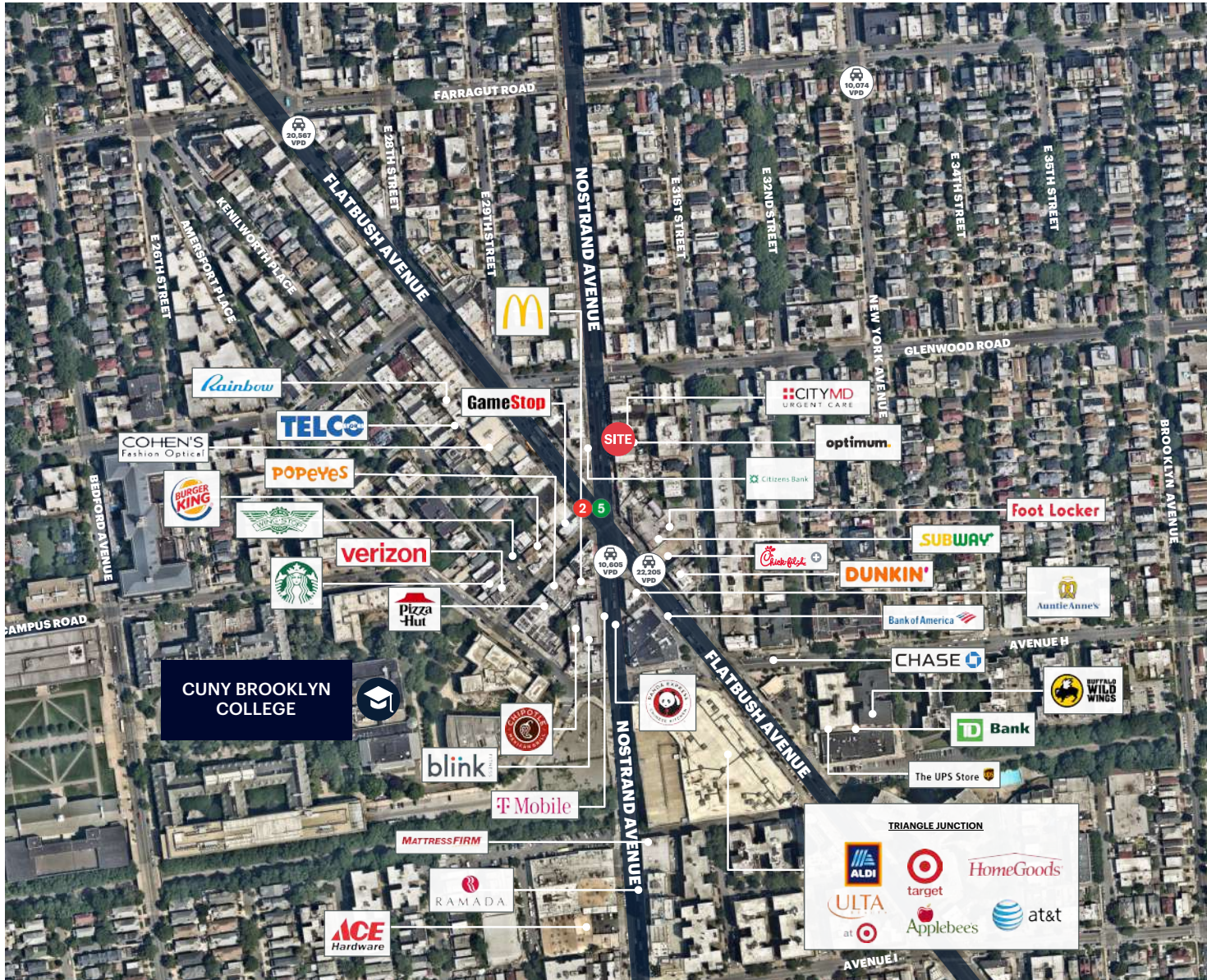
Flatbush Ave-Brooklyn College 2 5

Annual	3,662,300
Weekday	12,226
Weekend	9,917

ADDITIONAL PHOTOS



AREA RETAIL



CONTACT EXCLUSIVE AGENT

EVAN SCHUCKMAN
eschuckman@ripcony.com
212.750.0667

+ Coming Soon

RIPCO
REAL ESTATE

150 East 58th Street
15th Floor
New York, NY 10115
212.750.6565

Please visit us at ripcony.com for more information

This information has been secured from sources we believe to be reliable, but we make no representations as to the accuracy of the information. References to square footage are approximate. Buyer must verify the information and bears all risk for any inaccuracies.