

3310-3334 W. FLOWER ST

Phoenix, AZ 85017

WAREHOUSE SUITE FOR LEASE



PROPERTY DESCRIPTION

- A-2 Zoning
- Grade Level Doors (±10'x10')
- ±16' Clear Height
- Close to I-10 & I-17 Freeways
- Fire Sprinklered
- Great Semi Access

3324 W FLOWER ST - ±2,850 SF

- Reception/Open Office
- Three (3) Offices
- Break Room
- Restrooms
- Air-Conditioned Warehouse
- Grade Level Overhead Door

2150 East Highland Avenue, Suite 207, Phoenix, AZ 85016 // 602.955.3500 // cutlercommercial.com

ROD CROTTY

Associate Broker
602.386.1225(D)
rcrotty@cutlercommercial.com

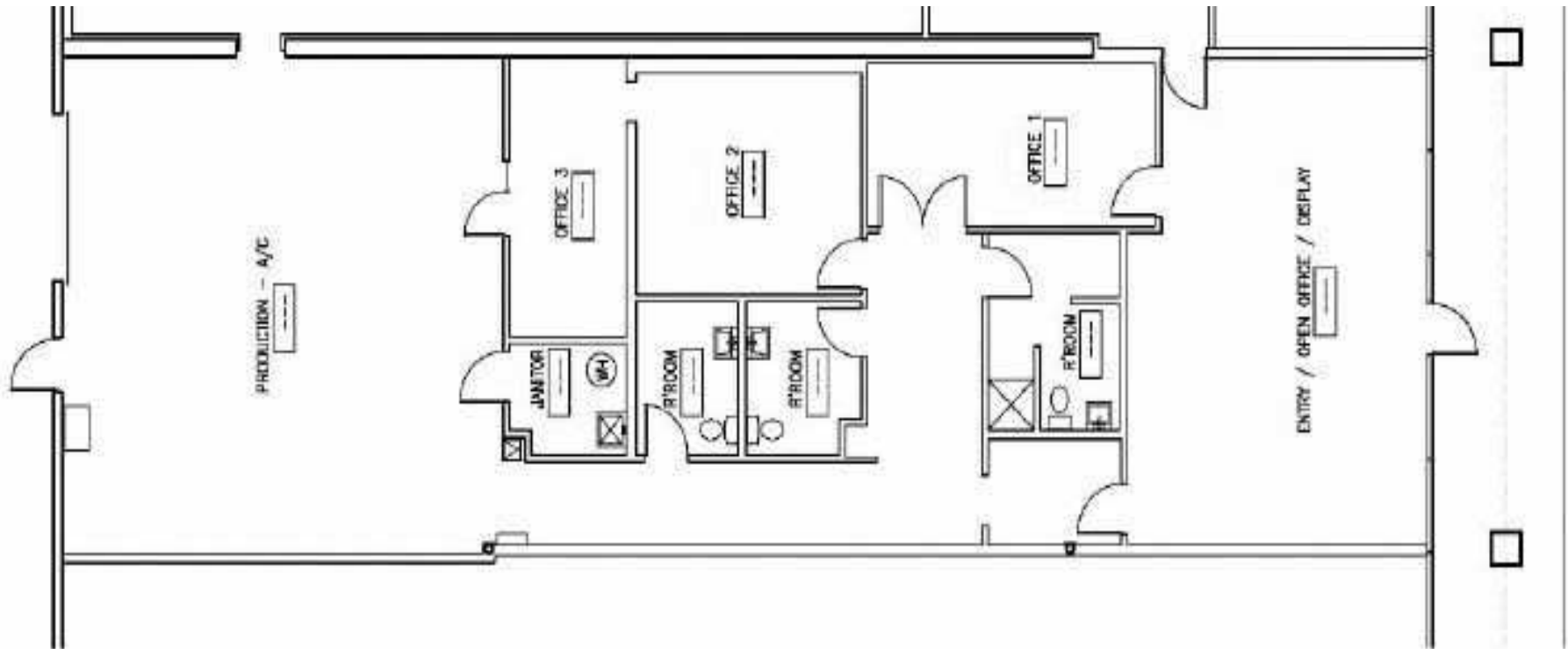


All information furnished is from sources deemed reliable. No representation is made as to the accuracy thereof and it is submitted subject to errors, omissions, changes, or withdrawal without notice and to any special listings conditions, including the rate and manner of payment of commissions for particular offerings imposed by principals or agreed to by the company, the terms of which are available to interested principals or brokers. All dimensions are approximate. Owner and/or Broker make no representations expressed or implied as to the accuracy of floor plan/site plan dimensions.

3310-3334 W. FLOWER ST

Phoenix, AZ 85017

WAREHOUSE SUITE FOR LEASE



2150 East Highland Avenue, Suite 207, Phoenix, AZ 85016 // 602.955.3500 // cutlercommercial.com

ROD CROTTY

Associate Broker

602.386.1225(D)

rcrotty@cutlercommercial.com



All information furnished is from sources deemed reliable. No representation is made as to the accuracy thereof and it is submitted subject to errors, omissions, changes, or withdrawal without notice and to any special listings conditions, including the rate and manner of payment of commissions for particular offerings imposed by principals or agreed to by the company, the terms of which are available to interested principals or brokers. All dimensions are approximate. Owner and/or Broker make no representations expressed or implied as to the accuracy of floor plan/site plan dimensions.