

RETAIL PROPERTY FOR SALE

48 ROUTE 6 YORKTOWN HEIGHTS, NY



- 20,000+ DAILY TRAFFIC COUNT
- FLOOR TO CEILING WINDOWS WITH TONS OF NATURAL LIGHT
- HIGH/VAULTED CEILINGS IN SOME UNITS
- EASILY ACCESSIBLE FROM TACONIC STATE PARKWAY, SOMERS, YORKTOWN AND MAHOPAC

- TOTAL SIZE 10,757 SF
- ADA COMPLIANT
- 68 PARKING SPACES
- 24 HOUR SECURITY SYSTEM
- BUILT IN 1990
- ZONING NS

Gary Margolis & Keri Kenny

Coldwell Banker Realty

(845) 729-4848 | gary.margolis@cbrealty.com

(203) 524-8120 | keri.kenny@cbrealty.com

10 McMahon Place Mahopac, NY 10541



COLDWELL BANKER REALTY

Suite 101 A: (1,835 sf) Vacant -
 Pro forma @ \$32/sf + \$3/sq CAM (\$35/sf total)

Suite 101 B: (1,124sf) AllState- \$28,092 annually | \$2,341/mo
 2 year lease with 3% increase. Lease start date 3/1/26. 2 year option to renew.

Suite 102: (1,802 sf) Vacant-
 Pro forma @ \$32/sf + \$3/sq CAM (\$35/sf total)

Suite 103: (2,307 sf) Vacant-
 Pro forma @ \$32/sf + \$3/sq CAM (\$35/sf total)

Suite 104: (1,409sf) Soaring Eagle PT Owner Occupied - Will Sign Long Lease
Suite 105: (740 sf) : Leasing space from Soaring Eagle PT

Downstairs Garage: \$7,800 annually | \$650/mo
 MTM Lease. Will sign lease if requested

2025 ANNUAL EXPENSES

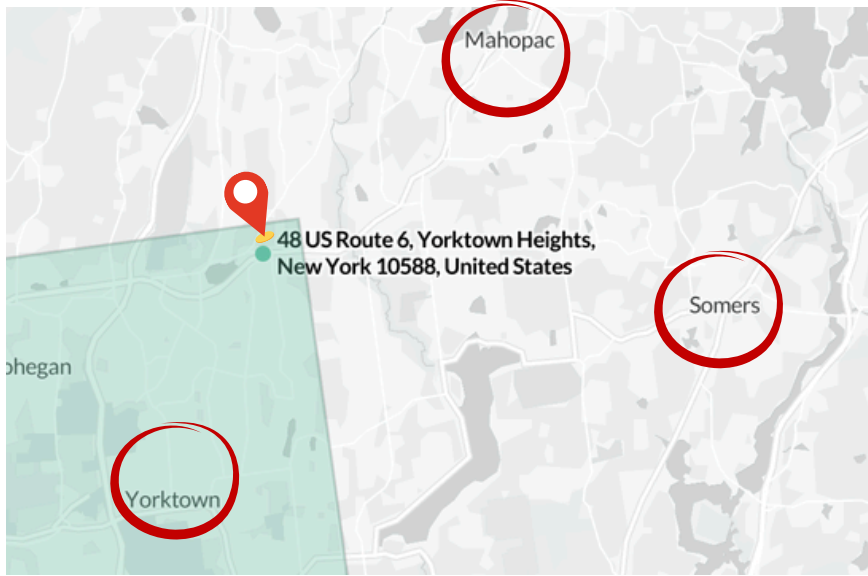
- Landscaping & Lawn Care (Bartollini). \$9,344.82**
- Snow Removal (Bartollini). \$13,395.18**
- Heating & Fuel & Boiler Report/maintenance(Action Fuel). \$9,125.86**
- Cleaning Services (IMS). \$10,141.68**
- Air Conditioning & Heating Repairs (ABM, Sunshine, Carl). \$9,317.17**
- Security Services & Fire Control Permit (open systems, fire control company). \$1,994.40**
- Water Monitoring System (Cemco) \$13,360.68**
- Telephone System (Verizon). \$340**
- Taxes: \$58,000**
- Insurance \$5,083.80**

Expenses: \$130,100

Zoning NS Principle Uses:

- A. Retail stores.**
- B. Personal service establishments.**
- C. Restaurants, excluding fast-food establishments and drive-in or curbside service.**
- D. Banks.**
- E. Medical, dental, veterinary, professional and business offices.**
- F. Child/adult day-care facilities.**
- G. Residential apartments over stores.**
- H. Any other nonresidential use as permitted and regulated in a Residence R40 District.**
- I. Mixed commercial and affordable residential development projects, where commercial space and residential units may be located in separate buildings, subject to compliance with the provisions of § 170-20.4C.**
- J. Municipal facilities.**

Location & Demographics



Property Specs

- Medical /Office Building
- Private Parking lot (68 spots)
- 4 Tenant Building
- Lot Size 1.64 Acres
- Zoning Code NS
- Borders Yorktown, Somers, Mahopac (Hamlet of Carmel)

Yorktown town, Westchester County, NY

County Subdivision in: [Westchester County, NY, New York, United States](#)

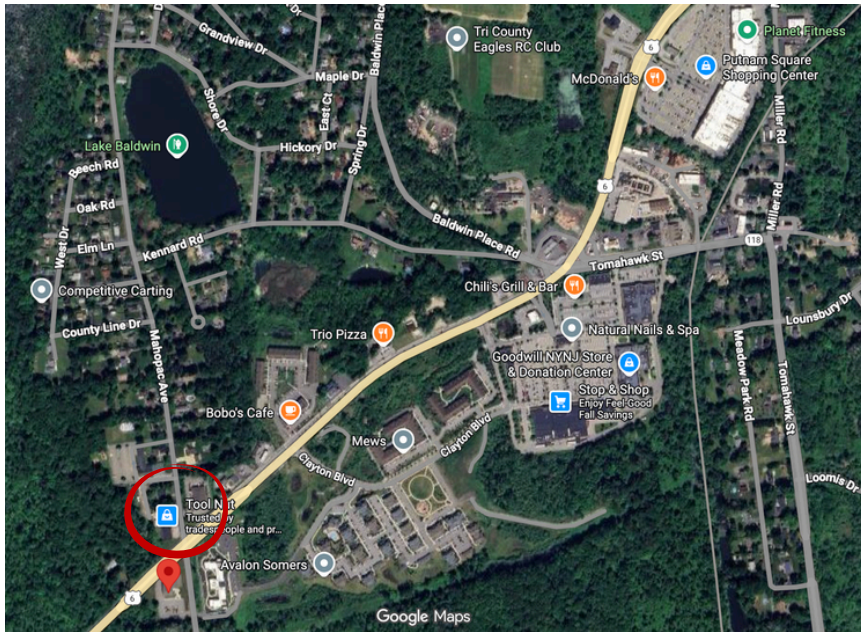
35,969

Population

36.8 square miles

978.5 people per square mile

Census data: ACS 2023 5-year unless noted



Somers town, Westchester County, NY

County Subdivision in: [Westchester County, NY, New York, United States](#)

21,275

Population

29.8 square miles

714.1 people per square mile

Census data: ACS 2023 5-year unless noted

Carmel town, Putnam County, NY

County Subdivision in: [Putnam County, NY, New York, United States](#)

33,761

Population

35.9 square miles

940.8 people per square mile

Census data: ACS 2023 5-year unless noted

NEAR BY TENANTS

- Avalon Somers .3 miles
- Bobos Cafe .3 miles
- Chilis .9 miles
- Stop n Shop .8 miles
- McDonalds 1.1 miles

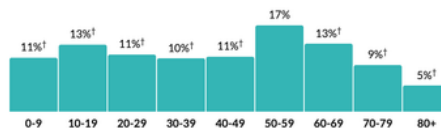
Age

44.4

Median age

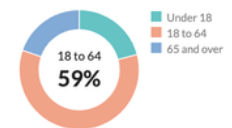
about 10 percent higher than the figure in Westchester County: 41.5
about 10 percent higher than the figure in New York: 39.6

Population by age range



Show data / Embed

Population by age category



Show data / Embed

Get in Touch

Gary Margolis (845) 729-4848
Keri Kenny (203) 524-8120

gary.margolis@cbrealty.com
keri.kenny@cbrealty.com

10 McMahan Pl,
Mahopac, NY 10541