

ALL PROPERTIES ARE OWNER MANAGED AND
STRATEGICALLY LOCATED MINUTES FROM A MAJOR INTERSTATE
IN THE EAST BAY AND CENTRAL VALLEY.

Right Space. Best Place.

www.cranbrookgroup.com

AIRPORT CORPORATE CENTRE

[7677 Oakport Street, Oakland, CA 94621](#)



SEE & LEARN MORE ...

Go to cranbrookgroup.com to view more photos and get more information about Airport Corporate Centre and Team Cranbrook!

Easily recognizable from Interstate 880 and standing tall against the Oakland skyline, Airport Corporate Centre is an impressive 12-story, Class A office building offering an abundance of natural light.

As an owner/operator, we are proud to offer Class A office space that's as efficient as it is beautiful ... and a great place for your employees and guests.

With an unparalleled and coveted location situated adjacent to I-880, Airport Corporate Centre provides panoramic views of San Francisco, the Oakland Hills and the Oakland Arena/Coliseum. The property offers exceptional visibility, a broad array of amenities and space solutions making Airport Corporate Centre the "Right Space. Best Place." for your business needs.

PROPERTY HIGHLIGHTS & AMENITIES

- Prominent Class A 12-Story High Rise with \pm 264,000 RSF
- Flexible \pm 22,500 RSF Floor Plates
- On-site Property Management & Chief Engineer
- 24/7 On-site Security & Surveillance
- Secured Parking
- On-site Café and Fitness Center
- Executive Conference Room with Recently Upgraded Projector and Video Presentation Capabilities
- Free BART Shuttle Service
- Close Proximity to Oakland International Airport (OAK)
- Conveniently Located near Retail, Restaurants and Banks

SUSTAINABILITY FEATURES

- ENERGY STAR® Certified
- New Solar Carport Structures
- New EV Charging Stations (36 total)
- Energy Efficient Cooling Tower
- Recycling & Compost Programs



For more information, please contact:

Linda Shoemaker

Director of Leasing | Senior Property Manager
(925) 866-8070 ext. 414 | lshoemaker@cranbrookgroup.com
DRE # 01253655

The information contained herein is based on reliable data, measurements and calculations. We have no reason to doubt its accuracy, but we do not guarantee it. All information should be verified prior to purchase or lease.



Office | For Lease
Available Now

AIRPORT CORPORATE CENTRE

7677 Oakport Street, Oakland, CA 94621



Availabilities

Floor	Suite	RSF	Availability
1st Floor	105	± 2,416 RSF	Now
5th Floor	500	± 4,137 RSF	Now
5th Floor	520	± 4,026 RSF	Now
5th Floor	565	± 3,237 RSF	Now
8th Floor	870	± 2,714 RSF	Now
10th Floor	1005	± 2,180 RSF	Now
11th Floor	1140	± 4,138 RSF	Now
11th Floor	1150	± 4,494 RSF	Now
11th Floor	1160	± 2,568 RSF	Now
11th Floor (Contiguous Suites)	1140 + 1150	± 8,632 RSF	Now
11th Floor (Contiguous Suites)	1140 + 1160	± 6,706 RSF	Now
11th Floor (Contiguous Suites)	1140 + 1150 + 1160	± 11,200 RSF	Now

Linda Shoemaker

Director of Leasing | Senior Property Manager
(925) 866-8070 ext. 414 | lshoemaker@cranbrookgroup.com
DRE # 01253655



The information contained herein is based on reliable data, measurements and calculations. We have no reason to doubt its accuracy, but we do not guarantee it. All information should be verified prior to purchase or lease.

ALL PROPERTIES ARE OWNER MANAGED AND
STRATEGICALLY LOCATED MINUTES FROM A MAJOR INTERSTATE
IN THE EAST BAY AND CENTRAL VALLEY.

Right Space. Best Place.

www.cranbrookgroup.com

AIRPORT CORPORATE CENTRE

[7677 Oakport Street, Oakland, CA 94621](#)

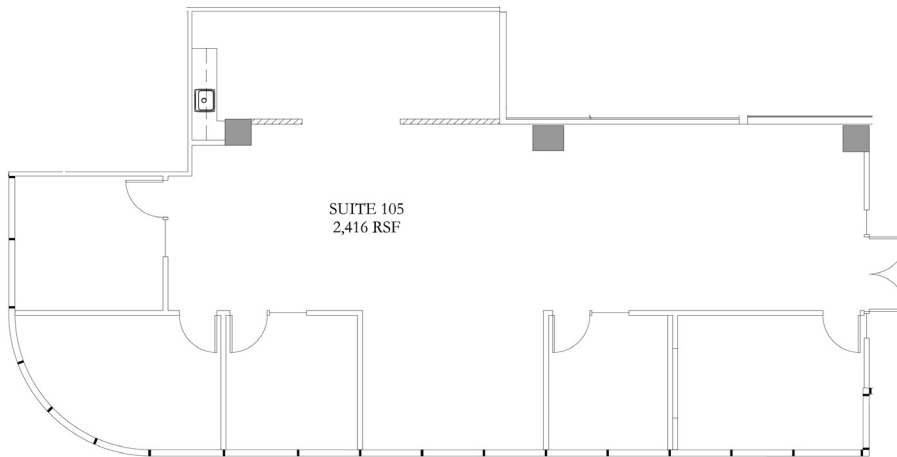


SEE & LEARN MORE ...

Go to cranbrookgroup.com to view more photos and get more information about Airport Corporate Centre and Team Cranbrook!

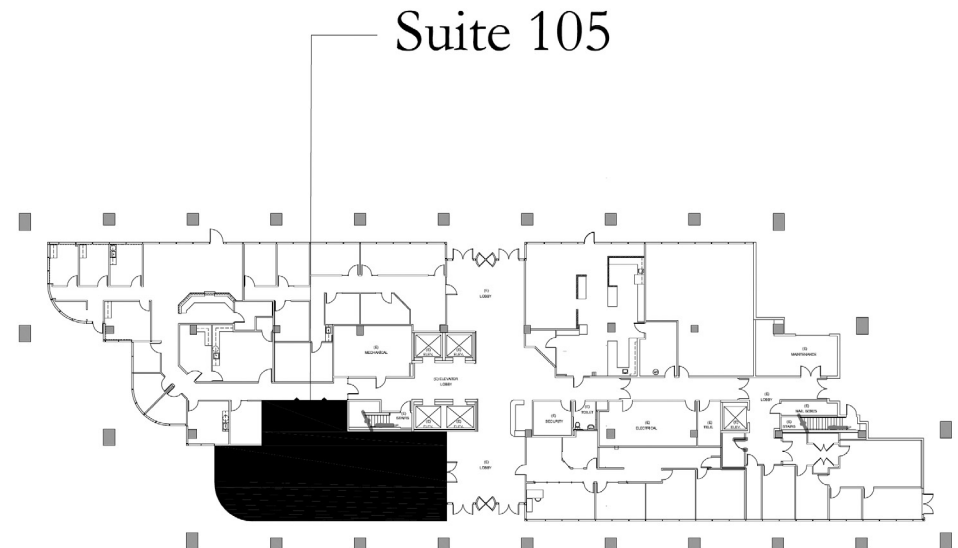
SUITE 105

± 2,416 RENTABLE SQUARE FEET



FIRST FLOOR KEY PLAN

AVAILABLE SUITE IN BLACK BELOW



For more information, please contact:

Linda Shoemaker

Director of Leasing | Senior Property Manager
(925) 866-8070 ext. 414 | lshoemaker@cranbrookgroup.com
DRE # 01253655

The information contained herein is based on reliable data, measurements and calculations. We have no reason to doubt its accuracy, but we do not guarantee it. All information should be verified prior to purchase or lease.



ALL PROPERTIES ARE OWNER MANAGED AND
STRATEGICALLY LOCATED MINUTES FROM A MAJOR INTERSTATE
IN THE EAST BAY AND CENTRAL VALLEY.

Right Space. Best Place.

www.cranbrookgroup.com

AIRPORT CORPORATE CENTRE

[7677 Oakport Street, Oakland, CA 94621](#)

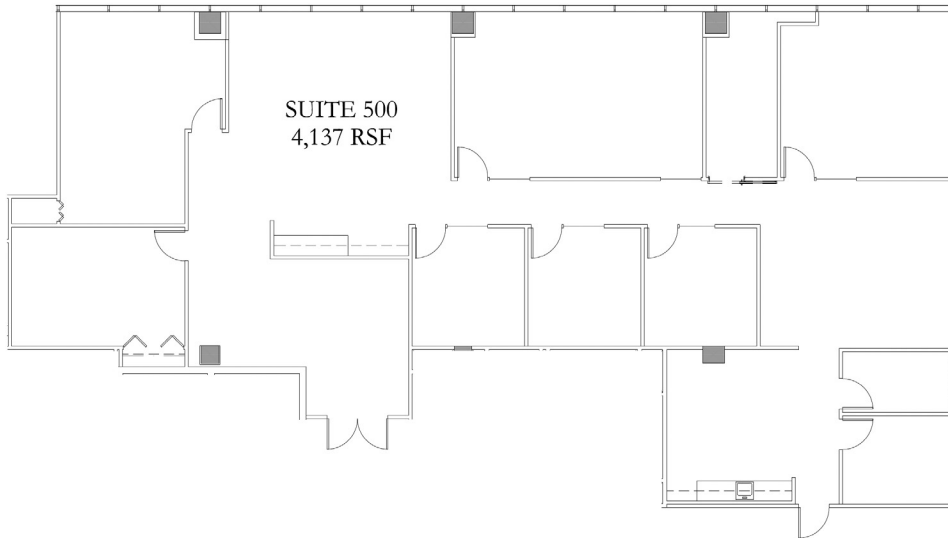


SEE & LEARN MORE ...

Go to cranbrookgroup.com to view more photos and get more information about Airport Corporate Centre and Team Cranbrook!

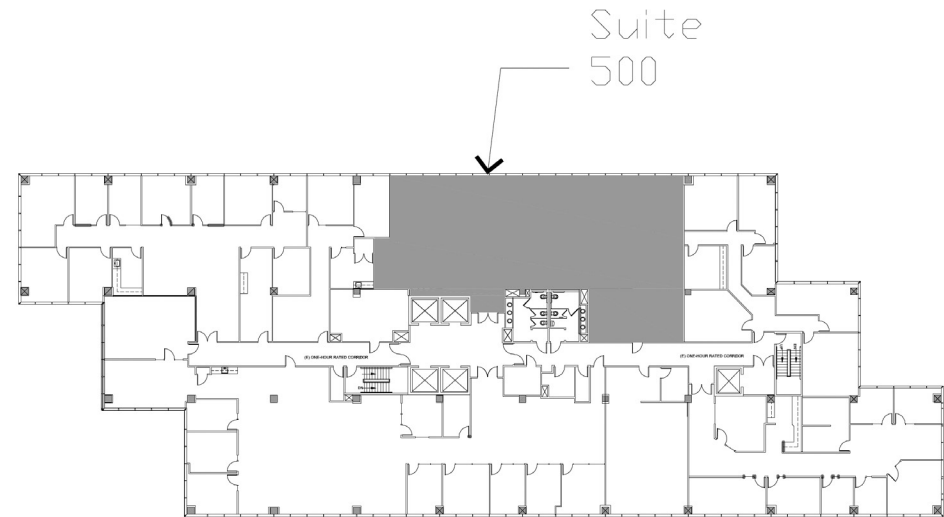
SUITE 500

± 4,137 RENTABLE SQUARE FEET



FIFTH FLOOR KEY PLAN

AVAILABLE SUITE IN GRAY BELOW



For more information, please contact:

Linda Shoemaker

Director of Leasing | Senior Property Manager
(925) 866-8070 ext. 414 | lshoemaker@cranbrookgroup.com
DRE # 01253655

The information contained herein is based on reliable data, measurements and calculations. We have no reason to doubt its accuracy, but we do not guarantee it. All information should be verified prior to purchase or lease.



ALL PROPERTIES ARE OWNER MANAGED AND
STRATEGICALLY LOCATED MINUTES FROM A MAJOR INTERSTATE
IN THE EAST BAY AND CENTRAL VALLEY.

Right Space. Best Place.

www.cranbrookgroup.com

AIRPORT CORPORATE CENTRE

[7677 Oakport Street, Oakland, CA 94621](#)

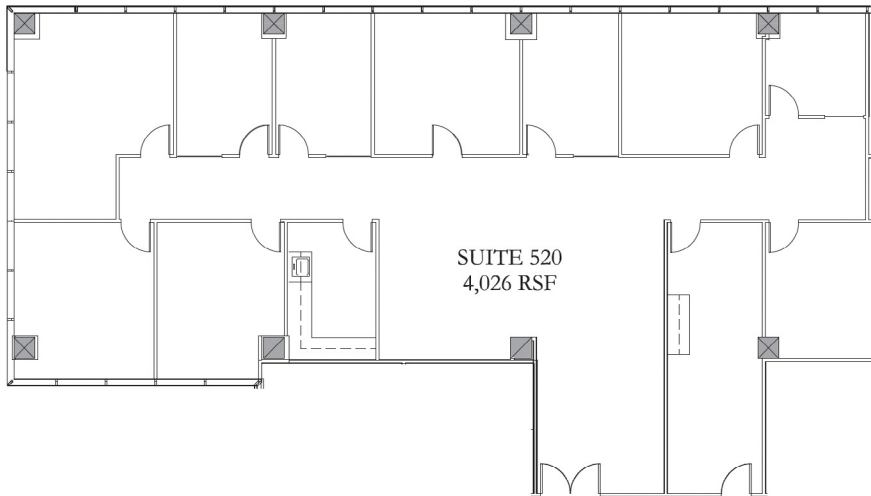


SEE & LEARN MORE ...

Go to cranbrookgroup.com to view more photos and get more information about Airport Corporate Centre and Team Cranbrook!

SUITE 520

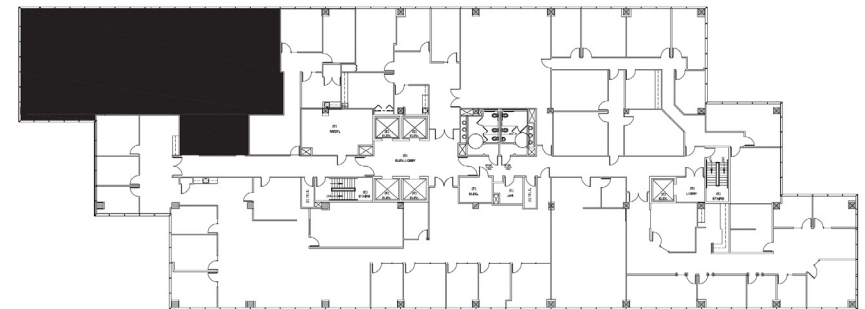
± 4,026 RENTABLE SQUARE FEET



FIFTH FLOOR KEY PLAN

AVAILABLE SUITE IN BLACK BELOW

Suite 520



For more information, please contact:

Linda Shoemaker

Director of Leasing | Senior Property Manager
(925) 866-8070 ext. 414 | lshoemaker@cranbrookgroup.com
DRE # 01253655

The information contained herein is based on reliable data, measurements and calculations. We have no reason to doubt its accuracy, but we do not guarantee it. All information should be verified prior to purchase or lease.



ALL PROPERTIES ARE OWNER MANAGED AND
STRATEGICALLY LOCATED MINUTES FROM A MAJOR INTERSTATE
IN THE EAST BAY AND CENTRAL VALLEY.

Right Space. Best Place.

www.cranbrookgroup.com

AIRPORT CORPORATE CENTRE

[7677 Oakport Street, Oakland, CA 94621](#)

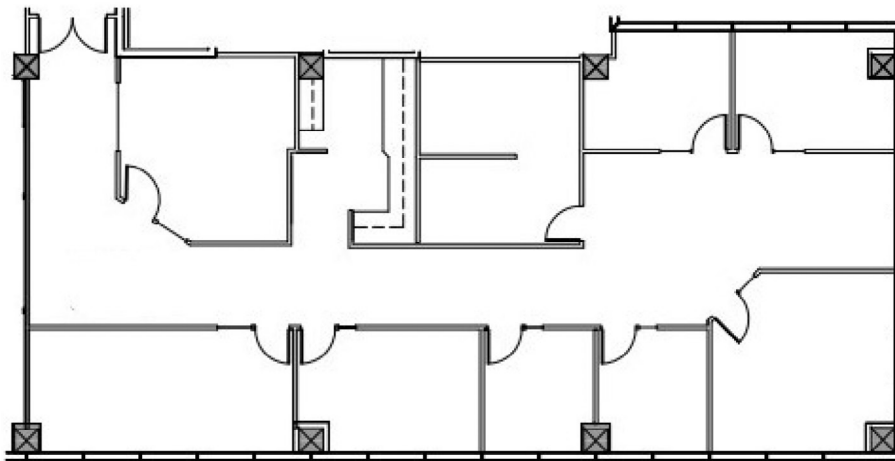


SEE & LEARN MORE ...

Go to cranbrookgroup.com to view more photos and get more information about Airport Corporate Centre and Team Cranbrook!

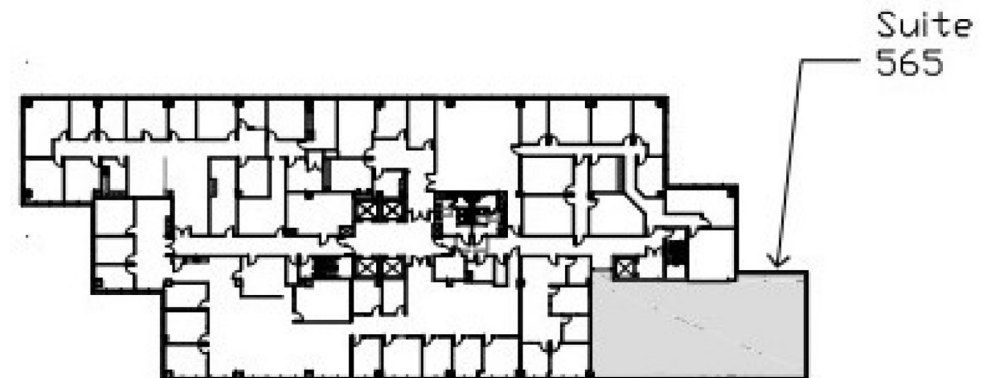
SUITE 565

± 3,237 RENTABLE SQUARE FEET



FIFTH FLOOR KEY PLAN

AVAILABLE SUITE IN GRAY BELOW



For more information, please contact:

Linda Shoemaker

Director of Leasing | Senior Property Manager
(925) 866-8070 ext. 414 | lshoemaker@cranbrookgroup.com
DRE # 01253655

The information contained herein is based on reliable data, measurements and calculations. We have no reason to doubt its accuracy, but we do not guarantee it. All information should be verified prior to purchase or lease.



ALL PROPERTIES ARE OWNER MANAGED AND
STRATEGICALLY LOCATED MINUTES FROM A MAJOR INTERSTATE
IN THE EAST BAY AND CENTRAL VALLEY.

Right Space. Best Place.

www.cranbrookgroup.com

AIRPORT CORPORATE CENTRE

[7677 Oakport Street, Oakland, CA 94621](#)

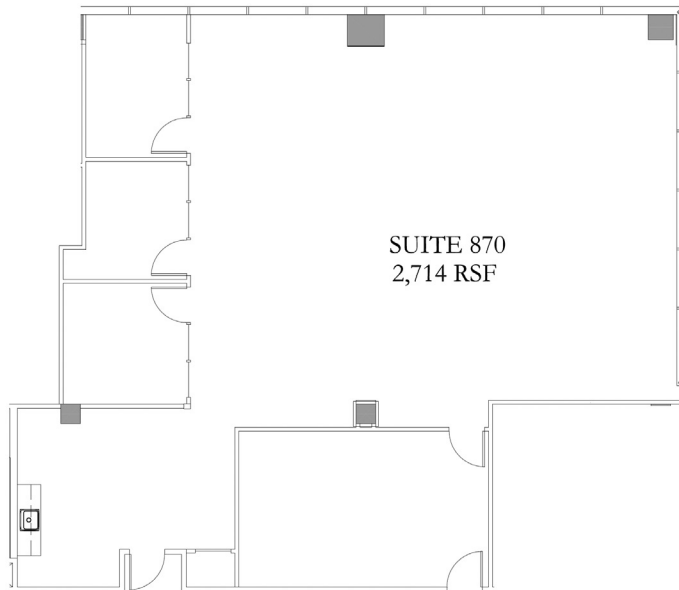


SEE & LEARN MORE ...

Go to cranbrookgroup.com to view more photos and get more information about Airport Corporate Centre and Team Cranbrook!

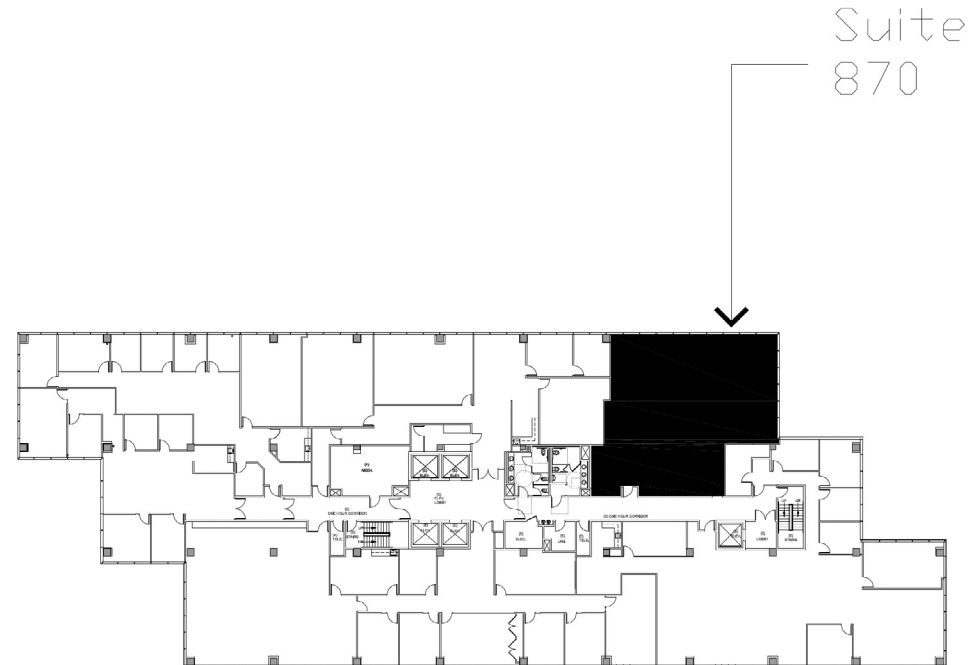
SUITE 870

± 2,714 RENTABLE SQUARE FEET



EIGHTH FLOOR KEY PLAN

AVAILABLE SUITE IN BLACK BELOW



For more information, please contact:

Linda Shoemaker

Director of Leasing | Senior Property Manager
(925) 866-8070 ext. 414 | lshoemaker@cranbrookgroup.com
DRE # 01253655

The information contained herein is based on reliable data, measurements and calculations. We have no reason to doubt its accuracy, but we do not guarantee it. All information should be verified prior to purchase or lease.



ALL PROPERTIES ARE OWNER MANAGED AND
STRATEGICALLY LOCATED MINUTES FROM A MAJOR INTERSTATE
IN THE EAST BAY AND CENTRAL VALLEY.

Right Space. Best Place.

www.cranbrookgroup.com

AIRPORT CORPORATE CENTRE

[7677 Oakport Street, Oakland, CA 94621](#)

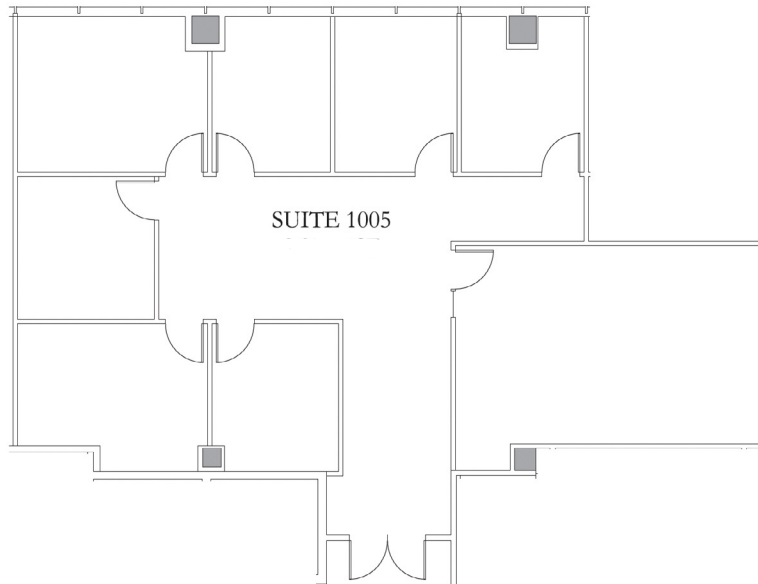


SEE & LEARN MORE ...

Go to cranbrookgroup.com to view more photos and get more information about Airport Corporate Centre and Team Cranbrook!

SUITE 1005

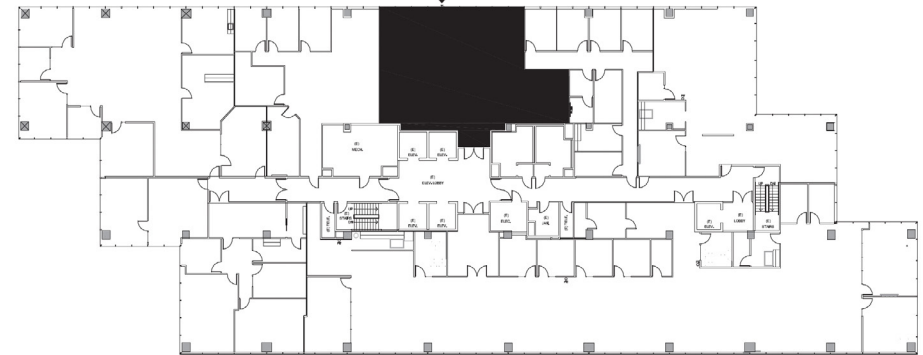
± 2,180 RENTABLE SQUARE FEET



TENTH FLOOR KEY PLAN

AVAILABLE SUITE IN BLACK BELOW

Suite 1005



For more information, please contact:

Linda Shoemaker

Director of Leasing | Senior Property Manager
(925) 866-8070 ext. 414 | lshoemaker@cranbrookgroup.com
DRE # 01253655

The information contained herein is based on reliable data, measurements and calculations. We have no reason to doubt its accuracy, but we do not guarantee it. All information should be verified prior to purchase or lease.



ALL PROPERTIES ARE OWNER MANAGED AND
STRATEGICALLY LOCATED MINUTES FROM A MAJOR INTERSTATE
IN THE EAST BAY AND CENTRAL VALLEY.

Right Space. Best Place.

www.cranbrookgroup.com

AIRPORT CORPORATE CENTRE

[7677 Oakport Street, Oakland, CA 94621](#)

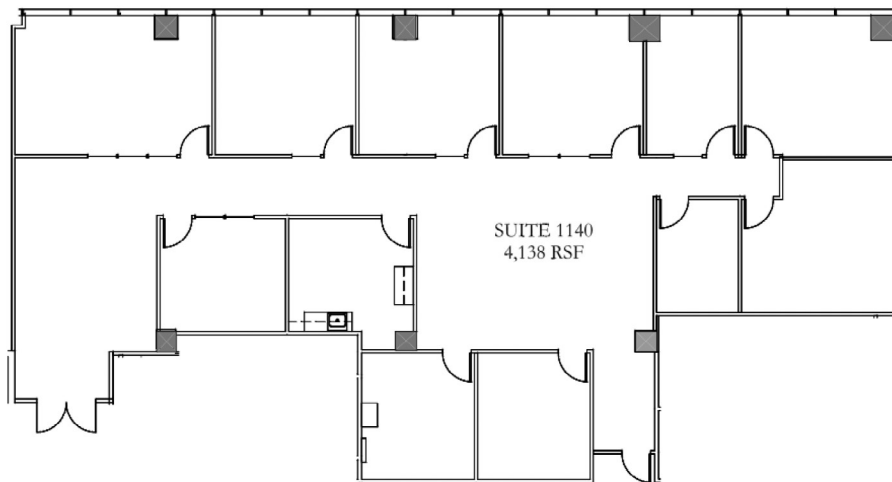


SEE & LEARN MORE ...

Go to cranbrookgroup.com to view more photos and get more information about Airport Corporate Centre and Team Cranbrook!

SUITE 1140

± 4,138 RENTABLE SQUARE FEET



ELEVENTH FLOOR KEY PLAN

AVAILABLE SUITE IN BLACK BELOW



For more information, please contact:

Linda Shoemaker

Director of Leasing | Senior Property Manager
(925) 866-8070 ext. 414 | lshoemaker@cranbrookgroup.com
DRE # 01253655

The information contained herein is based on reliable data, measurements and calculations. We have no reason to doubt its accuracy, but we do not guarantee it. All information should be verified prior to purchase or lease.



ALL PROPERTIES ARE OWNER MANAGED AND
STRATEGICALLY LOCATED MINUTES FROM A MAJOR INTERSTATE
IN THE EAST BAY AND CENTRAL VALLEY.

Right Space. Best Place.

www.cranbrookgroup.com

AIRPORT CORPORATE CENTRE

[7677 Oakport Street, Oakland, CA 94621](#)

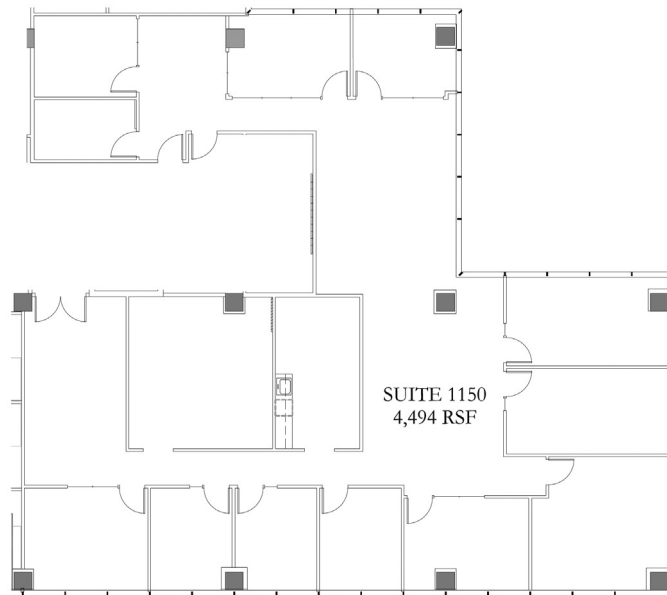


SEE & LEARN MORE ...

Go to cranbrookgroup.com to view more photos and get more information about Airport Corporate Centre and Team Cranbrook!

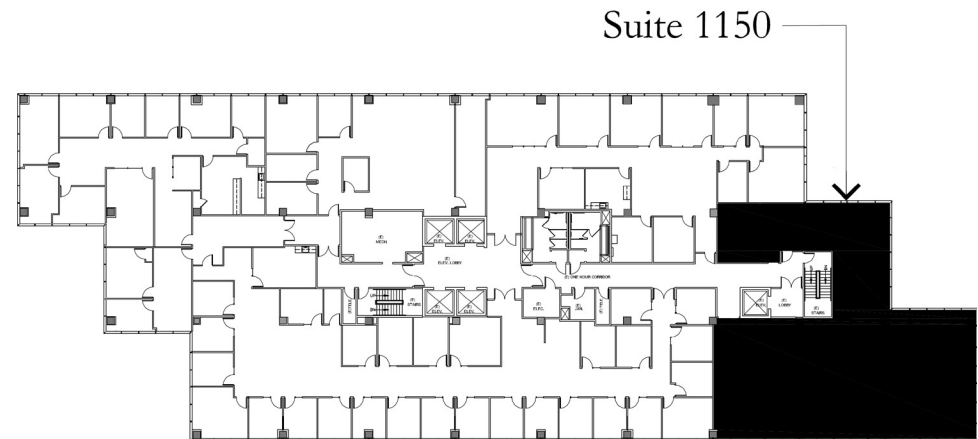
SUITE 1150

± 4,494 RENTABLE SQUARE FEET



ELEVENTH FLOOR KEY PLAN

AVAILABLE SUITE IN BLACK BELOW



For more information, please contact:

Linda Shoemaker

Director of Leasing | Senior Property Manager

(925) 866-8070 ext. 414 | lshoemaker@cranbrookgroup.com

DRE # 01253655

The information contained herein is based on reliable data, measurements and calculations. We have no reason to doubt its accuracy, but we do not guarantee it. All information should be verified prior to purchase or lease.



ALL PROPERTIES ARE OWNER MANAGED AND
STRATEGICALLY LOCATED MINUTES FROM A MAJOR INTERSTATE
IN THE EAST BAY AND CENTRAL VALLEY.

Right Space. Best Place.

www.cranbrookgroup.com

AIRPORT CORPORATE CENTRE

[7677 Oakport Street, Oakland, CA 94621](#)

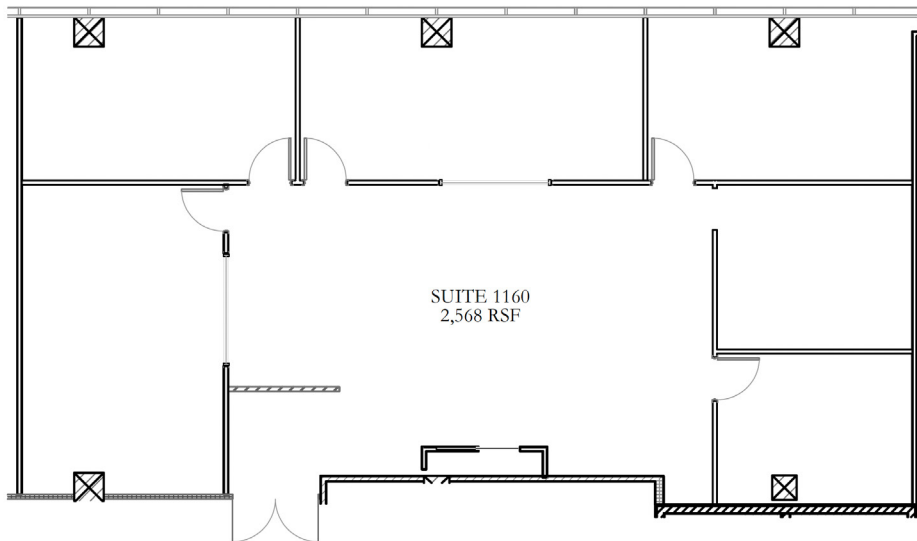


SEE & LEARN MORE ...

Go to cranbrookgroup.com to view more photos and get more information about Airport Corporate Centre and Team Cranbrook!

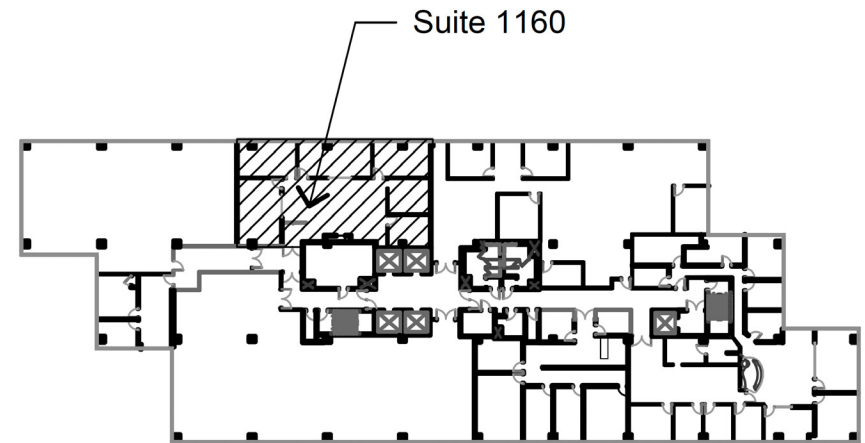
SUITE 1160

± 2,568 RENTABLE SQUARE FEET



ELEVENTH FLOOR KEY PLAN

AVAILABLE SUITE IN BLACK BELOW



For more information, please contact:

Linda Shoemaker

Director of Leasing | Senior Property Manager
(925) 866-8070 ext. 414 | lshoemaker@cranbrookgroup.com
DRE # 01253655

The information contained herein is based on reliable data, measurements and calculations. We have no reason to doubt its accuracy, but we do not guarantee it. All information should be verified prior to purchase or lease.



7677 Oakport Street, Oakland, CA 94621



Floor plan of the 11th floor showing Suite 1160 (2,568 RSF), Suite 1140 (4,138 RSF), and Suite 1150 (4,494 RSF). The plan includes various rooms, corridors, and a central stairwell area.



Director of Leasing | Senior Property Manager
(925) 866-8070 ext. 414 | lshoemaker@cranbrookgroup.com
DRE # 01253655

The information contained herein is based on reliable data, measurements and calculations. We have no reason to doubt its accuracy, but we do not guarantee it. All information should be verified prior to purchase or lease.