

GARDEN STATE PARKWAY 209,088 VPD



**NEWLY COMPLETED GRANDE AT METROPARK
FOUR BUILDINGS - 356 APARTMENTS**

**UP TO 2,120 SF
AVAILABLE**

**800 SF
AVAILABLE**



**4,600 SF
AVAILABLE**

3 RONSON ROAD **FOR LEASE 800 SF - 4,600 SF**

METROPARK, NEW JERSEY
THE GRANDE AT METROPARK

SHANE WIERKS
swierks@jefferyrealty.com
C: 908.581.7781
O: 908.668.9600 x209

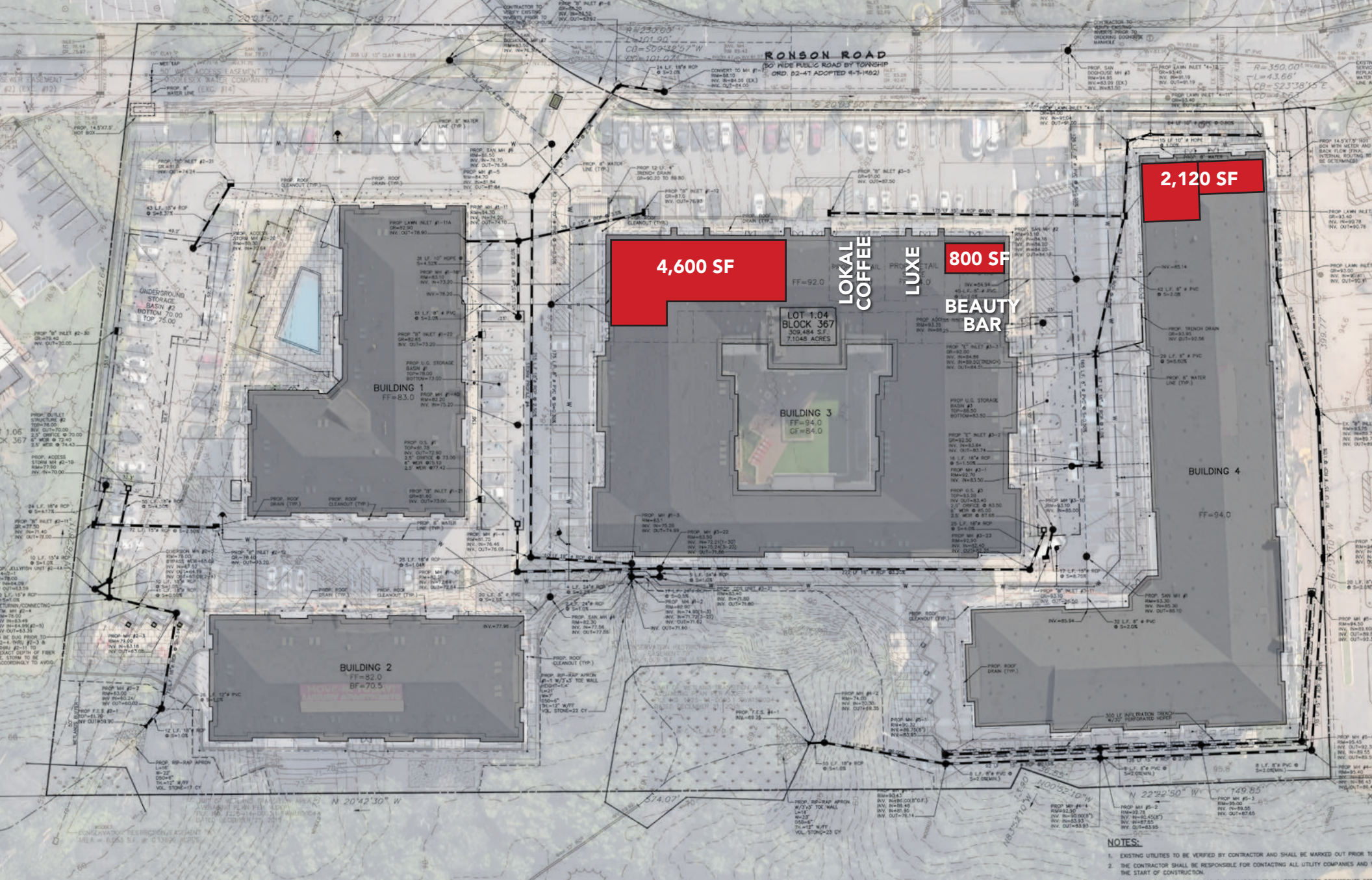


3 RONSON ROAD METROPARK, NEW JERSEY

SITE INFORMATION

GLA: 11,110 SF GROUND FLOOR RETAIL
VACANT: 800 - 4,600 SF
RENT: CALL FOR QUOTE
NNN: EST. \$8.25 PSF

- NOTES:**
- Newly completed Grande at Metropark retail space.
 - Four buildings with 356 apartments.
 - Easy access to Route 1, Garden State Parkway, and Metropark Train Station.
 - Nearby both Menlo Park Mall and Woodbridge Center Mall.
 - Venting capabilities for possible food use.



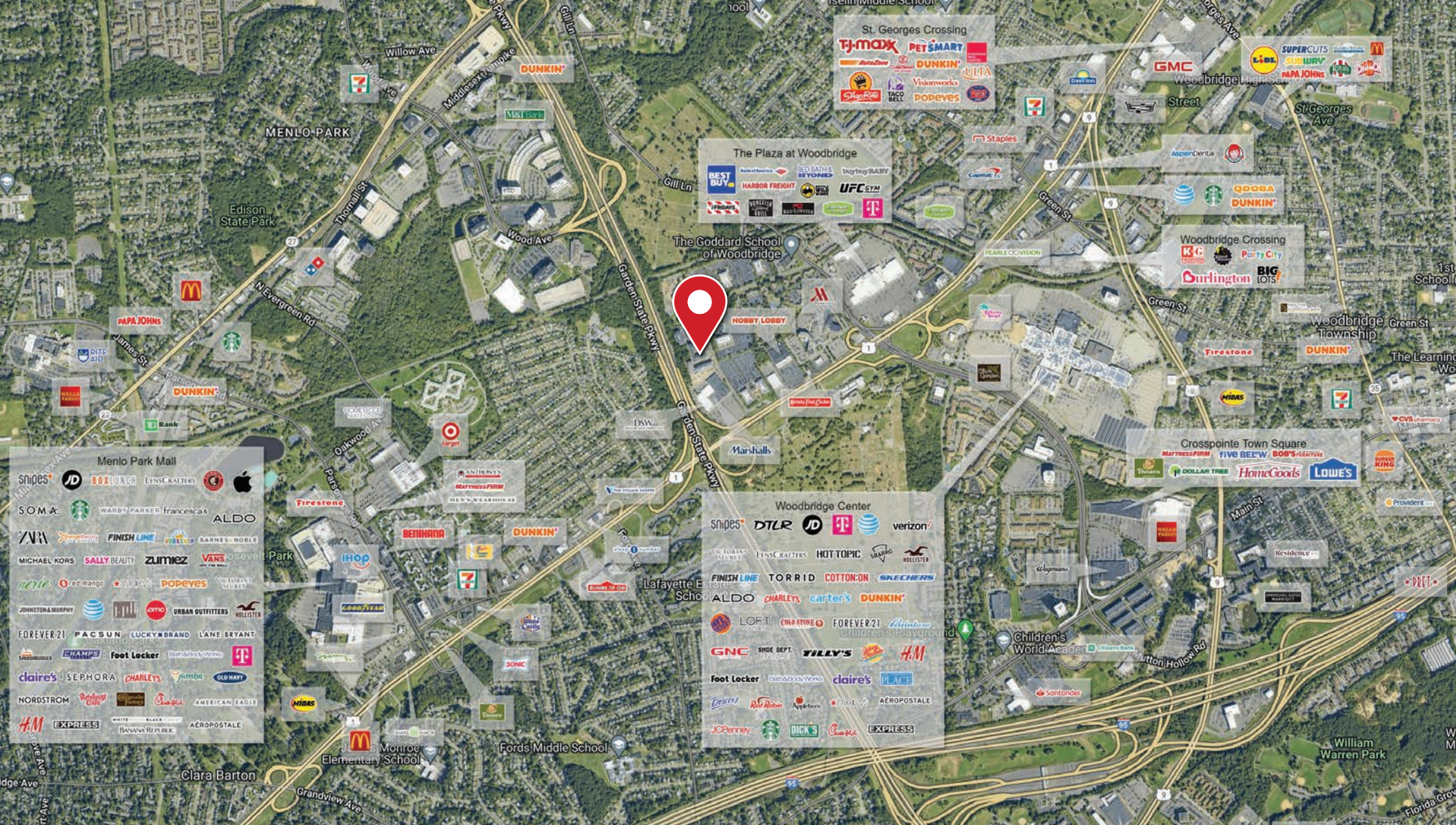
3 RONSON ROAD METROPARK, NEW JERSEY

SITE PLAN



3 RONSON ROAD METROPARK, NEW JERSEY

SITE PHOTOS



3 RONSON ROAD METROPARK, NEW JERSEY

MARKET AERIAL