

# Office Space

# AVAILABLE

# FOR LEASE

## 9201 Camino Media

Bakersfield, CA

### Property Highlights

- Located in the highly desirable University Centre Submarket
- Second floor space available
- Professionally maintained and managed by M.D. Atkinson Co., Inc
- Located just west of the Marketplace
- Neighbors include Chevron, CRC, AERA, Morgan Stanley, UBS, etc



The information contained herein may have been obtained from sources other than ASU Commercial. We have not verified such information and make no guarantees, warranties or representations about such information. It is your responsibility to independently confirm its accuracy and completeness prior to purchasing/leasing the property.



**Martin J. Starr** • Principal • 661 616 3567 • [mjstarr@asuassociates.com](mailto:mjstarr@asuassociates.com) • CA RE #01179469  
**Matthew E. Starr, SIOR, CCIM** • Principal • 661 616 3570 • [matthew@asuassociates.com](mailto:matthew@asuassociates.com) • CA RE #01367855  
11601 Bolthouse Drive Suite 110 • Bakersfield, CA 93311 • 661 862 5454 main • 661 862 5444 fax

# Office Space Available For Lease

## Second Floor Availability | Floor Plan

9201 Camino Media - Bakersfield, CA

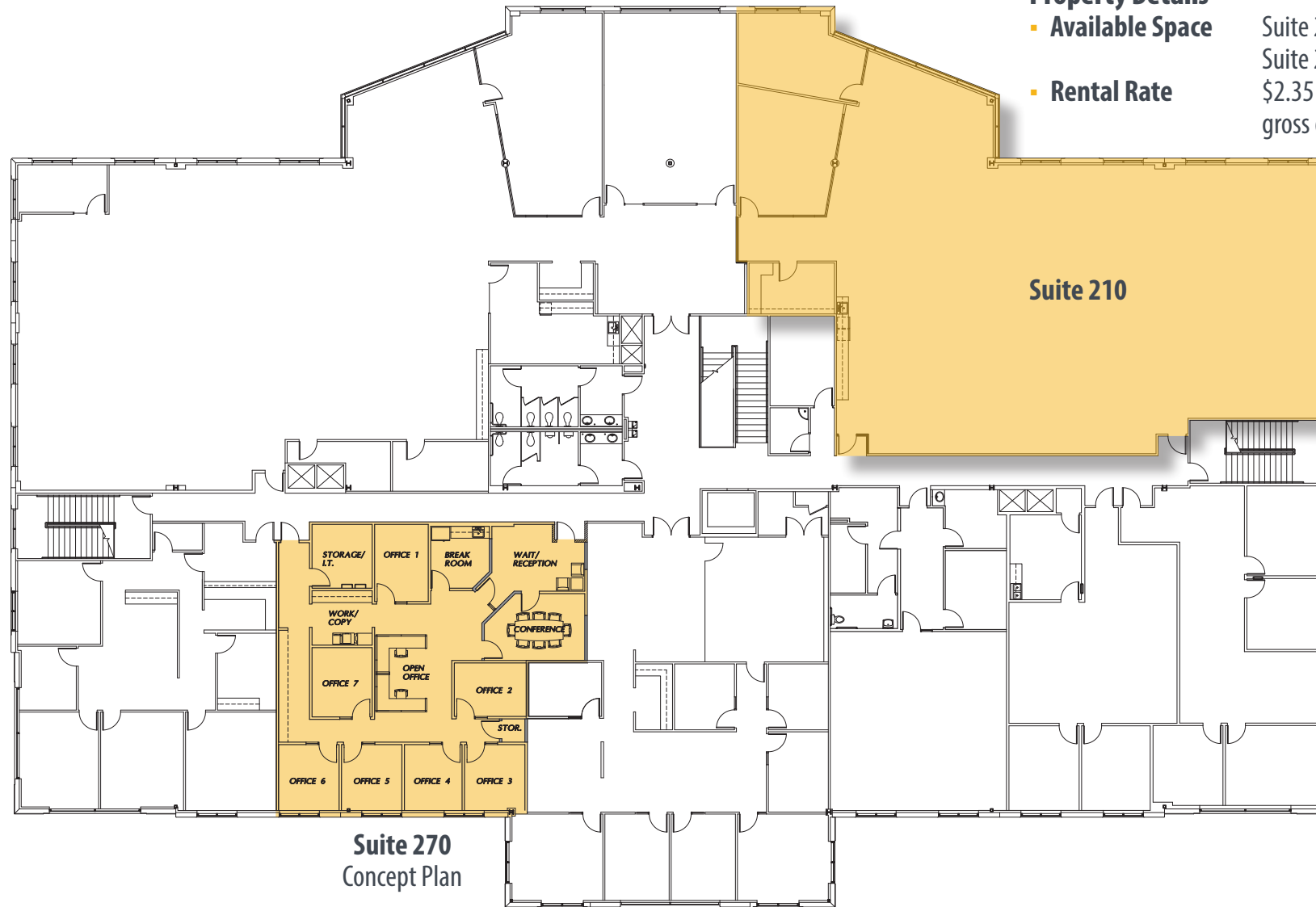
### Property Details

- Available Space
- Rental Rate

Suite 210 - 5,849 RSF

Suite 270 - 2,565 RSF

\$2.35 per RSF per month modified gross excluding utilities and janitorial service



\*Plans deemed to be accurate, but not guaranteed. Plan not to scale.



**Martin J. Starr** • Principal • 661 616 3567 • [mjstarr@asuassociates.com](mailto:mjstarr@asuassociates.com) • CA RE #01179469  
**Matthew E. Starr, SIOR, CCIM** • Principal • 661 616 3570 • [matthew@asuassociates.com](mailto:matthew@asuassociates.com) • CA RE #01367855  
11601 Bolthouse Drive Suite 110 • Bakersfield, CA 93311 • 661 862 5454 main • 661 862 5444 fax



# Office Space Available For Lease

## Property Photos

9201 Camino Media - Bakersfield, CA



**Martin J. Starr** • Principal • 661 616 3567 • [mjstarr@asuassociates.com](mailto:mjstarr@asuassociates.com) • CA RE #01179469  
**Matthew E. Starr, SIOR, CCIM** • Principal • 661 616 3570 • [matthew@asuassociates.com](mailto:matthew@asuassociates.com) • CA RE #01367855  
11601 Bolthouse Drive Suite 110 • Bakersfield, CA 93311 • 661 862 5454 main • 661 862 5444 fax



# Office Space Available For Lease

**Aerial Photo Facing Southeast**

9201 Camino Media - Bakersfield, CA



**Martin J. Starr** • Principal • 661 616 3567 • [mjstarr@asuassociates.com](mailto:mjstarr@asuassociates.com) • CA RE #01179469  
**Matthew E. Starr, SIOR, CCIM** • Principal • 661 616 3570 • [matthew@asuassociates.com](mailto:matthew@asuassociates.com) • CA RE #01367855  
11601 Bolthouse Drive Suite 110 • Bakersfield, CA 93311 • 661 862 5454 main • 661 862 5444 fax



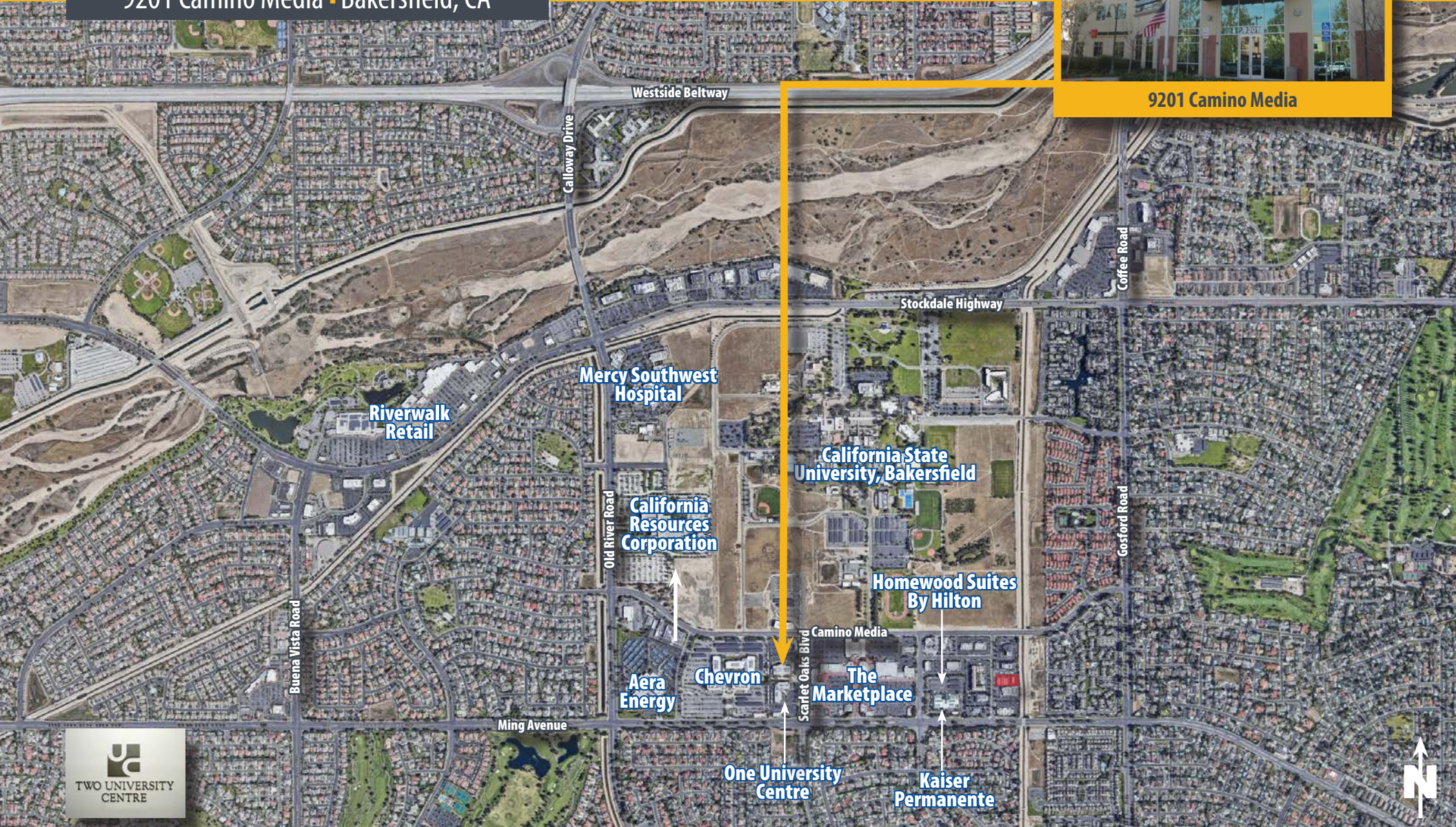
# Office Space Available For Lease

## Aerial of University Centre Submarket

9201 Camino Media - Bakersfield, CA



9201 Camino Media



TWO UNIVERSITY CENTRE



Martin J. Starr • Principal • 661 616 3567 • [mjstarr@asuassociates.com](mailto:mjstarr@asuassociates.com) • CA RE #01179469  
Matthew E. Starr, SIOR, CCIM • Principal • 661 616 3570 • [matthew@asuassociates.com](mailto:matthew@asuassociates.com) • CA RE #01367855  
11601 Bolthouse Drive Suite 110 • Bakersfield, CA 93311 • 661 862 5454 main • 661 862 5444 fax

