

FORMER ALABAMA CENTRAL CREDIT UNION
3601 4th Ave S, Birmingham, AL 35222



OFFERING SUMMARY

Sale Price:	\$1,500,000
Building Size:	15,920 SF
Year Built:	1966
Zoning:	M1

PROPERTY OVERVIEW

This 15,920-square-foot building, formerly home to Alabama Central Credit Union, presents an exceptional opportunity for office or flex space investment. Zoned M1, the property offers unmatched versatility, accommodating a wide range of professional and light industrial applications. Its adaptable layout is ideal for offices, creative workspaces, or light industrial operations, making it a flexible solution for modern business needs. Thoughtfully designed and well-maintained, the building provides a strong foundation for customization and redevelopment. Located in the thriving Birmingham area, this property is an excellent choice for investors seeking a versatile asset with long-term potential. Whether for owner-occupancy or leasing, it is well-positioned to meet the demands of a diverse range of professional endeavors.

PROPERTY HIGHLIGHTS

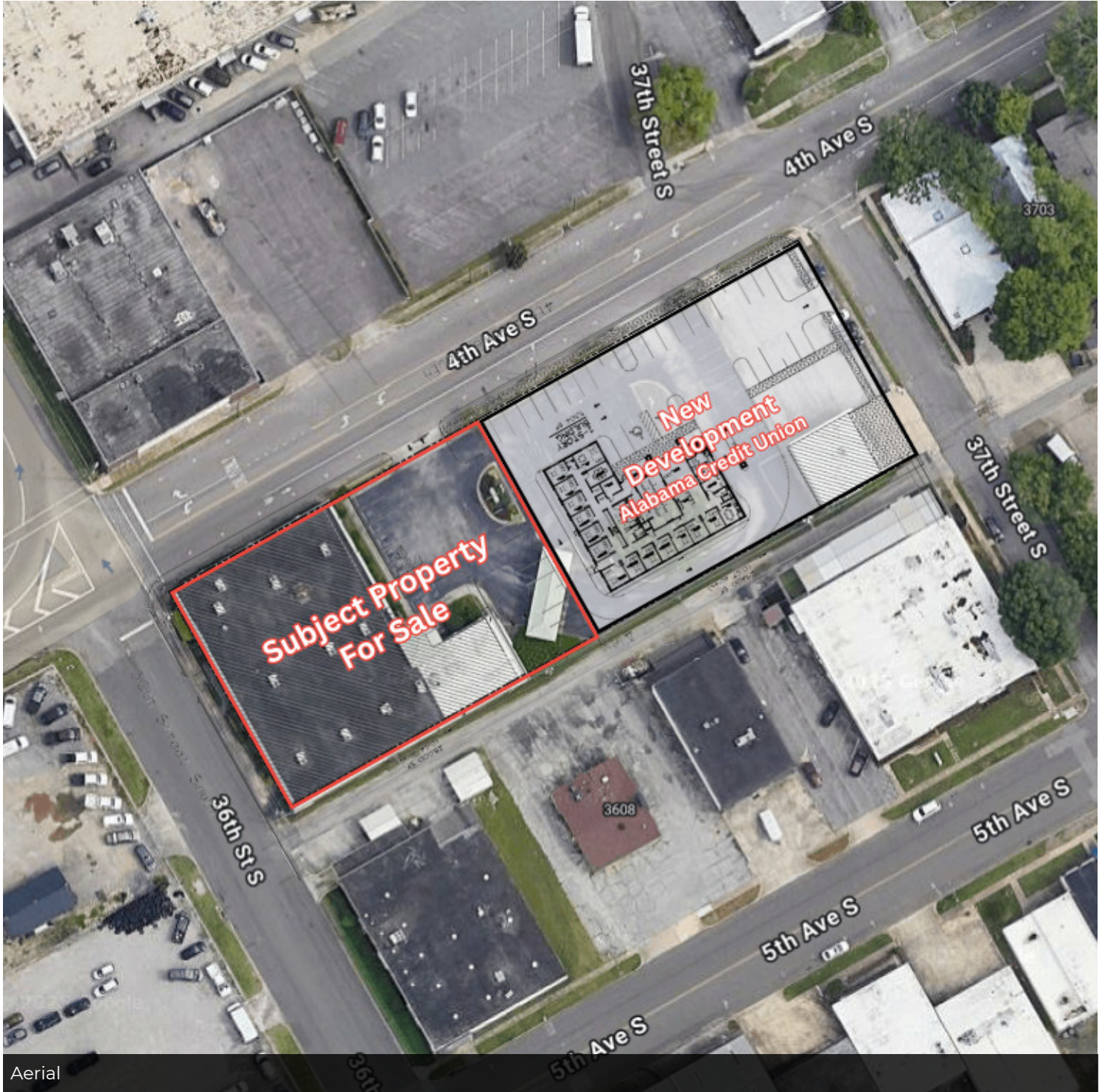
- Adaptable design for various professional uses.
- Well-maintained property with customization potential.
- Located in downtown Birmingham with excellent accessibility.
- Ideal for office or light industrial operations.
- Strong investment for occupancy or leasing income.

Video: [Click Here](#)

FORD FITTS	GRIFFIN CARROLL
205.235.0440	205.235.0440
fordf@acrerep.com	griffinc@acrerep.com

ACRE REAL ESTATE PARTNERS, LLC
1607 Richard Arrington Jr Blvd S
Birmingham, AL 35205
205.235.0440 | acrerep.com

FORMER ALABAMA CENTRAL CREDIT UNION
3601 4th Ave S, Birmingham, AL 35222



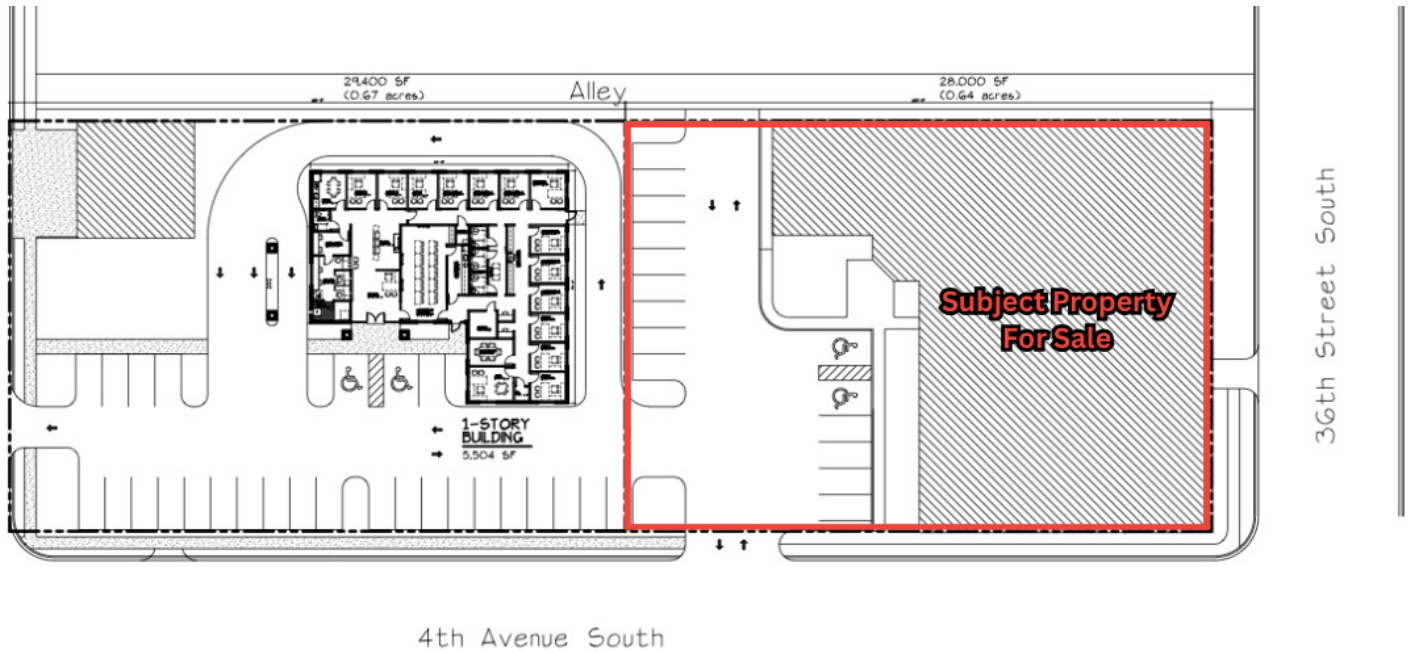
Aerial

FORD FITTS
205.235.0440
fordf@acrerep.com

GRIFFIN CARROLL
205.235.0440
griffinc@acrerep.com

ACRE REAL ESTATE PARTNERS, LLC
1607 Richard Arrington Jr Blvd S
Birmingham, AL 35205
205.235.0440 | acrerep.com

FORMER ALABAMA CENTRAL CREDIT UNION
3601 4th Ave S, Birmingham, AL 35222



Site Plan



New Development Rendering

FORD FITTS
205.235.0440
fordf@acrerep.com

GRIFFIN CARROLL
205.235.0440
griffinc@acrerep.com

ACRE REAL ESTATE PARTNERS, LLC
1607 Richard Arrington Jr Blvd S
Birmingham, AL 35205
205.235.0440 | acrerep.com

FORMER ALABAMA CENTRAL CREDIT UNION
3601 4th Ave S, Birmingham, AL 35222



Front Entrance



Loading Door (Access on 36th Street South)

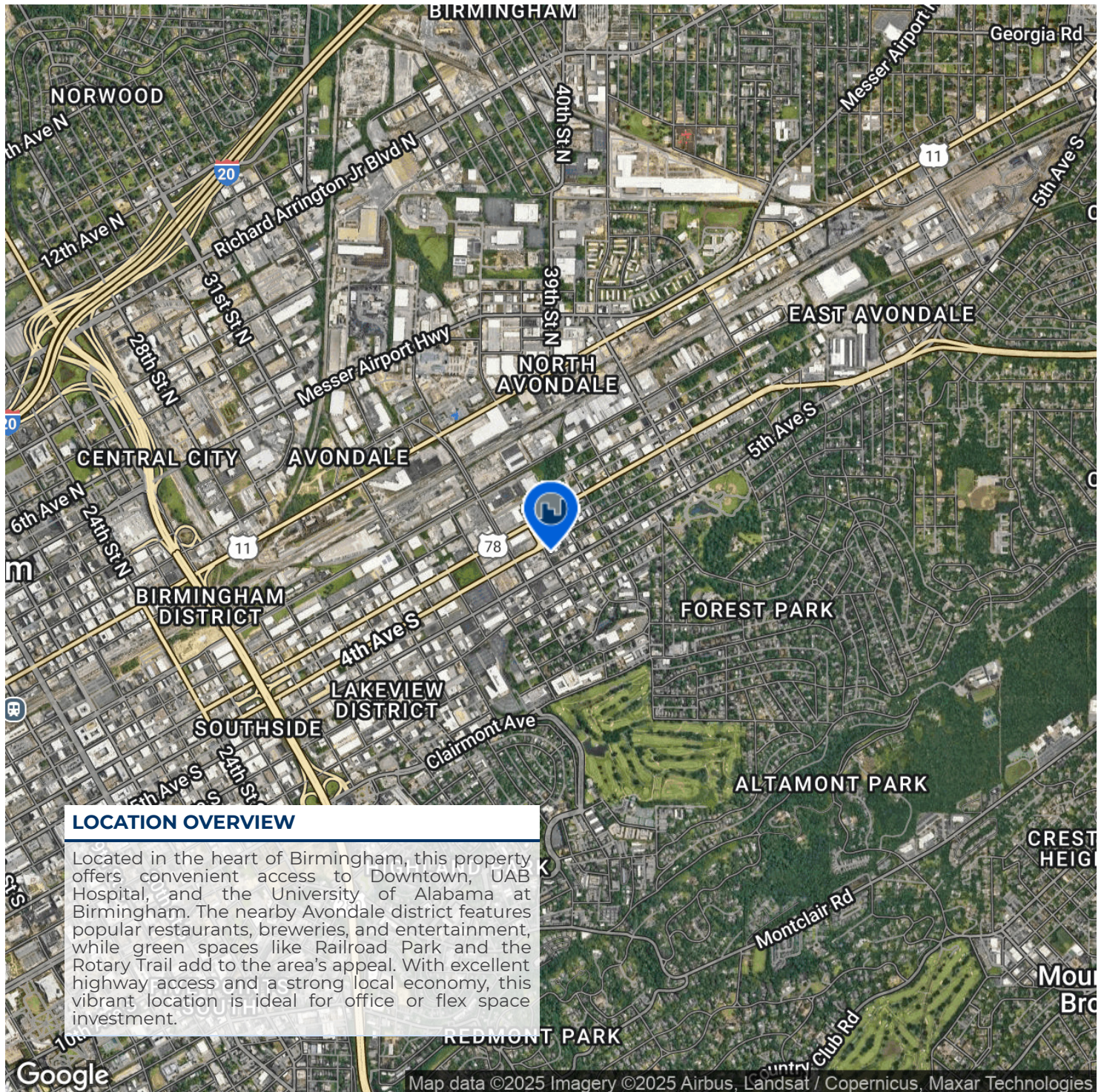
FORD FITTS
205.235.0440
fordf@acrerep.com

GRIFFIN CARROLL
205.235.0440
griffinc@acrerep.com

ACRE REAL ESTATE PARTNERS, LLC
1607 Richard Arrington Jr Blvd S
Birmingham, AL 35205
205.235.0440 | acrerep.com

FORMER ALABAMA CENTRAL CREDIT UNION

3601 4th Ave S, Birmingham, AL 35222

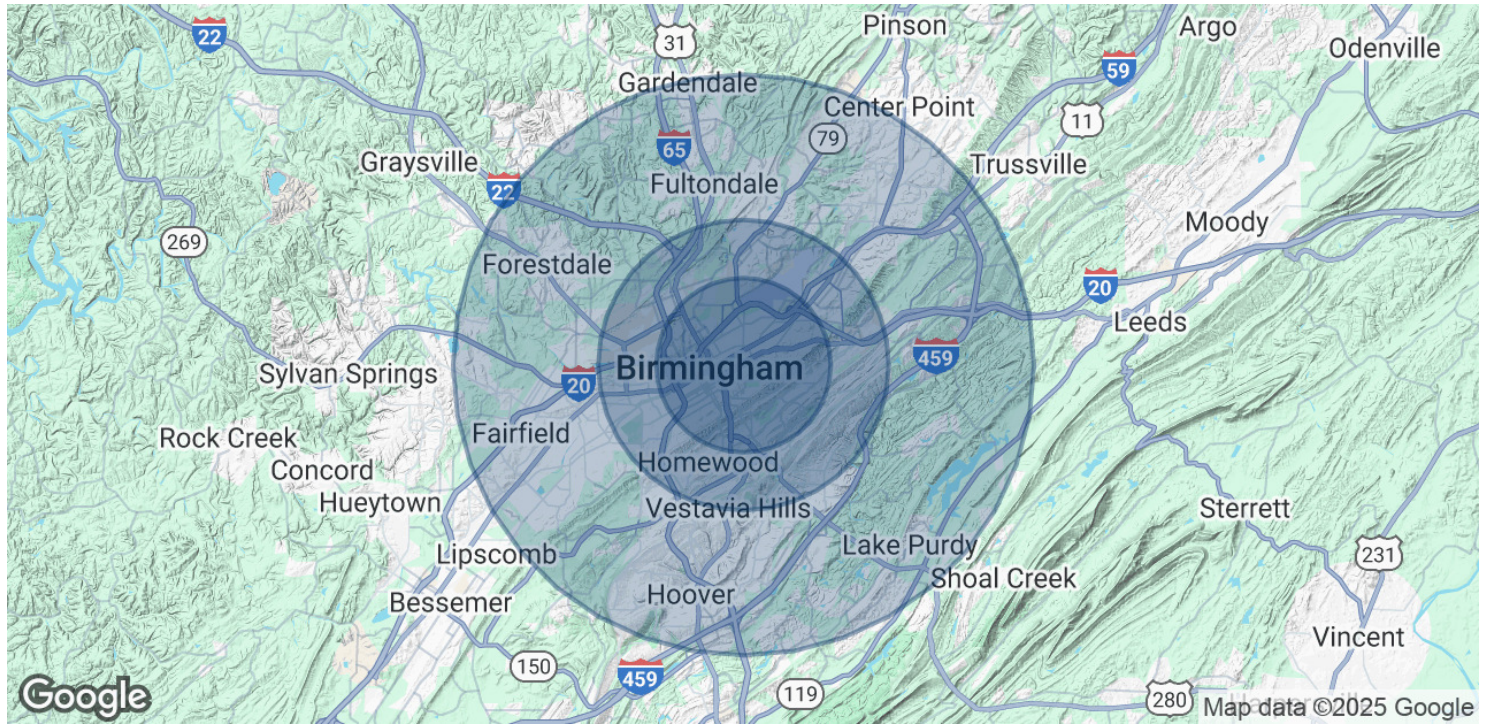


FORD FITTS
205.235.0440
fordf@acrerep.com

GRIFFIN CARROLL
205.235.0440
griffinc@acrerep.com

ACRE REAL ESTATE PARTNERS, LLC
1607 Richard Arrington Jr Blvd S
Birmingham, AL 35205
205.235.0440 | acrerep.com

FORMER ALABAMA CENTRAL CREDIT UNION
3601 4th Ave S, Birmingham, AL 35222



POPULATION	3 MILES	5 MILES	10 MILES
Total Population	66,994	156,310	430,035
Average Age	38	39	40
Average Age (Male)	38	38	39
Average Age (Female)	39	40	41

HOUSEHOLDS & INCOME	3 MILES	5 MILES	10 MILES
Total Households	31,063	66,859	181,214
# of Persons per HH	2.2	2.3	2.4
Average HH Income	\$97,312	\$96,962	\$99,890
Average House Value	\$452,931	\$401,220	\$346,786

Demographics data derived from AlphaMap

FORD FITTS
205.235.0440
fordf@acrerep.com

GRIFFIN CARROLL
205.235.0440
griffinc@acrerep.com

ACRE REAL ESTATE PARTNERS, LLC
1607 Richard Arrington Jr Blvd S
Birmingham, AL 35205
205.235.0440 | acrerep.com