



Payson Medical Office

203 North 1250 East, Payson, UT 84651



Jon Gunther

Invested Capital Partners
1735 N State St, Provo, UT 84604
jgunther@gmail.com
(801) 367-9712

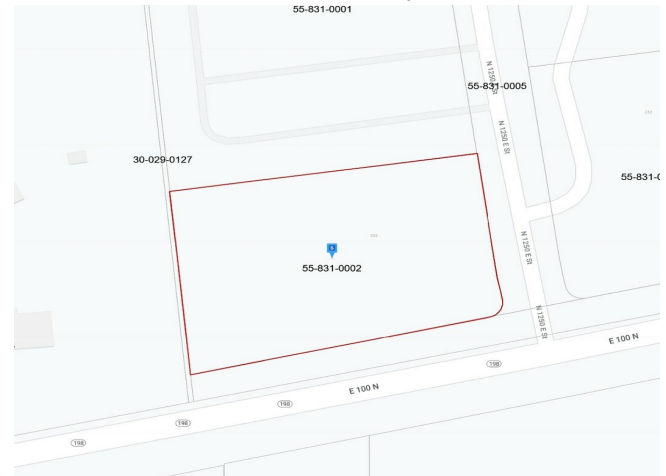


Payson Medical Office

\$28.50 /SF/YR

New medical office to be built across from Mountain View Hospital. Move-in ready date Oct 2025. Call to enquire about purchase options...

- Lease rate includes \$50 in tenant improvement allowance.
- Across from Mountain View Hospital



Rental Rate:	\$28.50 /SF/YR
Min. Divisible:	2,500 SF
Property Type:	Office
Property Subtype:	Medical
Building Class:	A
Rentable Building Area:	21,000 SF
Year Built:	2026
Construction Status:	Proposed
Walk Score ®:	27 (Car-Dependent)
Transit Score ®:	25 (Some Transit)
Rental Rate Mo:	\$2.38 /SF/MO

1st Floor Ste 150

Space Available	3,000 SF
Rental Rate	\$28.50 /SF/YR
Contiguous Area	17,000 SF
Date Available	October 01, 2025
Service Type	Triple Net (NNN)
Space Type	New
Space Use	Office/Medical
Lease Term	Negotiable

New construction first floor suite.

1

2nd Floor Ste 200

Space Available	2,500 - 7,000 SF
Rental Rate	\$28.50 /SF/YR
Contiguous Area	17,000 SF
Date Available	October 01, 2025
Service Type	Triple Net (NNN)
Space Type	New
Space Use	Office/Medical
Lease Term	Negotiable

New construction full second floor suite.

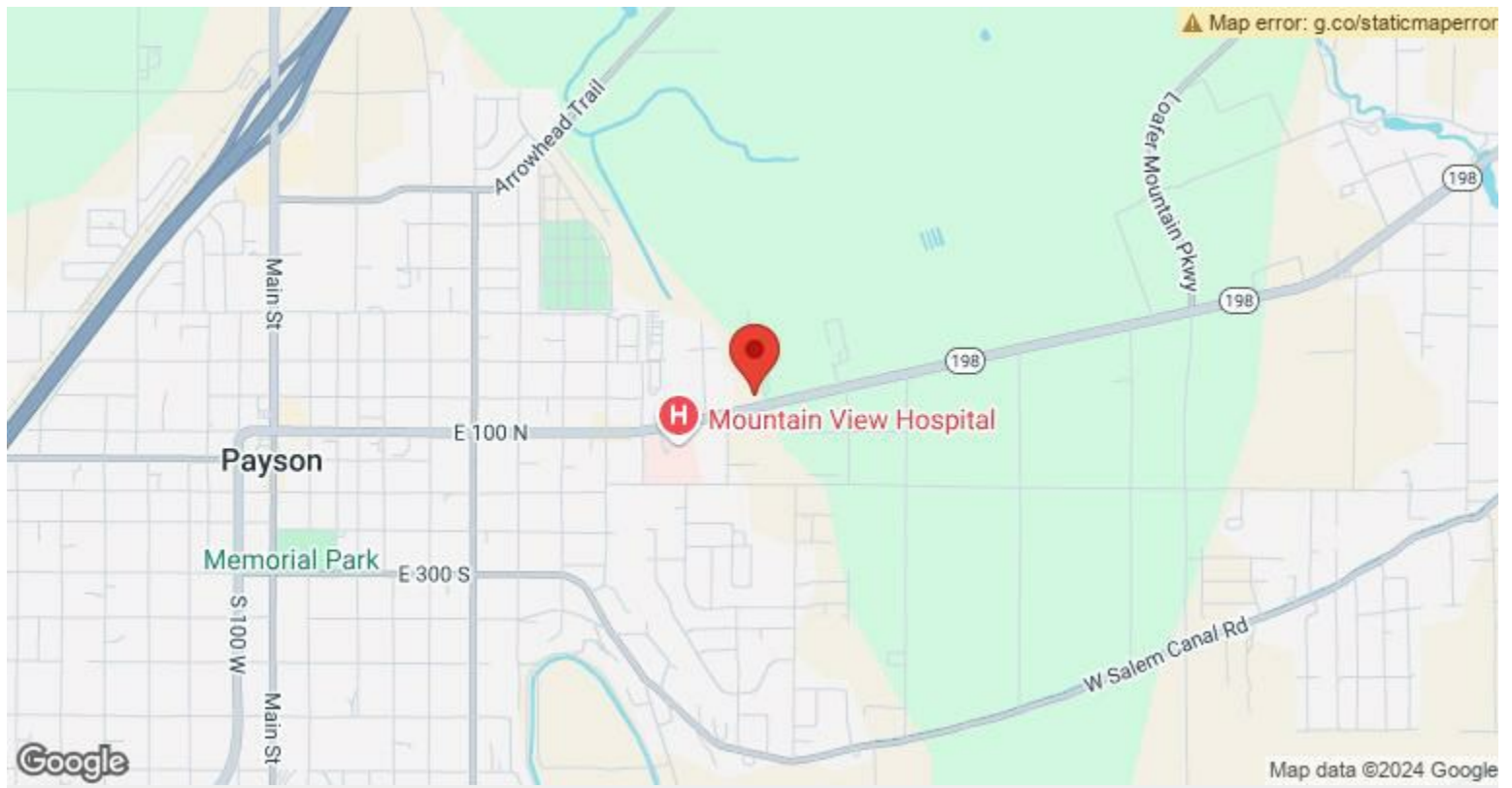
2

3rd Floor Ste 300

Space Available	2,500 - 7,000 SF
Rental Rate	\$28.50 /SF/YR
Contiguous Area	17,000 SF
Date Available	October 01, 2025
Service Type	Triple Net (NNN)
Space Type	New
Space Use	Office/Medical
Lease Term	Negotiable

New construction full third floor suite.

3



203 N 1250 East St, Payson, UT 84651

New medical office to be built near Mountain View Hospital. Move-in ready date Oct 2025. Call in enquire about purchase options.