



CREEK|CRE

INDUSTRIAL SPACE FOR SALE

DALSTON MINI STORAGE

2311 Southeast Lee Boulevard, Lawton, OK
73501

CAMDEN NIGHTENGALE

727.946.3333

camden@creekcre.com

ALEX SAMPLES

405.464.3030

alex@creekcre.com

600 NE 4TH STREET, SUITE 100 | OKLAHOMA CITY, OK 73104-6231 | 405.510.0079 | CREEKCRE.COM

MAY 27, 2026

EXECUTIVE SUMMARY



OFFERING SUMMARY

Sale Price:	\$3,300,000
Building Size:	97,012 SF
Number of Units:	727
Price / SF:	\$34.02
NOI	\$254,499

PROPERTY OVERVIEW

This property is strategically positioned to meet strong local storage demand. Featuring 727 units, it offers a wide variety of options to serve the needs of the surrounding community. Currently operating at 70% occupancy and situated on approximately ±36 acres, the property provides immediate upside potential along with significant room for expansion—making it a highly versatile opportunity for investors looking to grow their portfolio.

PROPERTY HIGHLIGHTS

- 727 Units
- +/- 36 total acres
- 6 Miles from Fort Sill
- 5 Miles from Cameron University
- 2 houses on the property as well

CAMDEN NIGHTENGALE

727.946.3333

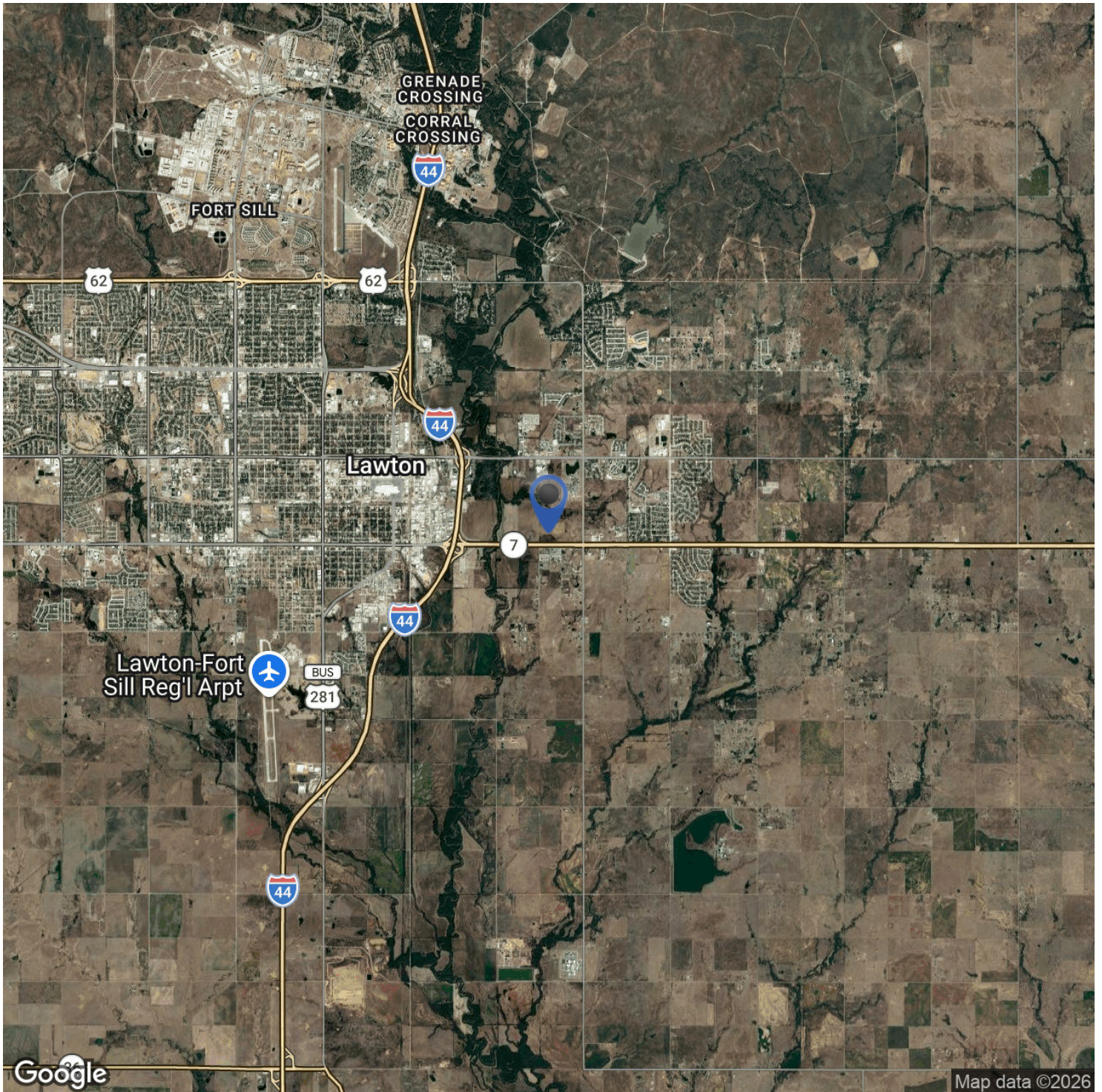
camden@creekcre.com

ALEX SAMPLES

405.464.3030

alex@creekcre.com

LOCATION MAP



CAMDEN NIGHTENGALE
727.946.3333
camden@creekcre.com

ALEX SAMPLES
405.464.3030
alex@creekcre.com

ADDITIONAL PHOTOS



CAMDEN NIGHTENGALE
727.946.3333
camden@creekcre.com

ALEX SAMPLES
405.464.3030
alex@creekcre.com