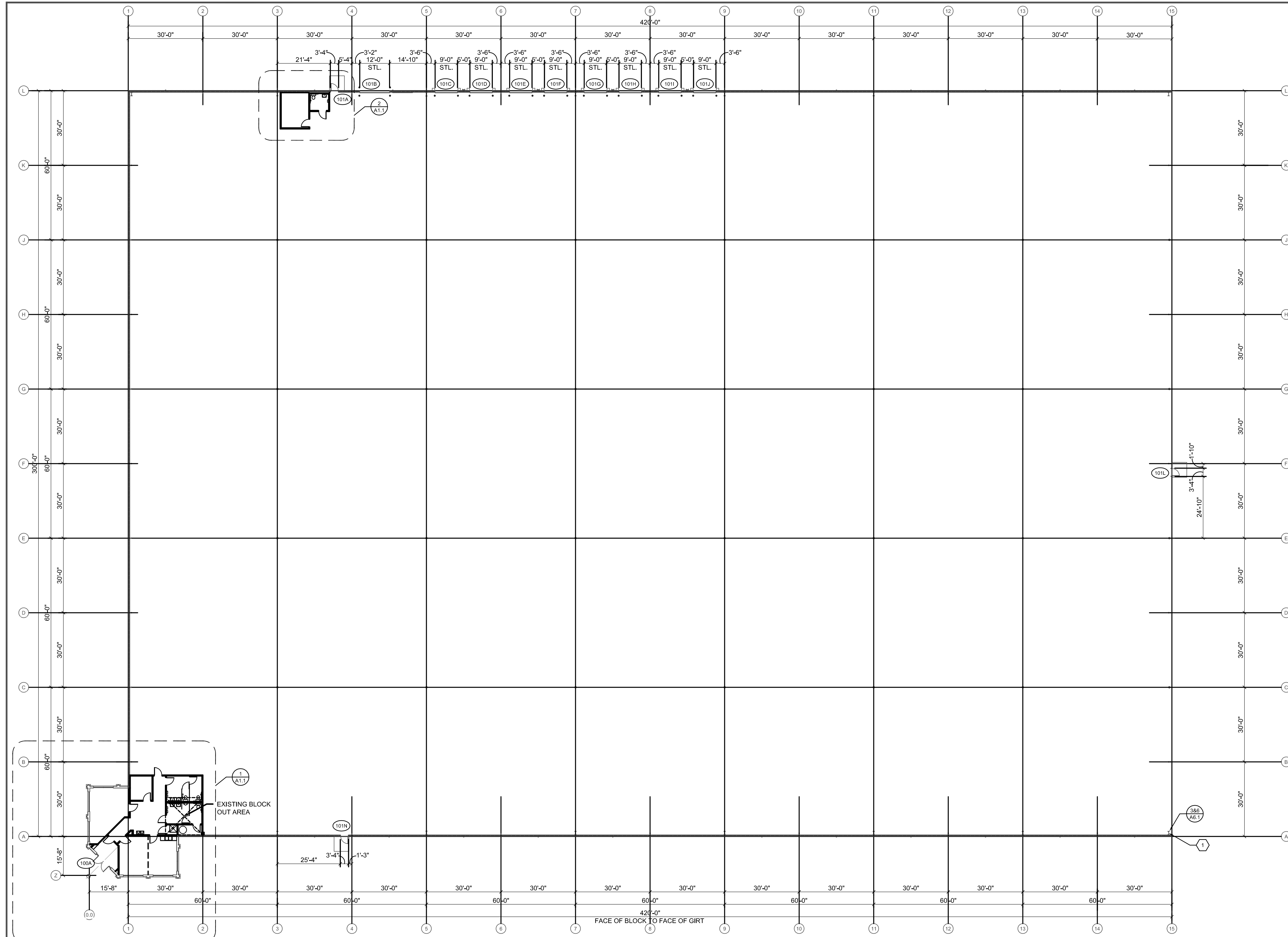


Hodge Engineering - July 05, 2022 - 3:30pm
 H:\2019 Projects\19259.1 - SL - TA-165 Office Buildout\Working Drawings\Architectural\19259 A1.0 Floor Plan.dwg [A1.0] bgossett



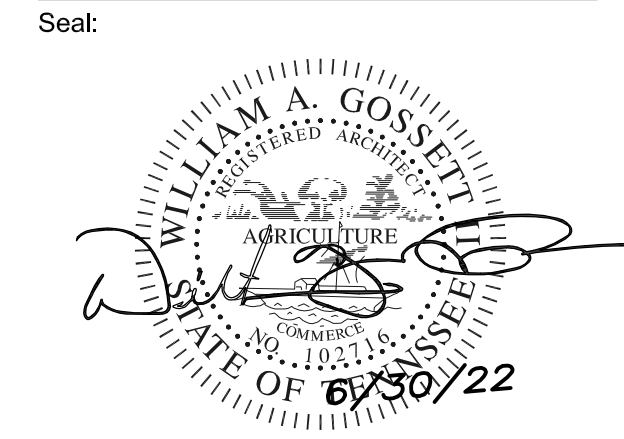
1
A1.0 **OVERALL FLOOR PLAN**
 SCALE: 1"=20'-0"

- ### DEMOLITION NOTES
1. DO ALL DEMOLITION WORK REQUIRED TO REMOVE EXISTING MASONRY WALLS, FINISHES, FOUNDATIONS, CONCRETE SLABS, EXISTING UNDERGROUND PIPING, CONDUIT, BUILDING FINISHES, DOORS, WINDOWS AS SHOWN ON DRAWINGS AND OTHER NECESSARY ITEMS REQUIRED TO INSTALL THE NEW WORK.
 2. CONTRACTORS SUBMITTING PROPOSALS SHALL DETERMINE THE QUANTITIES OF DEMOLITION WORK REQUIRED BY PERSONAL OBSERVATION AT THE BUILDING AND SITE.
 3. MAINTAIN TEMPORARY BARRICADES FOR PROTECTION OF JOB PERSONNEL AND THE PUBLIC. REMOVE BARRICADES WHEN NOT REQUIRED.
 4. PROMPTLY REPAIR ANY DAMAGES RESULTING FROM DEMOLITION WORK AT NO EXTRA EXPENSE TO THE OWNER.
 5. CONDUCT OPERATIONS IN A MANNER TO MINIMIZE INTERFERENCE OF PUBLIC AREAS AND ADJACENT OCCUPIED FACILITIES. DO NOT CLOSE, BLOCK OR OBSTRUCT USE OF PUBLIC WAYS OR FACILITIES WITHOUT WRITTEN CONSENT OF AUTHORITIES HAVING JURISDICTION. PROVIDE ALTERNATE ROUTES AROUND CLOSED OR OBSTRUCTED FACILITIES AS REQUIRED BY LOCAL REGULATIONS.
 6. EXISTING FACILITIES INDICATED TO REMAIN, SHALL REMAIN IN SERVICE AND PROTECTED FROM DAMAGE DURING DEMOLITION OPERATIONS.
 7. DO NOT INTERRUPT EXISTING OCCUPIED FACILITIES WITHOUT WRITTEN CONSENT OF AUTHORITIES HAVING JURISDICTION. IF INTERRUPTION IS ALLOWED, PROVIDE TEMPORARY SERVICES ACCEPTABLE TO GOVERNING AUTHORITIES.
 8. LIMIT THE EXPOSURE OF DUST AND DIRT BY USE OF WATER SPRINKLING, ENCLOSURES AND OTHER SUITABLE METHODS. COMPLY WITH GOVERNING REGULATIONS REGARDING ENVIRONMENTAL PROTECTION.
 9. REMOVE DEBRIS, RUBBISH, AND RELATED MATERIALS FROM SITE. LEGALLY TRANSPORT AND DISPOSE OF SUCH MATERIALS OFF-SITE.
 10. BURYING REMOVED MATERIAL ON THE PROJECT SITE IS FORBIDDEN.
 11. IF HAZARDOUS MATERIALS ARE ENCOUNTERED, COMPLY WITH APPLICABLE REGULATIONS FOR HANDLING, REMOVING, AND PROTECTING AGAINST EXPOSURE OR ENVIRONMENTAL POLLUTION.
 12. AVAILABILITY FOR DEMOLITION MUST BE CONFIRMED BY OWNER PRIOR TO DEMOLITION.
 13. CONTRACTOR SHALL COORDINATE WITH ALL UTILITY COMPANIES 48 HOURS PRIOR TO ANY DEMOLITION WORK.
 14. THE CONTRACTOR SHALL EXERCISE CAUTION WHEN PERFORMING DEMOLITION TO PROTECT EXISTING MATERIALS AND FINISHES.
 15. CONTRACTOR IS RESPONSIBLE FOR REMOVAL OR RELOCATION OF EXISTING UTILITIES THAT ARE LOCATED IN THE FLOOR, WALL, OR CEILING OF AN AREA SCHEDULED TO BE DEMOLISHED REGARDLESS IF IT IS IDENTIFIED ON THE PLANS. CONTRACTOR TO NOTIFY ARCHITECT OF ANY UNIDENTIFIED UTILITIES LOCATED WITHIN AREAS LISTED ABOVE.
 16. CONTRACTOR TO FIELD VERIFY EXTENT OF REMOVAL OF ALL EXISTING EQUIPMENT AND FIXTURES AND TO CAP EXISTING UTILITIES AS REQUIRED AND PREPARE SURFACE FOR NEW CONSTRUCTION.
 17. BEFORE ORDERING MATERIALS OR STARTING ANY WORK, THE CONTRACTOR SHALL FIELD VERIFY ALL DIMENSIONS AND WILL BE RESPONSIBLE FOR THE ACCURACY IN THE FIELD. ANY DIMENSION DIFFERENCES BETWEEN THE PLANS AND THE ACTUAL WORK SITE ARE TO BE SUBMITTED TO THE ARCHITECT IN WRITING BEFORE PROCEEDING THE WORK.
 18. CONTRACTOR SHALL BE RESPONSIBLE FOR ESTABLISHING AND MAINTAINING SAFE PATHS OF EGRESS FROM BUILDING IN CONFORMANCE W/ OSHA REGULATIONS AND BUILDING CODE REQUIREMENTS DURING COURSE OF WORK



322 Nancy Lynn Lane
 Suite 9, Knoxville, TN 37919
 Phone (865) 546-3232

Moving Your Vision Forward



Issue / Revision:

No.	Date	Description
0	6/30/22	Issued for Permit

Project No.: 19259.1

Drawn By: -

Eng Check	Dept Check	QA Check
/	-	-

This drawing is an instrument of service. It is the property of HODGE Engineering. It may not be copied in whole or in part without the written permission of HODGE Engineering. HODGE Engineering disclaims any and all responsibility or liability for problems which arise from failure to follow these plans, specifications and design intent. HODGE Engineering disclaims any and all responsibility or liability for problems which arise from failure to obtain and/or follow the design professional's guidance with respect to any errors, omissions, inconsistencies, ambiguities or conflicts which are alleged. Design professionals' electronic or digital seal or signature is effective only as to that version of this document as originally published by design professional. Design professional is not responsible for any subsequent modification, corruption, or unauthorized use of such document. To verify the validity or applicability of the seal or signature, contact design professional.

Project Title:
**SL AMERICA
 OFFICE
 BUILDOUT**

Location:
 1521 Mountain Road
 Anderson Co.,
 Tennessee

Sheet Contents:
**OVERALL
 FLOOR PLAN**

Date:
 30 June, 2022

Sheet Number:

A1.0

1 OF 4