

Prime End-Cap Restaurant Space For Lease

# Merrick Mall Shopping Center

2124-2160 Merrick Mall Merrick, NY 11566



For More Information:



**Christopher Pesce**

Associate Broker  
Douglas Elliman Commercial - Long Island  
631.858.2470  
christopher.pesce@elliman.com



**Kenneth Hester**

Licensed Real Estate Salesperson  
Douglas Elliman Commercial - Long Island  
516.641.0342  
kenneth.hester@elliman.com

[WWW.ELLIMANCOMMERCIAL.COM](http://WWW.ELLIMANCOMMERCIAL.COM)

THE PROPERTY CONTAINED WITHIN THIS DOCUMENT IS BEING EXCLUSIVELY REPRESENTED BY DOUGLAS ELLIMAN REAL ESTATE COMMERCIAL DIVISION, 550 SMITHTOWN BYPASS STE. 117 SMITHTOWN, NY 11787 631.858.2405 © 2023 DOUGLAS ELLIMAN COMMERCIAL OF LI, LLC. ALL MATERIAL PRESENTED HEREIN IS INTENDED FOR INFORMATION PURPOSES ONLY. WHILE THIS INFORMATION IS BELIEVED TO BE CORRECT, IT IS REPRESENTED SUBJECT TO ERRORS, OMISSIONS, CHANGES OR WITHDRAWAL WITHOUT NOTICE. ALL PROPERTY INFORMATION, INCLUDING, BUT NOT LIMITED TO SQUARE FOOTAGE, ROOM COUNT, ZONING IN THE LISTING SHOULD BE VERIFIED BY YOUR OWN ATTORNEY, ARCHITECT OR ZONING EXPERT. IF YOUR PROPERTY IS CURRENTLY LISTED WITH ANOTHER REAL ESTATE BROKER, PLEASE DISREGARD THIS OFFER. IT IS NOT OUR INTENTION TO SOLICIT THE OFFERINGS OF OTHER REAL ESTATE BROKERS. WE COOPERATE WITH THEM FULLY. EQUAL HOUSING OPPORTUNITY.





# Prime End-Cap Restaurant Space for Lease

## 2124 Merrick Mall Merrick NY 11566



### Offering Summary

Lease Rate:	Upon Request
Shopping Center SF:	±85,663 SF
Available SF:	±6,300 SF
Renovated:	2016

### Property Overview

Prime 6,300 SF end-cap restaurant space available at Merrick Mall, a well-established Stop & Shop and CVS anchored shopping center in the heart of Merrick, NY. This is an ideal opportunity for a national or regional concept seeking a proven Nassau County location with high traffic and strong visibility from Merrick Avenue. The space benefits from valuable existing core infrastructure, including a hood, Ansul system, walk-in fridge/freezers, and bar area, providing a seamless foundation for a new tenant's vision. A basement level offers additional storage, and complementary tenants nearby ensure steady daily consumer traffic.

### Property Highlights

- **Valuable Existing Infrastructure:** The space features critical, high-cost infrastructure already installed, including a hood system, Ansul fire suppression, and walk-in fridge/freezers
- **Prime End-Cap Location:** Situated in the highly visible end-cap of the Merrick Mall, anchored by busy Stop & Shop and CVS
- **Strong Market Fundamentals:** The location benefits from steady daily traffic and a dense, high-income trade area

For More Information:

#### Christopher Pesce



Associate Broker  
Douglas Elliman Commercial - Long Island  
631.858.2470  
christopher.pesce@elliman.com

#### Kenneth Hester



Licensed Real Estate Salesperson  
Douglas Elliman Commercial - Long Island  
516.641.0342  
kenneth.hester@elliman.com



[WWW.ELLIMANCOMMERCIAL.COM](http://WWW.ELLIMANCOMMERCIAL.COM)

THE PROPERTY CONTAINED WITHIN THIS DOCUMENT IS BEING EXCLUSIVELY REPRESENTED BY DOUGLAS ELLIMAN REAL ESTATE COMMERCIAL DIVISION, 550 SMITHTOWN BYPASS STE. 117 SMITHTOWN, NY 11787 631.858.2405 © 2023 DOUGLAS ELLIMAN COMMERCIAL OF LI, LLC. ALL MATERIAL PRESENTED HEREIN IS INTENDED FOR INFORMATION PURPOSES ONLY. WHILE THIS INFORMATION IS BELIEVED TO BE CORRECT, IT IS REPRESENTED SUBJECT TO ERRORS, OMISSIONS, CHANGES OR WITHDRAWAL WITHOUT NOTICE. ALL PROPERTY INFORMATION, INCLUDING, BUT NOT LIMITED TO SQUARE FOOTAGE, ROOM COUNT, ZONING IN THE LISTING SHOULD BE VERIFIED BY YOUR OWN ATTORNEY, ARCHITECT OR ZONING EXPERT. IF YOUR PROPERTY IS CURRENTLY LISTED WITH ANOTHER REAL ESTATE BROKER, PLEASE DISREGARD THIS OFFER. IT IS NOT OUR INTENTION TO SOLICIT THE OFFERINGS OF OTHER REAL ESTATE BROKERS. WE COOPERATE WITH THEM FULLY. EQUAL HOUSING OPPORTUNITY.





# Prime End-Cap Restaurant Space for Lease

2124 Merrick Mall Merrick NY 11566



For More Information:

**Christopher Pesce**

Associate Broker  
Douglas Elliman Commercial - Long Island  
631.858.2470  
christopher.pesce@elliman.com

**Kenneth Hester**

Licensed Real Estate Salesperson  
Douglas Elliman Commercial - Long Island  
516.641.0342  
kenneth.hester@elliman.com

**Douglas Elliman**  
Commercial



[WWW.ELLIMANCOMMERCIAL.COM](http://WWW.ELLIMANCOMMERCIAL.COM)

THE PROPERTY CONTAINED WITHIN THIS DOCUMENT IS BEING EXCLUSIVELY REPRESENTED BY DOUGLAS ELLIMAN REAL ESTATE COMMERCIAL DIVISION, 550 SMITHTOWN BYPASS STE. 117 SMITHTOWN, NY 11787 631.858.2405 © 2023 DOUGLAS ELLIMAN COMMERCIAL OF LI, LLC. ALL MATERIAL PRESENTED HEREIN IS INTENDED FOR INFORMATION PURPOSES ONLY. WHILE THIS INFORMATION IS BELIEVED TO BE CORRECT, IT IS REPRESENTED SUBJECT TO ERRORS, OMISSIONS, CHANGES OR WITHDRAWAL WITHOUT NOTICE. ALL PROPERTY INFORMATION, INCLUDING, BUT NOT LIMITED TO SQUARE FOOTAGE, ROOM COUNT, ZONING IN THE LISTING SHOULD BE VERIFIED BY YOUR OWN ATTORNEY, ARCHITECT OR ZONING EXPERT. IF YOUR PROPERTY IS CURRENTLY LISTED WITH ANOTHER REAL ESTATE BROKER, PLEASE DISREGARD THIS OFFER. IT IS NOT OUR INTENTION TO SOLICIT THE OFFERINGS OF OTHER REAL ESTATE BROKERS. WE COOPERATE WITH THEM FULLY. EQUAL HOUSING OPPORTUNITY.





# Prime End-Cap Restaurant Space for Lease

2124 Merrick Mall Merrick NY 11566



For More Information:

**Christopher Pesce**

Associate Broker  
Douglas Elliman Commercial - Long Island  
631.858.2470  
christopher.pesce@elliman.com



**Kenneth Hester**

Licensed Real Estate Salesperson  
Douglas Elliman Commercial - Long Island  
516.641.0342  
kenneth.hester@elliman.com



**Douglas Elliman**  
Commercial



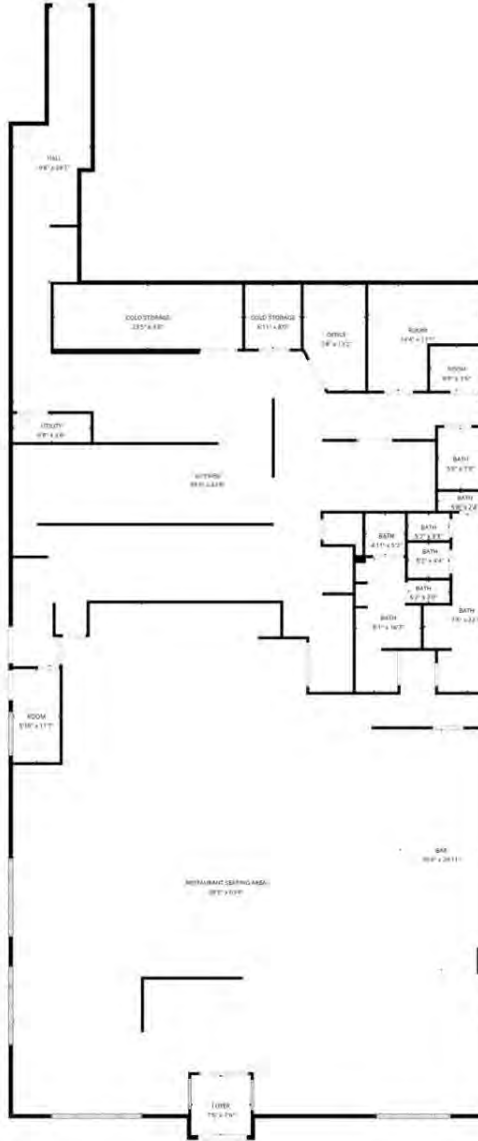
[WWW.ELLIMANCOMMERCIAL.COM](http://WWW.ELLIMANCOMMERCIAL.COM)

THE PROPERTY CONTAINED WITHIN THIS DOCUMENT IS BEING EXCLUSIVELY REPRESENTED BY DOUGLAS ELLIMAN REAL ESTATE COMMERCIAL DIVISION, 550 SMITHTOWN BYPASS STE. 117 SMITHTOWN, NY 11787 631.858.2405 © 2023 DOUGLAS ELLIMAN COMMERCIAL OF LI, LLC. ALL MATERIAL PRESENTED HEREIN IS INTENDED FOR INFORMATION PURPOSES ONLY. WHILE THIS INFORMATION IS BELIEVED TO BE CORRECT, IT IS REPRESENTED SUBJECT TO ERRORS, OMISSIONS, CHANGES OR WITHDRAWAL WITHOUT NOTICE. ALL PROPERTY INFORMATION, INCLUDING, BUT NOT LIMITED TO SQUARE FOOTAGE, ROOM COUNT, ZONING IN THE LISTING SHOULD BE VERIFIED BY YOUR OWN ATTORNEY, ARCHITECT OR ZONING EXPERT. IF YOUR PROPERTY IS CURRENTLY LISTED WITH ANOTHER REAL ESTATE BROKER, PLEASE DISREGARD THIS OFFER. IT IS NOT OUR INTENTION TO SOLICIT THE OFFERINGS OF OTHER REAL ESTATE BROKERS. WE COOPERATE WITH THEM FULLY. EQUAL HOUSING OPPORTUNITY.



# Prime End-Cap Restaurant Space for Lease

2124 Merrick Mall Merrick NY 11566



2124 Merrick Ave Merrick NY  
+/- 6,300 SF 2nd Gen Restaurant Space

FLOOR PLAN CREATED BY DOUGLAS ELLIMAN. MEASUREMENTS DEEMED HIGHLY RELIABLE BUT NOT GUARANTEED.

For More Information:

**Christopher Pesce**

Associate Broker  
Douglas Elliman Commercial - Long Island  
631.858.2470  
christopher.pesce@elliman.com

**Kenneth Hester**

Licensed Real Estate Salesperson  
Douglas Elliman Commercial - Long Island  
516.641.0342  
kenneth.hester@elliman.com

**Douglas Elliman**  
Commercial



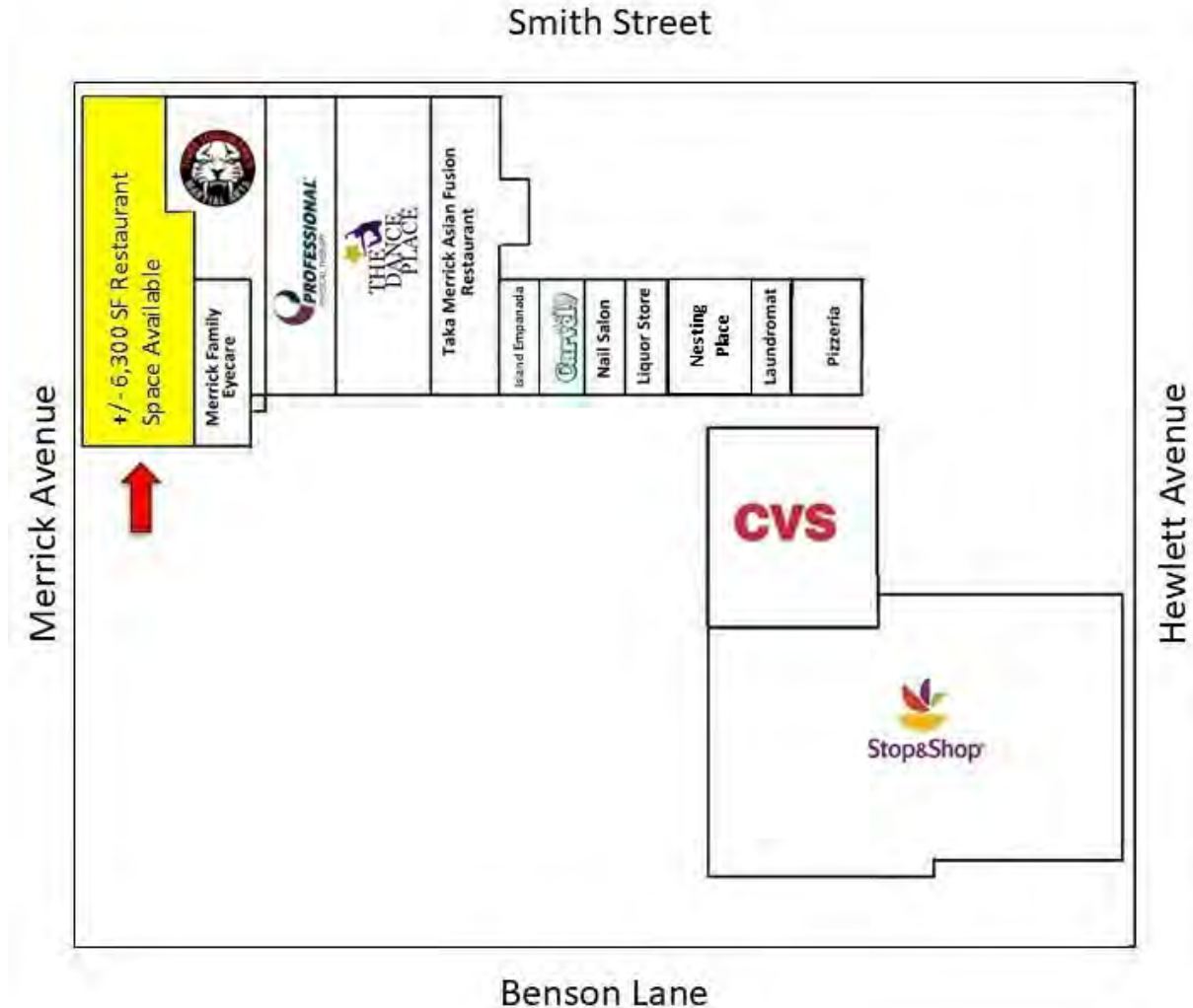
[WWW.ELLIMANCOMMERCIAL.COM](http://WWW.ELLIMANCOMMERCIAL.COM)

THE PROPERTY CONTAINED WITHIN THIS DOCUMENT IS BEING EXCLUSIVELY REPRESENTED BY DOUGLAS ELLIMAN REAL ESTATE COMMERCIAL DIVISION, 550 SMITHTOWN BYPASS STE. 117 SMITHTOWN, NY 11787 631.858.2405 © 2023 DOUGLAS ELLIMAN COMMERCIAL OF LI, LLC. ALL MATERIAL PRESENTED HEREIN IS INTENDED FOR INFORMATION PURPOSES ONLY. WHILE THIS INFORMATION IS BELIEVED TO BE CORRECT, IT IS REPRESENTED SUBJECT TO ERRORS, OMISSIONS, CHANGES OR WITHDRAWAL WITHOUT NOTICE. ALL PROPERTY INFORMATION, INCLUDING, BUT NOT LIMITED TO SQUARE FOOTAGE, ROOM COUNT, ZONING IN THE LISTING SHOULD BE VERIFIED BY YOUR OWN ATTORNEY, ARCHITECT OR ZONING EXPERT. IF YOUR PROPERTY IS CURRENTLY LISTED WITH ANOTHER REAL ESTATE BROKER, PLEASE DISREGARD THIS OFFER. IT IS NOT OUR INTENTION TO SOLICIT THE OFFERINGS OF OTHER REAL ESTATE BROKERS. WE COOPERATE WITH THEM FULLY. EQUAL HOUSING OPPORTUNITY.



# Prime End-Cap Restaurant Space for Lease

2124 Merrick Mall Merrick NY 11566



## Lease Information

Lease Type:	NNN	Lease Term:	Negotiable
Total Space:	±6,300 SF	Lease Rate:	Upon Request

For More Information:



### Christopher Pesce

Associate Broker  
Douglas Elliman Commercial - Long Island  
631.858.2470  
christopher.pesce@elliman.com



### Kenneth Hester

Licensed Real Estate Salesperson  
Douglas Elliman Commercial - Long Island  
516.641.0342  
kenneth.hester@elliman.com

Douglas Elliman  
Commercial



[WWW.ELLIMANCOMMERCIAL.COM](http://WWW.ELLIMANCOMMERCIAL.COM)

THE PROPERTY CONTAINED WITHIN THIS DOCUMENT IS BEING EXCLUSIVELY REPRESENTED BY DOUGLAS ELLIMAN REAL ESTATE COMMERCIAL DIVISION, 550 SMITHTOWN BYPASS STE. 117 SMITHTOWN, NY 11787 631.858.2405 © 2023 DOUGLAS ELLIMAN COMMERCIAL OF LI, LLC. ALL MATERIAL PRESENTED HEREIN IS INTENDED FOR INFORMATION PURPOSES ONLY. WHILE THIS INFORMATION IS BELIEVED TO BE CORRECT, IT IS REPRESENTED SUBJECT TO ERRORS, OMISSIONS, CHANGES OR WITHDRAWAL WITHOUT NOTICE. ALL PROPERTY INFORMATION, INCLUDING, BUT NOT LIMITED TO SQUARE FOOTAGE, ROOM COUNT, ZONING IN THE LISTING SHOULD BE VERIFIED BY YOUR OWN ATTORNEY, ARCHITECT OR ZONING EXPERT. IF YOUR PROPERTY IS CURRENTLY LISTED WITH ANOTHER REAL ESTATE BROKER, PLEASE DISREGARD THIS OFFER. IT IS NOT OUR INTENTION TO SOLICIT THE OFFERINGS OF OTHER REAL ESTATE BROKERS. WE COOPERATE WITH THEM FULLY. EQUAL HOUSING OPPORTUNITY.





# Prime End-Cap Restaurant Space for Lease

2124 Merrick Mall Merrick NY 11566



For More Information:

**Christopher Pesce**



Associate Broker  
Douglas Elliman Commercial - Long Island  
631.858.2470  
christopher.pesce@elliman.com

**Kenneth Hester**



Licensed Real Estate Salesperson  
Douglas Elliman Commercial - Long Island  
516.641.0342  
kenneth.hester@elliman.com

**Douglas Elliman**  
Commercial



[WWW.ELLIMANCOMMERCIAL.COM](http://WWW.ELLIMANCOMMERCIAL.COM)

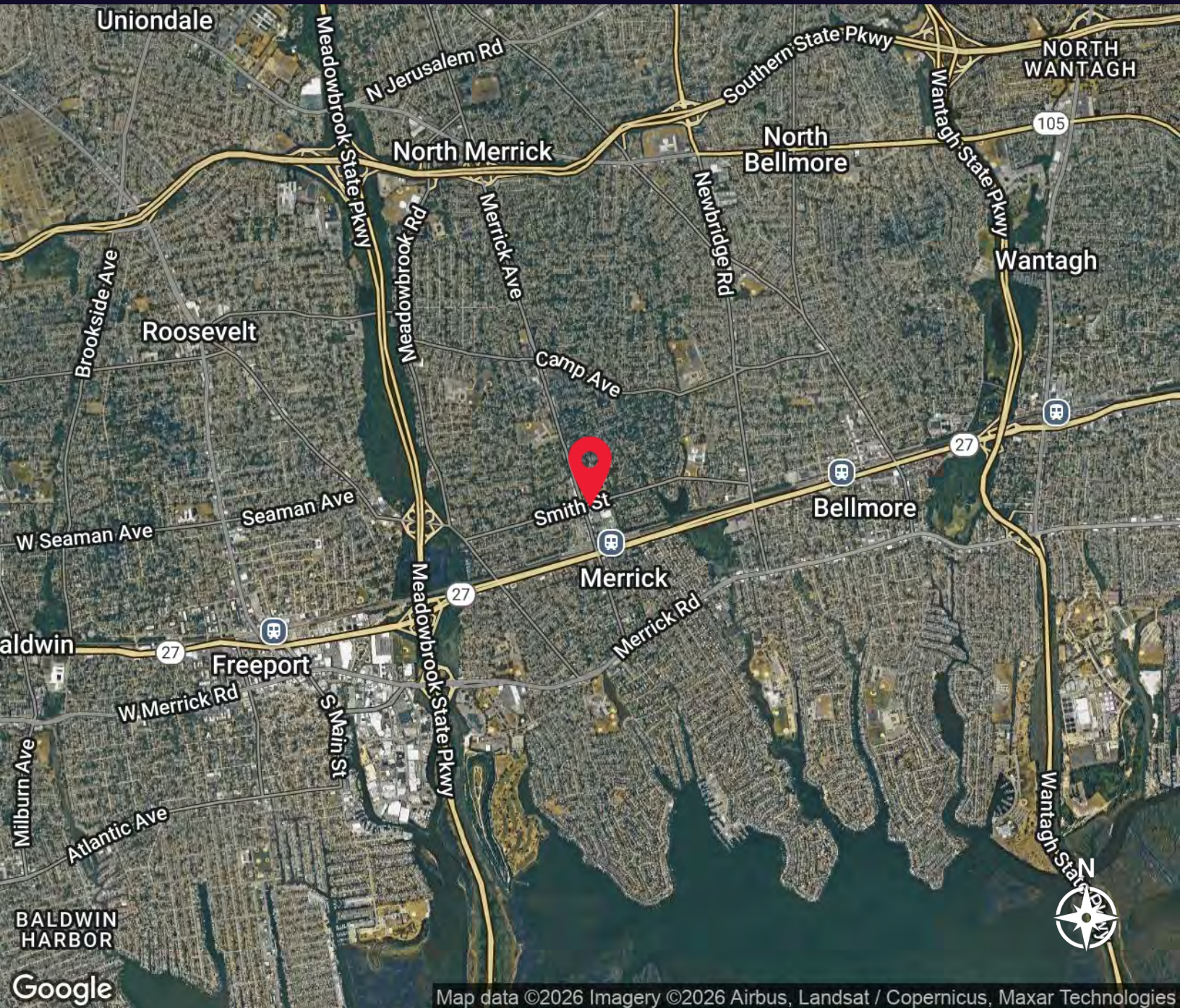
THE PROPERTY CONTAINED WITHIN THIS DOCUMENT IS BEING EXCLUSIVELY REPRESENTED BY DOUGLAS ELLIMAN REAL ESTATE COMMERCIAL DIVISION, 550 SMITHTOWN BYPASS STE. 117 SMITHTOWN, NY 11787 631.858.2405 © 2023 DOUGLAS ELLIMAN COMMERCIAL OF LI, LLC. ALL MATERIAL PRESENTED HEREIN IS INTENDED FOR INFORMATION PURPOSES ONLY. WHILE THIS INFORMATION IS BELIEVED TO BE CORRECT, IT IS REPRESENTED SUBJECT TO ERRORS, OMISSIONS, CHANGES OR WITHDRAWAL WITHOUT NOTICE. ALL PROPERTY INFORMATION, INCLUDING, BUT NOT LIMITED TO SQUARE FOOTAGE, ROOM COUNT, ZONING IN THE LISTING SHOULD BE VERIFIED BY YOUR OWN ATTORNEY, ARCHITECT OR ZONING EXPERT. IF YOUR PROPERTY IS CURRENTLY LISTED WITH ANOTHER REAL ESTATE BROKER, PLEASE DISREGARD THIS OFFER. IT IS NOT OUR INTENTION TO SOLICIT THE OFFERINGS OF OTHER REAL ESTATE BROKERS. WE COOPERATE WITH THEM FULLY. EQUAL HOUSING OPPORTUNITY.





# Prime End-Cap Restaurant Space for Lease

## 2124 Merrick Mall Merrick NY 11566



For More Information:

**Christopher Pesce**



Associate Broker  
Douglas Elliman Commercial - Long Island  
631.858.2470  
christopher.pesce@elliman.com

**Kenneth Hester**



Licensed Real Estate Salesperson  
Douglas Elliman Commercial - Long Island  
516.641.0342  
kenneth.hester@elliman.com

 **Douglas Elliman**  
Commercial



[WWW.ELLIMANCOMMERCIAL.COM](http://WWW.ELLIMANCOMMERCIAL.COM)

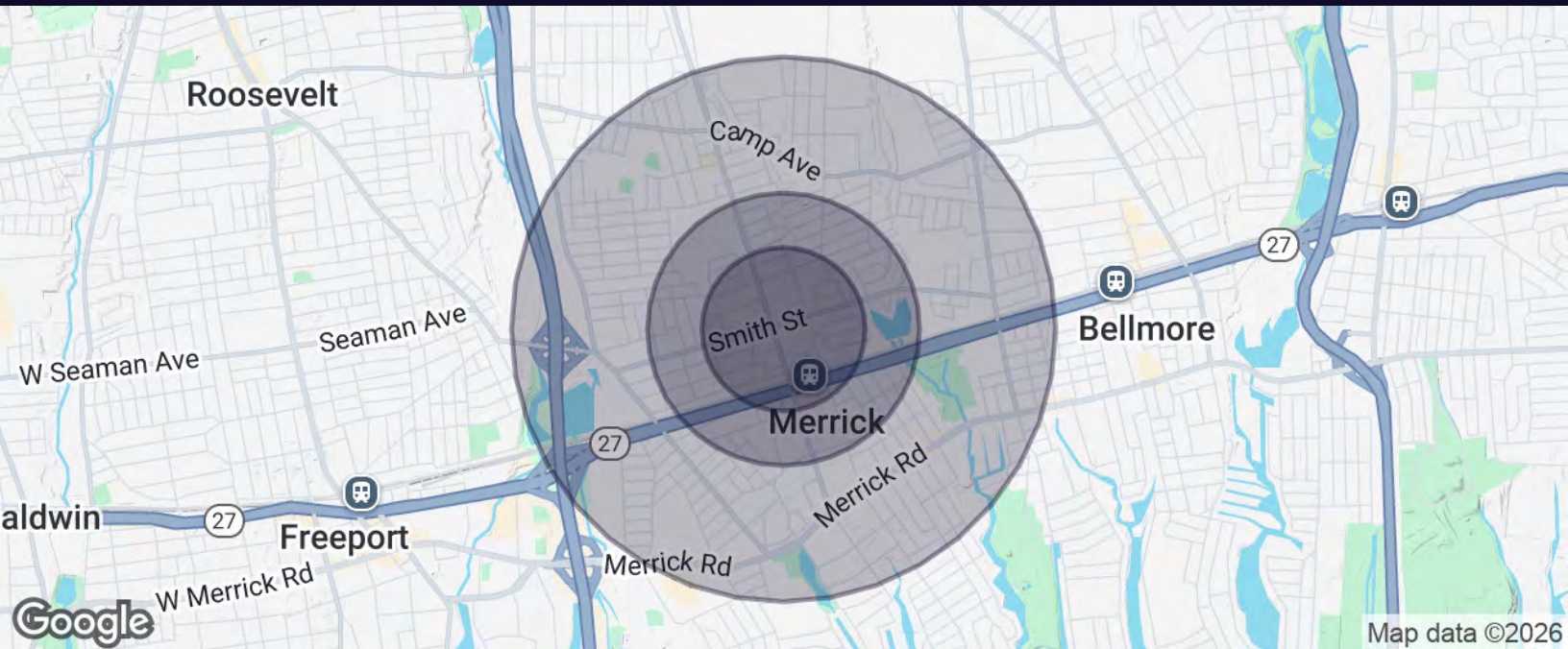
THE PROPERTY CONTAINED WITHIN THIS DOCUMENT IS BEING EXCLUSIVELY REPRESENTED BY DOUGLAS ELLIMAN REAL ESTATE COMMERCIAL DIVISION, 550 SMITHTOWN BYPASS STE. 117 SMITHTOWN, NY 11787 631.858.2405 © 2023 DOUGLAS ELLIMAN COMMERCIAL OF LI, LLC. ALL MATERIAL PRESENTED HEREIN IS INTENDED FOR INFORMATION PURPOSES ONLY. WHILE THIS INFORMATION IS BELIEVED TO BE CORRECT, IT IS REPRESENTED SUBJECT TO ERRORS, OMISSIONS, CHANGES OR WITHDRAWAL WITHOUT NOTICE. ALL PROPERTY INFORMATION, INCLUDING, BUT NOT LIMITED TO SQUARE FOOTAGE, ROOM COUNT, ZONING IN THE LISTING SHOULD BE VERIFIED BY YOUR OWN ATTORNEY, ARCHITECT OR ZONING EXPERT. IF YOUR PROPERTY IS CURRENTLY LISTED WITH ANOTHER REAL ESTATE BROKER, PLEASE DISREGARD THIS OFFER. IT IS NOT OUR INTENTION TO SOLICIT THE OFFERINGS OF OTHER REAL ESTATE BROKERS. WE COOPERATE WITH THEM FULLY. EQUAL HOUSING OPPORTUNITY.





# Prime End-Cap Restaurant Space for Lease

## 2124 Merrick Mall Merrick NY 11566



Population	0.3 Miles	0.5 Miles	1 Mile
Total Population	1,400	4,586	20,191
Average Age	44	44	43
Average Age (Male)	43	43	42
Average Age (Female)	45	44	44

Households & Income	0.3 Miles	0.5 Miles	1 Mile
Total Households	499	1,613	6,857
# of Persons per HH	2.8	2.8	2.9
Average HH Income	\$225,401	\$218,341	\$205,487
Average House Value	\$729,020	\$743,893	\$748,384

For More Information:



**Christopher Pesce**

Associate Broker  
Douglas Elliman Commercial - Long Island  
631.858.2470  
christopher.pesce@elliman.com



**Kenneth Hester**

Licensed Real Estate Salesperson  
Douglas Elliman Commercial - Long Island  
516.641.0342  
kenneth.hester@elliman.com

 **DouglasElliman**  
Commercial



[WWW.ELLIMANCOMMERCIAL.COM](http://WWW.ELLIMANCOMMERCIAL.COM)

THE PROPERTY CONTAINED WITHIN THIS DOCUMENT IS BEING EXCLUSIVELY REPRESENTED BY DOUGLAS ELLIMAN REAL ESTATE COMMERCIAL DIVISION, 550 SMITHTOWN BYPASS STE. 117 SMITHTOWN, NY 11787 631.858.2405 © 2023 DOUGLAS ELLIMAN COMMERCIAL OF LI, LLC. ALL MATERIAL PRESENTED HEREIN IS INTENDED FOR INFORMATION PURPOSES ONLY. WHILE THIS INFORMATION IS BELIEVED TO BE CORRECT, IT IS REPRESENTED SUBJECT TO ERRORS, OMISSIONS, CHANGES OR WITHDRAWAL WITHOUT NOTICE. ALL PROPERTY INFORMATION, INCLUDING, BUT NOT LIMITED TO SQUARE FOOTAGE, ROOM COUNT, ZONING IN THE LISTING SHOULD BE VERIFIED BY YOUR OWN ATTORNEY, ARCHITECT OR ZONING EXPERT. IF YOUR PROPERTY IS CURRENTLY LISTED WITH ANOTHER REAL ESTATE BROKER, PLEASE DISREGARD THIS OFFER. IT IS NOT OUR INTENTION TO SOLICIT THE OFFERINGS OF OTHER REAL ESTATE BROKERS. WE COOPERATE WITH THEM FULLY. EQUAL HOUSING OPPORTUNITY.