

## Commercial Land For Sale

10995 Highway 285 | Conifer, CO 80433

### Property Overview:

County	Jefferson
Lot Size	3.95 AC
Zoning	Commercial PUD-ODP
Sale Price:	<del>\$545,000</del> <b>\$485,000</b>

### Highlights:

- Retail/Commercial Land
- 3.95 Acres
- Frontage on Hwy 285
- Adjacent to Conifer Market Place
- Paved access roads

Contact

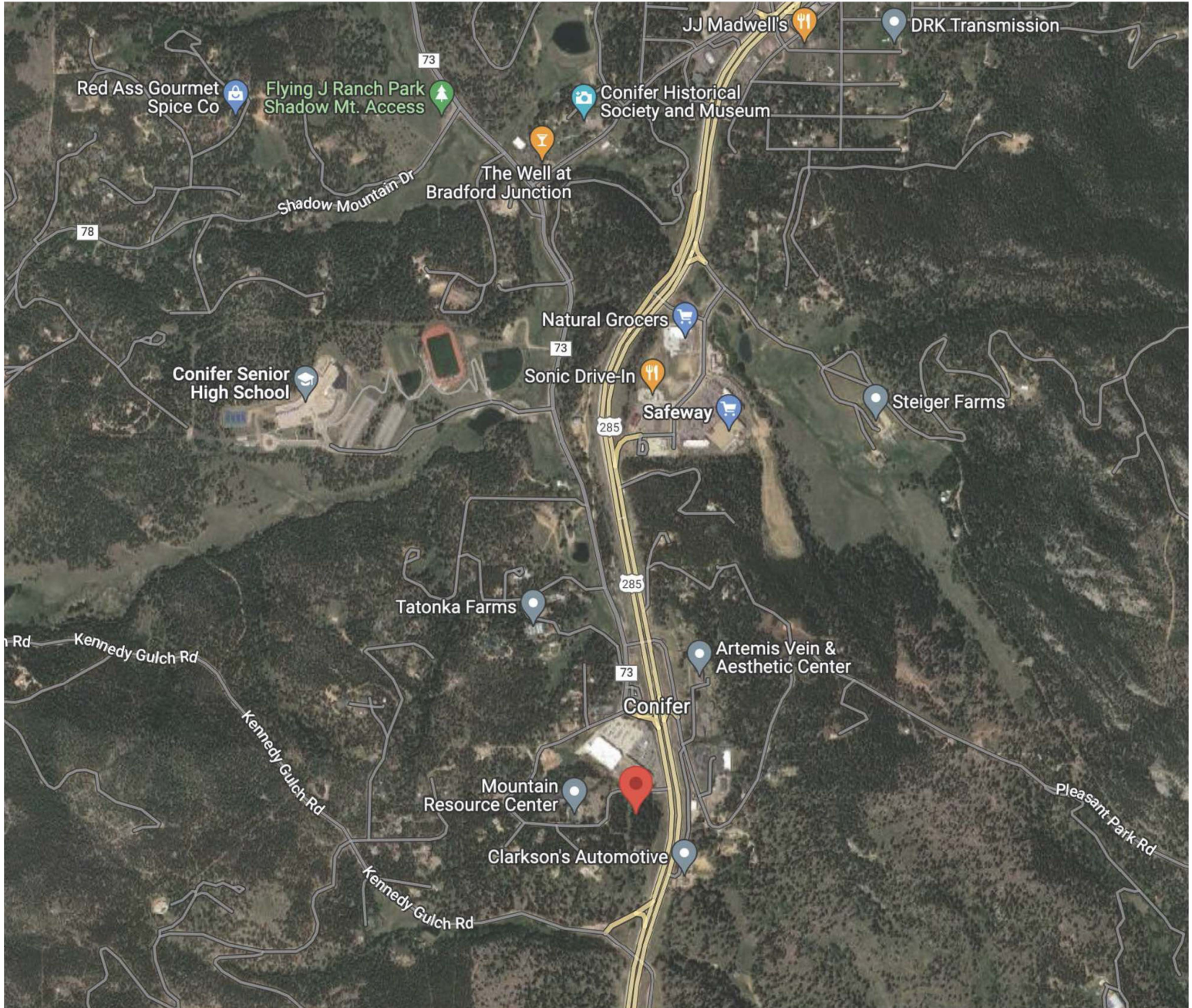


**Heather Taylor**  
Principal  
720.217.1315  
heather@impactcommercial.co



**Impact Commercial Real Estate**  
7000 S. Yosemite St., Ste 290  
Centennial, CO 80112  
720.608.4201  
www.impactcommercial.co





**Contact**



**Heather Taylor**  
Principal  
720.217.1315  
heather@impactcommercial.co