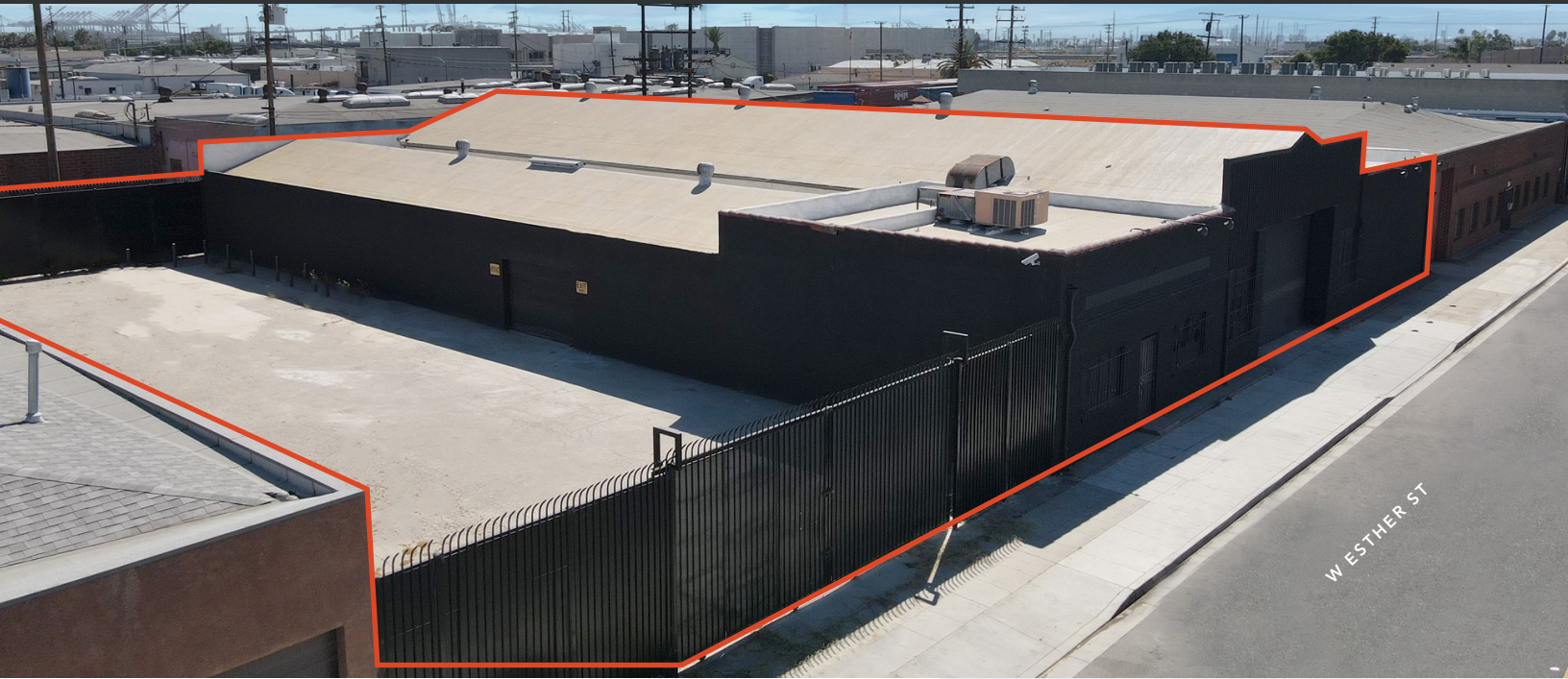


# FOR SALE

# 728-730 WESTHER ST

LONG BEACH, CA 90813



## Freestanding Industrial Building

13,655 SF warehouse on 21,344 SF of land

Clear Height 16'-20'

Zoning LBIG

Power 400A existing/2,000A upgrade approved (transformer already installed)

Fully renovated property

APN 7271-016-013

Loading two (2) oversized GL loading doors

Yard fenced and gated

Active Distribution Licenses - Cultivation license previously approved

Delivered vacant at COE

Purchase price \$3,500,000 (\$256.00 PSF)

13,655

SF BUILDING

\$3.5M

PURCHASE PRICE

16'-20'

CLEAR HEIGHT

IAN STEVENSON

310.906.3288

ian.stevenson@kidder.com

LIC N° 02045140

JEREMY BENLOULOU

818.867.9037

jeremy.benloulou@kidder.com

LIC N° 01925347

ALAN ABSELET

310.906.3278

alan.abselet@kidder.com

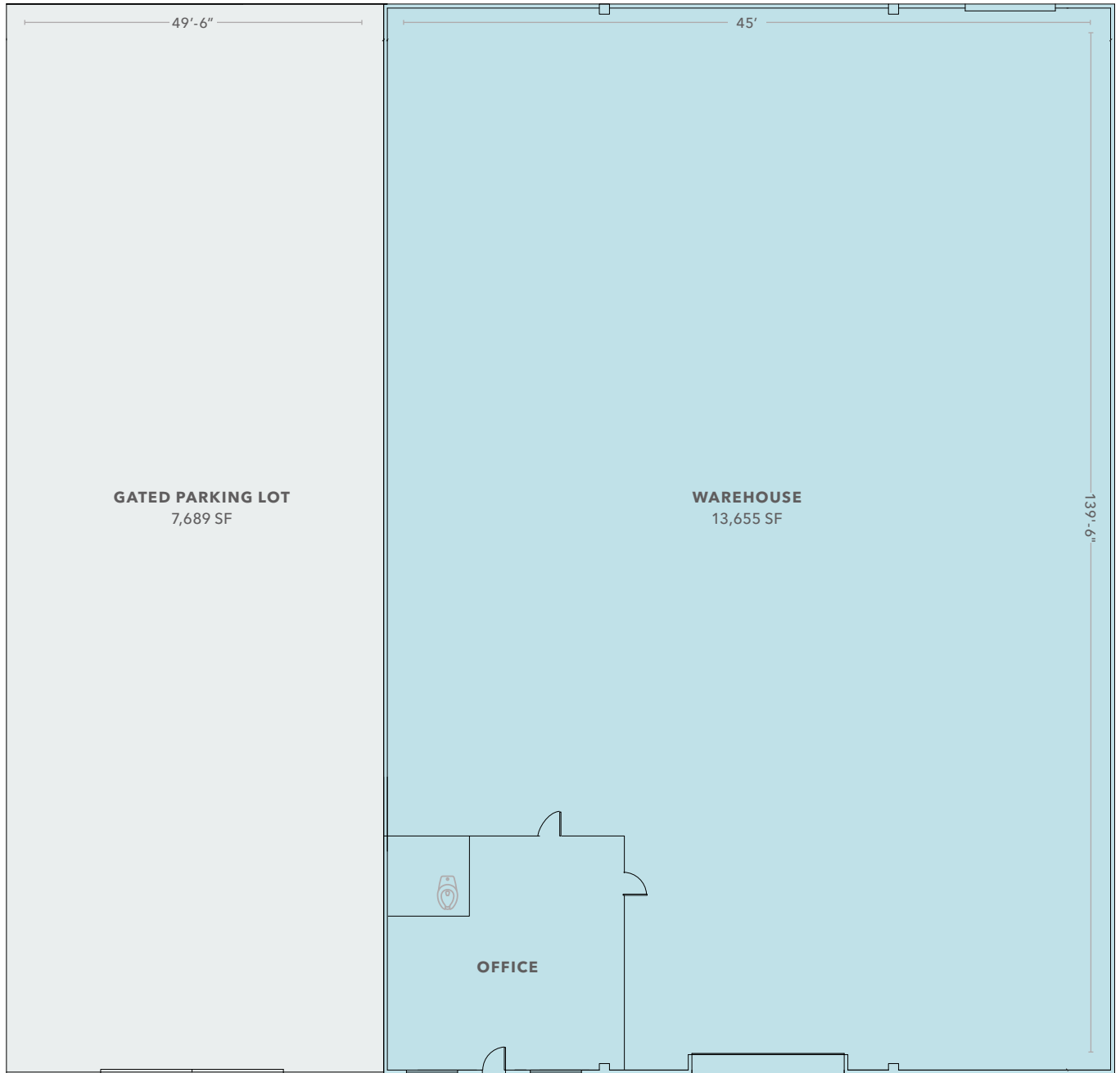
LIC N° 02203754

KIDDER.COM

This information supplied herein is from sources we deem reliable. It is provided without any representation, warranty, or guarantee, expressed or implied as to its accuracy. Prospective Buyer or Tenant should conduct an independent investigation and verification of all matters deemed to be material, including, but not limited to, statements of income and expenses. Consult your attorney, accountant, or other professional advisor.

**km** Kidder Mathews

# FLOOR PLAN



IAN STEVENSON 310.906.3288 | [ian.stevenson@kidder.com](mailto:ian.stevenson@kidder.com) | LIC N° 02045140

JEREMY BENLOULOU 818.867.9037 | [jeremy.benloulou@kidder.com](mailto:jeremy.benloulou@kidder.com) | LIC N° 01925347

ALAN ABSELET 310.906.3278 | [alan.abselet@kidder.com](mailto:alan.abselet@kidder.com) | LIC N° 02203754

[KIDDER.COM](http://KIDDER.COM)

This information supplied herein is from sources we deem reliable. It is provided without any representation, warranty, or guarantee, expressed or implied as to its accuracy. Prospective Buyer or Tenant should conduct an independent investigation and verification of all matters deemed to be material, including, but not limited to, statements of income and expenses. Consult your attorney, accountant, or other professional advisor.