



BILTMORE
TALON CENTER

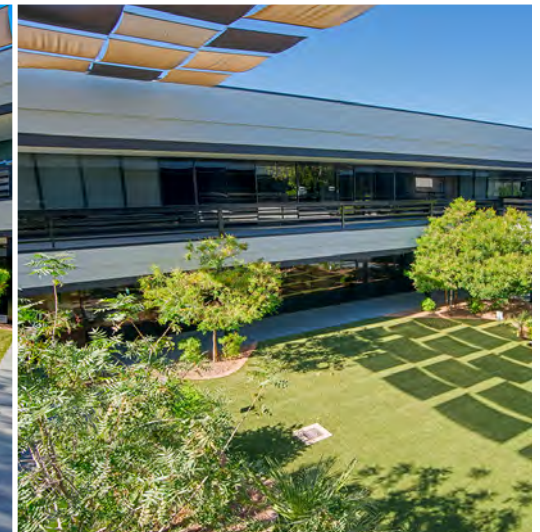


OFFICE / MEDICAL SPACE FOR LEASE
3333 E CAMELBACK RD, PHOENIX, AZ 85018



PROPERTY OVERVIEW

- Parking Ratio: 5/1,000 SF
- Total Project Size: ±96,248 SF
- 24-Hour Access
- Monument Signage
- Abundant Natural Light
- Great Covered Outdoor Seating
- Prestigious Camelback Corridor Location
- Abundant Covered Canopy Parking
- Restaraunt Coming Soon



LOCATION

BILTMORE FASHION CENTER

BILTMORE PLAZA SHOPPING CENTER

SAFEWAY

★BOBBY-Q★
Great Steaks ★ Real BBQ!

KEEGAN'S

zookz

Matt's
BIG
BREAKFAST

Hava Java

Starbucks

32

The Collins

CAMELBACK EAST VILLAGE

FIRST WATCH

The TAVERN

Jarbell's
RESTAURANT | WINE BAR | WINE STORE

Tomaso's

ups


BILTMORE
TALON CENTER

- Camelback Road Frontage
- Over 115 Restaurants Within a 2 Mile Radius
- Mountain View
- 13 Min to Phoenix Sky Harbor



RESTAURANT COMING SOON





FLOOR PLANS

1ST FLOOR

SUITE 170
3,091 RSF

SUITE 175
2,864 RSF

SUITE 160
1,576 RSF

SUITE 150
2,805 RSF

SUITE 140
3,680 RSF

**AKDHC
SUITE 167**
1,992 RSF

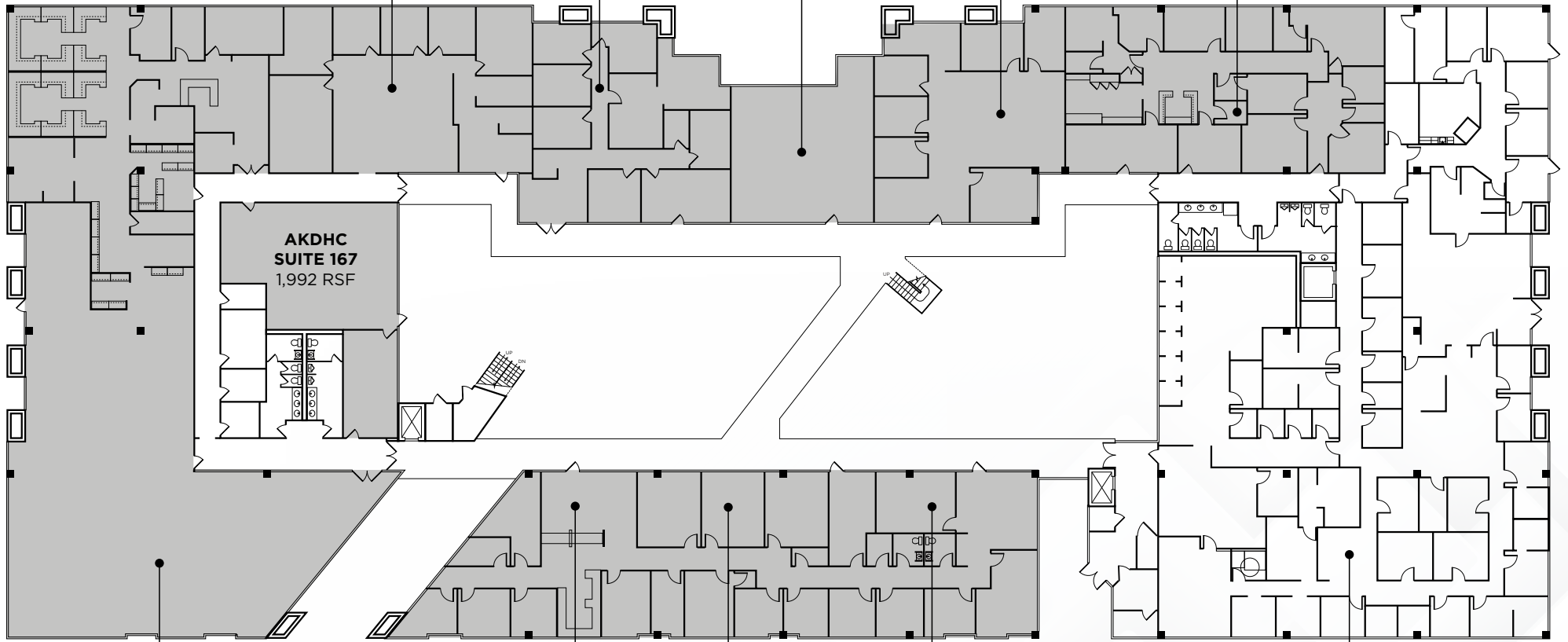
SUITE 180
13,097 RSF

SUITE 114
1,751 RSF

SUITE 111
2,699 RSF

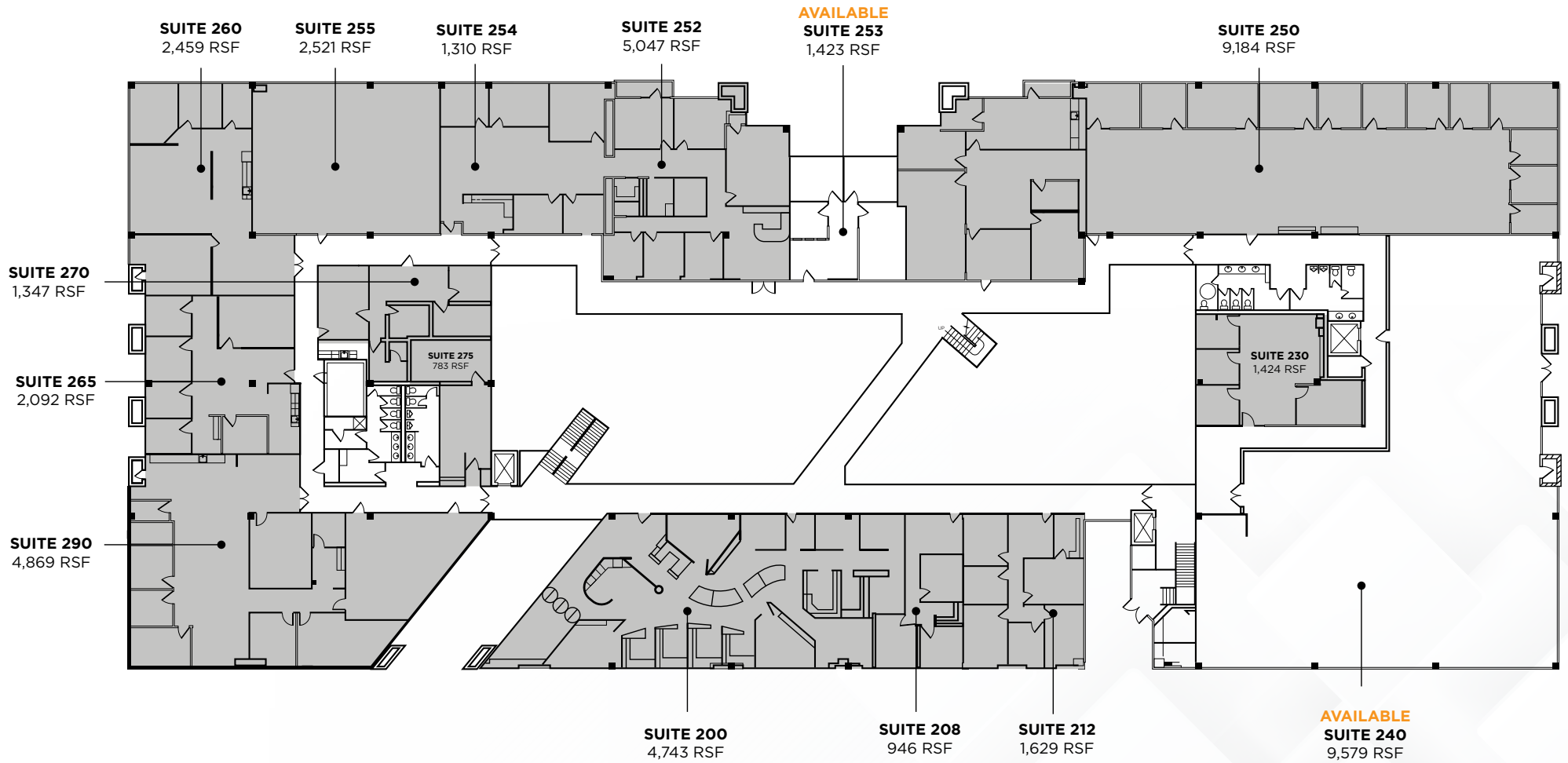
SUITE 110
2,558 RSF

AVAILABLE
SUITE 122
13,568 RSF





2ND FLOOR



 Suite 122





BILTMORE

TALON CENTER



For more information, please contact:

MICHAEL CRYSTAL

+1 602 229 5857

michael.crystal@cushwake.com

RYAN LAMBETH

+1 602 468 8570

ryan.lambeth@cushwake.com