



LAST PARCEL AT TANGLEWOOD SOUTH

HALSTEAD EXD AND TANGLEWOOD PARKWAY SOUTH, ELIZABETH CITY, NC 27909



LAST PARCEL AT TANGLEWOOD SOUTH

HALSTEAD EXD AND TANGLEWOOD PARKWAY SOUTH, ELIZABETH CITY, NC 27909

PROPERTY SUMMARY



PROPERTY DESCRIPTION

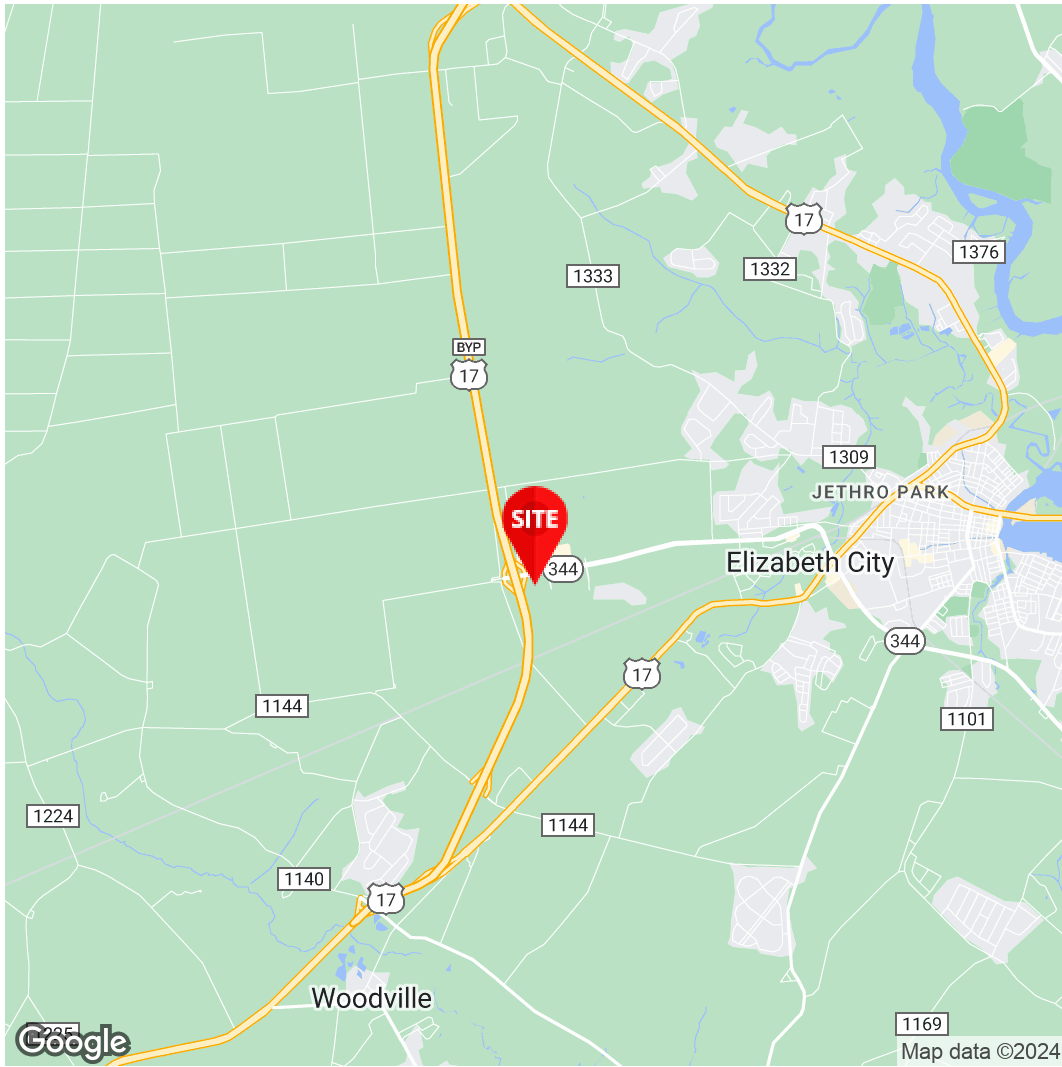
This last and most prominent of eight original parcels is strategically located at the intersection of Halstead Boulevard Extended and Route 17, the gateway to Elizabeth City, the rapidly growing commercial center for northeastern North Carolina. All public utilities and road access points are in place on site.

PROPERTY HIGHLIGHTS

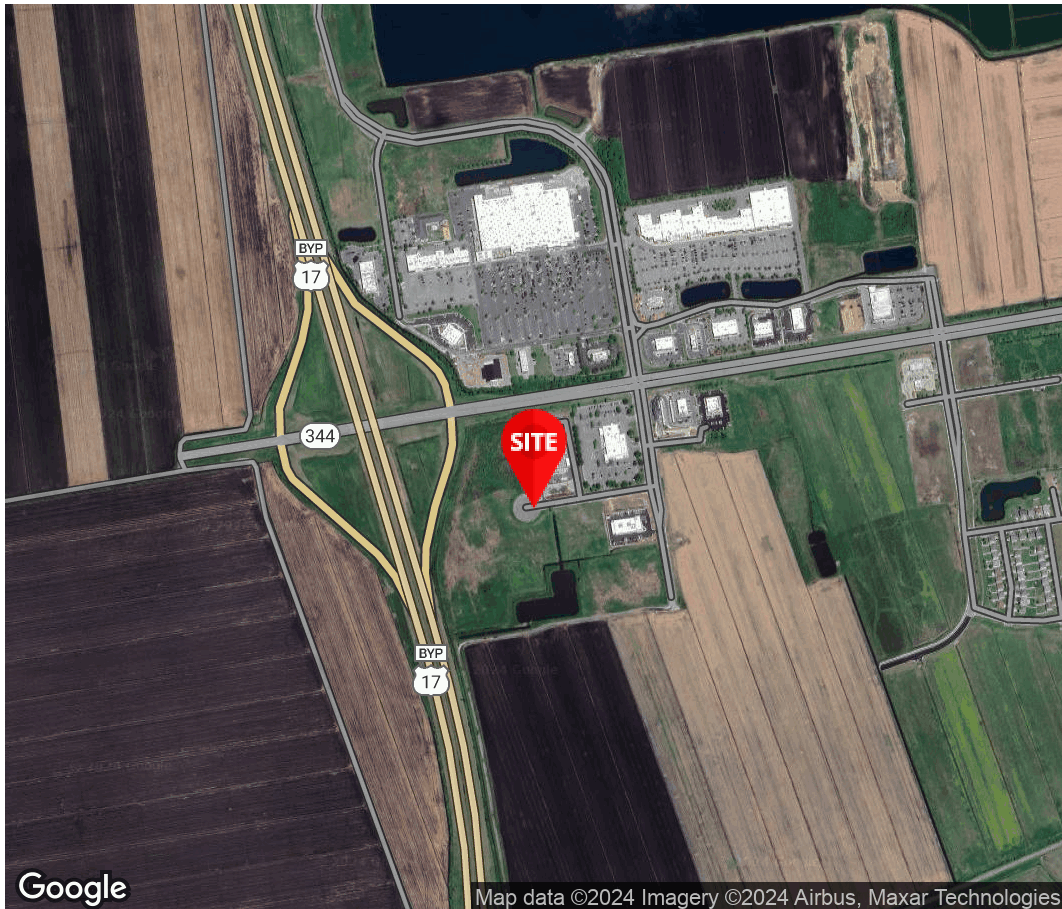
- Immediate neighbors include national brands Tractor Supply Company, Ashley Furniture, Caliber Collision, and a multifamily residential community. Abundant area retailers including Wal-Mart Supercenter, Hobby Lobby, Ross Dress for Less, TJ Maxx, Petco, and many more.
- New \$200 million Sentara Hospital and Medical Campus on 135 acres – the largest construction project in Elizabeth City in 60 years -- nearing completion one mile east, bringing 1,000 jobs and new visitor traffic to the corridor.
- Rapid residential growth of many product types: condominiums, apartments, and single-family homes by major regional and national homebuilders immediately adjacent.
- Zoned General Business (GB), which permits a wide range of commercial uses.



Located less than 2 miles from the new Sentara hospital



Dave Redmond
Senior Vice President
757.333.4310
dredmond@divaris.com



The information contained herein should be considered confidential and remains the sole property of Divaris Real Estate, Inc. at all times. Although every effort has been made to ensure accuracy, no liability will be accepted for any errors or omissions. Disclosure of any information contained herein is prohibited except with the express written permission of Divaris Real Estate, Inc.