

59-07 MAURICE AVE MASPETH, QUEENS

NEW YORK CITY: AT LIE, MAURICE AVE & BORDEN AVE

JOIN:



MAURICE AVE SHOPS

VISIBLE AND ACCESSIBLE FROM THE LONG ISLAND EXPRESSWAY
PYLON SIGN WITH TENANT SIGNAGE VISIBLE TO THE LIE AS WELL

LAST
AVAILABILITY
IN CENTER

1,320 SF



CONTACT EXCLUSIVE AGENTS

GREG BATISTA

gbatista@ripcony.com
516.933.8880

SCOTT ROTHSTEIN

srothstein@ripcony.com
718.704.1450

PETER RIPKA

pripka@ripcony.com
212.750.6565

BRIAN KRAKOWER

bkrakower@ripcony.com
718.663.2656

MICHELLE ABRAMOV

mabramov@ripcony.com
718.663.2652

RIPCO
REAL ESTATE

80-02 Kew Gardens Rd
3rd Floor
Queens, NY 11415
212.750.6565

Please visit us at ripcony.com for more information

This information has been secured from sources we believe to be reliable, but we make no representations as to the accuracy of the information. References to square footage are approximate. Buyer must verify the information and bears all risk for any inaccuracies.

RENDERING

LOOKING FROM THE HOME DEPOT ENTRANCE



EXTERIOR PHOTOS



EXTERIOR PHOTOS

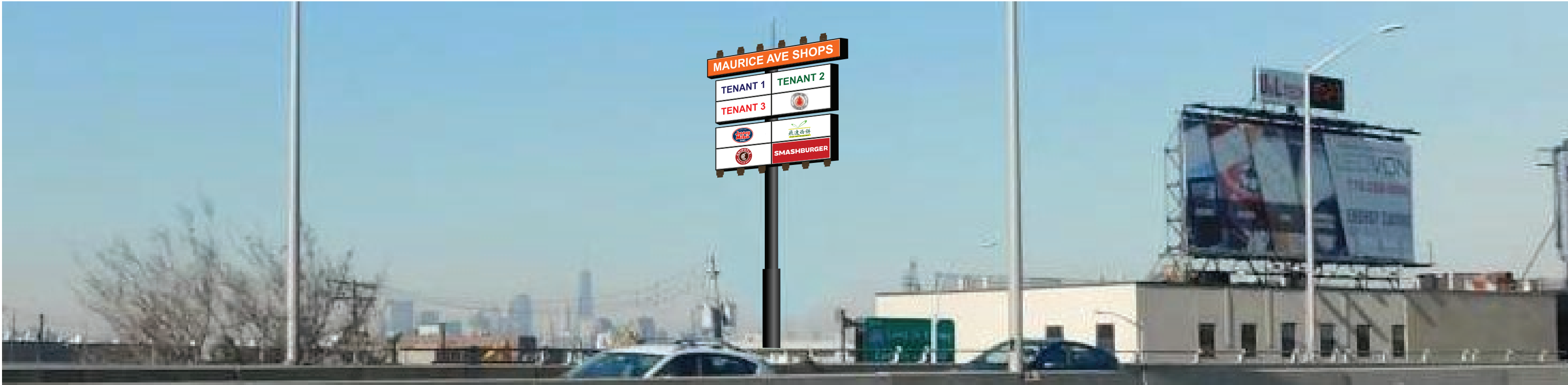


PYLON VIEWS:

EASTBOUND - LONG ISLAND EXPRESSWAY



WESTBOUND - LONG ISLAND EXPRESSWAY



LEASE PLAN



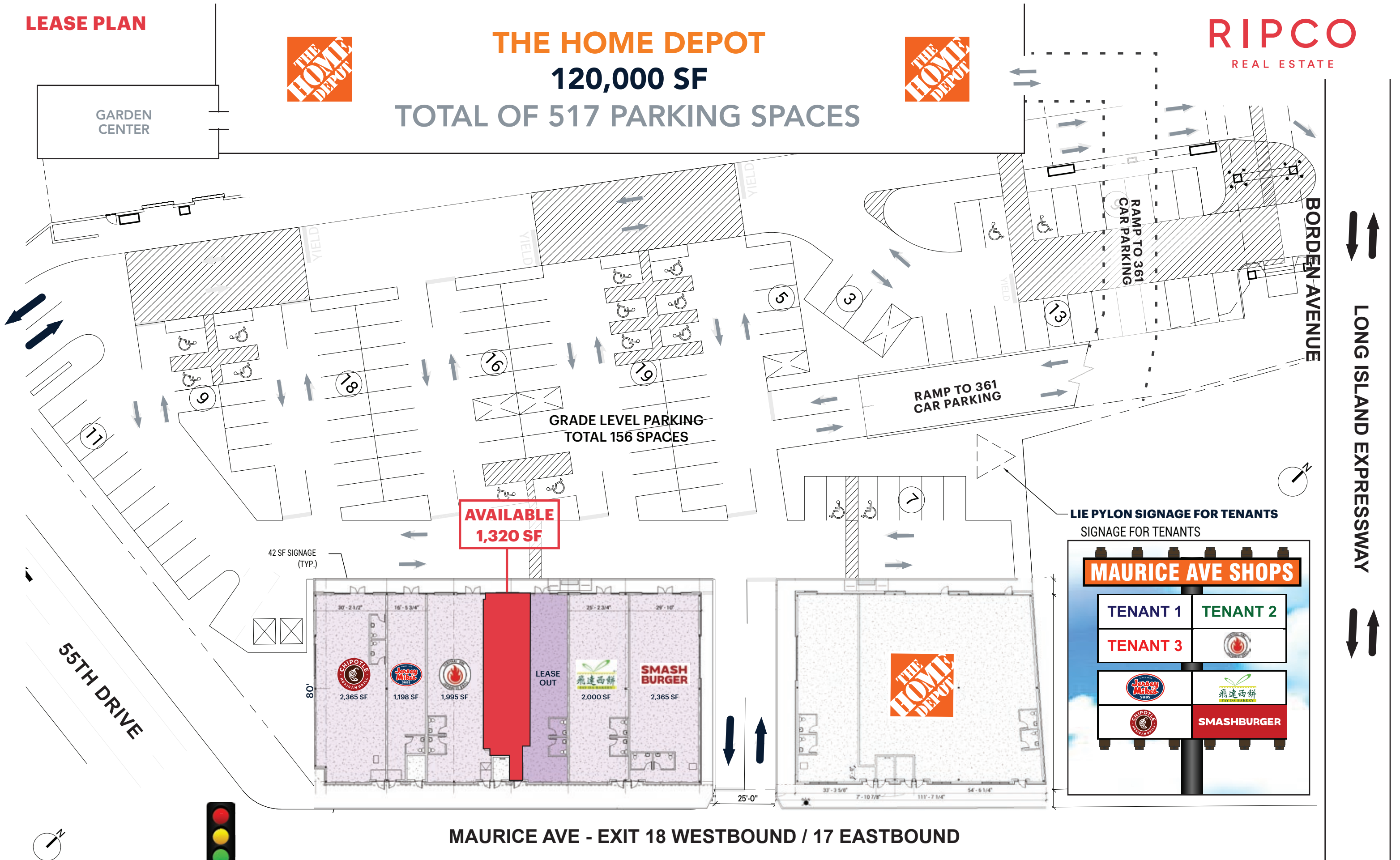
THE HOME DEPOT

120,000 SF

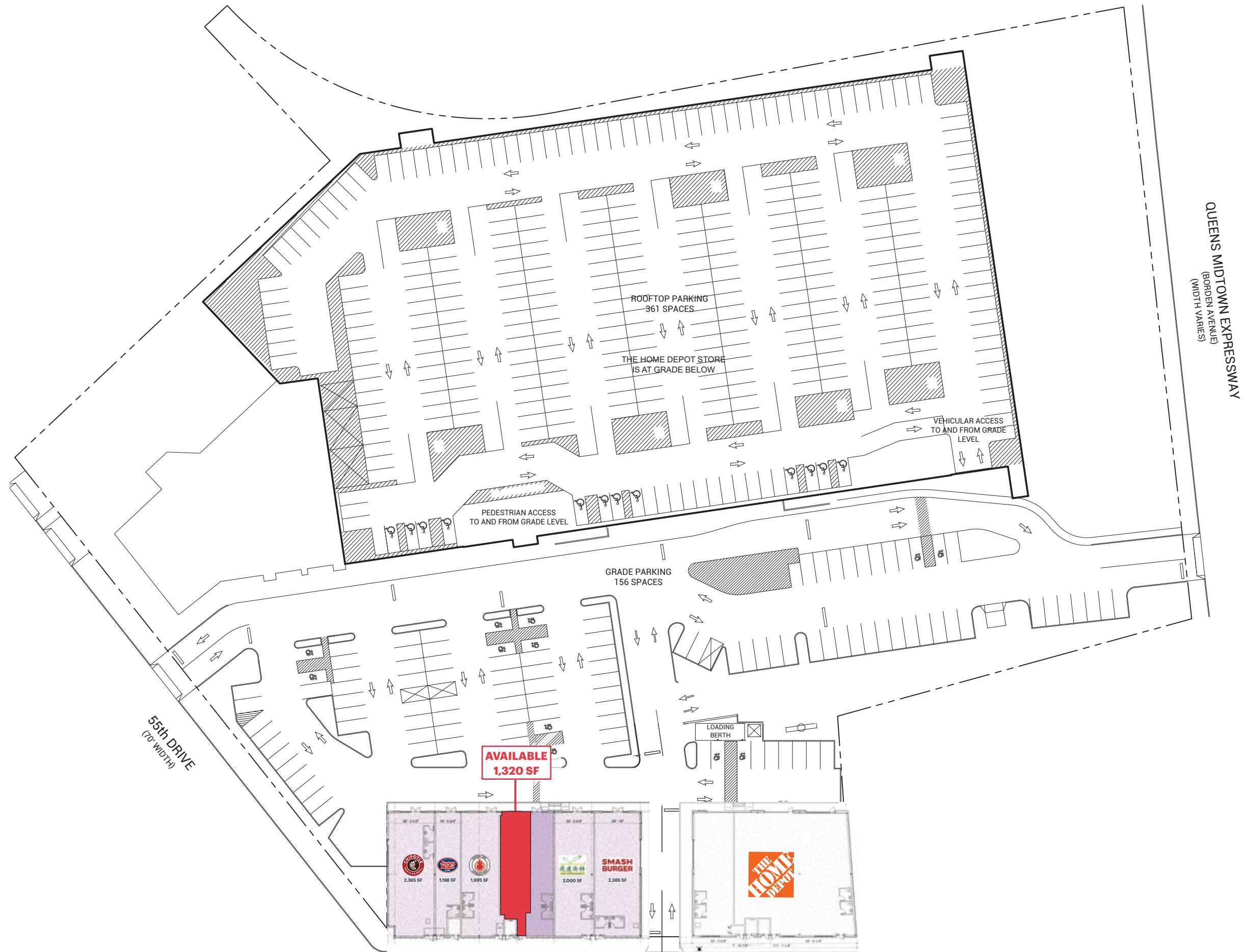
TOTAL OF 517 PARKING SPACES



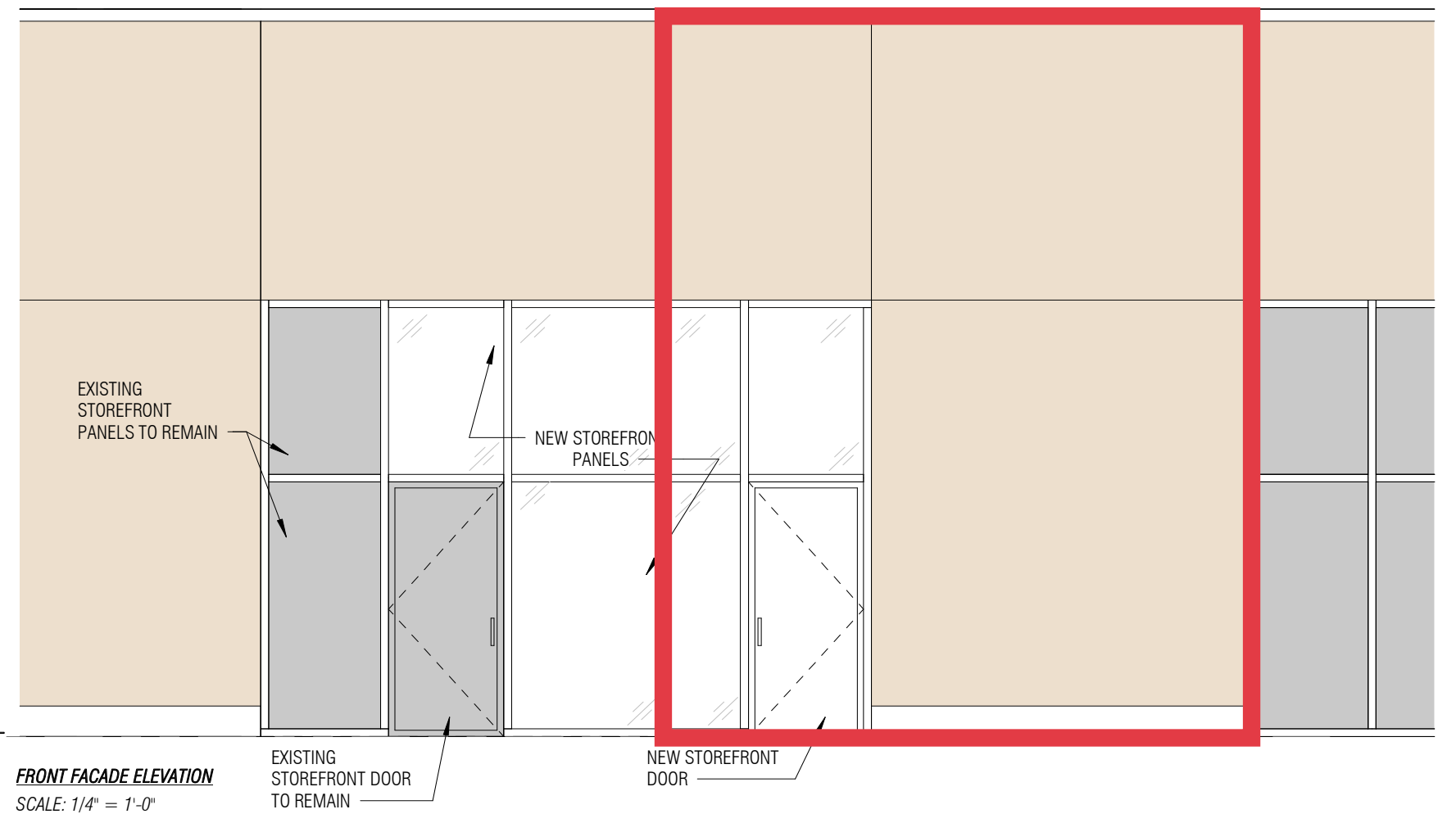
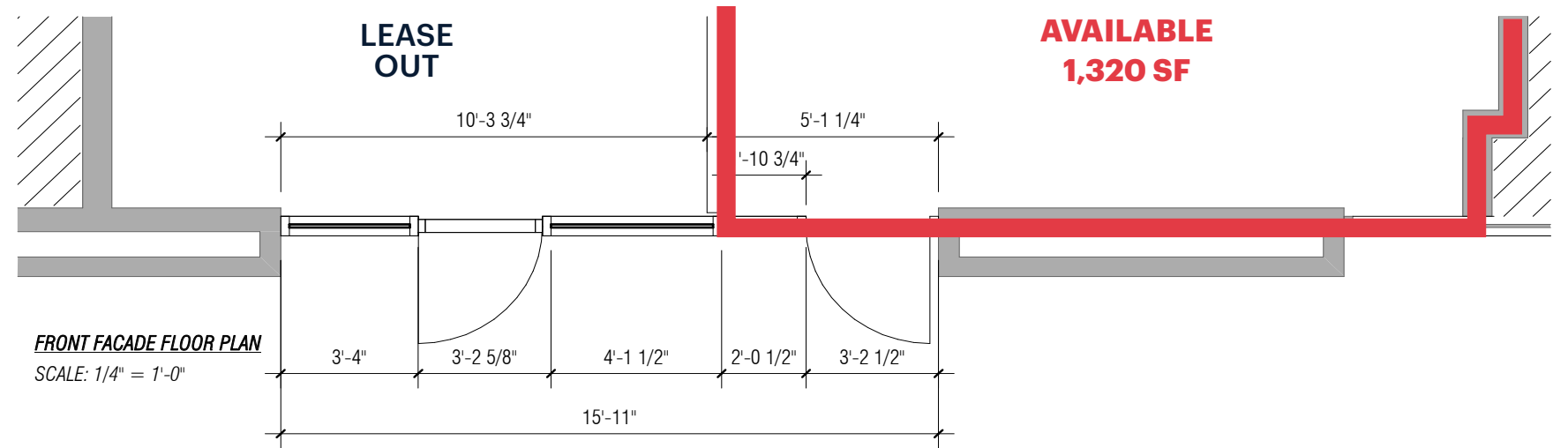
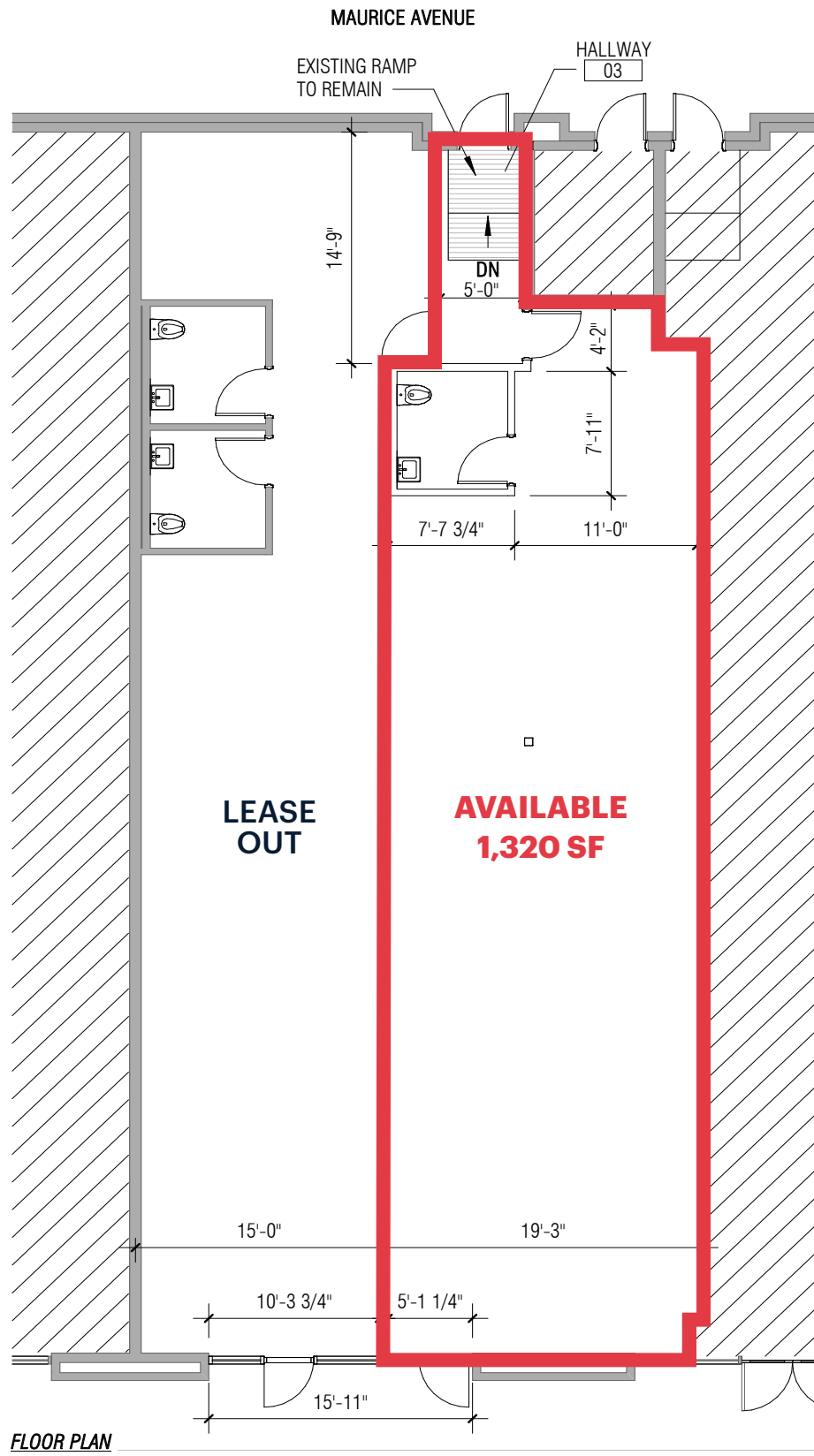
RIPCO
REAL ESTATE



PARKING PLAN



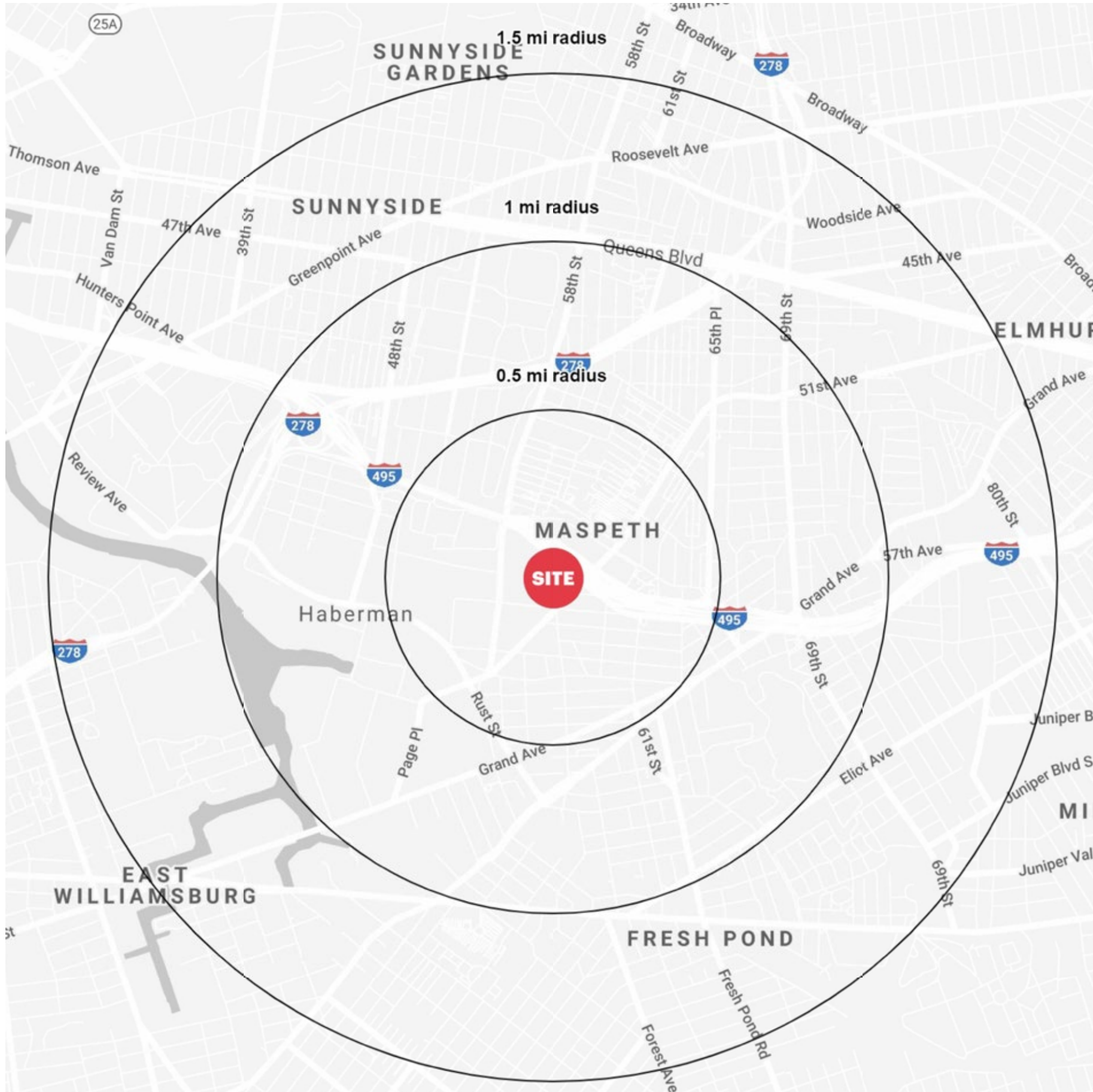
FLOOR PLAN



ACCESS AERIAL



AREA DEMOGRAPHICS



1/2 MILE RADIUS

POPULATION

6,991

HOUSEHOLDS

2,695

AVERAGE HOUSEHOLD INCOME

\$98,823

MEDIAN HOUSEHOLD INCOME

\$79,988

COLLEGE GRADUATES (Bachelor's +)

1,444 - 28.7%

TOTAL BUSINESSES

350

TOTAL EMPLOYEES

10,684

DAYTIME POPULATION (w/ 16 yr +)

12,843

1 MILE RADIUS

POPULATION

52,837

HOUSEHOLDS

18,882

AVERAGE HOUSEHOLD INCOME

\$88,646

MEDIAN HOUSEHOLD INCOME

\$71,037

COLLEGE GRADUATES (Bachelor's +)

9,991 - 26.5%

TOTAL BUSINESSES

1,609

TOTAL EMPLOYEES

22,280

DAYTIME POPULATION (w/ 16 yr +)

37,369

1 1/2 MILE RADIUS

POPULATION

180,394

HOUSEHOLDS

66,401

AVERAGE HOUSEHOLD INCOME

\$84,369

MEDIAN HOUSEHOLD INCOME

\$68,717

COLLEGE GRADUATES (Bachelor's +)

41,805 - 31.7%

TOTAL BUSINESSES

4,818

TOTAL EMPLOYEES

45,693

DAYTIME POPULATION (w/ 16 yr +)

97,000

POWER OF HOME DEPOT AS AN ANCHOR

United States
330 million people



1,984 Stores



1,727 Stores

FLOOR & DECOR

120 Stores

Total: 3,831 Stores
1 store for every 86,139.38 people

Queens
2.3 million people



8 Stores*



0 Stores

FLOOR & DECOR

0 Stores

Total: 8 Stores
1 store for every 287,000 people

***Maspeth will be the 8th Home Depot Store in Queens**