

naislect.com

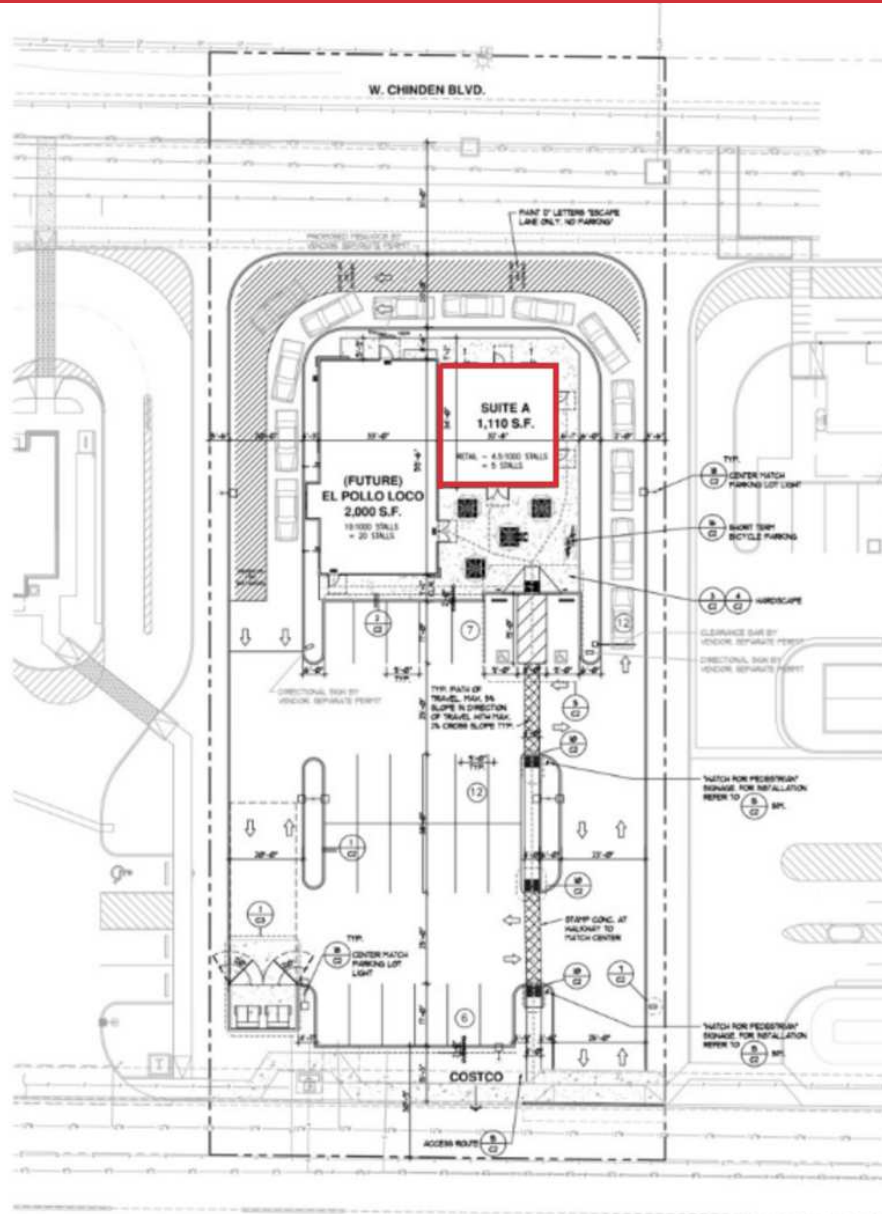


COSTCO MERIDIAN SHOPPING CENTER

FOR LEASE

3485 W. Chinden Blvd.
Meridian, ID 83646

NAISelect



PROPERTY INFORMATION

PROPERTY TYPE	Retail
LEASE RATE	Negotiable
AVAILABLE SPACE	±1,110 SF
ADDRESS	3485 W. Chinden Blvd. Meridian, ID 83646
LEASE TERM	Negotiable
LEASE TYPE	NNN

HIGHLIGHTS

- ±1,110 SF retail suite available in a new 2026 construction strip center
- Located within a high-traffic, Costco-anchored shopping center in Meridian
- Prime frontage on Chinden Blvd (Hwy 20/26) with ±29,000 VPD exposure
- Signalized intersection with excellent visibility and easy access
- Strong co-tenancy with national and regional retailers and restaurants
- Ample shared parking with cross-access throughout the center
- Positioned in a rapidly growing area with surrounding development

This information was obtained from sources believed reliable but cannot be guaranteed and is subject to change at any time. Any opinions or estimates are used for example only.

TRAVIS DUNN

208.229.6005 | travis@naiselect.com

RILEY WIEDMEIER, MBA

208.954.2229 | riley@naiselect.com

MIKE ERKMANN, CCIM

208.229.6015 | mike@naiselect.com



Cafe Rio
Batteries + Bulbs
THE JOINT chiropractic
CHOCOLATE FACTORY

MOUNTAIN AMERICA CREDIT UNION

BURGER KING

COSTCO WHOLESALE

SITE

Swig

KeyBank

Dutch Bros

SLIM CHICKENS

FIREHOUSE SUBS
MATTRESS FIRM

COSTCO GASOLINE

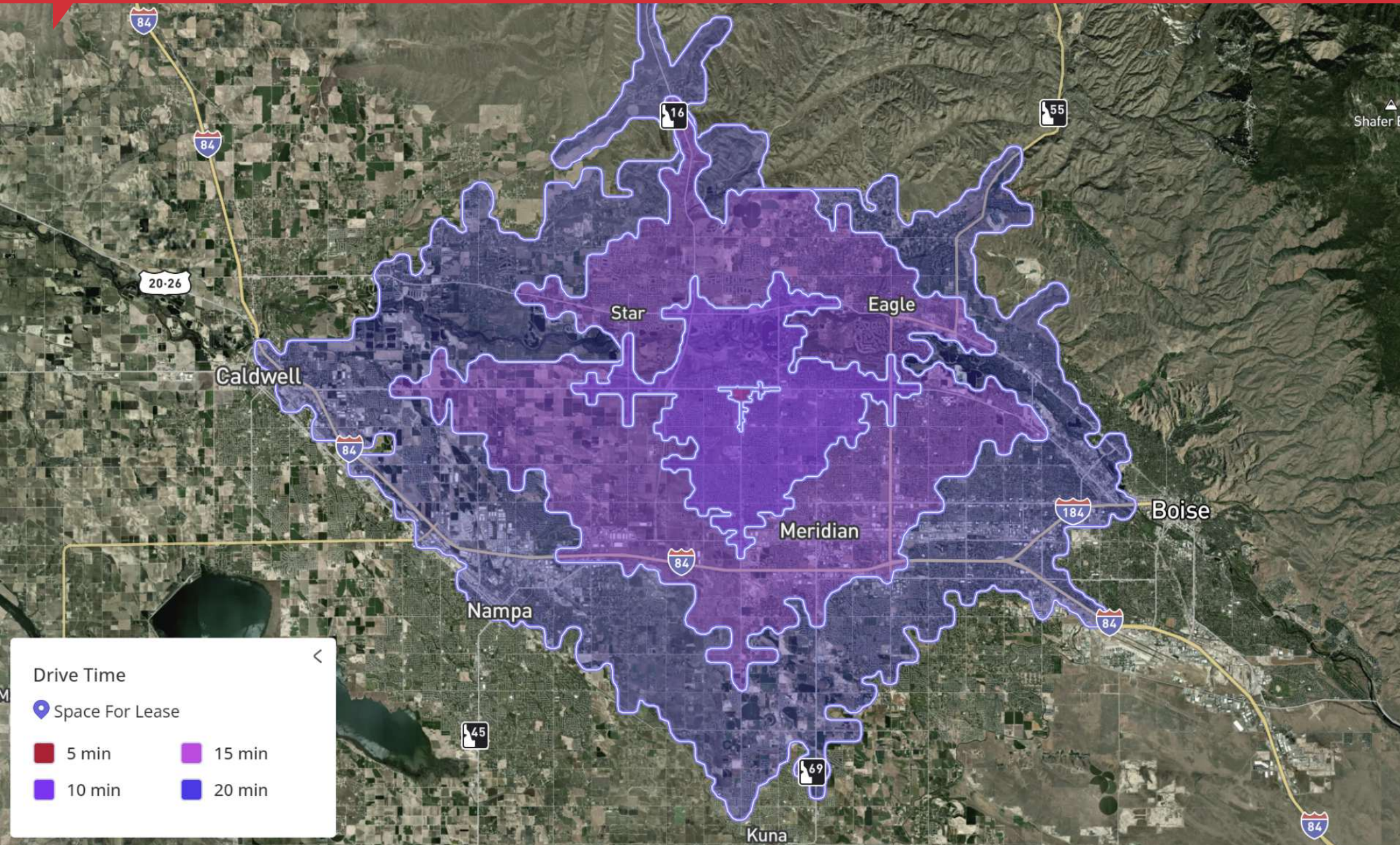
Ten Mile Rd
12,800 VPD

Chinden Blvd
HWY 20/26
21,200 VPD

TRAVIS DUNN
208.229.6005 | travis@naiselect.com

RILEY WIEDMEIER, MBA
208.954.2229 | riley@naiselect.com

MIKE ERKMANN, CCIM
208.229.6015 | mike@naiselect.com



TRAVIS DUNN

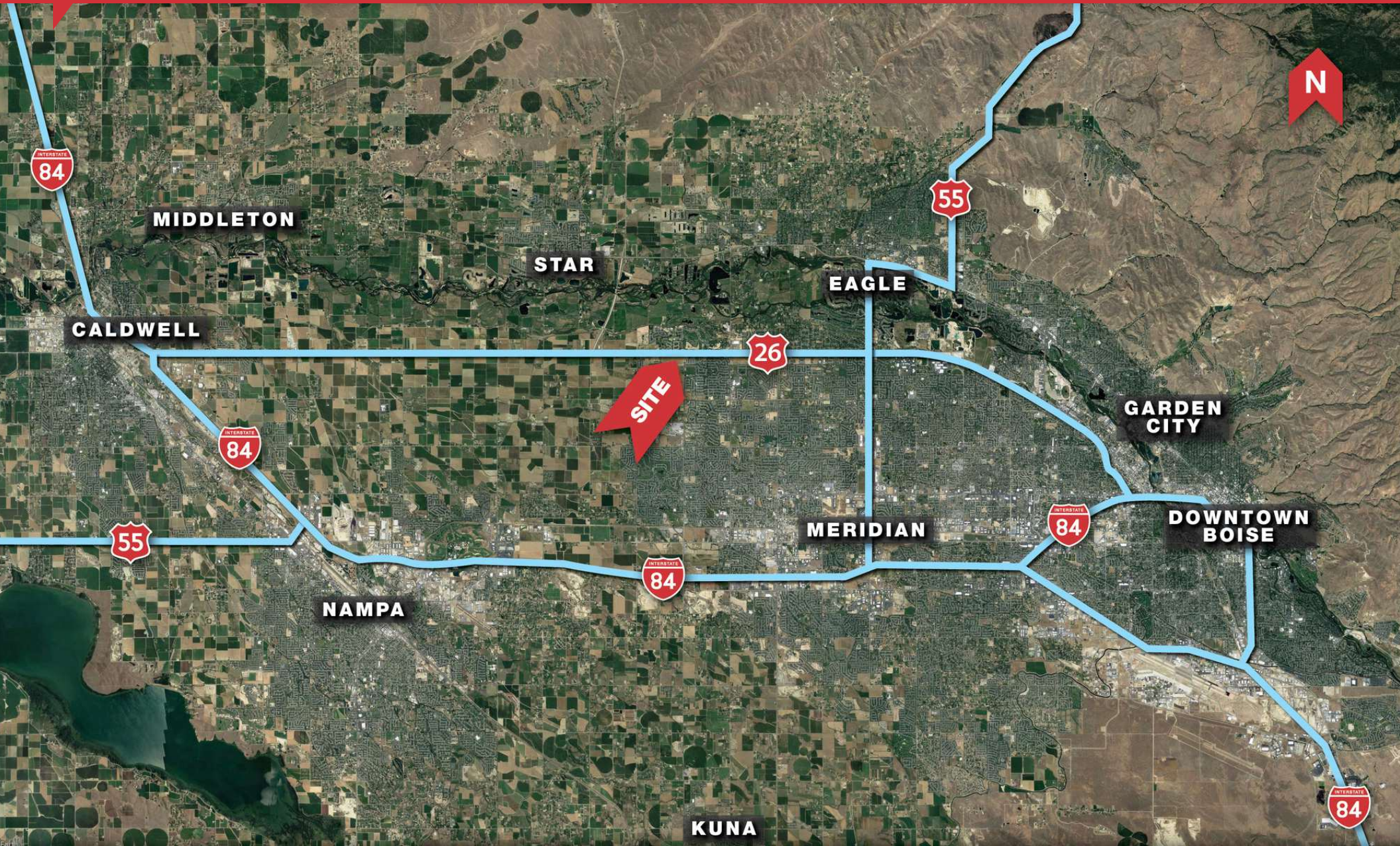
208.229.6005 | travis@naiselect.com

RILEY WIEDMEIER, MBA

208.954.2229 | riley@naiselect.com

MIKE ERKMANN, CCIM

208.229.6015 | mike@naiselect.com



TRAVIS DUNN

208.229.6005 | travis@naiselect.com

RILEY WIEDMEIER, MBA

208.954.2229 | riley@naiselect.com

MIKE ERKMANN, CCIM

208.229.6015 | mike@naiselect.com