



BUILDING SOUCIE

2 et 6, boulevard Desaulniers, St-Lambert, Québec

OFFICE SPACE FOR RENT

Approximately 1650 sq ft



Landmark building of St-Lambert's commercial district

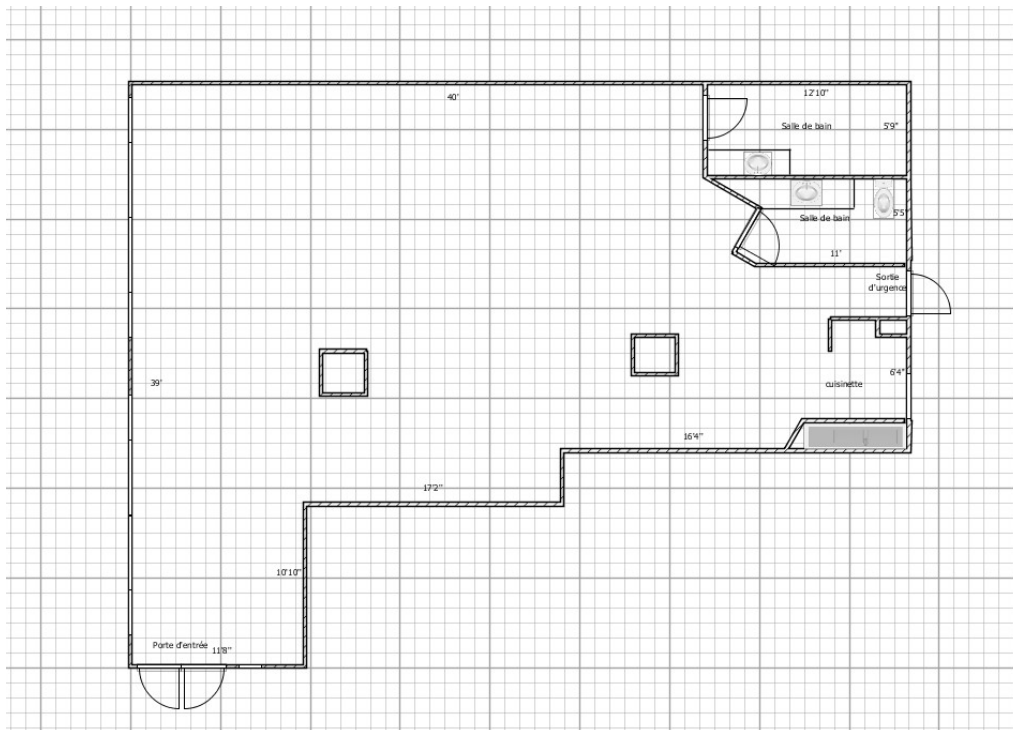
High volume of customers due to strategic location of the building with instant access to Victoria bridge and Highway-132; minutes away from downtown Montreal

Direct access to abundant amenities such as great restaurants, cafés, boutiques, banking services, etc.

1650 ft2 of open space ready to be finished with complete bathrooms and kitchenette

Available now / Visits are made in respect with public health recommandations

SPACE PLAN





BUILDING SOUCIE

2 et 6, boulevard Desaulniers, St-Lambert, Québec

OFFICE SPACE FOR RENT

Approximately 1650 sq ft

MORE INFORMATIONS

CHARACTERISTICS

- Located on the Groundfloor of a 6-storey building with a terrasse on the roof
- 1650 ft² of open space ready to be finished
- Finished bathrooms and kitchenette
- Completely refurbished ventilation equipment
- Brand new central heat pump and refurbished dedicated 400-amp electrical panel
- Universal access entrance

ADVANTAGES

- Vast storefront commercial/office space of 1650 ft²
- Are included 2 display spaces for an excellent visibility on the corner of Desaulniers boul. and Victoria st.
- Located in a Class B building and administrated by its owners-mangers
- Competitive price

NEIGHBORHOOD

- Health care professionals
- Specialized dental centers
- Law firms, financial specialists
- Businesses at street level



REAL-ESTATE OWNERS &
MANAGER

2, Desaulniers Boulevard, Suite 102
Saint-Lambert, Quebec J4P 1L2

T. 450-671-3111
www.brixix.ca

FOR INFORMATION

Malika Brixix
malika.brixix@brixix.ca

T. 450-671-3111