

1515 EL CAMINO REAL

PALO ALTO, CA, 94306

AVAILABLE:

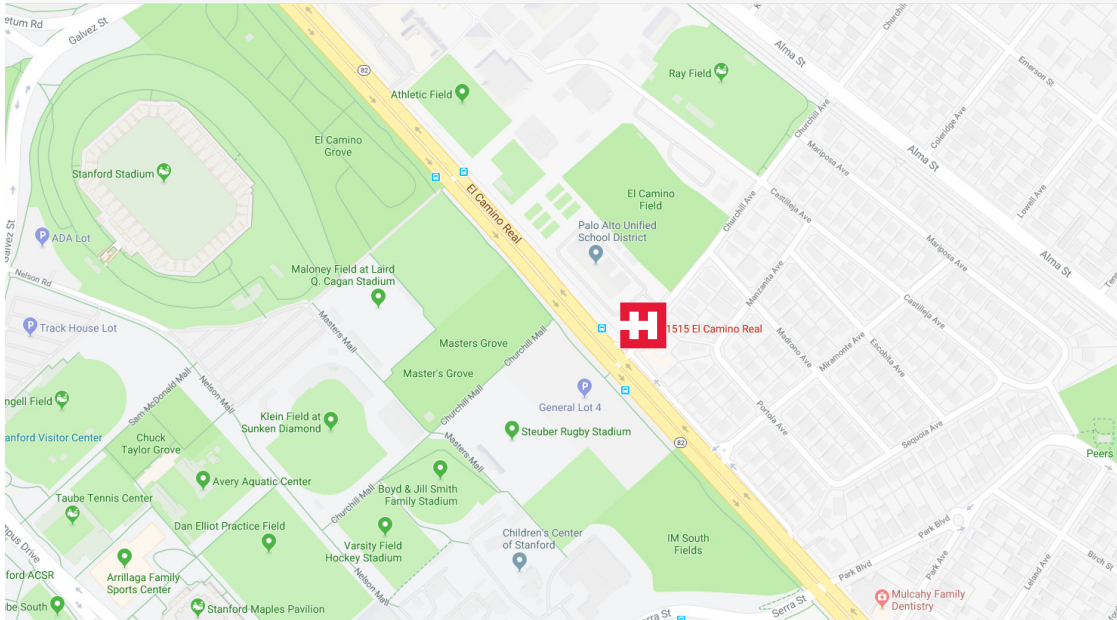
Medical Office

Suite C: ±1,159 SF

Suite D: ±1,156 SF

LEASE RATE:

\$6.50 SF NNN



For Further Information,
Please Contact:

Eric Rafia
408-457-8808
eric@healthmedrealty.com
Lic. 01383075

Eric Yeung
408-457-8806
eric@healthmedrealty.com
Lic. 01937075

FEATURES:

- » High End Medical Office Improvements
- » On and Off-Street Parking
- » Central Palo Alto Location
- » Other Tenants in the Project Include:
 - » Plastic Surgery Center Palo Alto (AAAASF Certified ASC)
 - » Dr. Seung Kim, Plastic Surgeon
 - » Dr. Vistnes, Plastic Surgeon

 **HealthMedRealty**

HealthMed Realty
690 Saratoga Avenue
Suite 200
San Jose, CA 95129
408.217.6000 T
408.457.8803 F
www.healthmedrealty.com
Lic. 01902032

No warranty or representation, express or implied is made as to the accuracy of the information contained herein, and the same is submitted subject to errors, omissions, changes of price, rental or other conditions, withdrawal without notice.

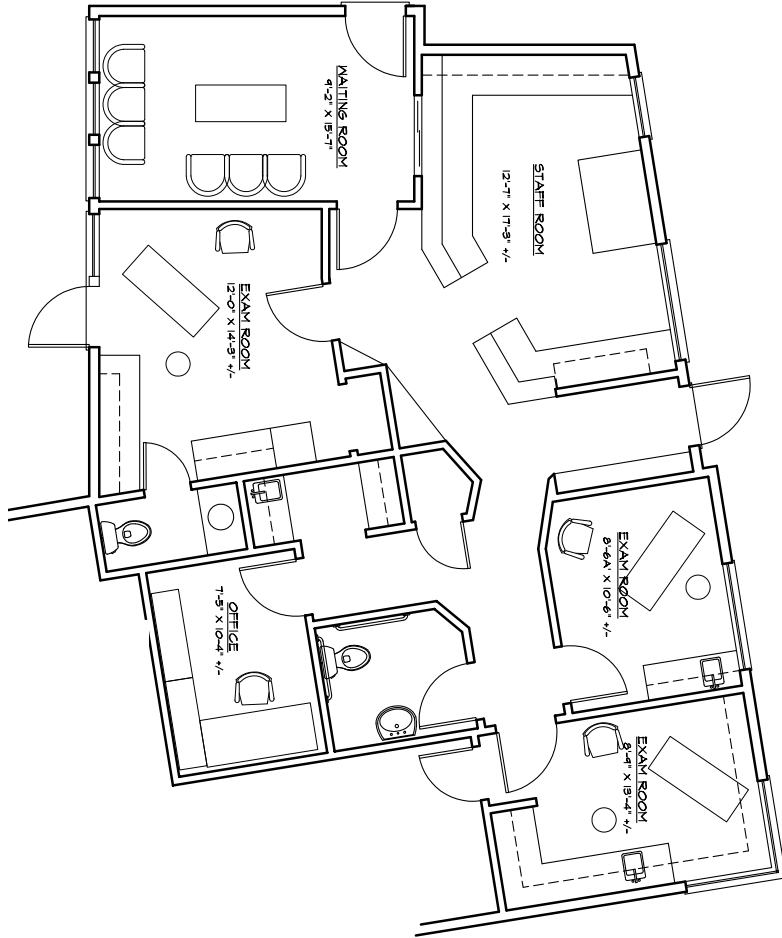


1515 EL CAMINO REAL

PALO ALTO, CA, 94306

Suite C:

±1,159 RSF



Not to scale. All dimensions are approximate.



For Further Information, Please Contact:

Eric Rafia

408-457-8808

eric@healthmedrealty.com

Lic. 01383075

Eric Yeung

408-457-8806

eric@healthmedrealty.com

Lic. 01937705

HealthMed Realty

690 Saratoga Avenue

Suite 200

San Jose, CA 95129

408.217.6000 T

408.457.8803 F

www.healthmedrealty.com

Lic. 01902032



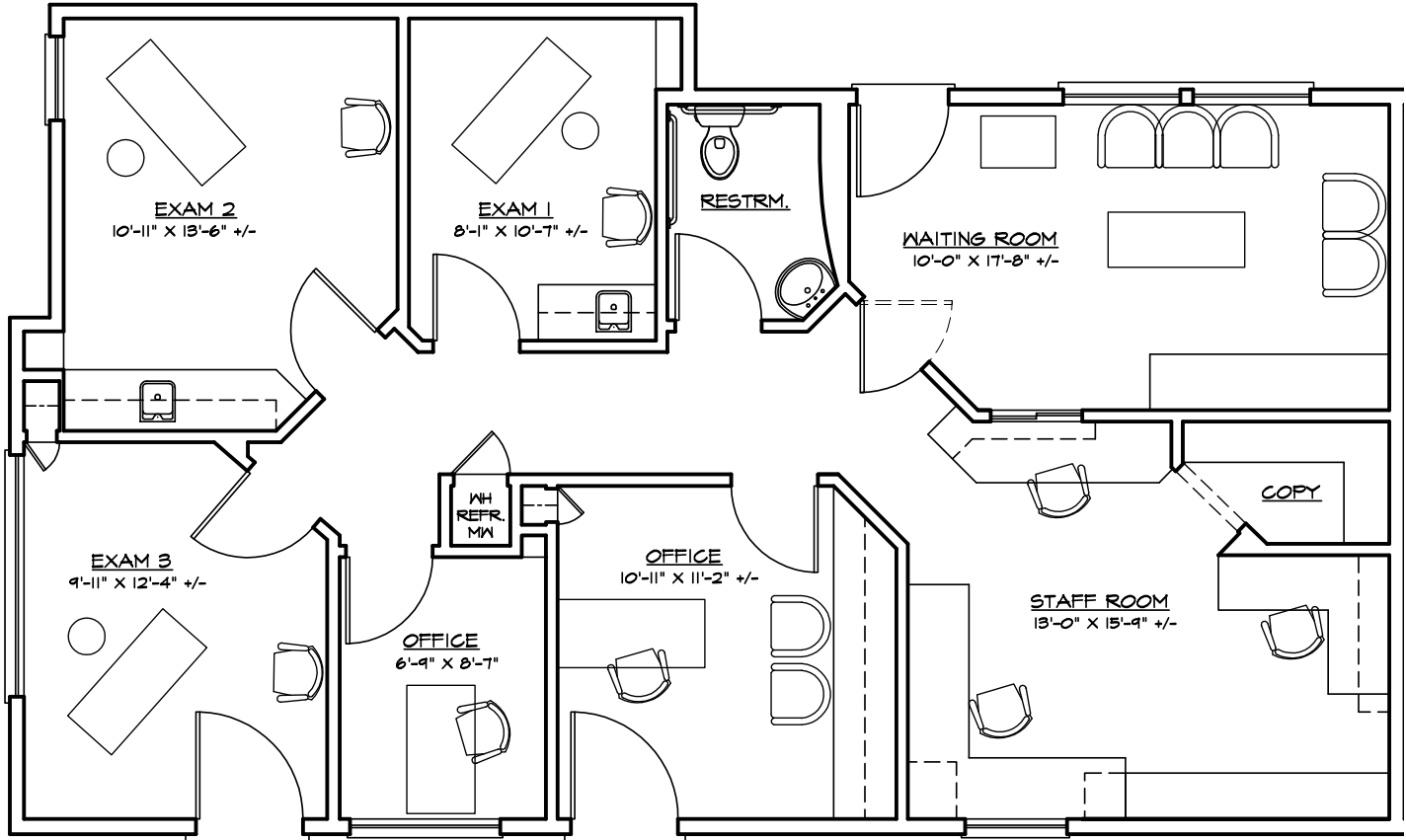
1515 EL CAMINO REAL

PALO ALTO, CA, 94306



Suite D:

±1,156 RSF



Not to scale. All dimensions are approximate.



For Further Information, Please Contact:

Eric Rafia
408-457-8808
eric@healthmedrealty.com
Lic. 01383075

Eric Yeung
408-457-8806
eric@healthmedrealty.com
Lic. 01937705

HealthMed Realty
690 Saratoga Avenue
Suite 200
San Jose, CA 95129
408.217.6000 T
408.457.8803 F
www.healthmedrealty.com
Lic. 01902032