

# Auto/Flex Building with Yard | Move - In Ready

3930 GALLEY ROAD, COLORADO SPRINGS, COLORADO 80909



## Overview

Positioned just off the signalized intersection of Galley Road and North Academy Blvd, this ±5,277 SF freestanding industrial building offers a rare combination of visibility, functionality, and curb appeal for owner-users. Built for automotive or service-industrial use, the property features two full drive-through bays, eight (8) 10' x 10' grade-level doors, and a fully fenced yard with dual gated access, ideal for secure vehicle flow.

Inside, the front-facing office and customer area has been recently remodeled with modern finishes, creating a clean, professional image uncommon in similar buildings. The shop area includes sealed concrete floors with epoxy coating and recent upgrades, making the property move-in ready for auto service, contractor, or fleet operations. With flexible MX-L zoning, prominent pole signage, and proximity to one of Colorado Springs' busiest trade corridors, this location delivers both access and operational efficiency.

## Highlights

- (8) 10' x 10' Grade Level Doors
- (2) Drive-Thru Bays
- Fenced Yard Space
- Excellent Frontage
- Large Pylon Signage
- Modern, Remodeled Customer Area
- Move-in Ready

## Property Details

### Sales Price

- \$ 1,250,000

### Lot Size

- 0.46 Acres

### Building Size

- 5,277 SF

### Zoning

- MX-L AO

Rev: February 9, 2026

#### Our Network Is Your Edge

All information is from sources deemed reliable and is subject to errors, omissions, change of price, rental, prior sale, and withdrawal without notice. Prospect should carefully verify each item of information contained herein.

#### Kenny Juarbe

C: 719.237.6065

O: 719.630.2277

KJuarbe@HoffLeigh.com

#### Chris Myers

C: 719.650.4627

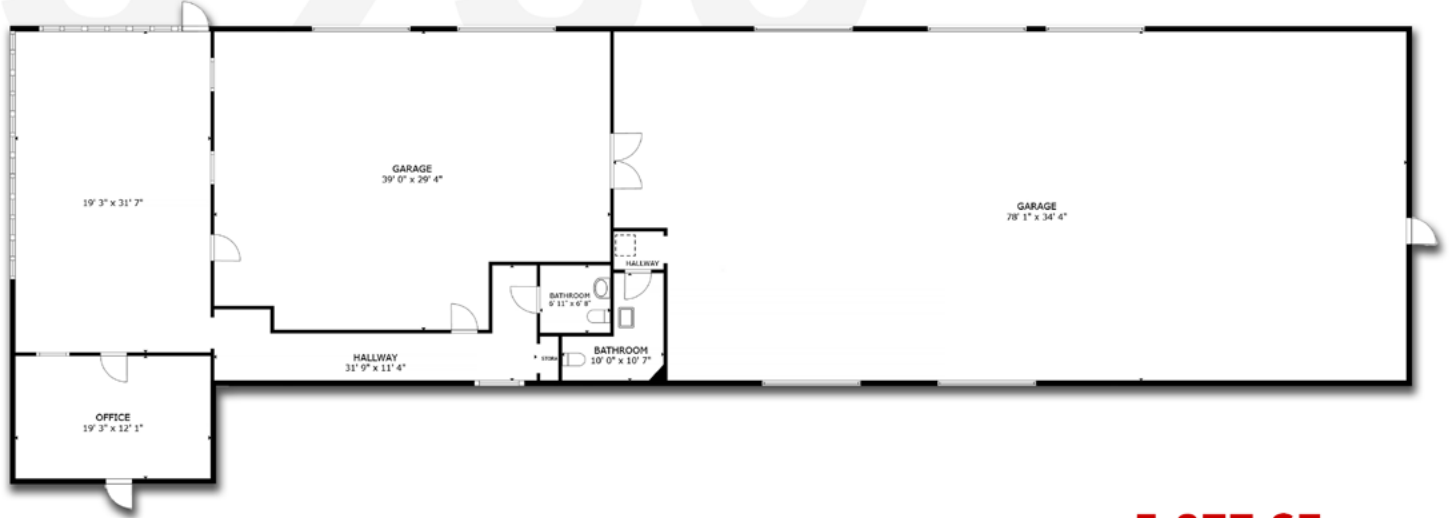
O: 719.630.2277

CMyers@HoffLeigh.com



# Auto/Flex Building with Yard | Move - In Ready

3930 GALLEY ROAD, COLORADO SPRINGS, COLORADO 80909



**5,277 SF**

Galley Road

[CLICK HERE VIRTUAL TOUR](#)

Rev: February 9, 2026



## Our Network Is Your Edge

All information is from sources deemed reliable and is subject to errors, omissions, change of price, rental, prior sale, and withdrawal without notice. Prospect should carefully verify each item of information contained herein.

## Kenny Juarbe

C: 719.237.6065

O: 719.630.2277

KJuarbe@HoffLeigh.com

## Chris Myers

C: 719.650.4627

O: 719.630.2277

CMyers@HoffLeigh.com



# Auto/Flex Building with Yard | Move - In Ready

3930 GALLEY ROAD, COLORADO SPRINGS, COLORADO 80909



Rev: February 9, 2026



## Our Network Is Your Edge

All information is from sources deemed reliable and is subject to errors, omissions, change of price, rental, prior sale, and withdrawal without notice. Prospect should carefully verify each item of information contained herein.

## Kenny Juarbe

C: 719.237.6065

O: 719.630.2277

KJuarbe@HoffLeigh.com

## Chris Myers

C: 719.650.4627

O: 719.630.2277

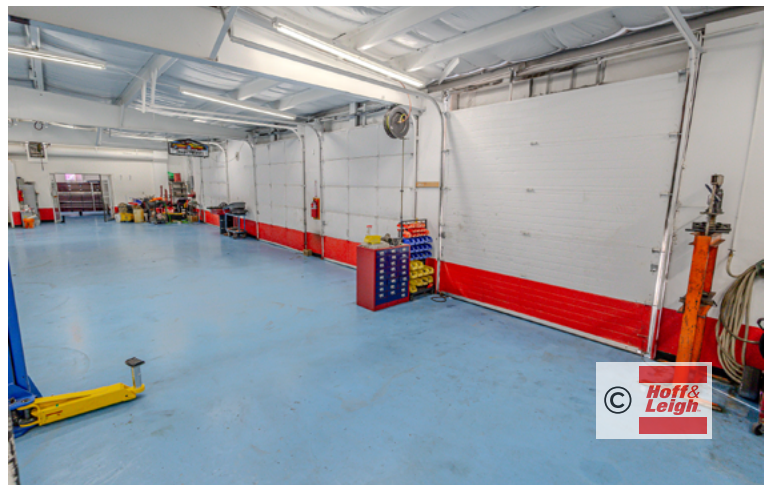
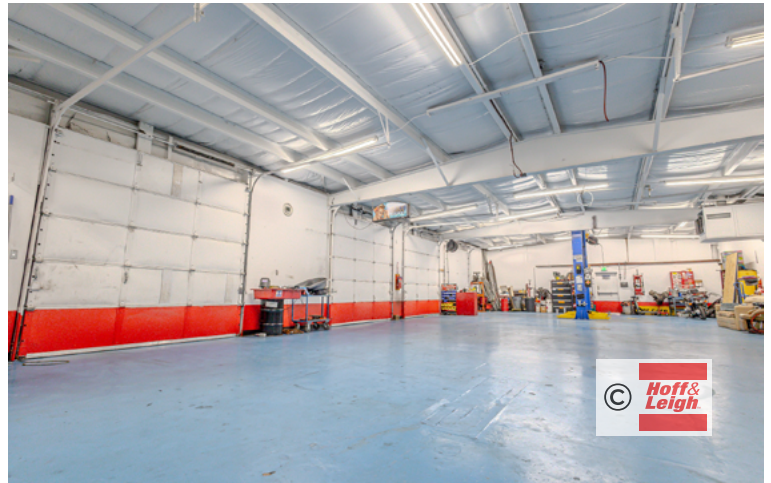
CMyers@HoffLeigh.com





# Auto/Flex Building with Yard | Move - In Ready

3930 GALLEY ROAD, COLORADO SPRINGS, COLORADO 80909



Rev: February 9, 2026



## Our Network Is Your Edge

All information is from sources deemed reliable and is subject to errors, omissions, change of price, rental, prior sale, and withdrawal without notice. Prospect should carefully verify each item of information contained herein.

## Kenny Juarbe

C: 719.237.6065

O: 719.630.2277

KJuarbe@HoffLeigh.com

## Chris Myers

C: 719.650.4627

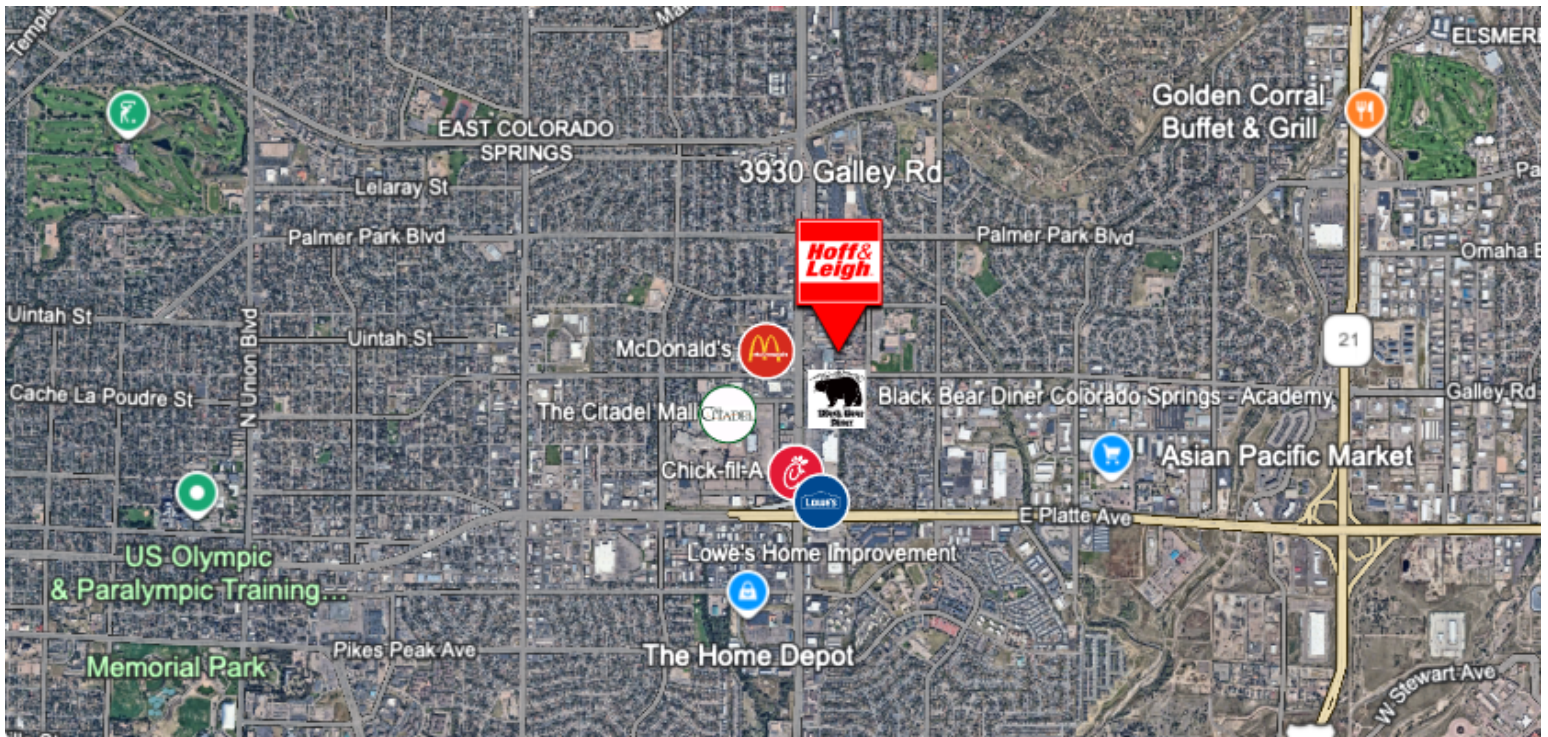
O: 719.630.2277

CMyers@HoffLeigh.com



# Auto/Flex Building with Yard | Move - In Ready

3930 GALLEY ROAD, COLORADO SPRINGS, COLORADO 80909



Rev: February 9, 2026

## Our Network Is Your Edge

All information is from sources deemed reliable and is subject to errors, omissions, change of price, rental, prior sale, and withdrawal without notice. Prospect should carefully verify each item of information contained herein.

## Kenny Juarbe

C: 719.237.6065

O: 719.630.2277

Kjuarbe@HoffLeigh.com

## Chris Myers

C: 719.650.4627

O: 719.630.2277

CMyers@HoffLeigh.com