

PROFESSIONAL OFFICE BUILDING FOR SALE OFFICE SUITES FOR LEASE



5000 LETTERKENNY ROAD
CHAMBERSBURG, PA 17201



TCN
WORLDWIDE
REAL ESTATE SERVICES



PROFESSIONAL OFFICE BUILDING FOR SALE & OFFICE SUITES FOR LEASE

**5000 LETTERKENNY ROAD
CHAMBERSBURG, PA 17201**

OFFERING SUMMARY




Building Size	36,000 SF
Sale Price	\$1,935,000
Price per SF	\$53.75 per SF
Property Taxes	\$40,021.19
APN	09-0C03S-009-000000
Available SF for Lease	375 SF - 7,500 SF
Lease Rate	\$25.00 per SF/yr
Lease Type	Gross Full Service
CAM	None
Zoning	Commercial Highway
Municipality	Greene Township
County	Franklin County



PROPERTY OVERVIEW

Introducing 5000 Letterkenny Road, Chambersburg—offered by Landmark Commercial Realty. This 36,000 +/- square foot office building features modern amenities, ample parking, and outdoor storage. Suite sizes range from 375 SF to 6,093 SF. This extensive range empowers businesses of all sizes to find an ideal fit for their operations, facilitating growth and adaptation over time. Moreover, the property offers the unique opportunity for tailored renovations, allowing tenants to customize their office suites to perfectly align with their specific needs and preferences—subject, of course, to mutually agreeable terms.

PROPERTY HIGHLIGHTS

- Rare opportunity to lease quality space in Chambersburg with corporate neighbors
- Secure building with ample on site parking for employees and clients
- Flexible suite sizes and configurations to suit tenants specific needs
- Conveniently located near , , and  allowing easy access throughout the Central PA region

LANDMARK COMMERCIAL REALTY
425 N 21ST STREET, SUITE 302
CAMP HILL, PA 17011
P : 717.731.1990

DARREN SMITH
SENIOR ADVISOR
DSMITH@LandmarkCR.com
C: 717.912.9212

MIKE ROHM, CCIM, MAI
SENIOR ASSOCIATE
MROHM@LandmarkCR.com
C: 717.400.1819



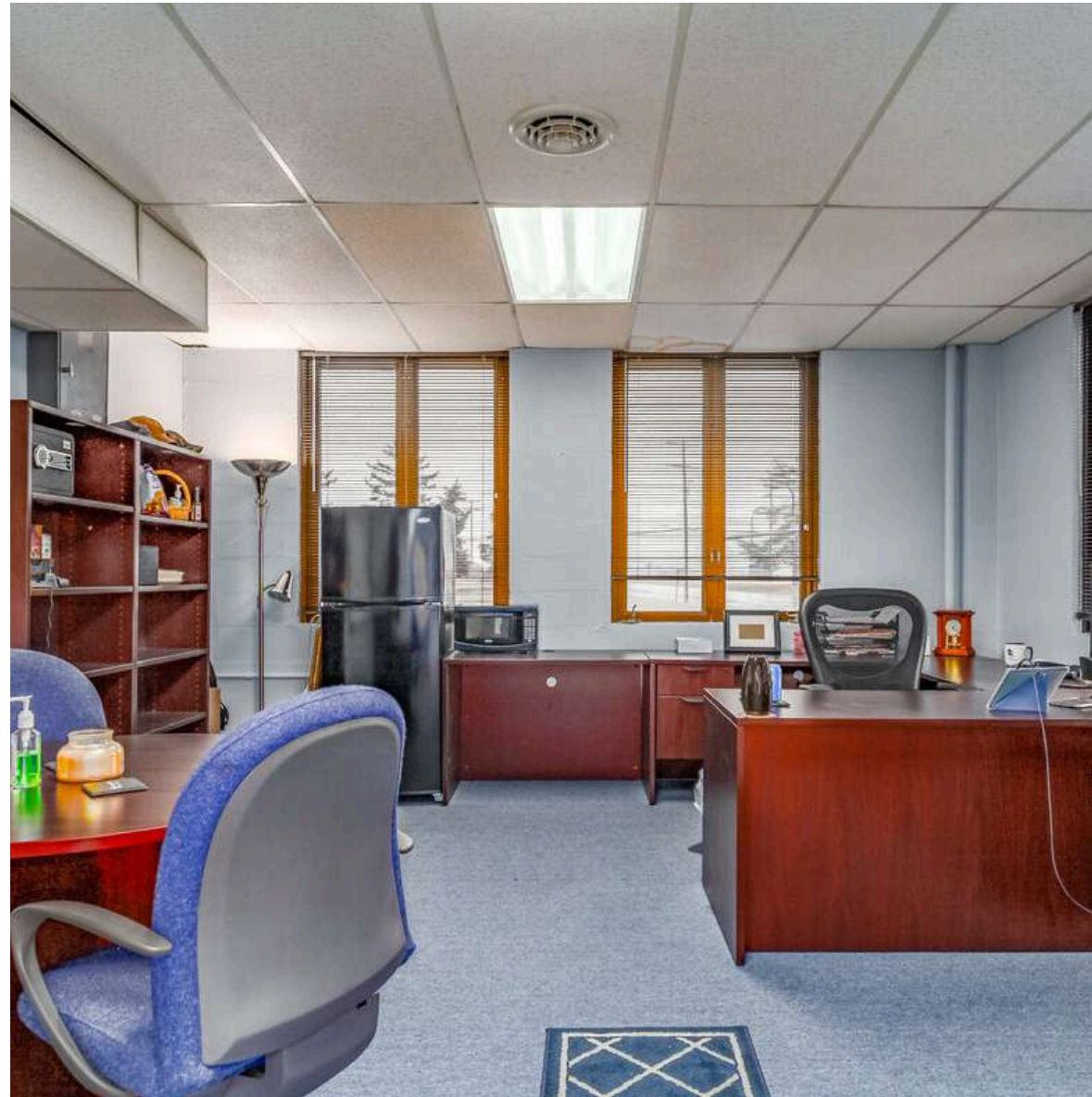
LANDMARKCR.COM

PROFESSIONAL OFFICE BUILDING FOR SALE & OFFICE SUITES FOR LEASE

**5000 LETTERKENNY ROAD
CHAMBERSBURG, PA 17201**

PROPERTY DETAILS

Building Size	36,000 SF
Lot Size	10.82 AC
Property Subtype	Office
Building Class	B
Tenancy	Multi
Number of Floors	21
Average Floor Size	18,000 SF
Elevators	Yes
Year Built	1954
Year Renovated	2017
Restrooms	4
Parking Type	On-site
Parking Count	252 spaces
Ceiling Height	10'
Ceiling Type	Acoustical Tile
Construction	Brick
Roof	Flat
Lighting	Fluroescent
Power	100 Amp/240 Volt
HVAC	Forced Hot Air/Central AC
Sprinklers	Yes
Security	Key fob Access Availavble
Signage	Monument





PROFESSIONAL OFFICE BUILDING FOR SALE & OFFICE SUITES FOR LEASE

**5000 LETTERKENNY ROAD
CHAMBERSBURG, PA 17201**

ADDITIONAL PHOTOS



LANDMARK COMMERCIAL REALTY
425 N 21ST STREET, SUITE 302
CAMP HILL, PA 17011
P : 717.731.1990

DARREN SMITH
SENIOR ADVISOR
DSMITH@LandmarkCR.com
C: 717.912.9212

MIKE ROHM, CCIM, MAI
SENIOR ASSOCIATE
MROHM@LandmarkCR.com
C: 717.400.1819

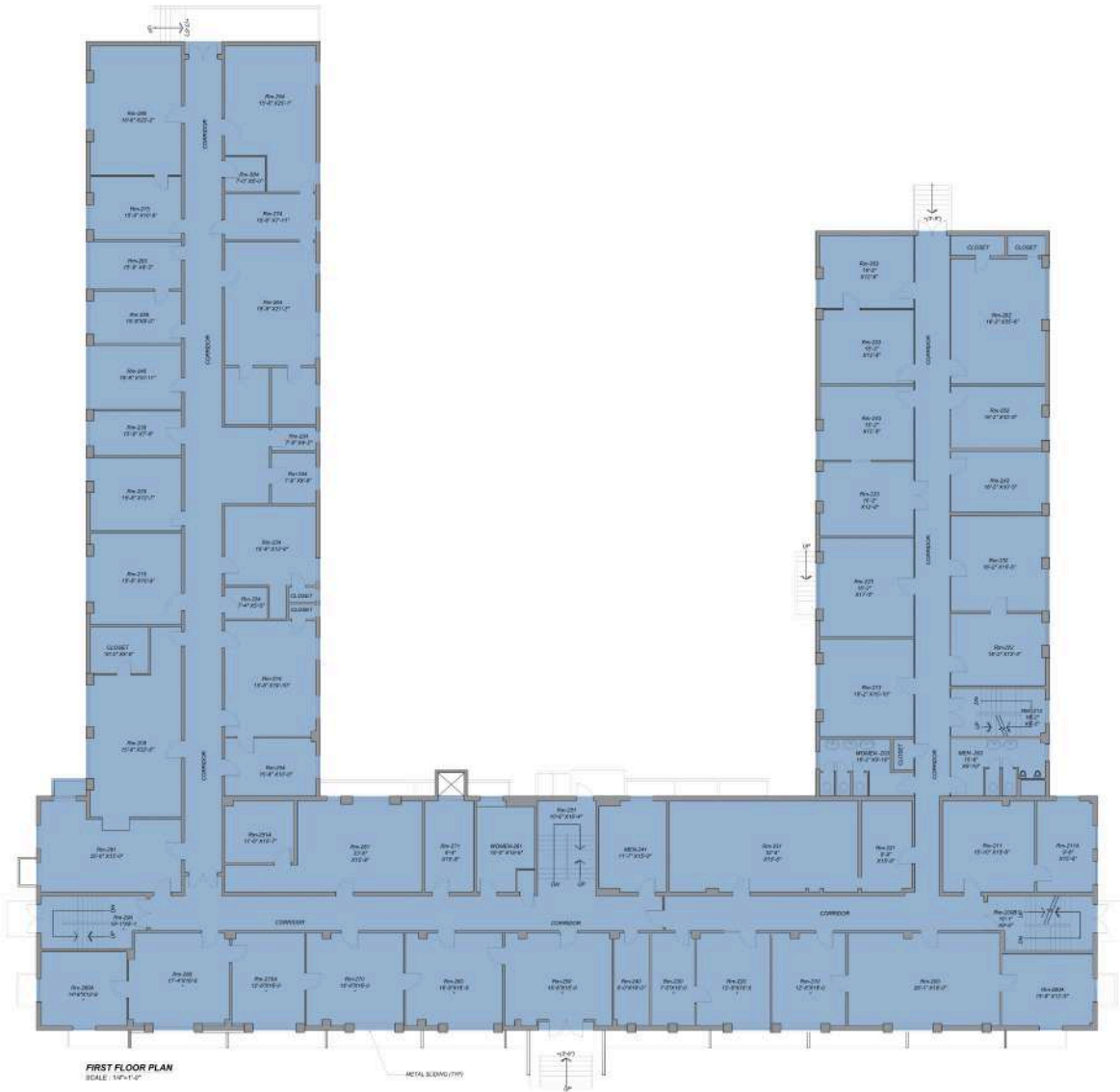


LANDMARKCR.COM

PROFESSIONAL OFFICE BUILDING FOR SALE & OFFICE SUITES FOR LEASE

**5000 LETTERKENNY ROAD
CHAMBERSBURG, PA 17201**

FIRST FLOOR AVAILABILITY





PROFESSIONAL OFFICE BUILDING FOR SALE & OFFICE SUITES FOR LEASE

**5000 LETTERKENNY ROAD
CHAMBERSBURG, PA 17201**

PROPERTY AERIAL



LANDMARK COMMERCIAL REALTY
425 N 21ST STREET, SUITE 302
CAMP HILL, PA 17011
P : 717.731.1990

DARREN SMITH
SENIOR ADVISOR
DSMITH@LandmarkCR.com
C: 717.912.9212

MIKE ROHM, CCIM, MAI
SENIOR ASSOCIATE
MROHM@LandmarkCR.com
C: 717.400.1819



LANDMARKCR.COM

PROFESSIONAL OFFICE BUILDING FOR SALE & OFFICE SUITES FOR LEASE

**5000 LETTERKENNY ROAD
CHAMBERSBURG, PA 17201**

LOCATION AERIAL



LANDMARK COMMERCIAL REALTY
425 N 21ST STREET, SUITE 302
CAMP HILL, PA 17011
P : 717.731.1990

DARREN SMITH
SENIOR ADVISOR
DSMITH@LandmarkCR.com
C: 717.912.9212

MIKE ROHM, CCIM, MAI
SENIOR ASSOCIATE
MROHM@LandmarkCR.com
C: 717.400.1819

TCN
WORLDWIDE
REAL ESTATE SERVICES

LANDMARKCR.COM



PROFESSIONAL OFFICE BUILDING FOR SALE & OFFICE SUITES FOR LEASE

5000 LETTERKENNY ROAD
CHAMBERSBURG, PA 17201

REGIONAL AERIAL



LANDMARK COMMERCIAL REALTY
425 N 21ST STREET, SUITE 302
CAMP HILL, PA 17011
P: 717.731.1990

DARREN SMITH
SENIOR ADVISOR
DSMITH@LandmarkCR.com
C: 717.912.9212

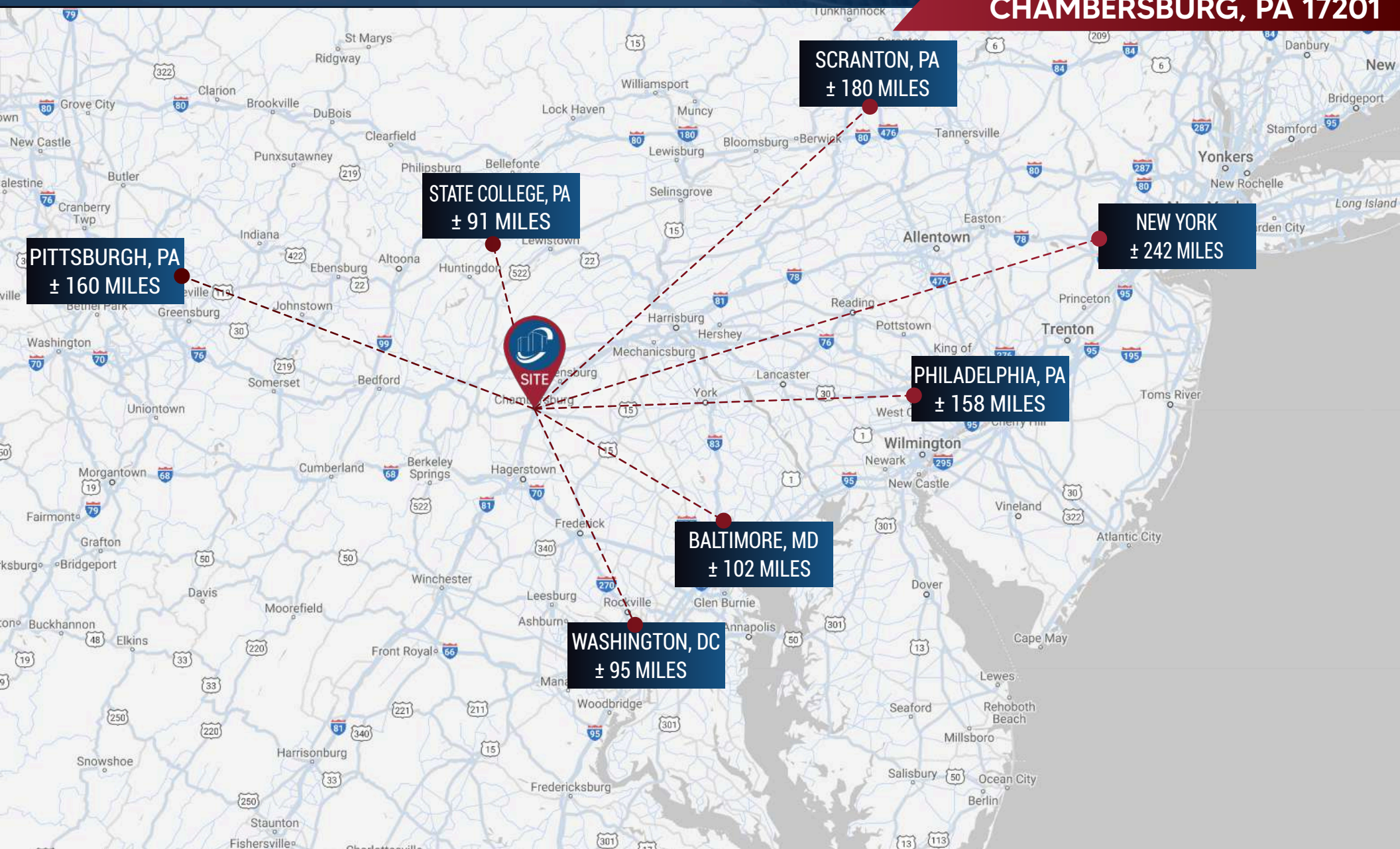
MIKE ROHM, CCIM, MAI
SENIOR ASSOCIATE
MROHM@LandmarkCR.com
C: 717.400.1819

TCN
WORLDWIDE
REAL ESTATE SERVICES

LANDMARKCR.COM

PROFESSIONAL OFFICE BUILDING FOR SALE & OFFICE SUITES FOR LEASE

**5000 LETTERKENNY ROAD
CHAMBERSBURG, PA 17201**



LANDMARK COMMERCIAL REALTY
425 N 21ST STREET, SUITE 302
CAMP HILL, PA 17011
P : 717.731.1990

DARREN SMITH
SENIOR ADVISOR
DSMITH@LandmarkCR.com
C: 717.912.9212

MIKE ROHM, CCIM, MAI
SENIOR ASSOCIATE
MROHM@LandmarkCR.com
C: 717.400.1819

TCN
WORLDWIDE
REAL ESTATE SERVICES

LANDMARKCR.COM

PROFESSIONAL OFFICE BUILDING FOR SALE & OFFICE SUITES FOR LEASE

**5000 LETTERKENNY ROAD
CHAMBERSBURG, PA 17201**

DEMOGRAPHICS

POPULATION

1 MILE	2,270
2 MILE	28,250
3 MILE	46,514

HOUSEHOLDS

1 MILE	909
2 MILE	11,525
3 MILE	19,184

AVERAGE HOUSEHOLD INCOME

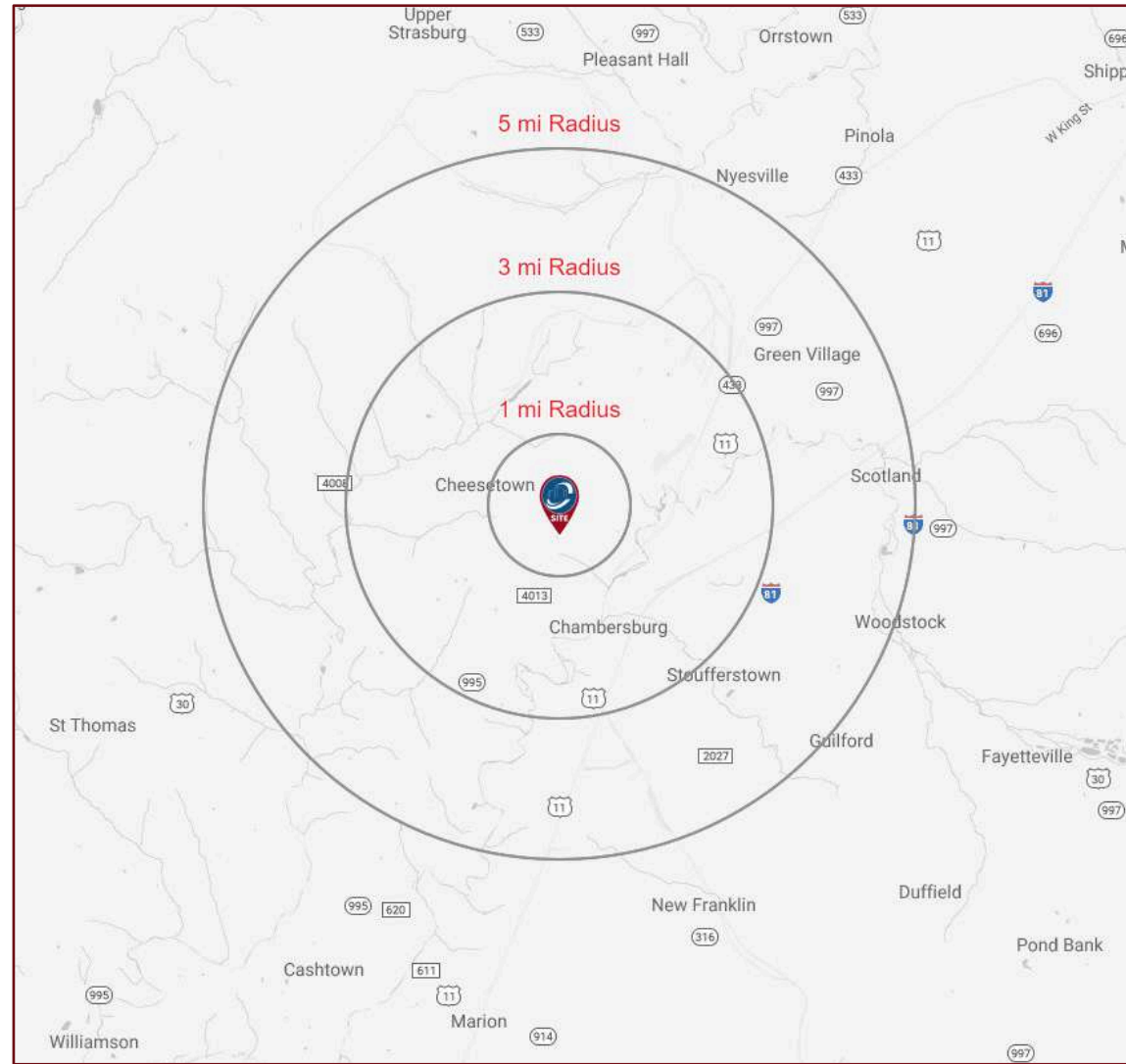
1 MILE	\$102,395
2 MILE	\$93,199
3 MILE	\$99,287

TOTAL BUSINESSES

1 MILE	79
2 MILE	348
3 MILE	1,529

TOTAL EMPLOYEES (DAYTIME POPULATION)

1 MILE	1,134
2 MILE	4,482
3 MILE	15,307





PROFESSIONAL OFFICE BUILDING FOR SALE & OFFICE SUITES FOR LEASE

**5000 LETTERKENNY ROAD
CHAMBERSBURG, PA 17201**

CHAMBERSBURG, PA

AREA OVERVIEW: Nestled in the heart of Franklin County, Chambersburg serves as a strategic gateway to new markets, resources, and partnerships. As the largest municipal electric utility in Pennsylvania, we provide businesses with reliable, affordable energy solutions supported by cutting-edge infrastructure and a commitment to sustainability. Additionally, our unique position as one of the few municipalities in the state to operate a public gas utility offers businesses access to a reliable and cost-effective energy source.

In addition to our robust utilities, Chambersburg's thriving business community benefits from a strategic location with easy access to major transportation routes, a skilled workforce, and a supportive ecosystem of local government, economic development agencies, and business organizations. From startup ventures to established enterprises, Chambersburg welcomes businesses of all sizes and sectors. With a diverse array of commercial properties, incentives for growth, and a pro-business climate, the town is primed to accommodate your vision and fuel your success.



LETTERKENNY ARMY DEPOT

Originally established as an ammunition depot, LEAD in Chambersburg, Pennsylvania, is now a leading force in repairing and modernizing air and missile defense systems crucial for multi-domain operations. With over 18,000 acres, LEAD stands as the second largest employer in Franklin County, with over 1,600 employees fueling over a quarter of a billion dollars annually into the region. The workforce's dedication is evident through various awards, showcasing their loyalty and hard work, while Team Letterkenny drives improvement initiatives across the depot. Certified in quality management systems and health and safety standards, LEAD operates under the U.S. Army Aviation and Missile Life Cycle Management Command, embodying over 80 years of unwavering commitment to delivering excellence to the nation's warfighters.

LANDMARK COMMERCIAL REALTY
425 N 21ST STREET, SUITE 302
CAMP HILL, PA 17011
P : 717.731.1990

DARREN SMITH
SENIOR ADVISOR
DSMITH@LandmarkCR.com
C: 717.912.9212

MIKE ROHM, CCIM, MAI
SENIOR ASSOCIATE
MROHM@LandmarkCR.com
C: 717.400.1819



LANDMARKCR.COM

10



5000 LETTERKENNY ROAD CHAMBERSBURG, PA 17201

PROFESSIONAL OFFICE SUITES
FOR LEASE

CONFIDENTIALITY & DISCLAIMER

All materials and information received or derived from Landmark Commercial its directors, officers, agents, advisors, affiliates and/or any third party sources are provided without representation or warranty as to completeness, veracity, or accuracy, condition of the property, compliance or lack of compliance with applicable governmental requirements, developability or suitability, financial performance of the property, projected financial performance of the property for any party's intended use or any and all other matters.

Neither Landmark Commercial its directors, officers, agents, advisors, or affiliates makes any representation or warranty, express or implied, as to accuracy or completeness of the any materials or information provided, derived, or received. materials and information from any source, whether written or verbal, that may be furnished for review are not a substitute for a party's active conduct of its own due diligence to determine these and other matters of significance to such party. Landmark Commercial will not investigate or verify any such matters or conduct due diligence for a party unless otherwise agreed in writing.

EACH PARTY SHALL CONDUCT ITS OWN INDEPENDENT INVESTIGATION AND DUE DILIGENCE.

Any party contemplating or under contract or in escrow for a transaction is urged to verify all information and to conduct their own inspections and investigations including through appropriate third party independent professionals selected by such party. All financial data should be verified by the party including by obtaining and reading applicable documents and reports and consulting appropriate independent professionals. Landmark Commercial makes no warranties and/or representations regarding the veracity, completeness, or relevance of any financial data or assumptions. Landmark Commercial does not serve as a financial advisor to any party regarding any proposed transaction. All data and assumptions regarding financial performance, including that used for financial modeling purposes, may differ from actual data or performance. Any estimates of market rents and/or projected rents that may be provided to a party do not necessarily mean that rents can be established at or increased to that level. Parties must have evaluate any applicable contractual and governmental limitations as well as market conditions, vacancy factors and other issues in order to determine rents from or for the property.

Legal questions should be discussed by the party with an attorney. Tax questions should be discussed by the party with a certified public accountant or tax attorney. Title questions should be discussed by the party with a title officer or attorney. Questions regarding the condition of the property and whether the property complies with applicable governmental requirements should be discussed by the party with appropriate engineers, architects, contractors, other consultants and governmental agencies. All properties and services are marketed by Landmark Commercial in compliance with all applicable fair housing and equal opportunity laws.