

814

MANHATTAN AVENUE
CORNER OF CALYER STREET | GREENPOINT

DIME

Since 1864

814

Manhattan

Cal



814

MANHATTAN AVENUE
CORNER OF CALYER STREET | GREENPOINT

SIZE: 2,000 SF Ground Floor
700 SF Basement

FRONTAGE: 100' wraparound

CEILING HEIGHT: 12'

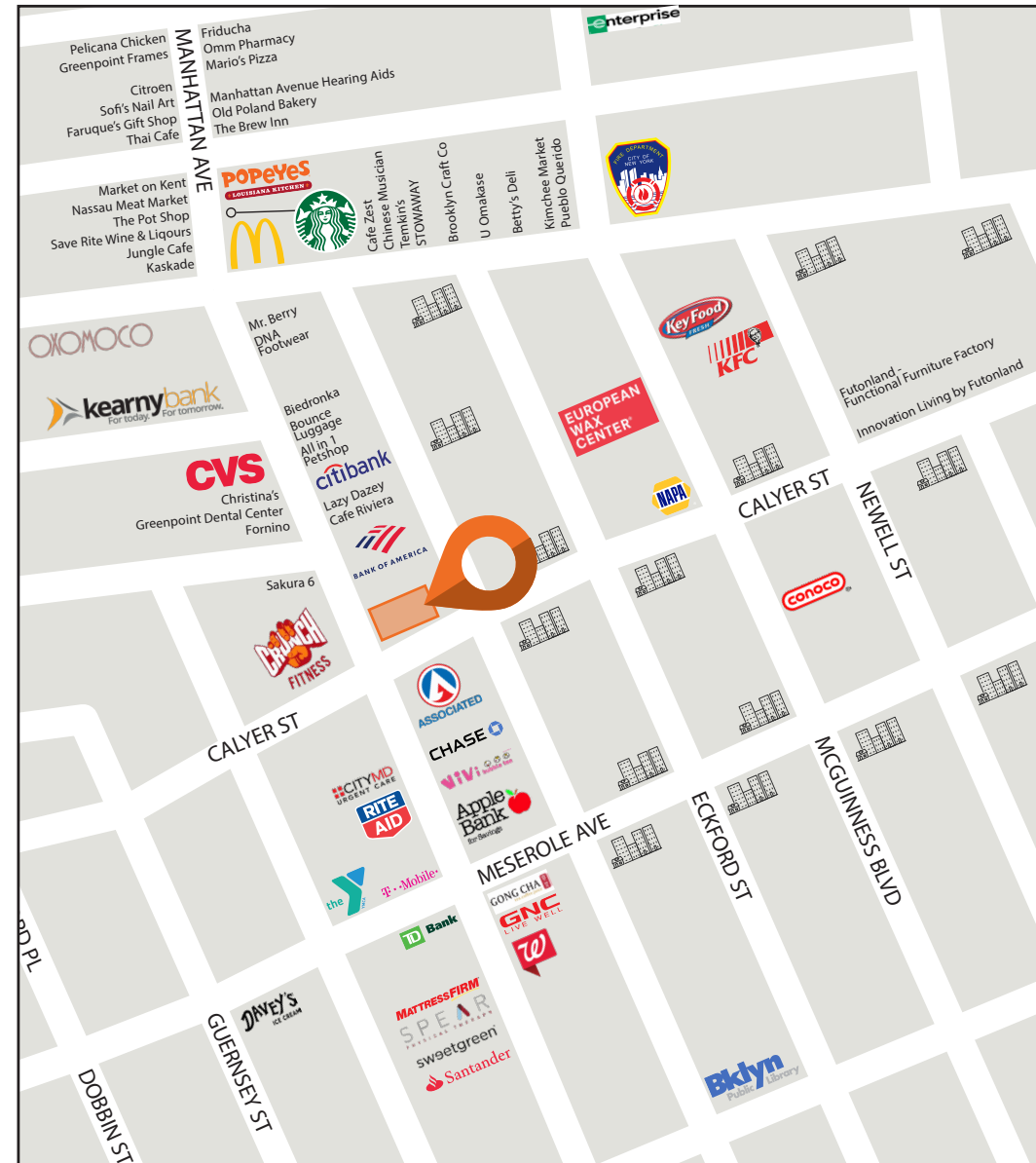
ASKING RENT: Upon Request

POSSESSION: Q2 2025

TRANSPORTATION: 

HIGHLIGHTS:

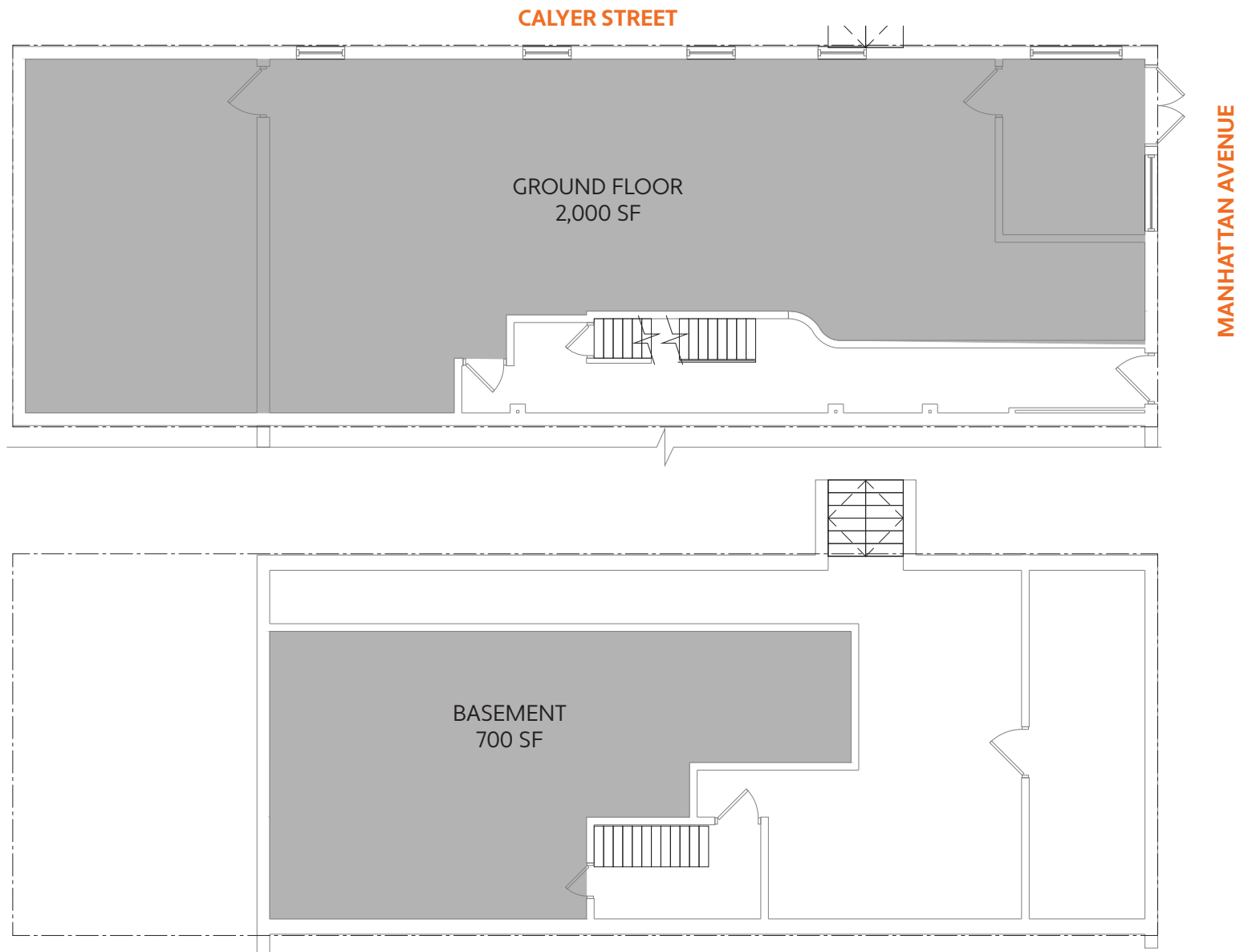
- Close proximity to subway lines with over 6M annual riders
- High foot traffic area in dense residential neighborhood
- Neighbors include: *City MD, Apple Bank, Chase, Rite Aid, Associated Supermarket, YMCA, Mattress Firm, Gong Cha, TD Bank, Walgreens, Santander, Davey's Ice Cream, Crunch Fitness, Awoke Vintage, Vivi Bubble Tea, Vital, Fornino, Oxomoco, Brooklyn Brewery, Bank of America*



814

MANHATTAN AVENUE
CORNER OF CALYER STREET | GREENPOINT

FLOOR PLANS:



814

MANHATTAN AVENUE

CORNER OF CALYER STREET
GREENPOINT

FOR MORE INFORMATION,
PLEASE CONTACT:

AKRAM MOZEB

646.897.4792 | AMozeb@ksrny.com

JORDAN RAPHAN

516.776.4771 | JRaphan@ksrny.com

