

FOR LEASE



## PROPERTY DETAILS

2060 Harrison Blvd., Ogden, UT 84401

- Anchored by: Fresh Market, Dollar Tree and South Fork Hardware
- Large Attractive Pylon Signage
- Easy Access and Great Parking
- In-line Tenants: Domino's, One Stop Smoke Shop, D & T Nails, Hunan Chinese, TitleMax, Cut Hut, The Original Philadelphia

### SURROUNDING TENANTS



## 2025 DEMOS



### EST. POPULATION

1 MILE » 15,660  
3 MILE » 78,001  
5 MILE » 141,951



### EST. HOUSEHOLDS

1 MILE » 6,677  
3 MILE » 30,163  
5 MILE » 53,201



### EST. AVERAGE HH INCOME

1 MILE » \$83,816  
3 MILE » \$87,212  
5 MILE » \$100,442

# NEWMARK



## MOUNTAIN WEST

**KYLE BLOOMFIELD**

kbloomfield@newmarkmw.com

direct 801.456.8814

[View Profile](#)

**FULL SERVICE  
COMMERCIAL REAL ESTATE**  
312 East South Temple  
Salt Lake City, Utah 84111  
Office 801.456.8800  
[www.newmarkmw.com](http://www.newmarkmw.com)



# NEWMARK

**MOUNTAIN WEST**

**KYLE BLOOMFIELD**  
 kbloomfield@newmarkmw.com  
 direct 801.456.8814  
[View Profile](#)

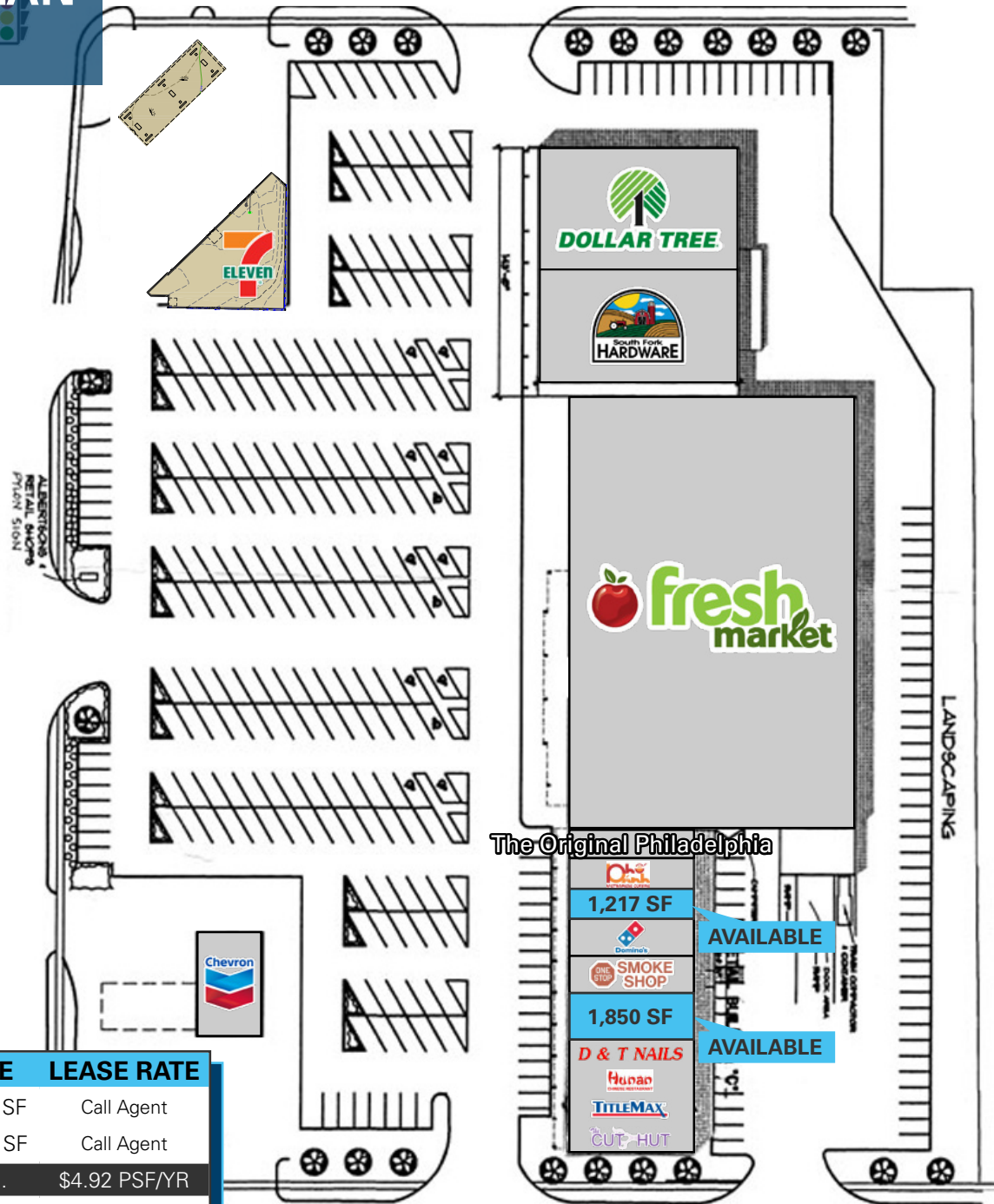
**FULL SERVICE  
 COMMERCIAL REAL ESTATE**  
 312 East South Temple  
 Salt Lake City, Utah 84111  
 Office 801.456.8800  
[www.newmarkmw.com](http://www.newmarkmw.com)

# CANYON PLAZA SHOPPING CENTER

## SITE PLAN

20th Street - 8,051 cars/day

Harrison Boulevard - 28,144 cars/day



AVAILABLE	SIZE	LEASE RATE
2058	1,217 SF	Call Agent
2064	1,850 SF	Call Agent
Tax, Ins. and C.A.M.		\$4.92 PSF/YR
*Subject to Landlord's approval of qualified tenant based on financial statements		

21<sup>st</sup> Street

NEWMARK

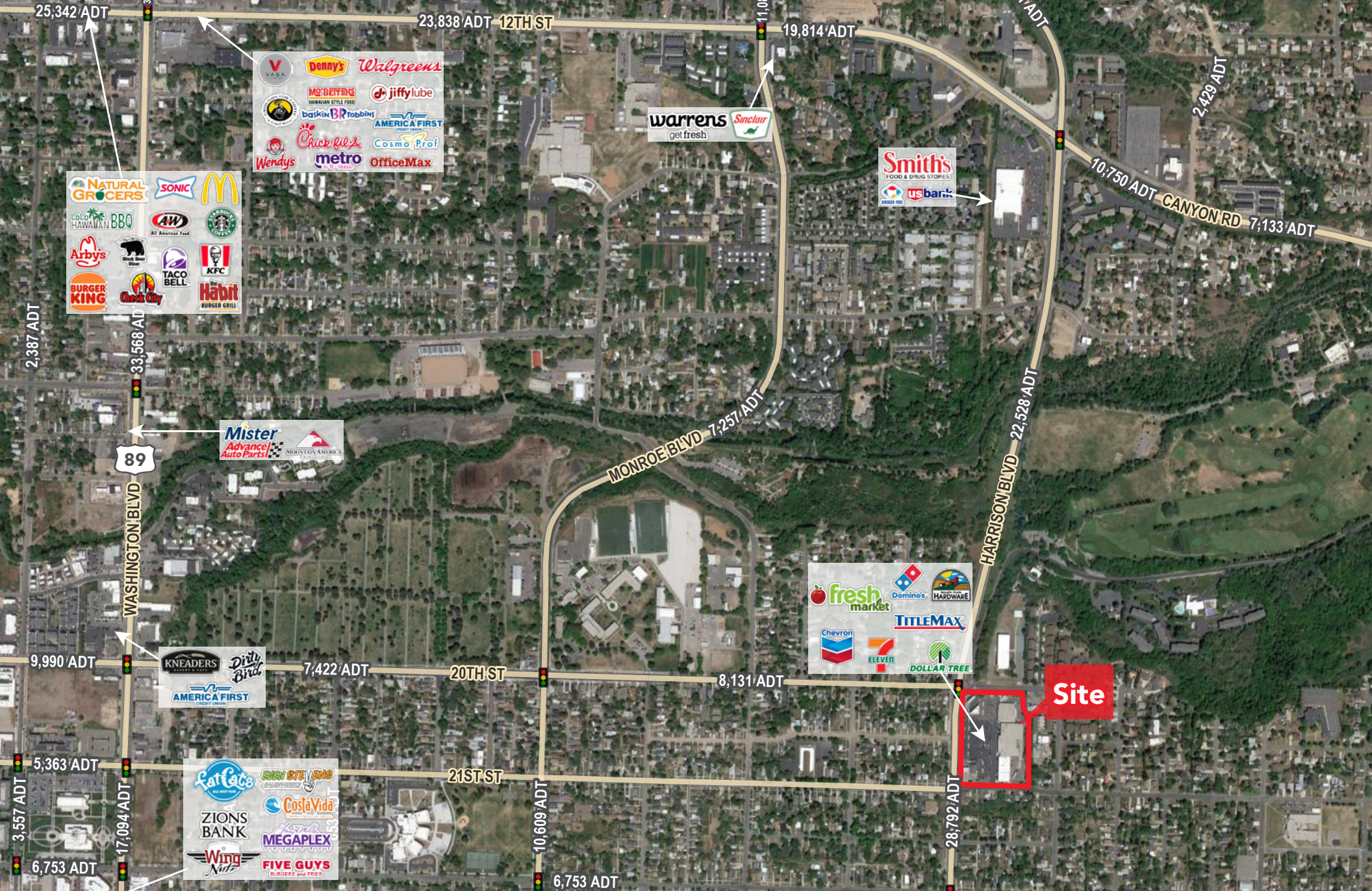
Mountain West

**KYLE BLOOMFIELD**  
 kbloomfield@newmarkmw.com  
 direct 801.456.8814  
[View Profile](#)

**FULL SERVICE  
 COMMERCIAL REAL ESTATE**  
 312 East South Temple  
 Salt Lake City, Utah 84111  
 Office 801.456.8800  
[www.newmarkmw.com](http://www.newmarkmw.com)

This statement with the information it contains is given with the understanding that all negotiations relating to the purchase, renting or leasing of the property described above shall be conducted through this office. The above information while not guaranteed has been secured from sources we believe to be reliable.





**NEWMARK**  
MOUNTAIN WEST

**KYLE BLOOMFIELD**  
kbloomfield@newmarkmw.com  
direct 801.456.8814  
[View Profile](#)

**FULL SERVICE  
COMMERCIAL REAL ESTATE**  
312 East South Temple  
Salt Lake City, Utah 84111  
Office 801.456.8800  
[www.newmarkmw.com](http://www.newmarkmw.com)