

SUITE 110  
±12,423 SF

# 19TH AVENUE CORPORATE CENTER

*A ±56,964 Sf Multi-Tenant Flex/Industrial Project Available  
For Lease with Ample Parking, 19th Avenue Frontage & Close  
Proximity to Loop 101 & I-17 Freeway*

**±12,423 SF**  
TOTAL AVAILABLE

20601 NORTH 19TH AVENUE, SUITE 110, PHOENIX, AZ 85027





19TH AVENUE  
CORPORATE CENTER

# STRATEGIC LOCATION & *EXCEPTIONAL ACCESSIBILITY*

*With convenient proximity to the I-17, Loop 101, and Deer Valley Airport, 19th Avenue Corporate Center is well equipped to meet the needs of R&D, manufacturing, and distribution companies.*

*±12,423 SF*

TOTAL AVAILABLE

*20'*

CLEAR HEIGHT

*±26,586 VPD*

ON HIGHLY TRAFFICKED 19TH AVE

*4.2:1000*

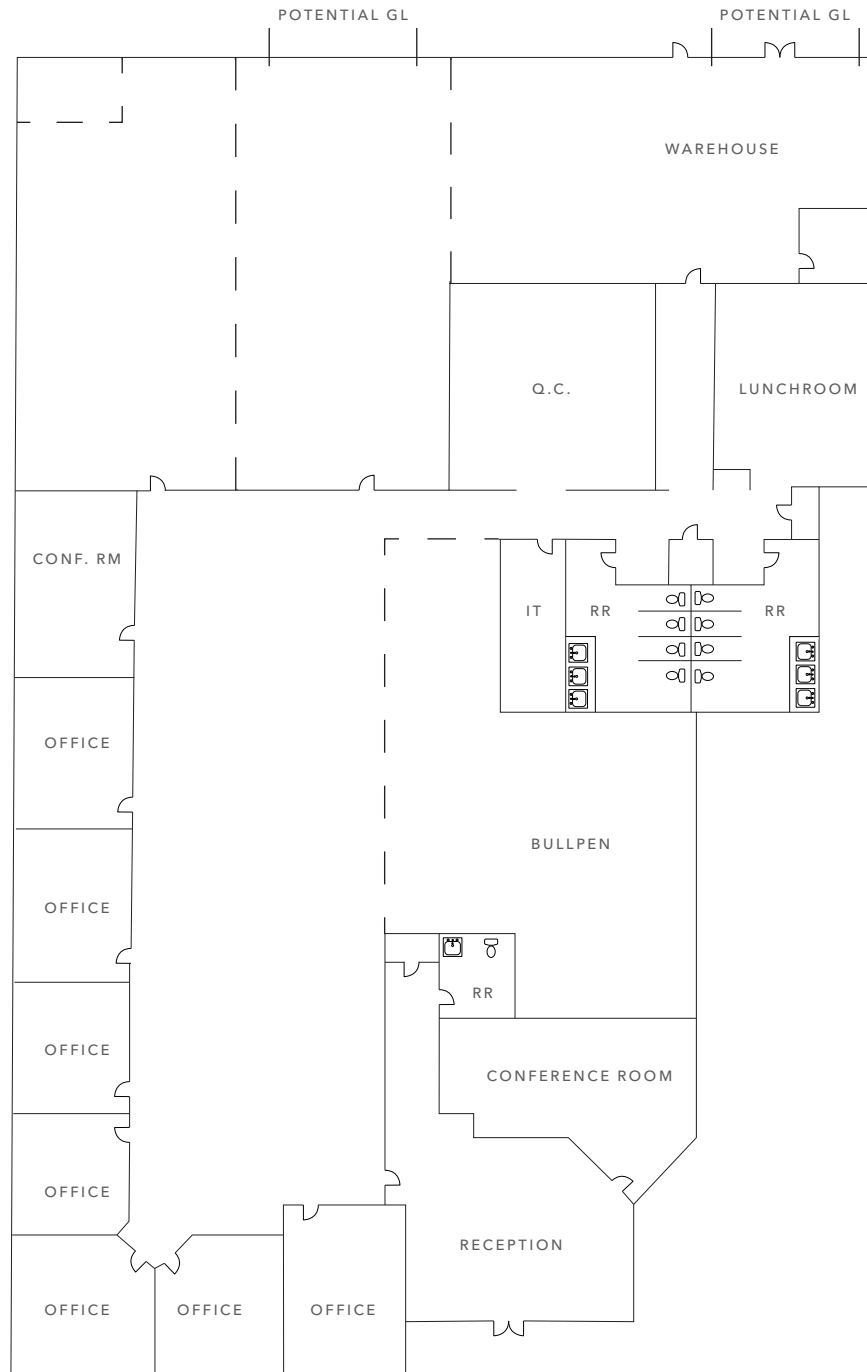
PARKING RATIO



Kidder  
Mathews



# 19TH AVENUE CORPORATE CENTER



*Landlord is open  
to reconfiguration  
and adding more  
warehouse.*

## PROJECT HIGHLIGHTS

Suite 110: ±12,423 square feet

100% HVAC

Loop 101 & I-17 proximity

Covered parking available

4.2/1,000 parking ratio

Frontage on 19th Avenue

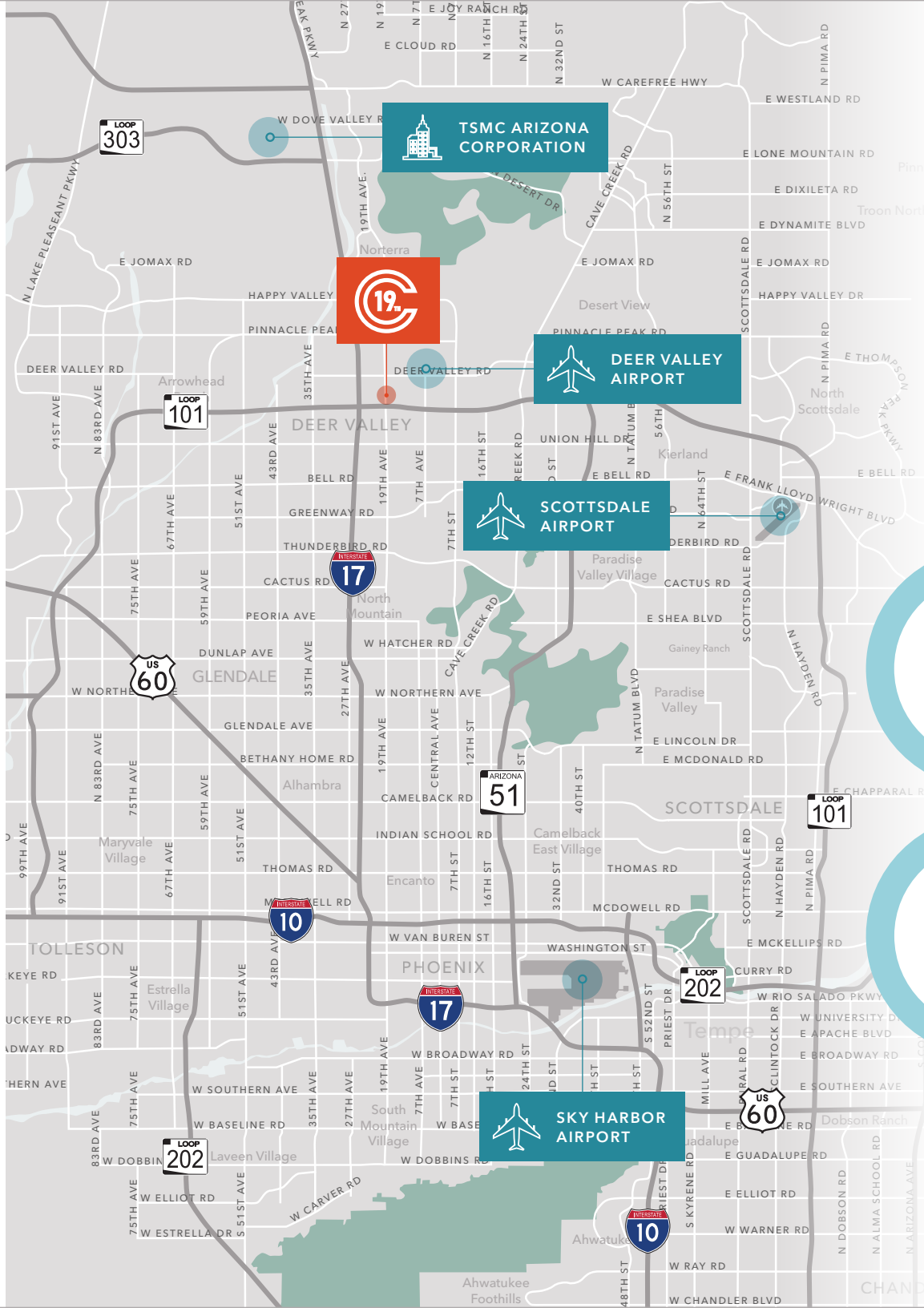
Prominent building signage plus  
monument signage available

24 hour access

— — Dashed lines represent potential configuration.



# 19TH AVENUE CORPORATE CENTER



TSMC ARIZONA  
CORPORATION



DEER VALLEY  
AIRPORT



SCOTTSDALE  
AIRPORT



SKY HARBOR  
AIRPORT

## PERFECTLY CONNECTED

*19th Avenue Corporate  
Center benefits from direct  
access to I-17 and Loop 101*

24 MIN  
SKY HARBOR

4 MIN  
DEER VALLEY  
AIRPORT

19 MIN  
SCOTTSDALE  
AIRPORT

14 MIN  
TSMC  
AZ CORP.



SUITE 110  
±12,423 SF

# 19TH AVENUE CORPORATE CENTER

*For leasing information contact*

**MIKE CIOSEK, SIOR**  
602.513.5135  
mike.ciosek@kidder.com

**ERIC BELL, SIOR**  
602.513.5151  
eric.bell@kidder.com

**DREW EISEN**  
602.513.5174  
drew.eisen@kidder.com

**KIDDER.COM**

This information supplied herein is from sources we deem reliable. It is provided without any representation, warranty, or guarantee, expressed or implied as to its accuracy. Prospective Buyer or Tenant should conduct an independent investigation and verification of all matters deemed to be material, including, but not limited to, statements of income and expenses. Consult your attorney, accountant, or other professional advisor.