



**PINNACLE
REALTY**
OF NEW YORK, LLC

EXCLUSIVE LISTING

FOR SALE



35-55 VERNON BLVD

ASTORIA, NY 11106

Warehouse with Parking on Vernon Blvd. Additional Frontage on 9th Street

Street to Street Access.

TYPE

Warehouse / Office / Land



SQUARE FT.
6,365 BLDG



ZONING
R5



SQUARE FT.
2,885 PKG



PARCEL ID
328
BLOCK



CLEAR HEIGHT
14'



3, 4, 5, 48
LOT



LOADING
2 Drive-in
Doors

PRICE

Upon Request

718-784-8282 / PINNACLERENY.COM

All information is from sources deemed reliable and is submitted subject to errors, omission, changes of price or other conditions, prior sale, rent and withdrawal without notice.

EXTERIOR PICTURES



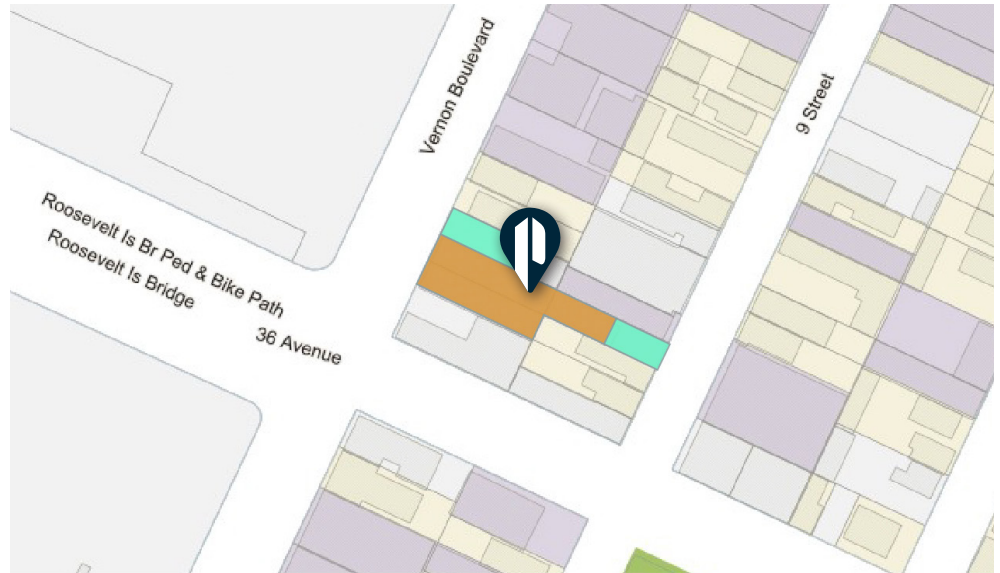
INTERIOR PICTURES



Property Overview

FEATURES


- 6,365 Sq. Ft. Building
- 2,885 Sq. Ft. Land
- Warehouse with Accessible Office
- 2 Drive-In Doors
- Gas Heat
- Street to Street
- 3 Curb Cuts
- Paved & Lit Yards
- All Inspections by Appointment Only



 2,885 SQ. FT. PAVED LAND  6,365 SQ. FT. BUILDING




TRANSPORTATION

 21ST QUEENSBRIDGE

ROOSEVELT ISLAND

  36 AVE

 59TH STREET BRIDGE

35-55 VERNON BLVD

ASTORIA, NY 11106



**PINNACLE
REALTY**
OF NEW YORK, LLC

34-07 Steinway Street, Suite 202
Long Island City, NY 11101
718-784-8282

pinnaclereny.com

FOR MORE INFORMATION ABOUT THIS
PROPERTY CONTACT EXCLUSIVE AGENT:



JAMES EGE

Salesperson

jege@pinnaclereny.com

718-371-6423