

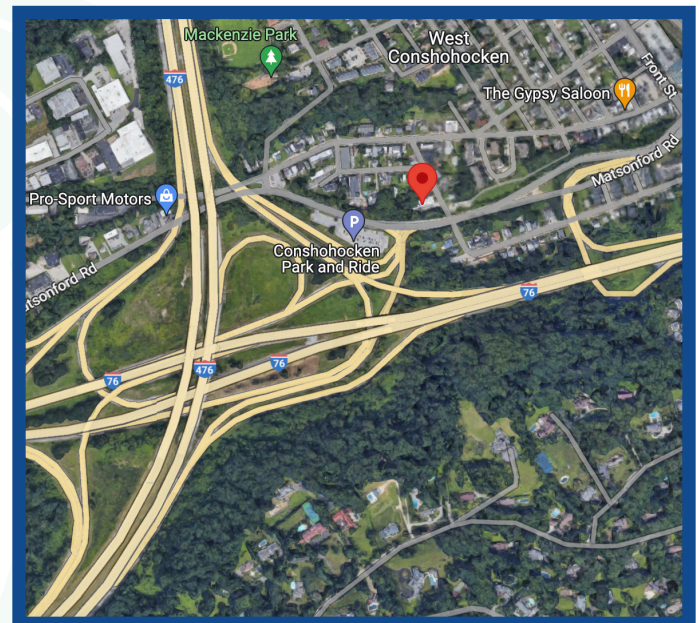
18 ELIZABETH ST
WEST CONSHOHOCKEN, PA 19428

12,735 SF +/-
FOR LEASE



PROPERTY DETAILS

- Convenient to Blue Route, PA Turnpike, and Center City
- Favorable personal and business tax environment
- 900-9,244 SF of finished office space
- Move-in ready office space
- Handicapped accessible
- Public transportation within walking distance
- Numerous amenities nearby including restaurants, banks, and hotels



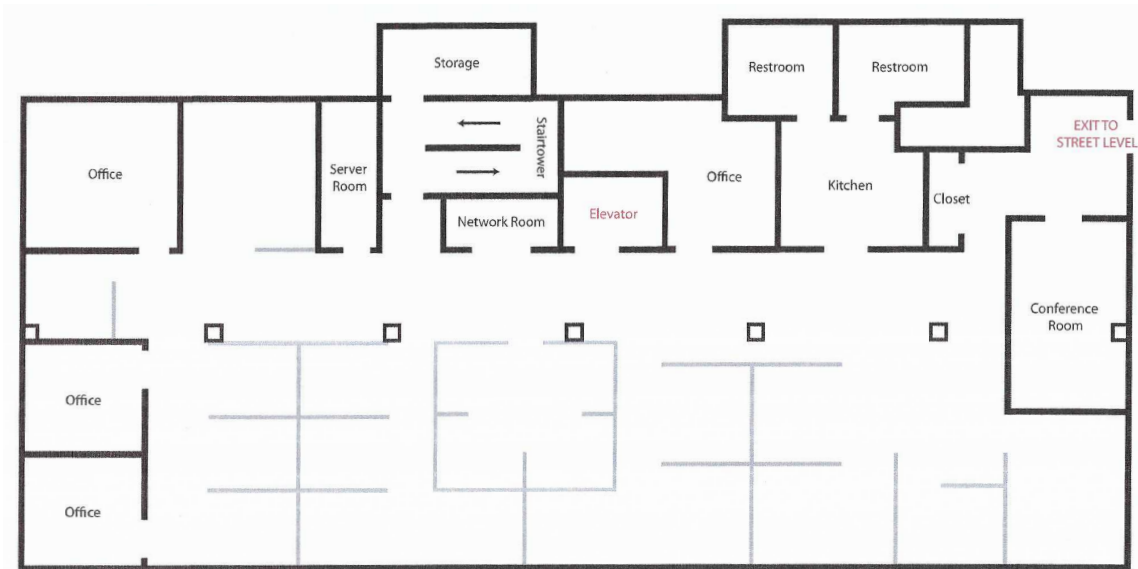
TOM BAILEY
O: 610.359.5810 EXT 317
C: 610.213.7334
Tom@vrpnw.com

This information has been obtained from sources deemed reliable, but has not been verified for accuracy or completeness. You should conduct a careful, independent investigation of the property and verify all information. Any reliance on this information is solely at your own risk.

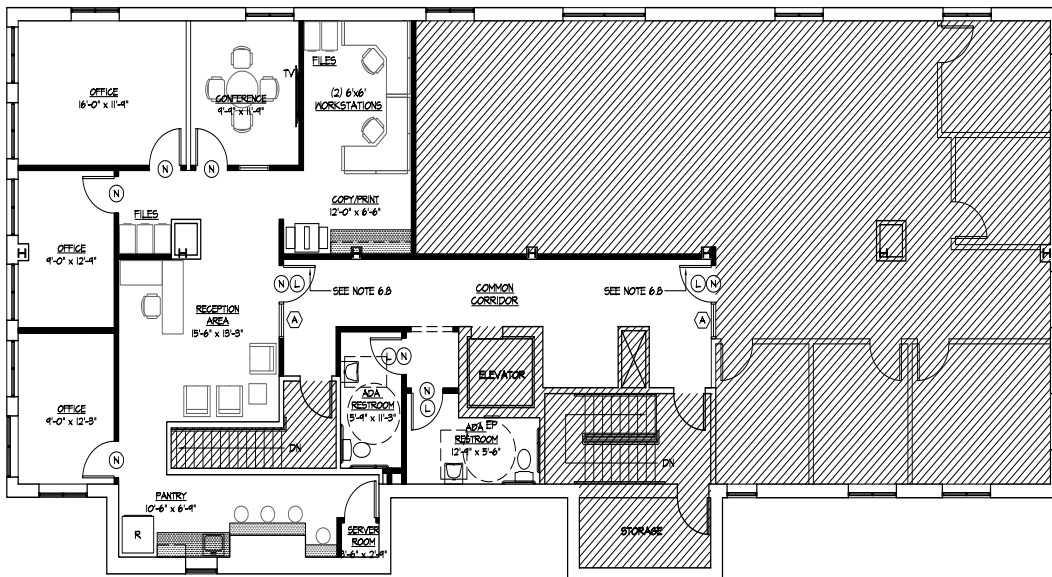
18 ELIZABETH ST
WEST CONSHOHOCKEN, PA 19428

12,735 SF +/-
FOR LEASE

SECOND FLOOR PLAN



THIRD FLOOR TEST FIT



TOM BAILEY
O: 610.359.5810 EXT 317
C: 610.213.7334
Tom@vrpnw.com

This information has been obtained from sources deemed reliable, but has not been verified for accuracy or completeness. You should conduct a careful, independent investigation of the property and verify all information. Any reliance on this information is solely at your own risk.