

BOSTON

215 Newbury Street

Represented by Joe Marini



Gibson

Sotheby's

INTERNATIONAL REALTY

Property Details

On behalf of the ownership at 215 Newbury, Gibson Sotheby's International Realty is pleased to present this highly coveted, boutique retail store.

The existing tenant is creating a new chapter after over twenty years of success. Ownership is ready to assist prospective tenants with a custom buildout. Our rendering shows a beautifully redesigned store to assist in incorporating your brand and personalization.

This store is nestled amongst Boston's most recognizable storefronts and is at the nearest cross street for the Prudential Center. Exclusive, private parking is conveniently available adjacent to the rear egress. This incomparable opportunity is available for July 1st 2024.

5-10 Years

Term

Negotiable

Rent

850

Square Feet

July 1st, 2024

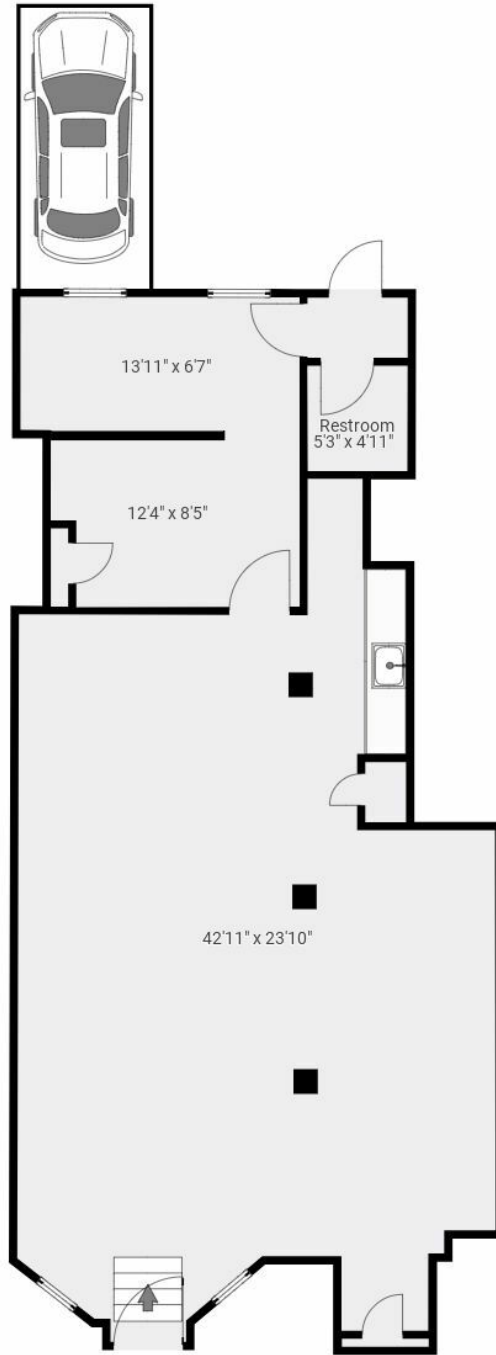
Availability

1

Parking Space



Floor Plan





Joe Marini

Exclusive Listing Agent

Joe.Marini@GibsonSIR.com

617.319.4186

556 Tremont Street

Boston, MA 02118

Gibson

Sotheby's
INTERNATIONAL REALTY

Cooperating Broker Compensation is for MLS members only.

© 2024 Sotheby's International Realty. All Rights Reserved. Sotheby's International Realty® is a registered trademark and used with permission. Each Sotheby's International Realty office is independently owned and operated, except those operated by Sotheby's International Realty, Inc. This material is based upon information which we consider reliable but because it has been supplied by third parties, we cannot represent that it is accurate or complete and it should not be relied upon as such. All offerings are subject to errors, omissions, changes including price or withdrawal without notice. If your property is listed with a real estate broker, please disregard. It is not our intention to solicit the offerings of other real estate brokers. We are happy to work with them and cooperate fully. Equal Housing Opportunity.