

1600



STARBOARD CRE
LOCAL • INDEPENDENT • ENTREPRENEURIAL

Geary Boulevard

San Francisco, CA 94115



Office Space For Lease

Approximately 4,196 sqft, Divisible 2,000 SQFT

Mark Meier

mark@starboardcre.com
415.299.7042

Hans Hansson

hans@starboardcre.com
415.517.2589

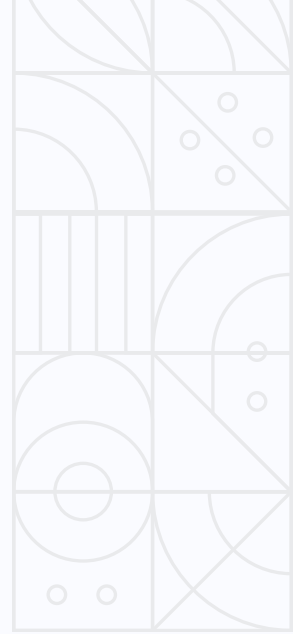
1600 Geary Boulevard

Square Ft: 4,196 Sq Ft

Type: Office

Rate: Negotiable

Zoning: NCD



HIGHLIGHTS

- The current layout was for a medical user, but the space could also be used for a general office or education purposes.
- Space can be divided into approximately 2,000 square feet.
- Adjacent to the public parking garage next door.
- High visibility on Geary Street.
- Easy access to mass transportation.
- Zoning – NCD – Japantown Neighborhood Commercial District.



DESCRIPTION

1600 Geary Boulevard offers an exceptional opportunity to lease a newly built-out medical office space in the heart of Japantown. Spanning 4,196 square feet, this prime location boasts high visibility on Geary Street, ensuring strong foot traffic and easy access for patients and clients. The property is adjacent to a public parking garage, making it convenient for both staff and visitors.

The surrounding area is rich with amenities, including a variety of restaurants, shops, and stores, as well as nearby hospitals and other essential services, all within walking distance. With its central location, excellent public transportation links, and the vibrant atmosphere of Japantown, this space is ideally suited for medical practices looking to establish or expand their presence in San Francisco.



IMAGES



IMAGES






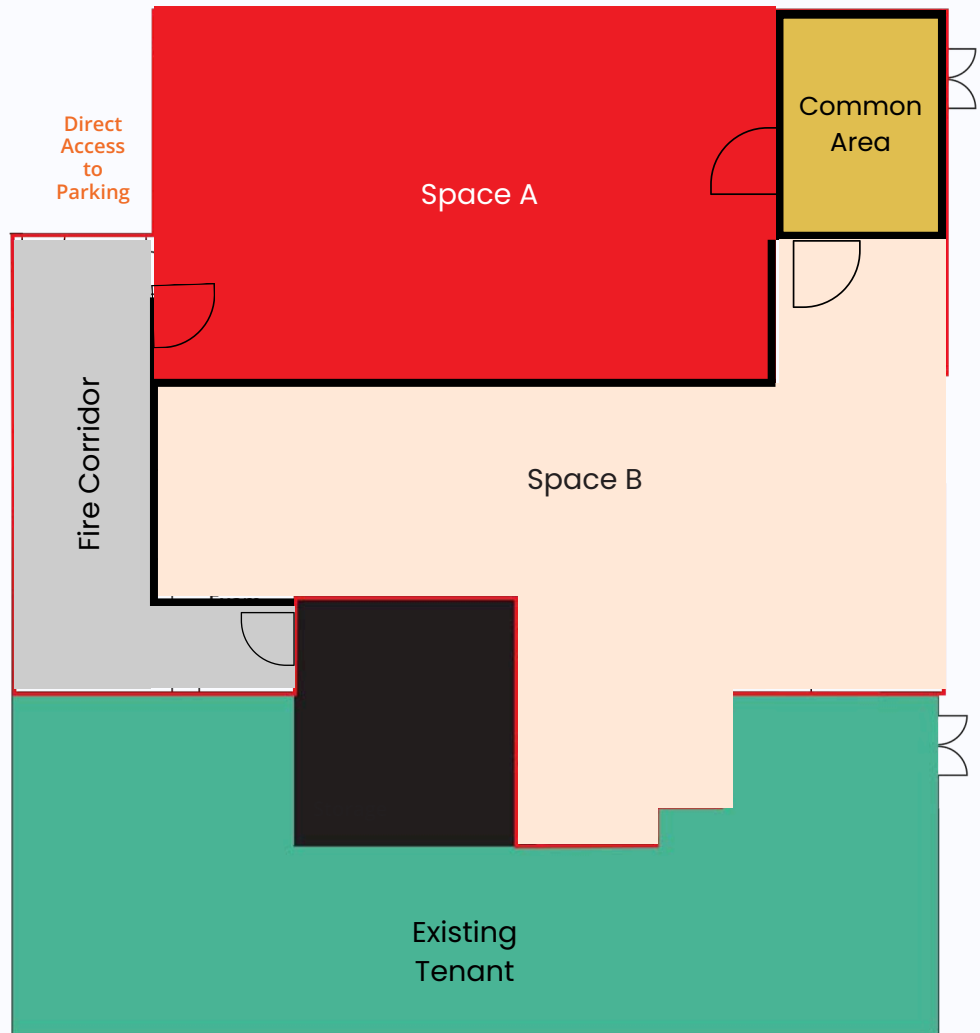
IMAGES



FLOOR PLAN

Key

-  Vacant Medical
-  Dr. Byung Woo, DDS
-  Shared Restrooms



AGENTS



Mark Meier

Senior Leasing & Sales Associate
mark@starboardcre.com
CELL: 415.299.7042
BRE # 02047169

Call

View Profile



Hans Hansson

President / Broker of Record
hans@starboardcre.com
CELL: 415.517.2589
BRE # 00872902

Call

View Profile





STARBOARD CRE
LOCAL • INDEPENDENT • ENTREPRENEURIAL

STARBOARDCRE.COM
49 POWELL STREET, SAN FRANCISCO, CA 94102



Unique Vision

We see what others miss

Local Market Leader

No one knows Northern
California like we do

Full-Service Firm

We do it all

Locally based, and technology-forward, our brokers are highly qualified experts backed by a full-service, in-house support team who understand the intricacies of San Francisco real estate. Starboard CRE brings decades of brokerage experience representing over 600 million square feet of space with an aggregate lease value of over 10 billion and investments sold over 3 billion.



CA DRE# 01103056